

CENTER POINT OF INTERSECTION

EDGE OF PAV'T.

PZT CAMERA ARM SHALL BE ALIGNED AT AN ANGLE OF 45° TOWARD THE CENTER POINT OF THE INTERSECTION

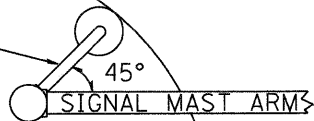
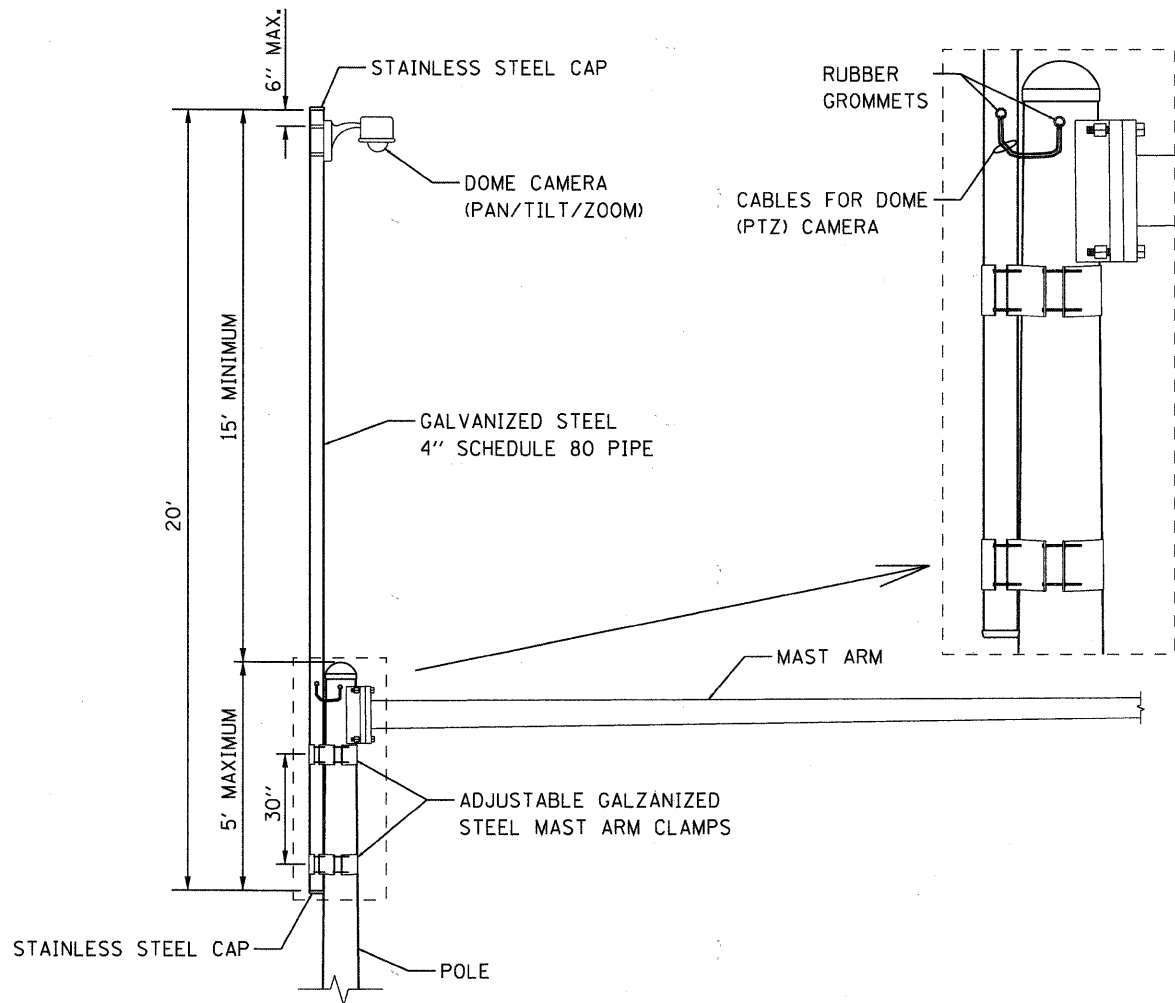


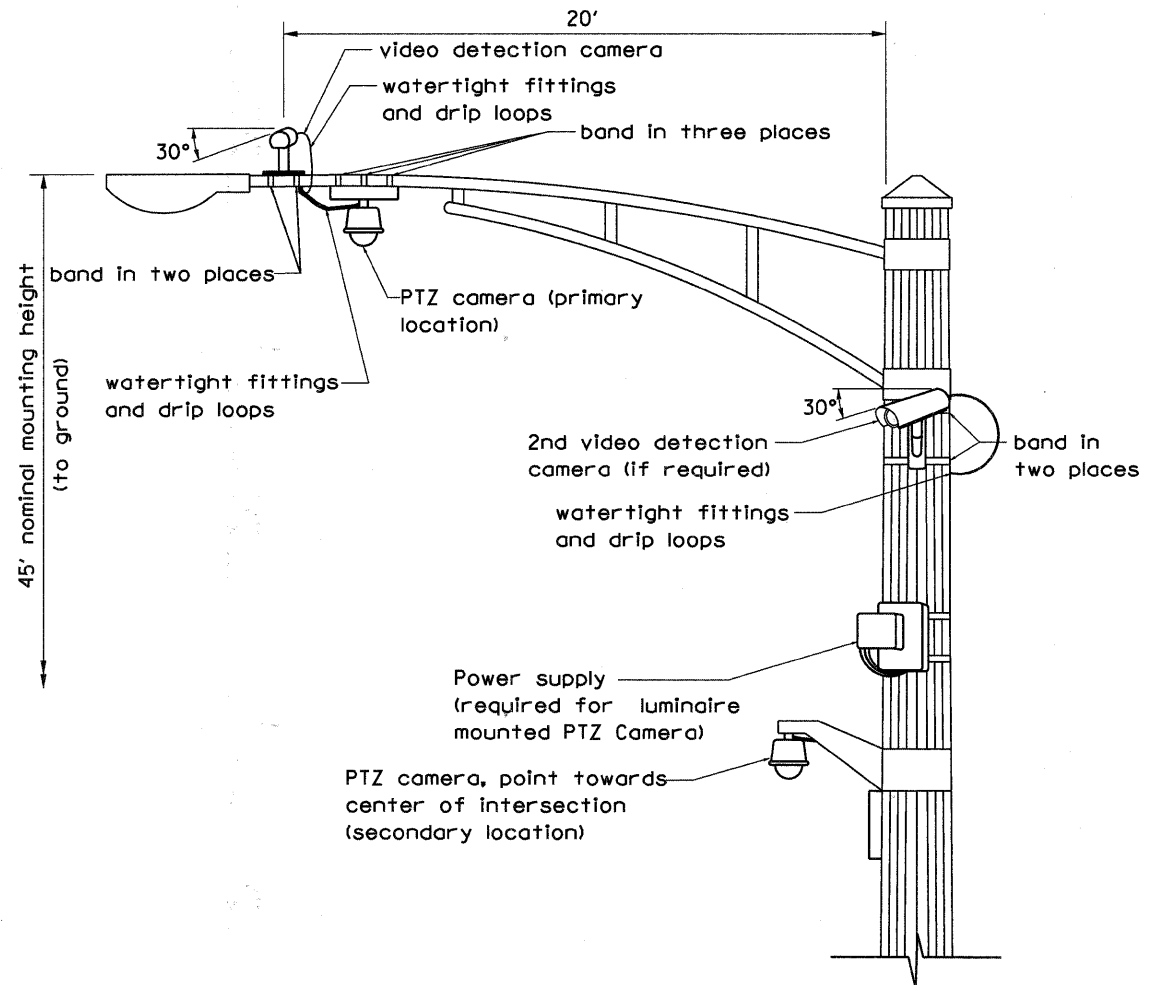
IMAGE SENSOR MOUNTING DETAILS

(NO SCALE)



CAMERA MOUNTING ASSEMBLY DETAIL

(NOT TO SCALE)



VIDEO DETECTION CAMERA(S) AND DOME (PTZ) CAMERA MOUNTING DETAIL

(NOT TO SCALE)

- NOTES FOR SINGLE, DUAL AND MULTIPLE MVP MOUNTING:
- MOUNT LUMINAIRE MOUNTING BRACKET AS HIGH AS POSSIBLE.
 - AIM BRACKET TOWARD DIRECTION OF TRAFFIC TO BE DETECTED.
 - MOUNT MACHINE VISION PROCESSOR AIMING DOWN AT 30 DEGREE ANGLE.

FILE NAME = 8FILEL8



USER NAME = JM	DESIGNED - DG	REVISED -
PLOT SCALE = 1" = 50'	DRAWN - JM/SM	REVISED -
PLOT DATE = 12-21-2010	CHECKED - DG	REVISED -
	DATE - 12-21-2010	REVISED -

STATE OF ILLINOIS
DEPARTMENT OF TRANSPORTATION

CCTV AND VIDEO DETECTION MOUNTING DETAIL

SCALE: N/A SHEET NO. OF SHEETS STA. TO STA.

F.A.P	SECTION	COUNTY	TOTAL SHEETS	SHEET NO.
336	09-00272-01-TL	KANE	68	57
CONTRACT NO. 63540			ILLINOIS FED. AID PROJECT	