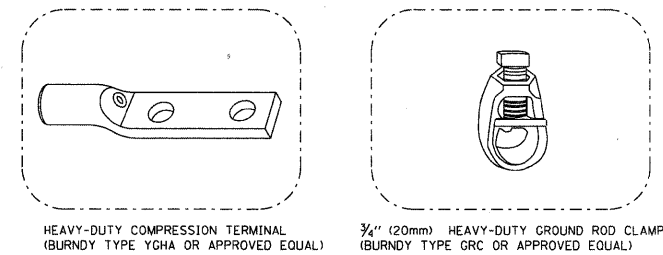
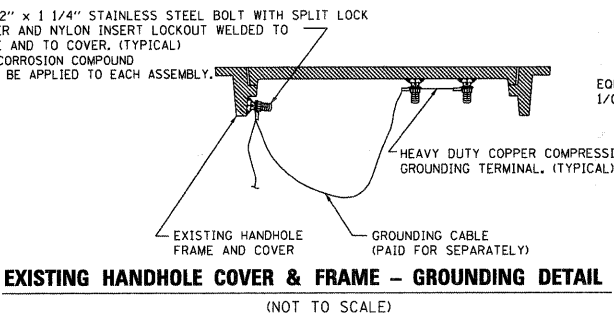
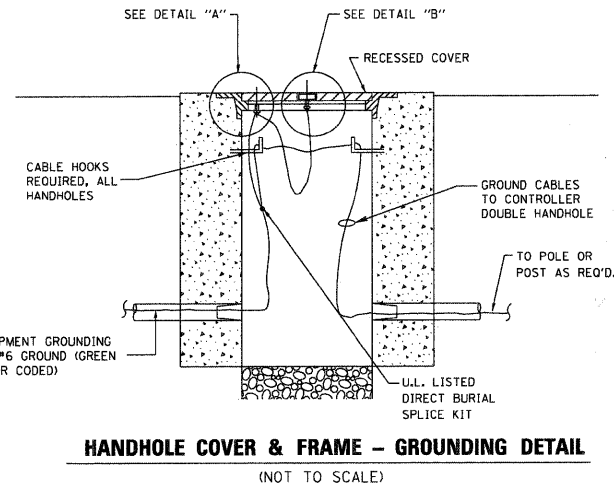
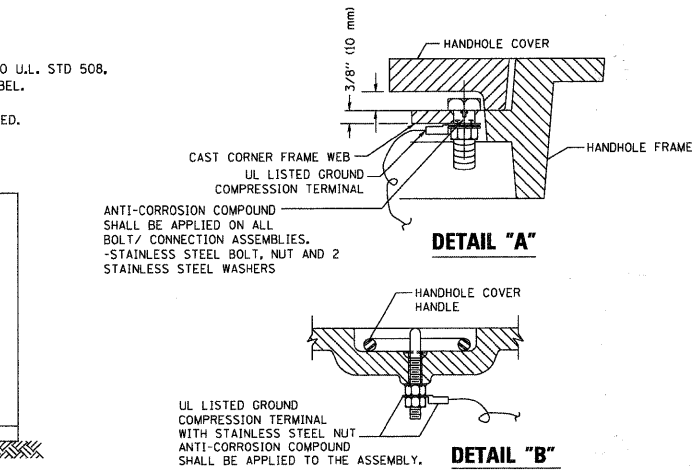
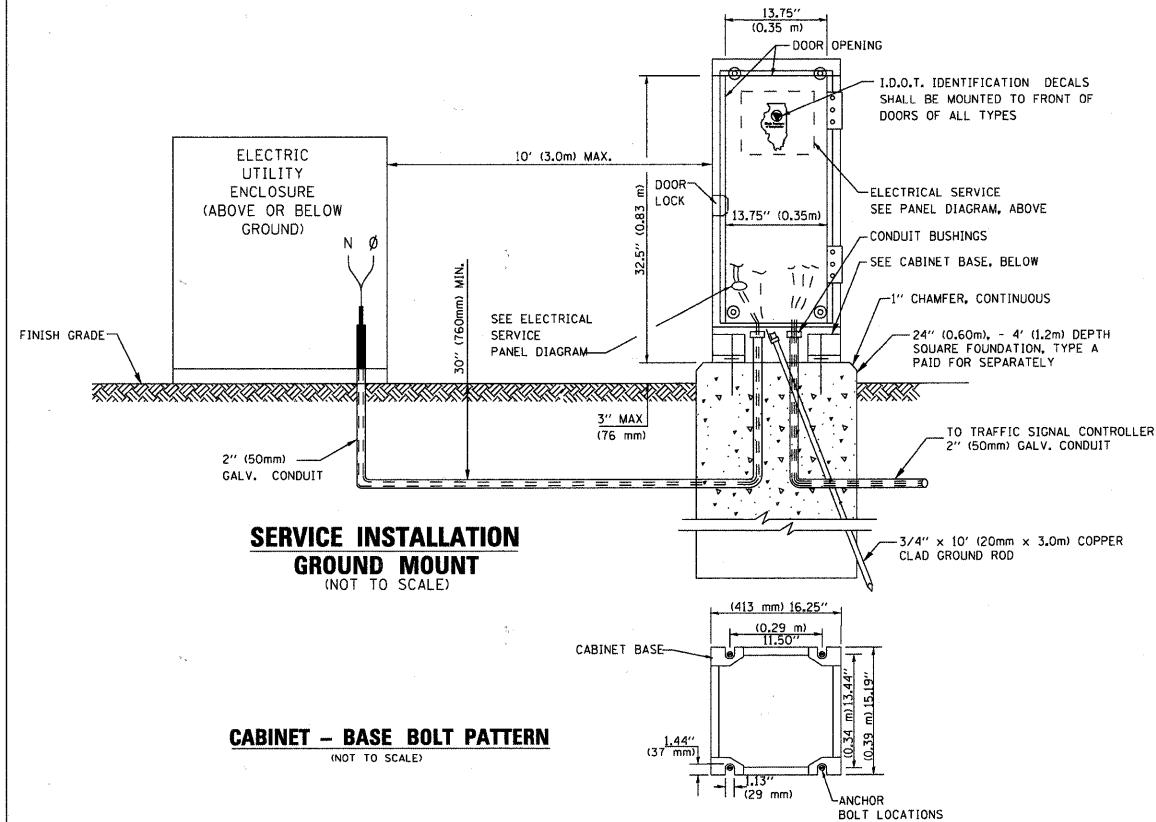
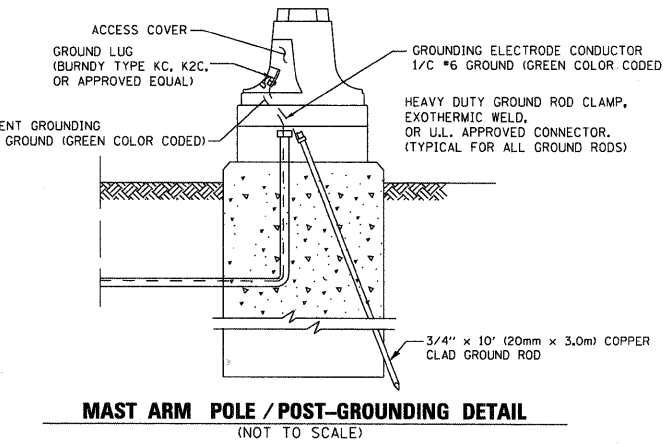


**ELECTRICAL SERVICE - PANEL DIAGRAM (TYPICAL FOR POLE AND GROUND MOUNTED SERVICE)**  
**SERVICE INSTALLATION POLE MOUNT (SHOWN)**  
 (NOT TO SCALE)



- NOTES:**
- ALL CLAMPS SHALL BE BRONZE OR COPPER, UL APPROVED.
  - GROUND CABLE SHALL BE LOOPED OVER HOOKS IN THE HANDHOLES 6.5' (2.0m) SLACK SHALL BE PROVIDED IN SINGLE HANDHOLES 13' (4.0m) OF SLACK SHALL BE PROVIDED IN DOUBLE HANDHOLES. 5' (1.4m) OF SLACK SHALL BE PROVIDED BETWEEN FRAME AND COVER.



FILE NAME =	USER NAME = #USER#	DESIGNED - DAD	REVISED -
#FILE#		DRAWN - BCK	REVISED -
	PLOT SCALE = #SCALE#	CHECKED - DAD	REVISED -
	PLOT DATE = #DATE#	DATE - 10-28-09	REVISED -

**STATE OF ILLINOIS**  
**DEPARTMENT OF TRANSPORTATION**

**DISTRICT ONE**  
**STANDARD TRAFFIC SIGNAL DESIGN DETAILS**

F.A.P.	SECTION	COUNTY	TOTAL SHEETS	SHEET NO.
TS-05			CONTRACT NO.	
SCALE: NONE SHEET NO. 3 OF 6 SHEETS STA. TO STA. FED. ROAD DIST. NO. 1 ILLINOIS FED. AID PROJECT				

USER NAME = JM	DESIGNED - DG	REVISED -
	DRAWN - JM/SM	REVISED -
PLOT SCALE = 1" = 50'	CHECKED - DG	REVISED -
PLOT DATE = 12-21-2010	DATE - 12-21-2010	REVISED -

**DISTRICT ONE**  
**STANDARD TRAFFIC DESIGN DETAILS**

F.A.P.	SECTION	COUNTY	TOTAL SHEETS	SHEET NO.
336	09-00272-01-TL	KANE	68	65
ISTD-3			CONTRACT NO. 63540	
SCALE: NONE SHEET NO. 3 OF 6 SHEETS STA. TO STA. ILLINOIS FED. AID PROJECT				