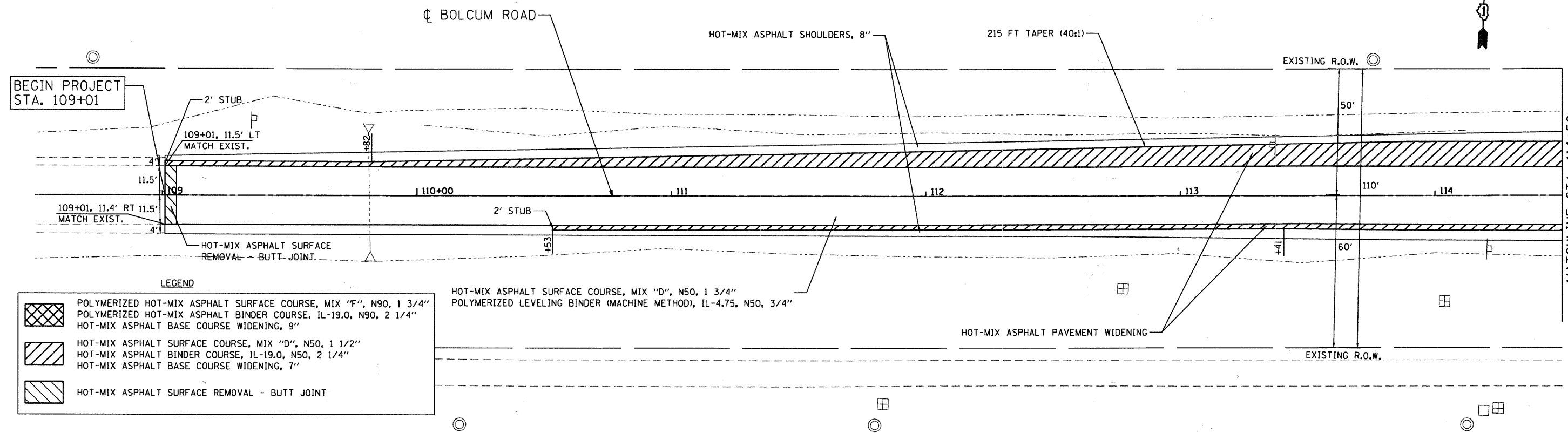


DATE	BY

DATE	BY

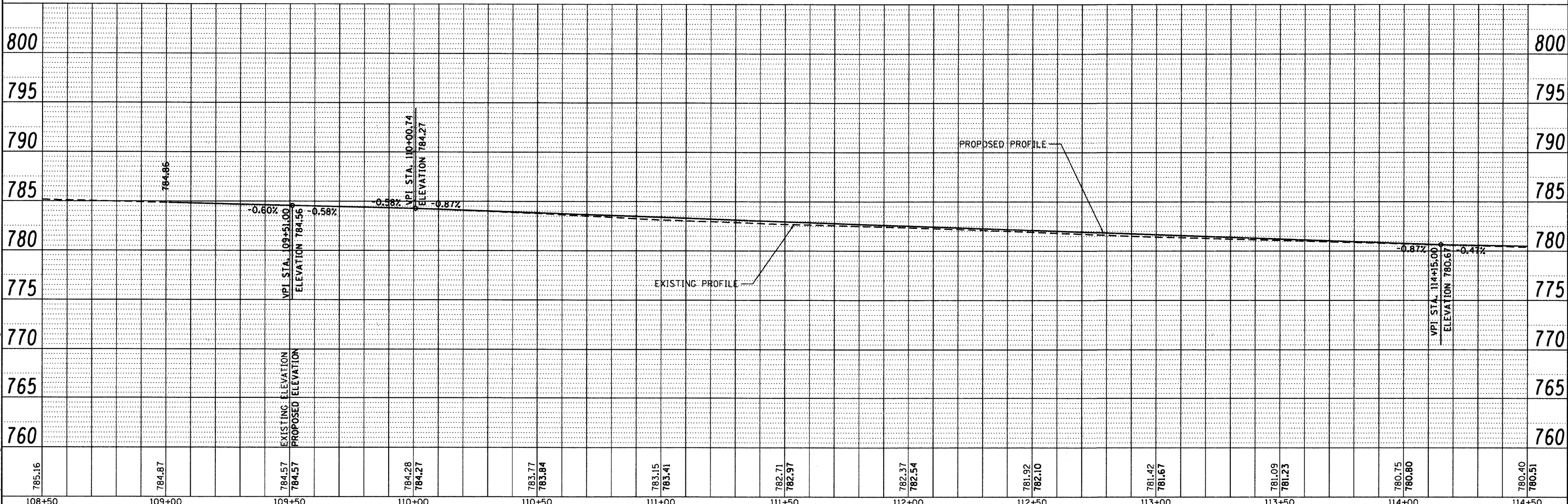
PROFILE
 DESIGNED - CLG
 DRAWN - EPS
 CHECKED - MJL
 DATE - 12/20/2010



LEGEND

	POLYMERIZED HOT-MIX ASPHALT SURFACE COURSE, MIX "F", N90, 1 3/4"
	POLYMERIZED HOT-MIX ASPHALT BINDER COURSE, IL-19.0, N90, 2 1/4"
	HOT-MIX ASPHALT BINDER COURSE, IL-19.0, N50, 2 1/4"
	HOT-MIX ASPHALT SURFACE COURSE, MIX "D", N50, 1 1/2"
	HOT-MIX ASPHALT BINDER COURSE, IL-19.0, N50, 2 1/4"
	HOT-MIX ASPHALT BASE COURSE WIDENING, 9"
	HOT-MIX ASPHALT SURFACE REMOVAL - BUTT JOINT

HOT-MIX ASPHALT SURFACE COURSE, MIX "D", N50, 1 3/4"
 POLYMERIZED LEVELING BINDER (MACHINE METHOD), IL-4.75, N50, 3/4"



785.16	784.87	784.57	784.28	783.77	783.15	782.71	782.37	781.92	781.42	781.09	780.75	780.40
108+50	109+00	109+50	110+00	110+50	111+00	111+50	112+00	112+50	113+00	113+50	114+00	114+50

Ciorba Group, Inc.
 CONSULTING ENGINEERS
 5507 North Cumberland Avenue, Suite 402
 Chicago, Illinois 60656
 Tel. 773.775.4008 Fax 773.775.4014

USER NAME = espine	DESIGNED - CLG	REVISED -
PLOT SCALE = 20.0000' / IN.	DRAWN - EPS	REVISED -
PLOT DATE = 12/20/2010	CHECKED - MJL	REVISED -
DATE - 12-20-2010	DATE - 12-20-2010	REVISED -

KANE COUNTY DIVISION OF TRANSPORTATION

PROPOSED PLAN AND PROFILE
 SCALE: 1" = 20' SHEET NO. OF SHEETS STA. TO STA.

F.A.P. RTE. 336	SECTION 04-00325-00-TL	COUNTY KANE	TOTAL SHEETS 54	SHEET NO. 15
CONTRACT NO. 63547				
FED. ROAD DIST. NO. 1 ILLINOIS FED. AID PROJECT				