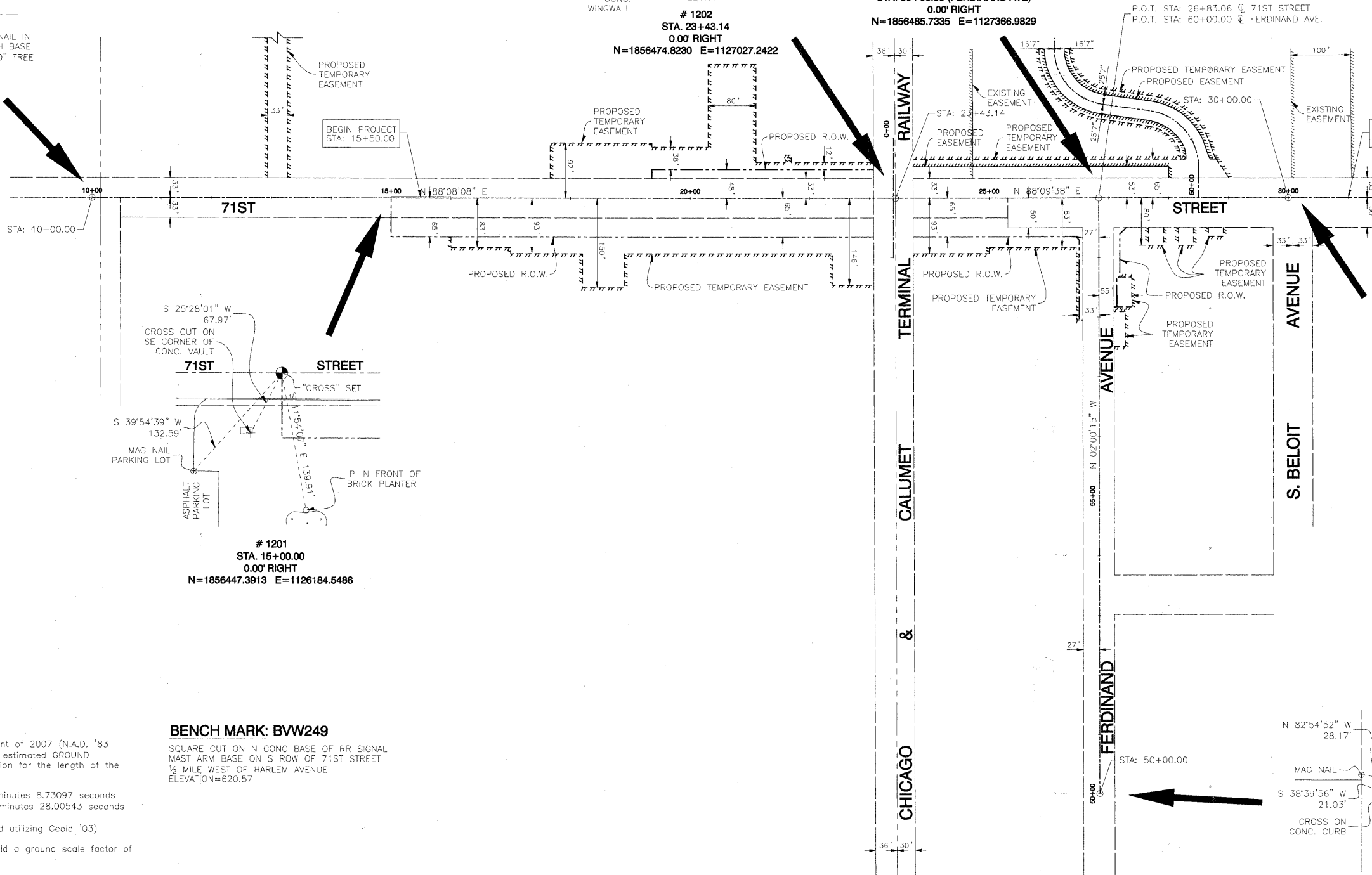
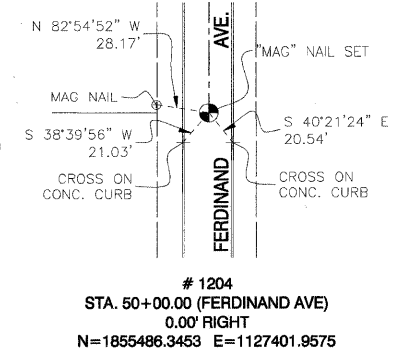
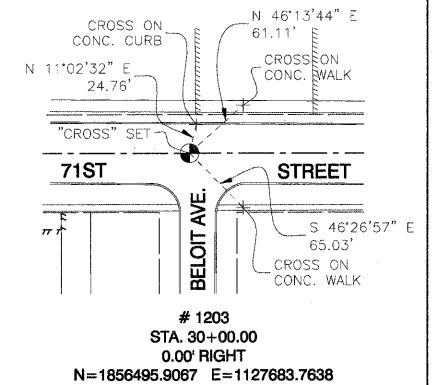
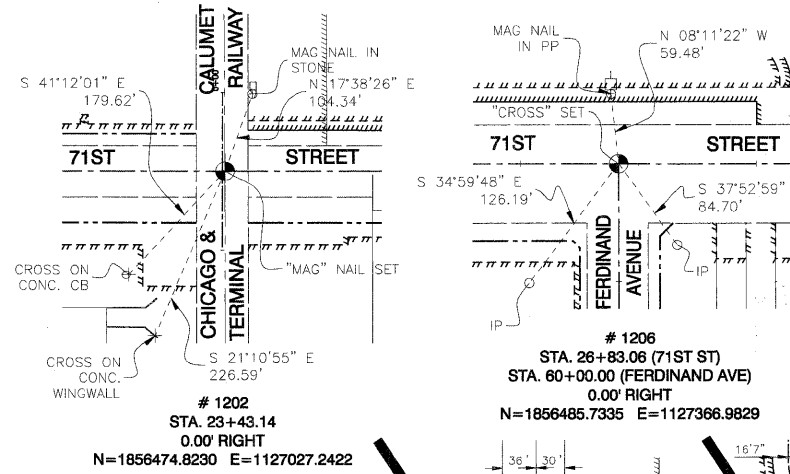
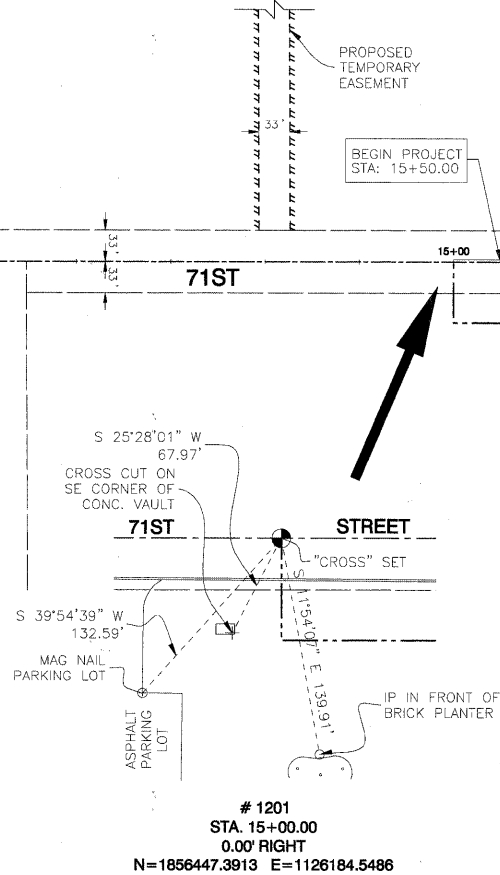
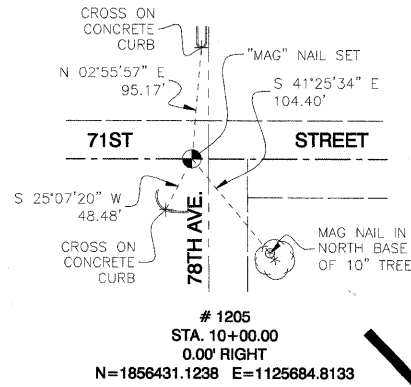


SECTION 24, TOWNSHIP 38 N, RANGE 12 E  
SECTION 25, TOWNSHIP 38 N, RANGE 12 E  
3rd PRINCIPAL MERIDIAN

NOTES:

- SEE RIGHT OF WAY PLANS / PLAT OF HIGHWAYS FOR FURTHER INFORMATION.



COORDINATE SYSTEM DEFINITION:  
North American Datum Of 1983 adjustment of 2007 (N.A.D. '83 (2007)) Illinois State Plane Eastern Zone estimated GROUND coordinates based upon on average location for the length of the project having the following parameters:  
WGS '84 North Latitude 41 degrees 46' minutes 8.73097 seconds  
WGS '84 West Longitude 87 degrees 48' minutes 28.00543 seconds  
WGS '84 Height 507.32313 feet  
Orthometric Height 616.77 feet (estimated utilizing Geoid '03)  
Utilization of these parameters should yield a ground scale factor of 1.000257189

BEARING REFERENCE DEFINITION:  
North American Datum Of 1983 adjustment of 2007 (N.A.D. '83 (2007)) Illinois State Plane Eastern Zone

**BENCH MARK: BVW249**  
SQUARE CUT ON N CONC BASE OF RR SIGNAL  
MAST ARM BASE ON S ROW OF 71ST STREET  
1/2 MILE WEST OF HARLEM AVENUE  
ELEVATION=620.57



USER NAME = manny	DESIGNED - NJH	REVISED -
PLOT SCALE = 1,000' / 1" IN.	DRAWN - NJH	REVISED -
PLOT DATE = 1/6/2011	CHECKED - TJW	REVISED -
DATE - JANUARY 7, 2010	REVISOR -	REVISED -

STATE OF ILLINOIS  
DEPARTMENT OF TRANSPORTATION

ALIGNMENT, TIES AND BENCHMARKS

SCALE: NONE SHEET NO. 1 OF 1 SHEETS STA. TO STA.

F.A.U. RTE.	SECTION	COUNTY	TOTAL SHEETS	SHEET NO.
1537	06-00050-00-GS	COOK	209	17
CONTRACT NO. 63556			FED. ROAD DIST. NO. 1 ILLINOIS FED. AID PROJECT CRE-9003709	

FILE NAME = p:\60155677\_000\_cas\001\_dr\arings\sheet\civil\150155677-sht-17.dwg