
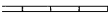
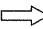




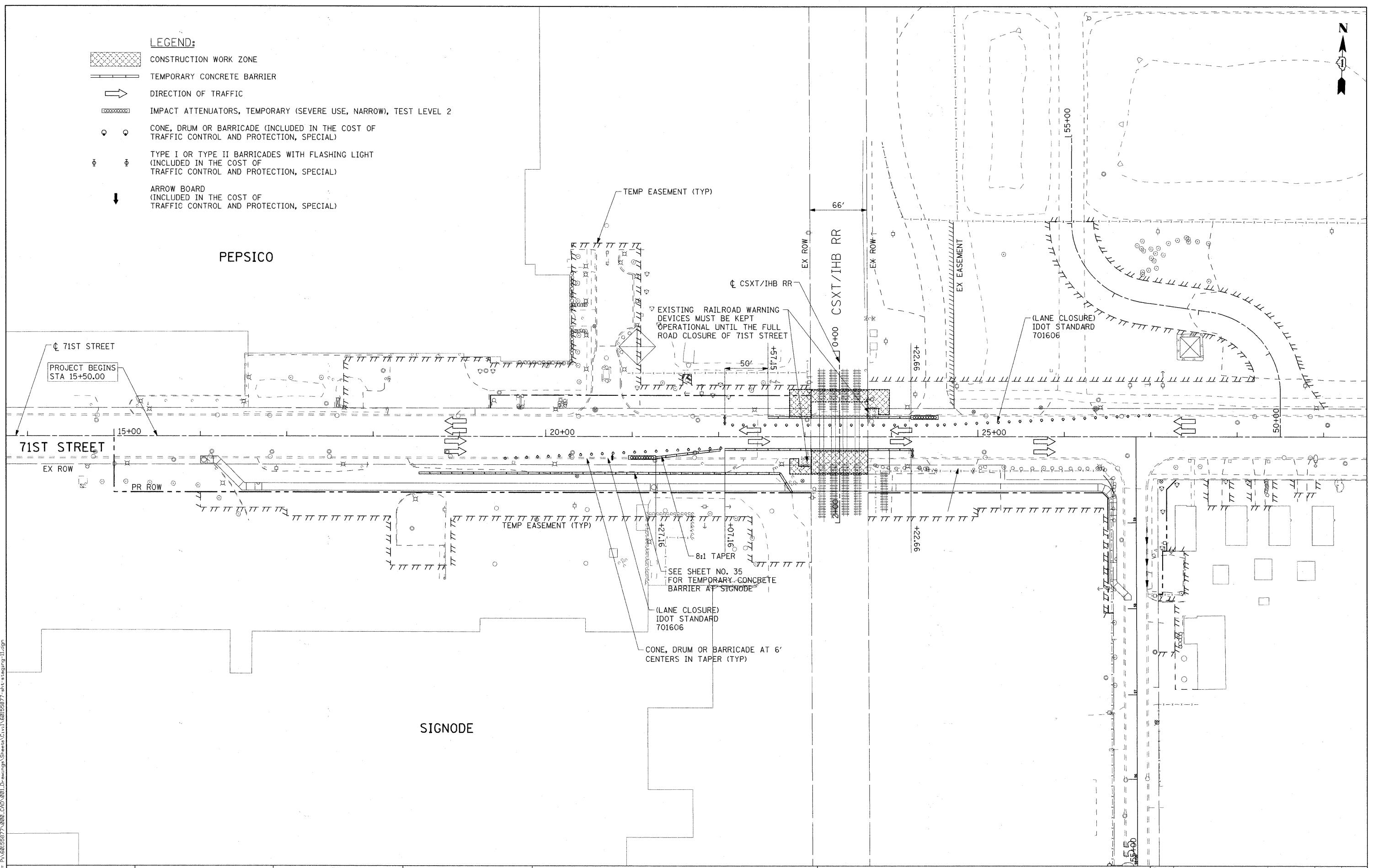


LEGEND:

-  CONSTRUCTION WORK ZONE
-  TEMPORARY CONCRETE BARRIER
-  DIRECTION OF TRAFFIC
-  IMPACT ATTENUATORS, TEMPORARY (SEVERE USE, NARROW), TEST LEVEL 2
-  CONE, DRUM OR BARRICADE (INCLUDED IN THE COST OF TRAFFIC CONTROL AND PROTECTION, SPECIAL)
-  TYPE I OR TYPE II BARRICADES WITH FLASHING LIGHT (INCLUDED IN THE COST OF TRAFFIC CONTROL AND PROTECTION, SPECIAL)
-  ARROW BOARD (INCLUDED IN THE COST OF TRAFFIC CONTROL AND PROTECTION, SPECIAL)



FILE NAME = P:\60156877\000_CAD\001_Drawing\Sheets\Civil\60156877-ht-stage3-11.dgn



USER NAME = merrnj	DESIGNED - TJW	REVISED -
PLOT SCALE = 50.000' / IN.	DRAWN - JWM	REVISED -
PLOT DATE = 1/20/2011	CHECKED - TJW	REVISED -
DATE - JANUARY 7, 2010	REVISED -	

**STATE OF ILLINOIS
DEPARTMENT OF TRANSPORTATION**

TRAFFIC CONTROL PLAN - 71ST ST - STAGE 3

SCALE: 1"=50' SHEET NO. 1 OF 10 SHEETS STA 15+50.00 TO STA 25+00.00

F.A.U. RTE. 1537	SECTION 06-00050-00-GS	COUNTY COOK	TOTAL SHEETS 209	SHEET NO. 31
CONTRACT NO. 63556			FED. ROAD DIST. NO. 1 ILLINOIS FED. AID PROJECT CRE-9003(709)	