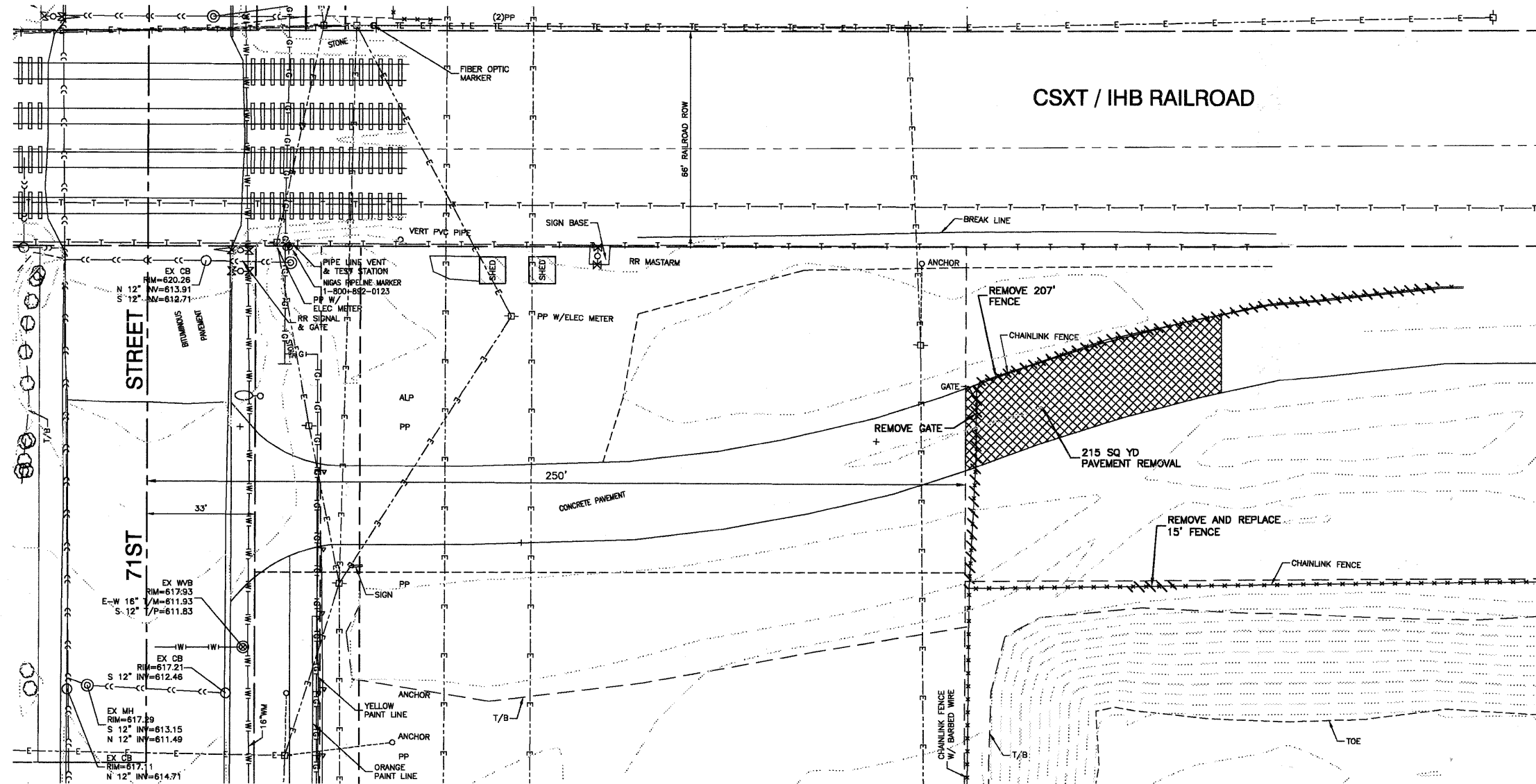




PLAN	SURVEYED	DATE
	PLOTTED	BY
	NOTED	
	RT. OF WAY CHECKED	
	NO. CAD FILE NAME	

PROFILE	SURVEYED	DATE
	PLOTTED	BY
	NOTED	
	RT. OF WAY CHECKED	
	NO. CAD FILE NAME	



**LEGEND**  
 PAVEMENT REMOVAL

**BENCH MARK: BW249**

SQUARE CUT ON N CONC BASE OF RR SIGNAL  
MAST ARM BASE ON S ROW OF 71ST STREET  
1/2 MILE WEST OF HARLEM AVENUE  
ELEVATION=620.57

FILE NAME = 09893\_02-PLPR-01 - DOT PLPR01

USER NAME =	DESIGNED -- PKB	REVISED --
	CHECKED -- PKB	REVISED --
PLOT SCALE =	DRAWN -- PS/LTL	REVISED --
PLOT DATE = 12/23/10	CHECKED -- AG	REVISED --

STATE OF ILLINOIS  
DEPARTMENT OF TRANSPORTATION

71ST STREET	
LIFT STATION EXISTING CONDITIONS & REMOVAL PLAN	
SCALE: 1"=20'	SHEET NO. 88 OF 209 SHEETS
STA.	TO STA.

F.A.U. RTE.	SECTION	COUNTY	TOTAL SHEETS	SHEET NO.
1537	06-00050-00-GS	COOK	209	88
CONTRACT NO. 63556				
FED. ROAD DIST. NO. 1 ILLINOIS FED. AID PROJECT CRE-9003(709)				