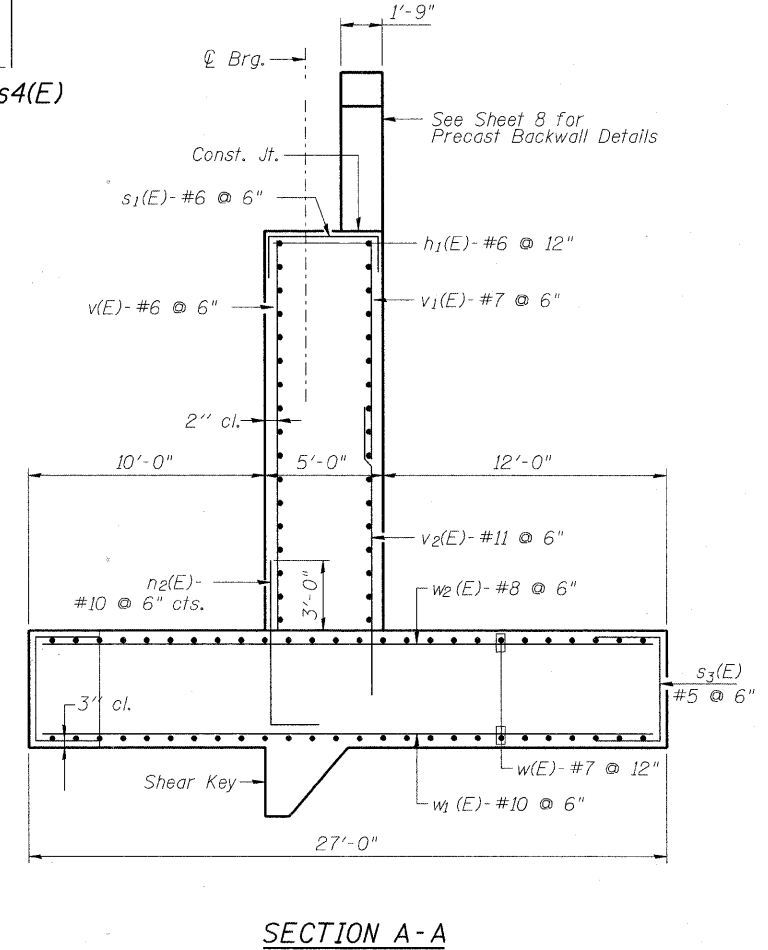
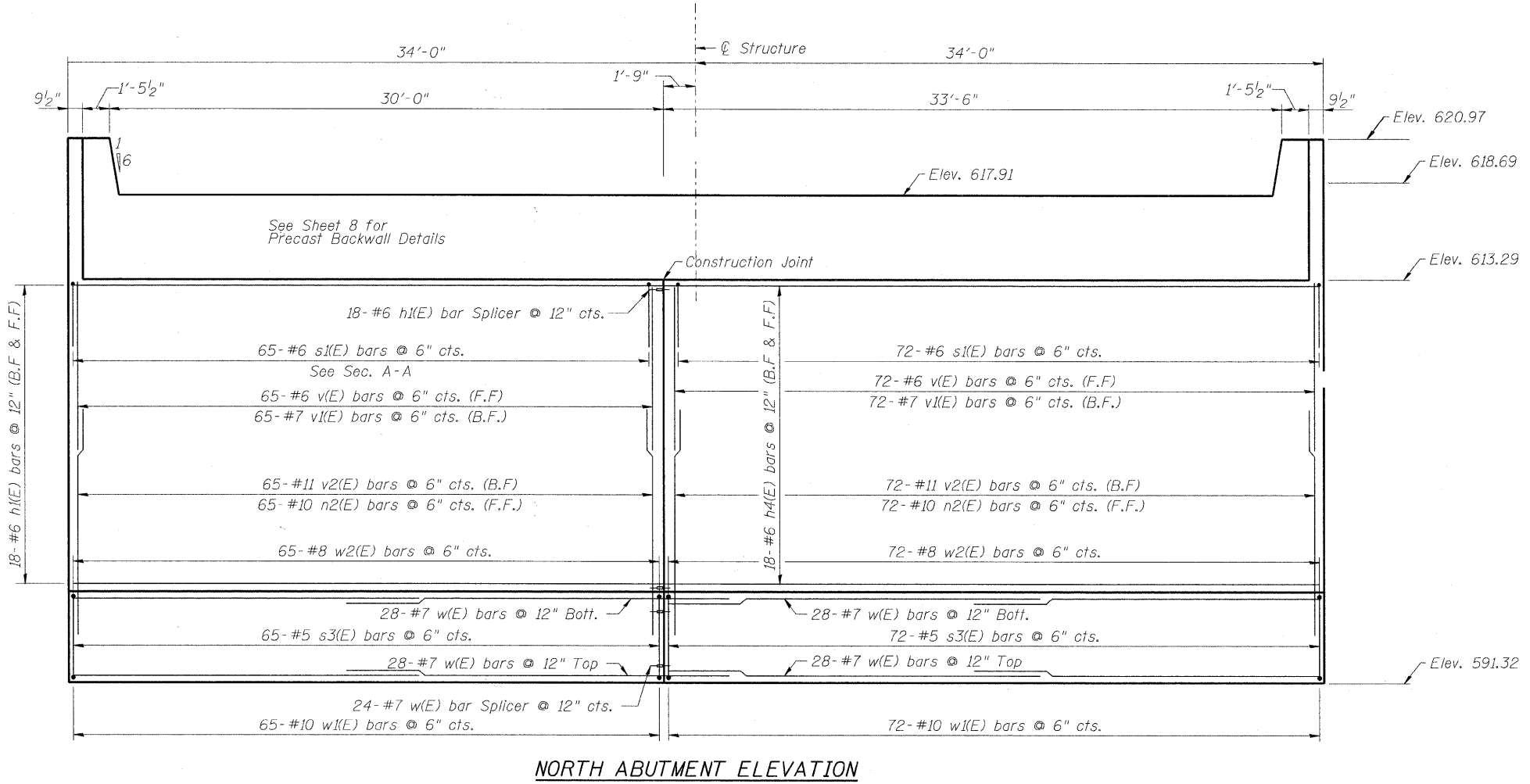


ABUTMENT BILL OF MATERIAL

Bar	No.	Size	Length	Shape
h1(E)	144	#6	20'-9"	
h2(E)	72	#5	13'-4"	
h3(E)	36	#5	4'-8"	
v(E)	137	#6	19'-6"	
v1(E)	137	#7	6'-6"	
v2(E)	137	#11	12'-6"	
s1(E)	137	#6	11'-2"	
s2(E)	192	#5	5'-0"	
s3(E)	137	#8	9'-6"	
s4(E)	4	#5	12'-6"	
s5(E)	8	#5	15'-2"	
n2(E)	137	#10	9'-1"	
w(E)	224	#7	20'-9"	
w1(E)	137	#10	26'-6"	
w2(E)	137	#8	26'-6"	
Structure Excavation			Cu. Yd.	708
Concrete Structures			Cu. Yd.	592
Reinforcement Bars, Epoxy Coated			Pound	64,768

For details of Bar Splicers, see sheet 9 of xx



FILE NAME = P:\60158977\000_CAD\001_Drawing\Sheets\Structure\016-7721_IDOT.sh07_N-Abutment-Details.dgn



USER NAME = dsbeziod
 PLOT SCALE = 0:1" = 1' IN.
 PLOT DATE = 1/21/2011

DESIGNED - BMR
 DRAWN - COM
 CHECKED - DD
 DATE - 11/23/2010

REVISED -
 REVISED -
 REVISED -
 REVISED -

**STATE OF ILLINOIS
 DEPARTMENT OF TRANSPORTATION**

**NORTH ABUTMENT REINFORCEMENT
 STRUCTURE NO. 016-7721**

SCALE: NONE SHEET NO. 7 OF 61 SHEETS STA. TO STA.

F.A.U. RTE.	SECTION	COUNTY	TOTAL SHEETS	SHEET NO.
1537	06-00050-00-GS	COOK	209	101

CONTRACT NO. 63556
 FED. ROAD DIST. NO. 1 ILLINOIS FED. AID PROJECT CRE-9003(709)