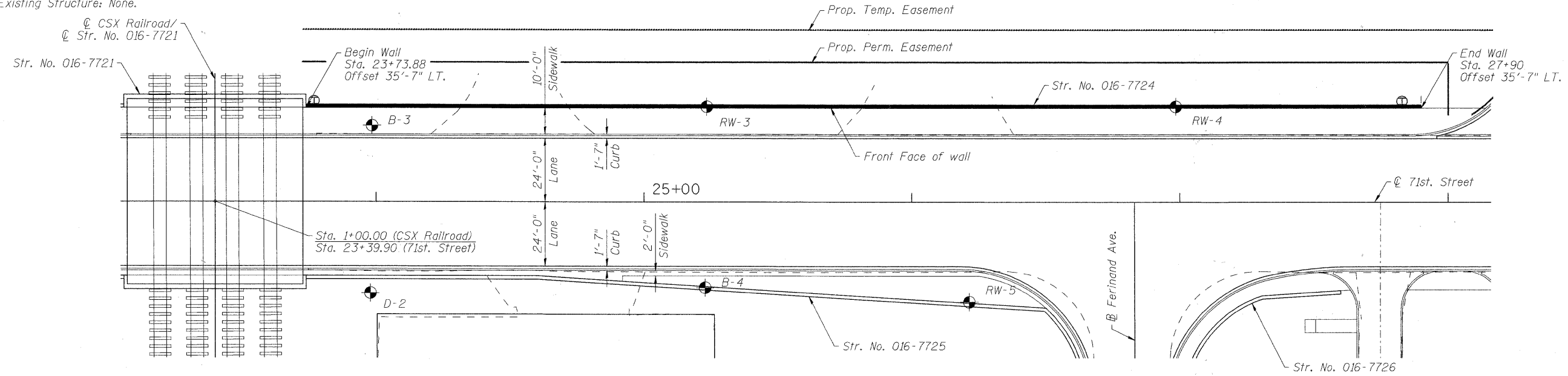


Bench Mark: BVW249 Square cut on N. conc. base of RR signal mast arm base on S. row of 71st Street 1/2 mile West of Harlem Avenue. Elev. 620.57

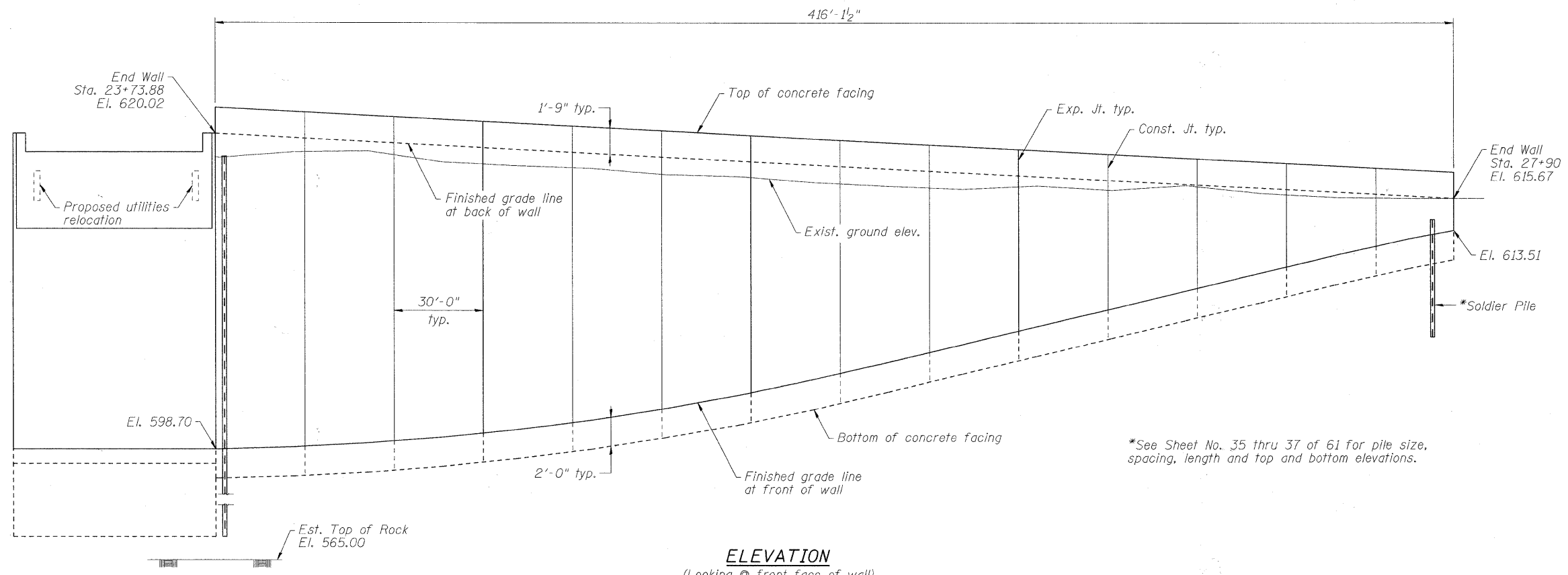
Existing Structure: None.



PLAN

NOTES:

1. Offsets are measured from the C of 71st. St. to the front face of wall.
2. Railing on top of wall not shown for clarity.



ELEVATION
(Looking @ front face of wall)

*See Sheet No. 35 thru 37 of 61 for pile size, spacing, length and top and bottom elevations.

FILE NAME = P:\60155877\000_CAD\001_Drawing\Sheet\Structure\016-7724_IDDT-sh-34-SP&E.dgn



USER NAME = debez10d	DESIGNED - DD	REVISED -
PLOT SCALE = 0:1.0000 ' / IN.	DRAWN - DD	REVISED -
PLOT DATE = 1/21/2011	CHECKED - EJO	REVISED -
	DATE - 10/11/2010	REVISED -

STATE OF ILLINOIS
DEPARTMENT OF TRANSPORTATION

GENERAL PLAN & ELEVATION
STRUCTURE NO. 016-7724

SCALE: SHEET NO. 34 OF 61 SHEETS STA. TO STA.

F.A.U. RTE.	SECTION	COUNTY	TOTAL SHEETS	SHEET NO.
1537	06-00050-00-GS	COOK	209	128
CONTRACT NO. 63556				
ILLINOIS FED. AID PROJECT				