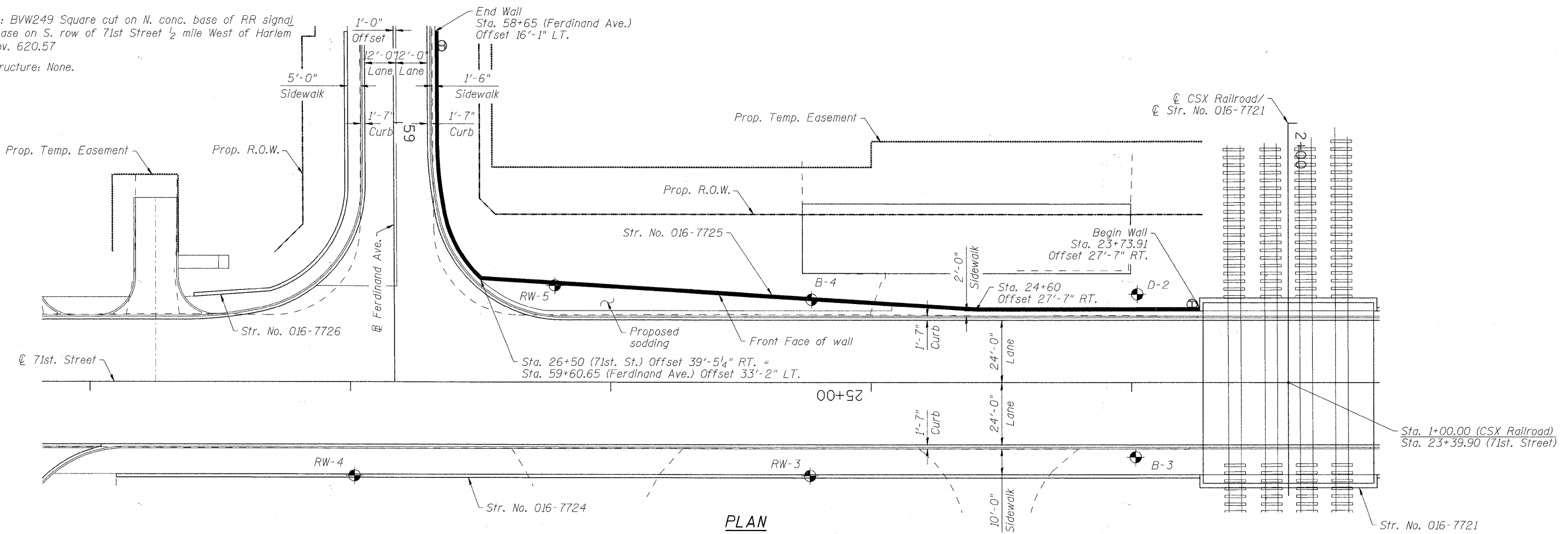
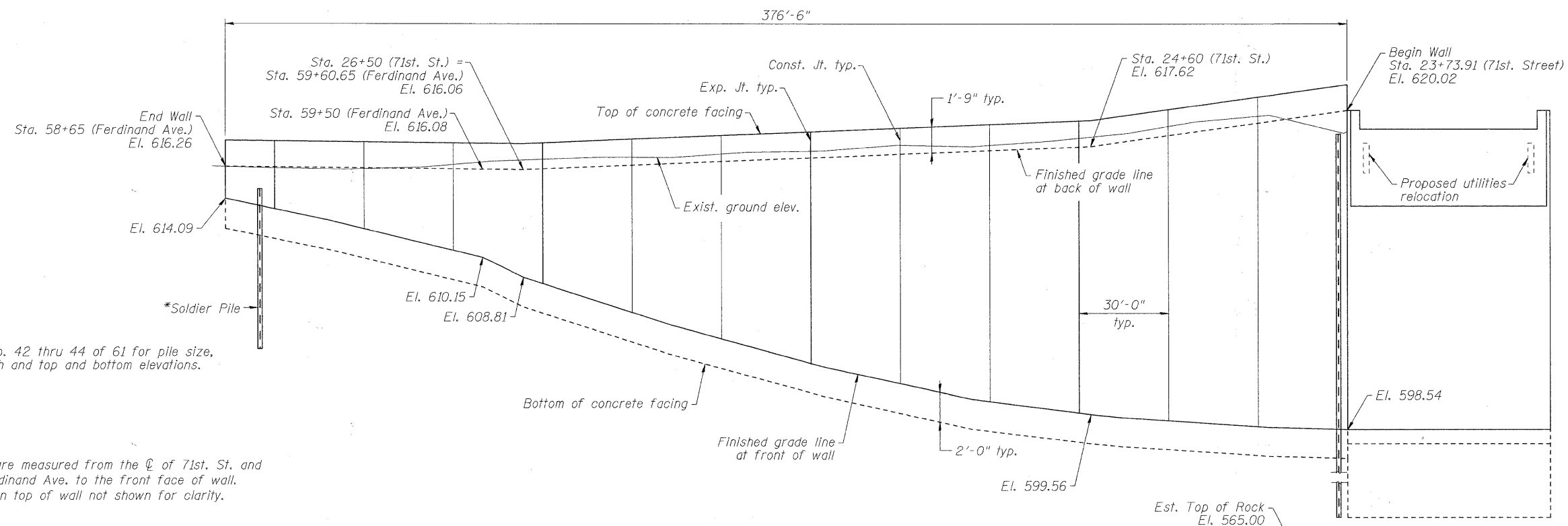


Bench Mark: BVW249 Square cut on N. conc. base of RR signal mast arm base on S. row of 71st Street 1/2 mile West of Harlem Avenue. Elev. 620.57

Existing Structure: None.



PLAN



ELEVATION
(Unfolded elevation view)
(Looking @ front face of wall)

*See Sheet No. 42 thru 44 of 61 for pile size, spacing, length and top and bottom elevations.

NOTES:

- Offsets are measured from the \odot of 71st St. and \oplus of Ferdinand Ave. to the front face of wall.
- Railing on top of wall not shown for clarity.



USER NAME = dabezi04	DESIGNED - DD	REVISED -
PLOT SCALE = 0:1.0000 1' / IN.	DRAWN - DD	REVISED -
PLOT DATE = 1/21/2011	CHECKED - EJO	REVISED -
	DATE - 10/11/2010	REVISED -

**STATE OF ILLINOIS
DEPARTMENT OF TRANSPORTATION**

**GENERAL PLAN & ELEVATION
STRUCTURE NO. 016-7725**

SCALE: SHEET NO. 41 OF 61 SHEETS STA. TO STA.

F.A.U. RTE. 1537	SECTION 06-00050-00-G5	COUNTY COOK	TOTAL SHEETS 209	SHEET NO. 135
CONTRACT NO. 63556				ILLINOIS FED. AID PROJECT

FILE NAME = P:\60158877\000 CAD\01 Drawings\Sheets\Structural\01E-7725-1001.sht41-CP&E.dgn