

PROJECT ENGINEER - REBECCA MARRUFFO

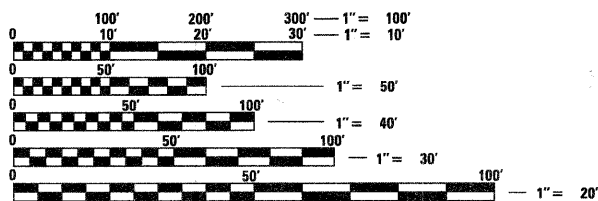
SQUAD LEADER - BRAD CUSHMAN (815)284-5996

INDEX

- 1 COVER SHEET
- 2-3 SUMMARY OF QUANTITIES
- 4-5 GENERAL NOTES
- 6 TYPICAL SECTIONS
- 7-8 SCHEDULE OF QUANTITIES
- 9-10 HORIZONTAL & VERTICAL CONTROL
- 11 PLAN & PROFILE
- 12-16 GABION WALL DETAIL
- 17 BORING LOGS
- 18 DETOUR ROUTE DETAIL
- 19 CURB AND GUTTER OUTLET, SPECIAL (18.4)
- 20 DELINEATOR AND POST ORIENTATION (37.4)
- WITNESS MARKER & PERMANENT SURVEY MARKERS, TYPE II (66.2)
- NAME PLATE FOR CULVERTS (88.2)
- 21 ENTRANCE APPROACHES - URBAN AREA (25.1)
- 22 TRAFFIC CONTROL FOR ROAD CLOSURE (40.1)
- 23 DETAILS OF PLANTING AND BRACING TREES (92.1)
- 24-25 CROSS SECTIONS

STATE STANDARDS

- 280001-05 TEMPORARY EROSION CONTROL SYSTEMS
- 420001-07 PAVEMENT JOINTS
- 442201-03 CLASS C AND D PATCHES
- 606001-04 CONCRETE CURB TYPE B AND COMBINATION CONCRETE CURB AND GUTTER
- 635001-01 DELINEATORS
- 701006-03 TYPICAL APPLICATION OF TRAFFIC CONTROL STANDARD
- 701301-04 TYPICAL APPLICATION OF TRAFFIC CONTROL STANDARD
- 701501-06 TYPICAL APPLICATION OF TRAFFIC CONTROL STANDARD
- 701311-03 TYPICAL APPLICATION OF TRAFFIC CONTROL STANDARD
- 701901-01 TRAFFIC CONTROL DEVICES
- 720011-01 METAL POST FOR SIGNS, MARKERS AND DELINEATORS
- 728001-01 TELESCOPING STEEL SIGN SUPPORT
- 729001-01 APPLICATIONS OF TYPES A & B METAL POSTS (FOR SIGNS & MARKERS)
- 780001-02 TYPICAL PAVEMENT MARKINGS



FULL SIZE PLANS HAVE BEEN PREPARED USING STANDARD ENGINEERING SCALES. REDUCED SIZED PLANS WILL NOT CONFORM TO STANDARD SCALES. IN MAKING MEASUREMENTS ON REDUCED PLANS, THE ABOVE SCALES MAY BE USED.

J.U.L.I.E.
JOINT UTILITY LOCATION INFORMATION FOR EXCAVATION
1-800-892-0123
OR 811

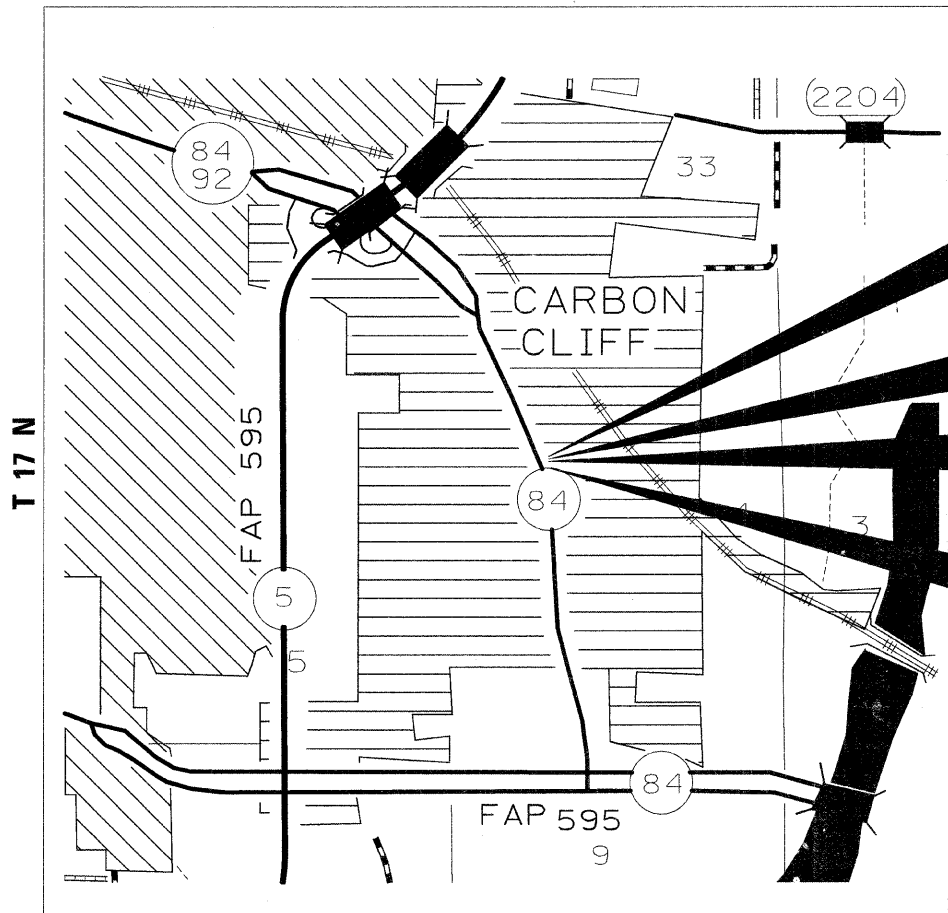
CONTRACT NO. 64E31

STATE OF ILLINOIS
DEPARTMENT OF TRANSPORTATION
DIVISION OF HIGHWAYS
**PROPOSED
HIGHWAY PLANS**

FAU ROUTE 5857 (IL 84)
SECTION 1R-T
PROJECT M - 5857(001)

ROCK ISLAND COUNTY

C-92-188-09



IMPROVEMENT BEGINS STA. 67 + 77

SECTION BEGINS STA. 68 + 74

SECTION ENDS STA. 69 + 27

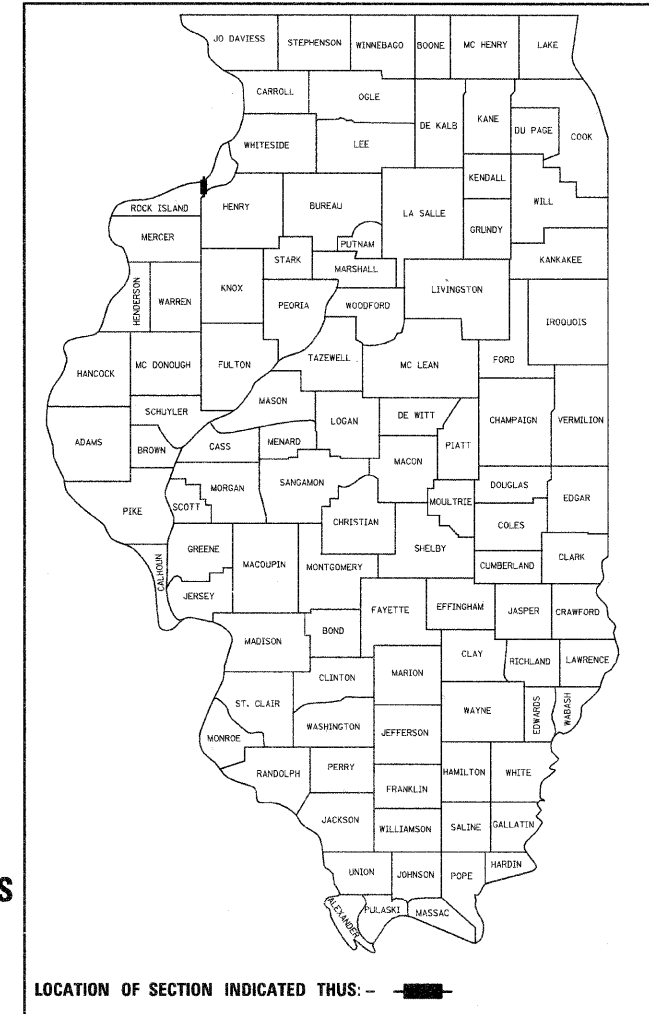
IMPROVEMENT ENDS STA. 70 + 00

HAMPTON TOWNSHIP, SECTION 4

GROSS LENGTH = 53 FT. = 0.01 MILE
NET LENGTH = 53 FT. = 0.01 MILE

| | | | | |
|---------------------|----------|--------------------|--------------|-----------|
| F.A.U. RTE. | SECTION | COUNTY | TOTAL SHEETS | SHEET NO. |
| 5857 | 1R-T | Rock Island | 25 | 1 |
| FED. ROAD DIST. NO. | ILLINOIS | CONTRACT NO. 64E31 | | |

D-92-084-08



STATE OF ILLINOIS
DEPARTMENT OF TRANSPORTATION
DIVISION OF HIGHWAYS

SUBMITTED Oct 8 20 10
George F. Ryan
DEPUTY DIRECTOR OF HIGHWAYS, REGION ENGINEER

December 10 20 10
Scott E. Stitt, P.E.
acting ENGINEER OF DESIGN AND ENVIRONMENT

December 10 20 10
Christine M. Reed
DIRECTOR OF HIGHWAYS, CHIEF ENGINEER

**PRINTED BY THE AUTHORITY
OF THE STATE OF ILLINOIS**