

F.A.P. RTE.	SECTION	COUNTY	TOTAL SHEETS	SHEET NO.
517	L-M-4	BOONE	54	1
		ILLINOIS	CONTRACT NO. 64F80	

STATE OF ILLINOIS
DEPARTMENT OF TRANSPORTATION
DIVISION OF HIGHWAYS

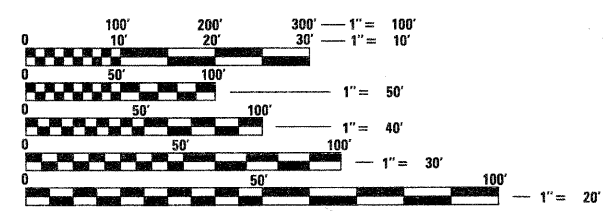
PROPOSED
HIGHWAY PLANS
FAP ROUTE 517 (US BUS 20)
SECTION L-M-4
PROJECT: HSIP-0517(058)
WIDENING & RESURFACING
BOONE COUNTY
C-92-147-10

FOR INDEX OF SHEETS, SEE SHEET NO. 2
 FOR STATE STANDARDS, SEE SHEET NO. 2

BEVIDERE TOWNSHIP, SECTION 21

IMPROVEMENT ENDS
 STA 139 + 51.5
 SECTION ENDS
 STA 138 + 76.5

IMPROVEMENT BEGINS
 STA 120 + 20
 SECTION BEGINS
 STA 120 + 95

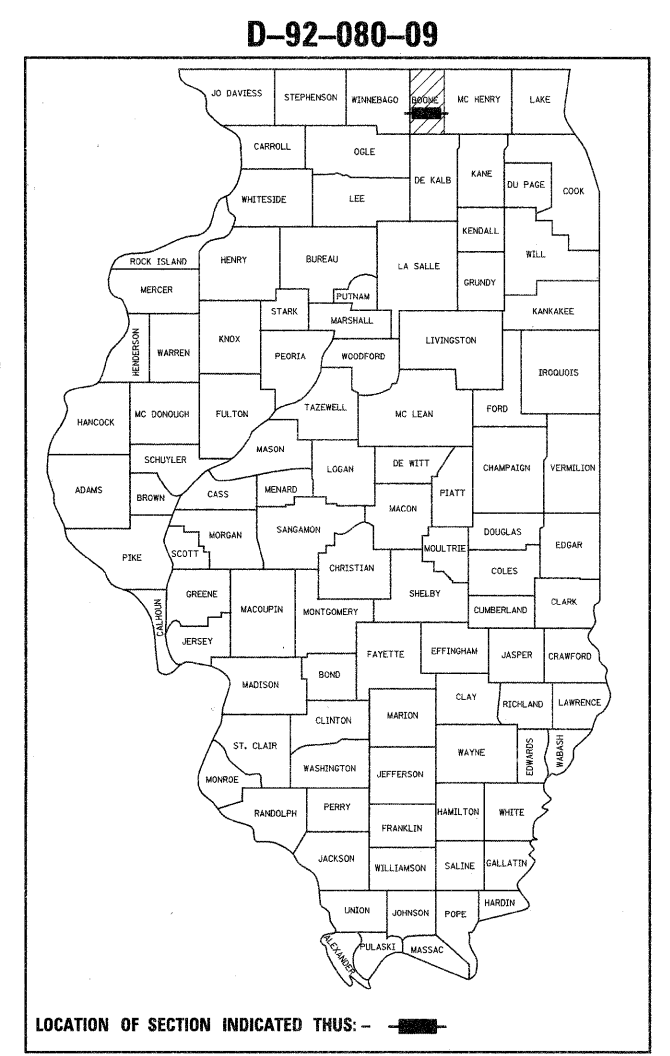
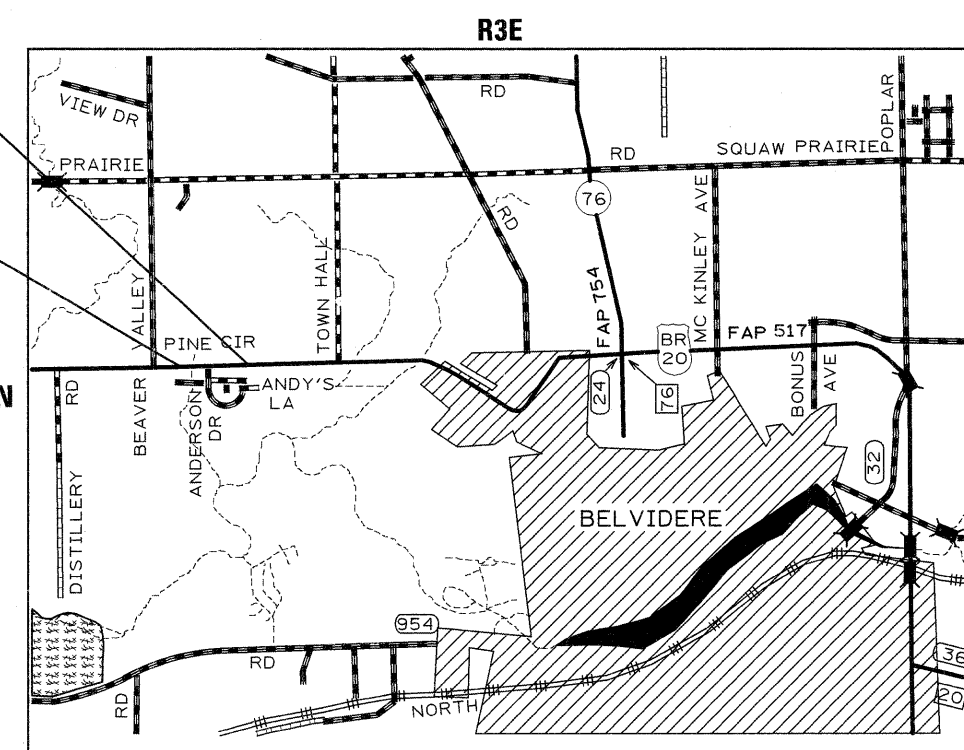


FULL SIZE PLANS HAVE BEEN PREPARED USING STANDARD ENGINEERING SCALES. REDUCED SIZED PLANS WILL NOT CONFORM TO STANDARD SCALES. IN MAKING MEASUREMENTS ON REDUCED PLANS, THE ABOVE SCALES MAY BE USED.

J.U.L.I.E.
 JOINT UTILITY LOCATION INFORMATION FOR EXCAVATION
 1-800-892-0123
 OR 811

PROJECT ENGINEER: MASOOD AHMAD
 SENIOR SQUAD LEADER: SAM ABDULLAH (815) 284-5935
 SQUAD LEADER: COREY CONDERMAN (815) 284-5936
 CONTRACT NO. 64F80

GROSS LENGTH = 1781.5 FT. = 0.337 MILE
 NET LENGTH = 1781.5 FT. = 0.337 MILE



STATE OF ILLINOIS
 DEPARTMENT OF TRANSPORTATION
 DIVISION OF HIGHWAYS

SUBMITTED DEC. 10 20 10
Gregory R. Ryan
 DEPUTY DIRECTOR OF HIGHWAYS, REGION ENGINEER

February 4 20 11
Scott E. Stitt, P.E.
 acting ENGINEER OF DESIGN AND ENVIRONMENT

February 4 20 11
Christine M. Reed
 DIRECTOR OF HIGHWAYS, CHIEF ENGINEER

PRINTED BY THE AUTHORITY
OF THE STATE OF ILLINOIS