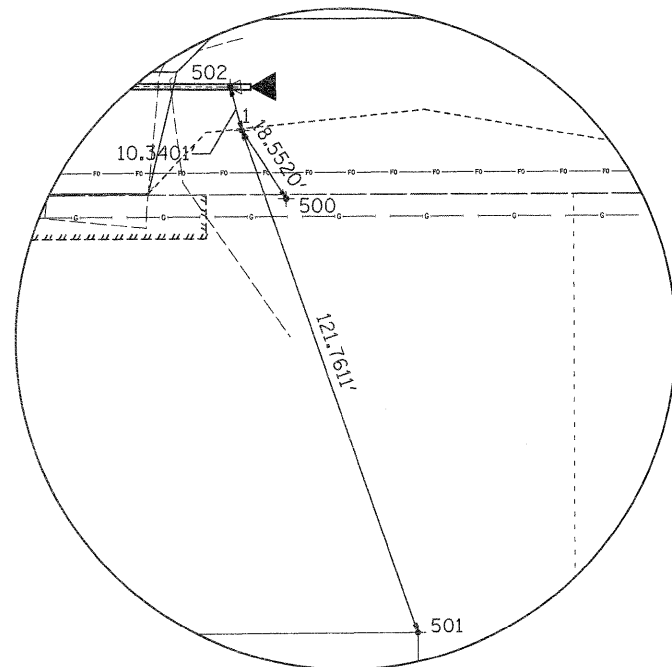


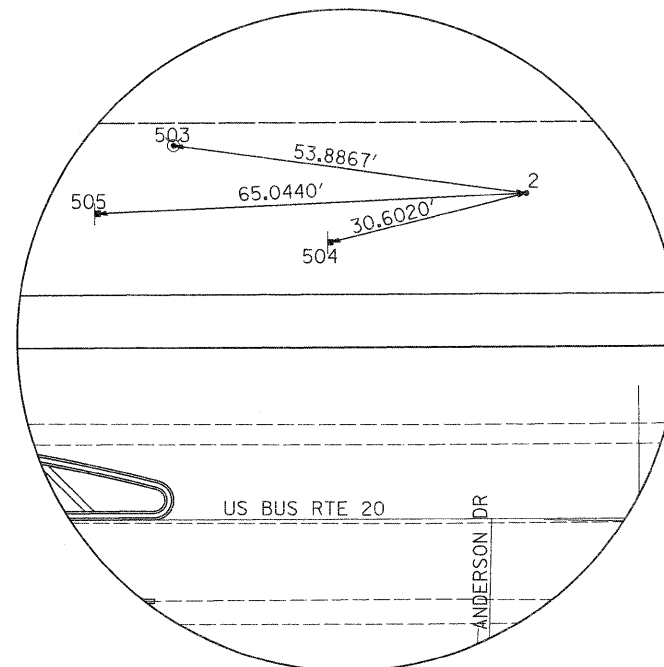
# HORIZONTAL & VERTICAL CONTROL

HORIZONTAL CONTROL POINTS							
POINT	NORTH	EAST	ELEVATION	CHAIN	STATION	OFFSET	DESCRIPTION
1	2043729.0335	831980.4534	791.1198	BUS_20	121+58.3057	45.3365' RT	GPS CONTROL POINT, PIN
2	2043827.0187	832604.6943	795.0258	BUS_20	127+83.0784	49.1984' LT	GPS CONTROL POINT, PIN
3	2043752.7856	833108.0217	789.9420	BUS_20	132+85.9880	27.8143' RT	GPS CONTROL POINT, PIN
37	2043717.4494	832596.7362	.0000	BUS_20	127+74.5150	60.3253' RT	CALCULATED POINT
39	2043717.4211	832598.4688	.0000	BUS_20	127+76.2475	60.3631' RT	CALCULATED POINT
65723053	2017681.8057	799317.2944	821.3160	BUS_20	OUT OF CHAIN	-----	PERM. SURVEY MARKER
78721637	2059970.1377	848126.2197	851.9583	BUS_20	OUT OF CHAIN	-----	PERM. SURVEY MARKER

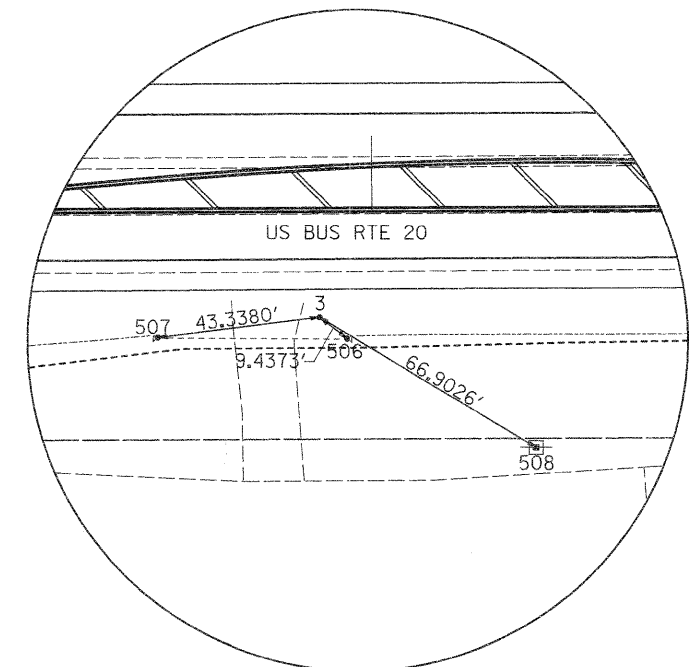
REFERENCE TIES						
POINT	NORTH	EAST	CHAIN	STATION	OFFSET	DESCRIPTION
500	2043713.4783	831990.5635	BUS_20	121+68.3296	60.9473' RT	POWER POLE
501	2043614.1648	832020.8386	BUS_20	121+98.0556	160.4265' RT	COMMERCIAL BUILDING
502	2043739.0076	831977.7270	BUS_20	121+55.6344	35.3474' RT	PIPE CULVERT
503	2043834.1134	832551.2767	BUS_20	127+29.7008	56.5882' LT	FIRE HYDRANT
504	2043819.5641	832575.0142	BUS_20	127+53.3576	41.9079' LT	WARNING SIGN
505	2043823.8367	832539.7282	BUS_20	127+18.0957	46.3754' LT	WARNING SIGN
506	2043747.0044	833115.4809	BUS_20	132+93.4151	33.6367' RT	PIPE CULVERT
507	2043747.2586	833065.0377	BUS_20	132+42.9740	33.1038' RT	PIPE CULVERT
508	2043718.4822	833165.4606	BUS_20	133+43.2365	62.4346' RT	POWER POLE



HORIZONTAL CONTROL POINT No. 1



HORIZONTAL CONTROL POINT No. 2



HORIZONTAL CONTROL POINT No. 3