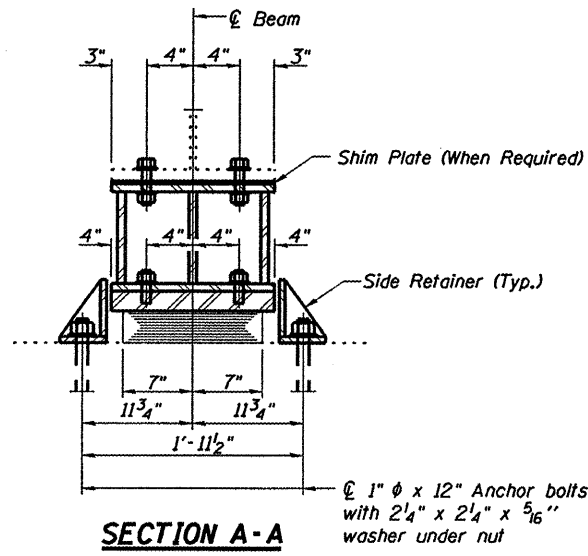


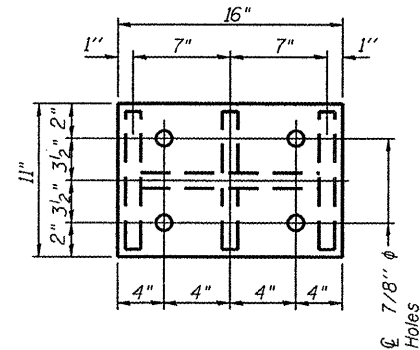
ELEVATION AT ABUTMENT



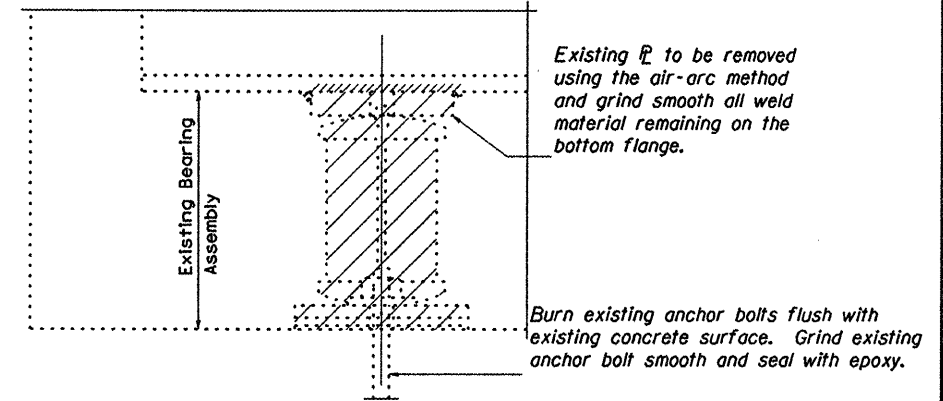
SECTION A-A

BEAM REACTIONS

R _D	(K)	46.7
R _L	(K)	41.8
Imp.	(K)	9.3
R (Total)	(K)	97.8



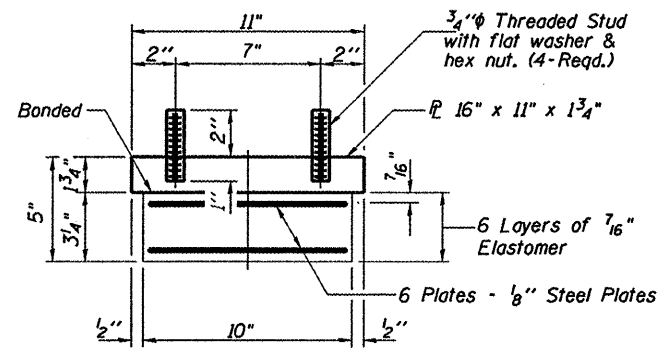
PLAN TOP AND BOTTOM PLATE



EXISTING BEARING REMOVAL DETAIL

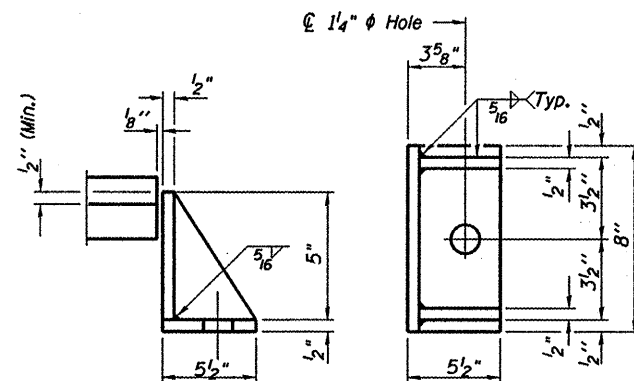
Cost included with Jack and Remove Existing Bearings.

TYPE I ELASTOMERIC EXP. BRG.

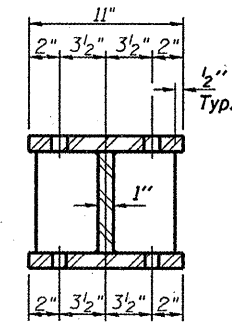


BEARING ASSEMBLY

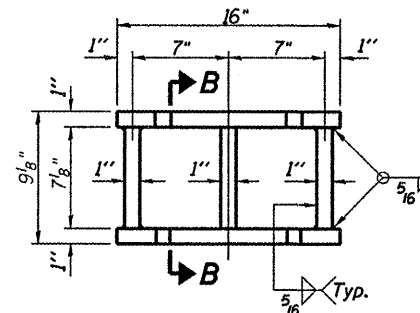
Note: Shim plates shall not be placed under Bearing Assembly.



SIDE RETAINER

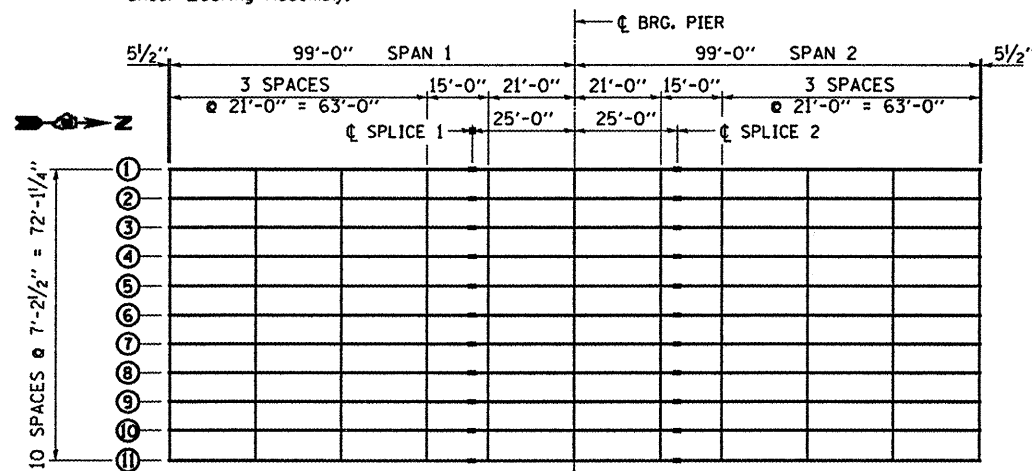


SECTION B-B



STEEL EXTENSION DETAIL

Notes:
 Diaphragm removal and reinstallation may be required to facilitate drilling holes. Cost included with Furnishing and Erecting Structural Steel.
 New steel extensions, shim plates and connection bolts are included with Furnishing and Erecting Structural Steel.
 Prior to ordering any material, the Contractor shall verify in the field all bearing height and shim thickness dimensions.
 Anchor bolts shall be ASTM F1554 all-thread (or an Engineer-approved alternate material) of the grade(s) and diameter(s) specified. ASTM A307 Grade C anchor bolts may be used in lieu of ASTM F1554 Grade 36 (F_y=36ksi). The corresponding specified grade of AASHTO M314 anchor bolts may be used in lieu of ASTM F1554.
 Anchor bolts at fixed bearings may be either cast in place or installed in holes drilled after the supported member is in place.
 Drilled and set anchor bolts shall be installed according to Article 521.06 of the Standard Specifications.
 Side retainers shall be included in the cost of Elastomeric Bearing Assembly, Type I.
 The structural steel plates of the bearing assembly shall conform to the requirements of AASHTO M 270 grade 50.
 Two adjusting shims shall be provided for each bearing in addition to all other plates or shims as shown on bearing details.
 All (embedded and separate) bearing plates, side retainers, anchor bolts, nuts and washers shall be galvanized according to AASHTO M111 or M232 as applicable.
 H.S. bolts in bearing assembly shall be galvanized according to AASHTO M298 Class 50.



FRAMING PLAN

NORTH ABUTMENT	
BEAM NO.	NO. 1/8" SHIMS
1	
2	1/2"
3	3/8"
4	3/8"
5	1/2"
6	3/8"
7	1/4"
8	1/2"
9	3/4"
10	3/4"
11	3/8"

SOUTH ABUTMENT	
BEAM NO.	NO. 1/8" SHIMS
1	
2	1/4"
3	1/2"
4	3/8"
5	1/2"
6	3/4"
7	3/4"
8	1"
9	3/8"
10	1/2"
11	

BILL OF MATERIAL

Item	Unit	Total
Elastomeric Bearing Assembly, Type I	Each	22
Jack and Remove Existing Bearings	Each	22
Furnishing and Erecting Structural Steel	Pound	4010
Anchor Bolts 1"φ	Each	44

BEARING REPLACEMENT DETAILS
 FAS 2370 (IL 26) SECTION (78-1HB-11)
 PUTNAM COUNTY
 STA. 40+00.00
 S.N. 078-0010

Rev. 3-2-11

FILE NAME =	USER NAME = woodshenkr1	DESIGNED - RLW	REVISED - RLW 02/04/2011
cr:\pw\work\pudot\woodshenkr1\08257413\366A27-details.dgn		DRAWN - RLW	REVISED -
	PLOT SCALE = 100.0000' / IN.	CHECKED -	REVISED -
	PLOT DATE = Feb 04, 2011 - 11:34:06 AM	DATE -	REVISED -

STATE OF ILLINOIS
 DEPARTMENT OF TRANSPORTATION

BEARING REPLACEMENT DETAILS

SCALE: SHEET NO. 10 OF 12 SHEETS STA. TO STA.

F.A.S. RTE. 2370	SECTION (78-1HB-11)	COUNTY PUTNAM	TOTAL SHEETS 18	SHEET NO. 16
CONTRACT NO. 66A27			ILLINOIS FED. AID PROJECT	