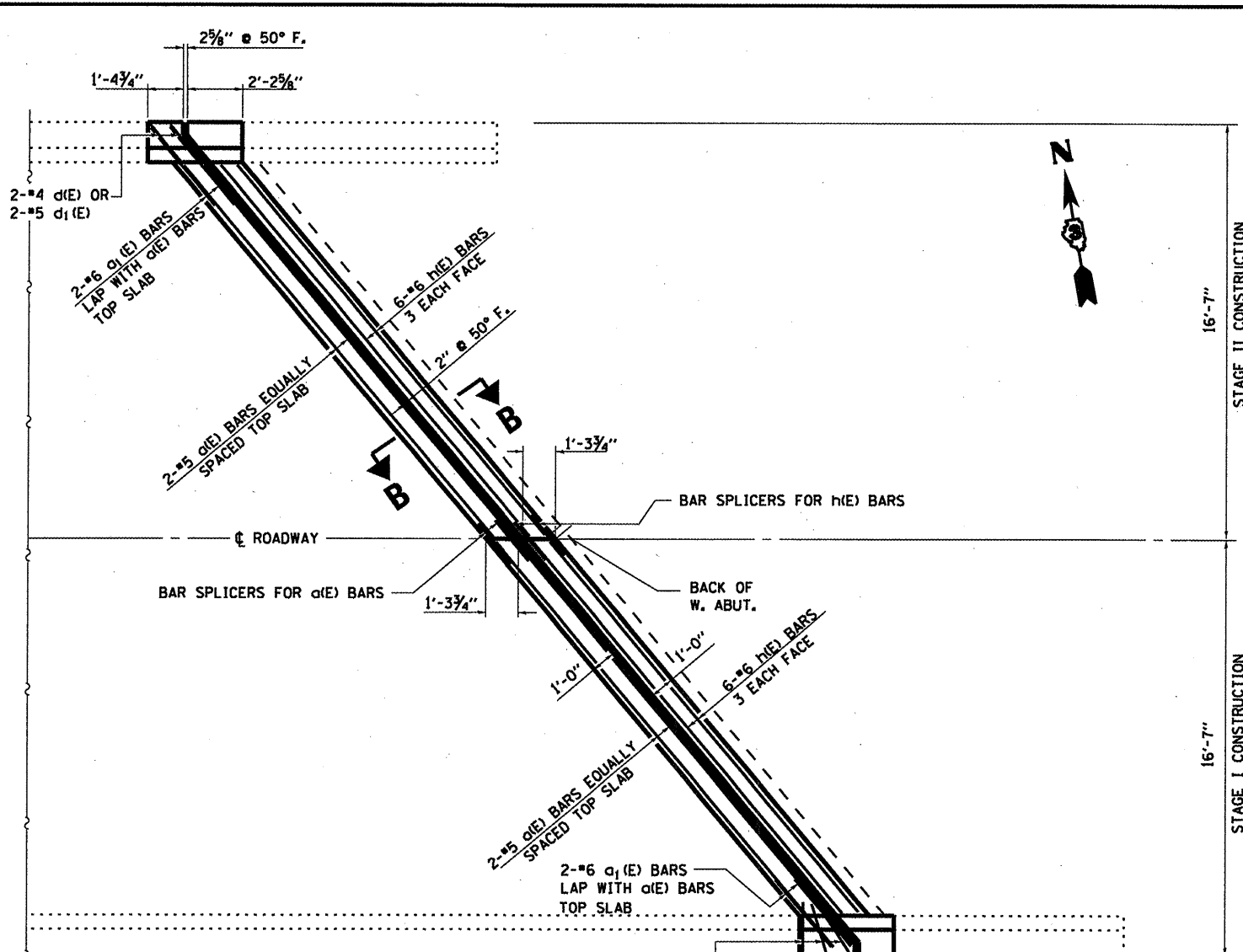
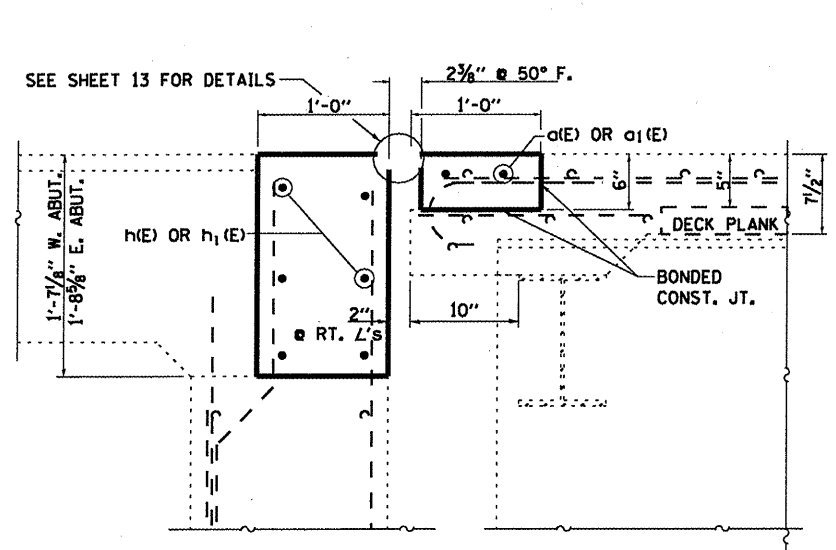


**NOTE:**  
 EXISTING VERTICAL BARS IN ABUTMENTS SHALL BE STRAIGHTENED, CLEANED AND INCORPORATED INTO THE NEW CONSTRUCTION. IF EXISTING BARS ARE DETERIORATED OR DAMAGED, THE CONTRACTOR SHALL FURNISH, DRILL AND EPOXY NEW REINFORCEMENT BARS OF THE SAME SIZE AT THE INTERIOR FACE OF THE DAMAGED OR DETERIORATED BARS A MINIMUM OF 9" INTO EXISTING CONCRETE. COST OF THIS WORK WHEN REQUIRED SHALL BE ACCORDING TO ARTICLE 109.04 OF THE STANDARD SPECIFICATIONS, TYPICAL AT EACH ABUTMENT

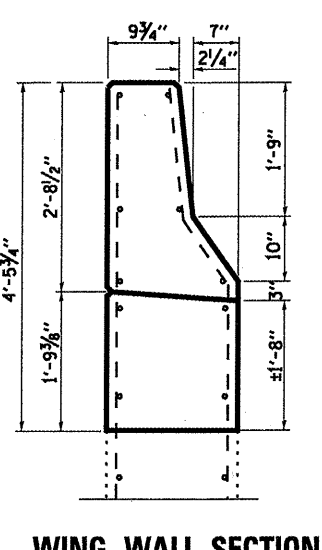
**PLAN @ WEST ABUTMENT**



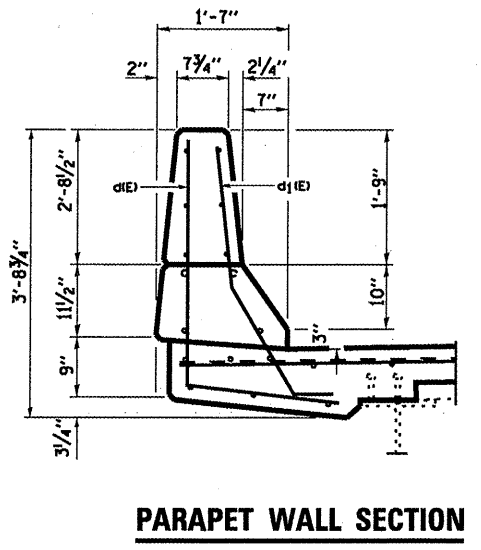
**PLAN @ EAST ABUTMENT**



**SECTION B-B AT RT. L'S**



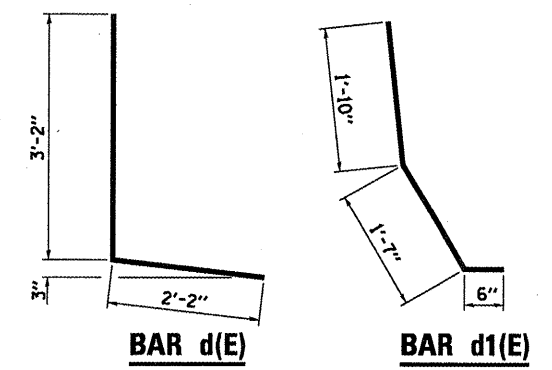
**WING WALL SECTION AT RT. L'S**



**PARAPET WALL SECTION AT RT. L'S**

**BILL OF MATERIAL**

Bar	No.	Size	Length	Shape
d(E)	8	#5	20'-11"	
d1(E)	8	#6	4'-0"	
d(E)	10	#4	5'-4"	
d1(E)	10	#5	3'-11"	
h(E)	24	#6	19'-3"	
Reinforcement Bars, Epoxy Coated		Pound	2100	
Concrete Superstructure		Cu. Yds.	4.2	
Concrete Structure		Cu. Yds.	6.8	



**EXPANSION JOINT REPLACEMENT DETAILS**  
 F.A.S. 2246 (US 6) SECTION (13C-BR1)  
 BUREAU COUNTY  
 STA. 297+80.00  
 S.N. 006-0137