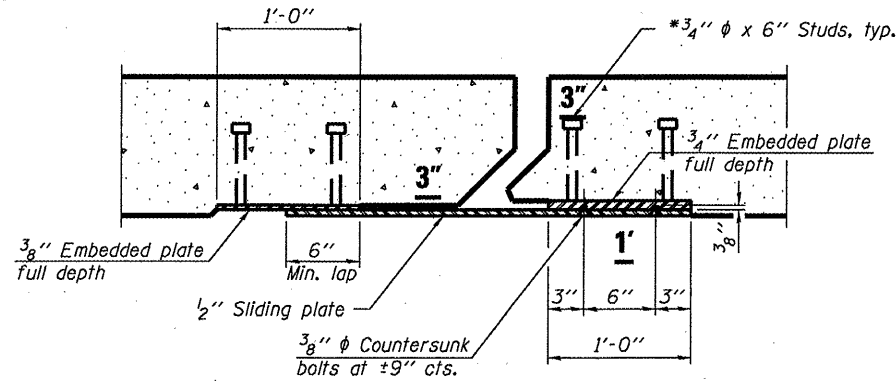
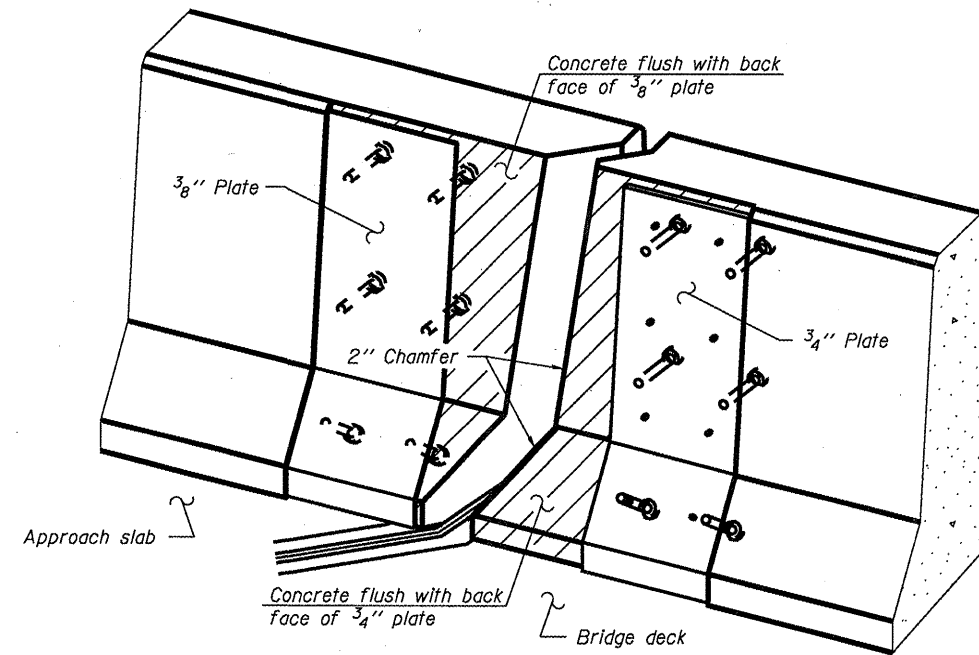


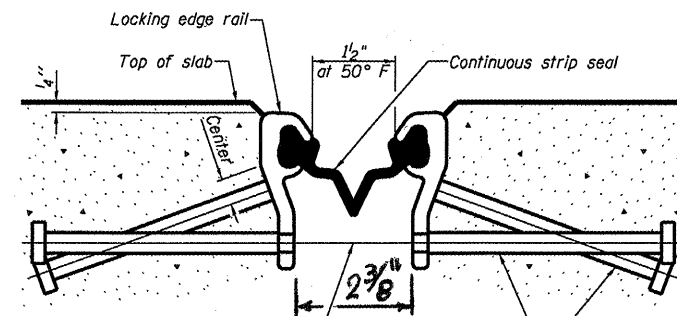
**PLAN**  
(For skews > 30°)  
Showing point block



**SECTION C-C**



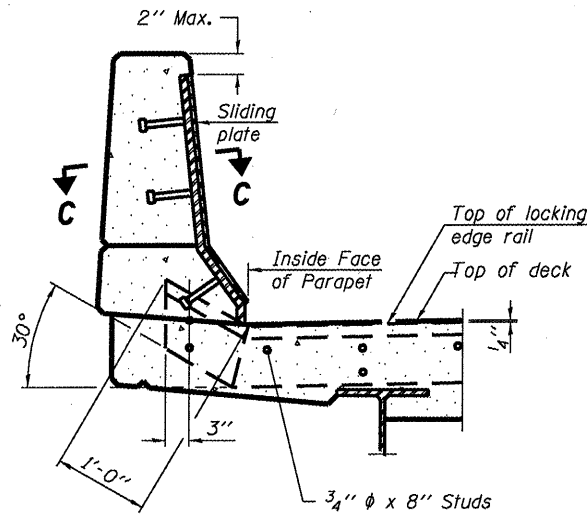
**TRIMETRIC VIEW**  
(Showing back plates only)



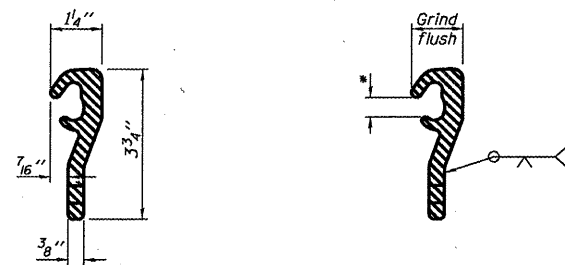
$\frac{7}{16}$ "  $\phi$  holes at 4'-0" cts. for  $\frac{3}{8}$ "  $\phi$  bolts. All bolts shall be burned, sawed, or chipped off flush with the plates after forms are removed, typ.

Place  $\frac{1}{2}$ "  $\phi$  x 6" granular or solid flux filled headed studs conforming to Article 1006.32 of the Std. Specs., automatically end welded at 1'-0" alt. cts.

**SECTION THRU STRIP SEAL JOINT FOR OVERLAY OVER DECK BEAMS**



**SECTION B-B**



**LOCKING EDGE RAIL**

**LOCKING EDGE RAIL SPLICE**

**Notes:**

The strip seal shall be made continuous and shall have a minimum thickness of  $\frac{1}{4}$ ". The configuration of the strip seal shall match the configuration of the Locking Edge Rails. Open or "webbed" strip seal gland configurations are not permitted. The gland shall be sized for a maximum rated movement of 4 inches.

The Locking Edge Rails depicted are conceptual only, except for the minimum dimensions shown. The actual configuration of the Locking Edge Rails and matching strip seal may vary from manufacturer to manufacturer. Flanged edge rails will not be allowed. Locking Edge Rails may be spliced at slope discontinuities.

The manufacturer's recommended installation methods shall be followed.

All steel components shall be galvanized after fabrication according to Article 520.03 of the Standard Specifications.

Maximum space between rail segments at stage lines shall be  $\frac{3}{16}$ ", sealed with a suitable sealant.

Parapet plates and anchorage studs for skews > 30° included in the cost of Preformed Joint Strip Seal.

**BILL OF MATERIAL**

ITEM	UNIT	TOTAL
PREFORMED JOINT STRIP SEAL	FOOT	86

FILE NAME =	USER NAME = woodshankr1
MAIN1-0366A29-details.dgn	
PLOT SCALE = 100.0000 / IN.	
PLOT DATE = Dec 20, 2010 - 07:18:10 AM	

DESIGNED - RLW	REVISED -
DRAWN - RLW	REVISED -
CHECKED -	REVISED -
DATE -	REVISED -

STATE OF ILLINOIS  
DEPARTMENT OF TRANSPORTATION

**PREFORMED JOINT STRIP SEAL DETAILS**

SCALE: SHEET NO. 5 OF 6 SHEETS STA. TO STA.

F.A.S. RTE. 2247	SECTION (13C-BR1)	COUNTY BUREAU	TOTAL SHEETS 14	SHEET NO. 13
CONTRACT NO. 66A29				
ILLINOIS FED. AID PROJECT				