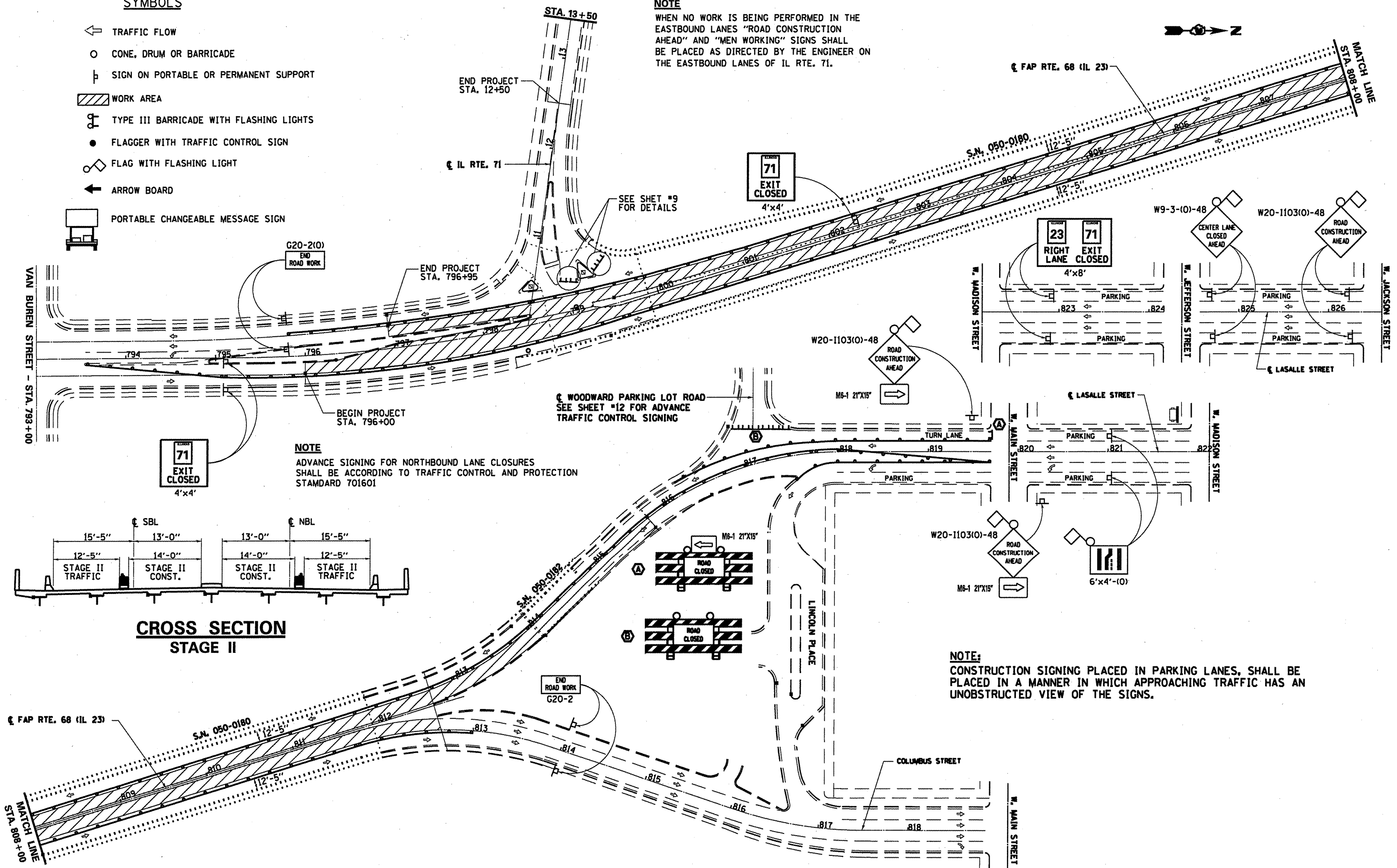


**SYMBOLS**

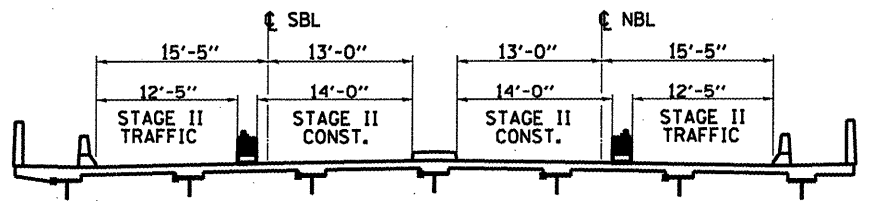
- ← TRAFFIC FLOW
- CONE, DRUM OR BARRICADE
- ⊥ SIGN ON PORTABLE OR PERMANENT SUPPORT
- ▨ WORK AREA
- ⊕ TYPE III BARRICADE WITH FLASHING LIGHTS
- FLAGGER WITH TRAFFIC CONTROL SIGN
- ◇ FLAG WITH FLASHING LIGHT
- ← ARROW BOARD
- ☐ PORTABLE CHANGEABLE MESSAGE SIGN

**NOTE**

WHEN NO WORK IS BEING PERFORMED IN THE EASTBOUND LANES "ROAD CONSTRUCTION AHEAD" AND "MEN WORKING" SIGNS SHALL BE PLACED AS DIRECTED BY THE ENGINEER ON THE EASTBOUND LANES OF IL RTE. 71.



**NOTE**  
ADVANCE SIGNING FOR NORTHBOUND LANE CLOSURES SHALL BE ACCORDING TO TRAFFIC CONTROL AND PROTECTION STANDARD 701601



**CROSS SECTION  
STAGE II**

**NOTE:**  
CONSTRUCTION SIGNING PLACED IN PARKING LANES, SHALL BE PLACED IN A MANNER IN WHICH APPROACHING TRAFFIC HAS AN UNOBSTRUCTED VIEW OF THE SIGNS.

FILE NAME	USER NAME = woodshankr1	DESIGNED - RON WOODSHANK	REVISED -	<b>STATE OF ILLINOIS DEPARTMENT OF TRANSPORTATION</b>	<b>TRAFFIC CONTROL AND PROTECTION (STAGE II)</b>	F.A.P. RTE.	SECTION	COUNTY	TOTAL SHEETS	SHEET NO.	
at:\pw_work\ps\dtd\woodshankr1\d0143143\MAIN11-0366A56-detailed.dgn	MAIN11-0366A56-detailed.dgn	DRAWN - RON WOODSHANK	REVISED -			68	(IZRI-2)	LASALLE	23	11	
PLOT SCALE = 1/8" = 1'-0"	IN.	CHECKED -	REVISED -			CONTRACT NO. 66A56					
PLOT DATE = Dec 28, 2010 - 12:42:46 PM		DATE -	REVISED -			ILLINOIS FED. AID PROJECT					