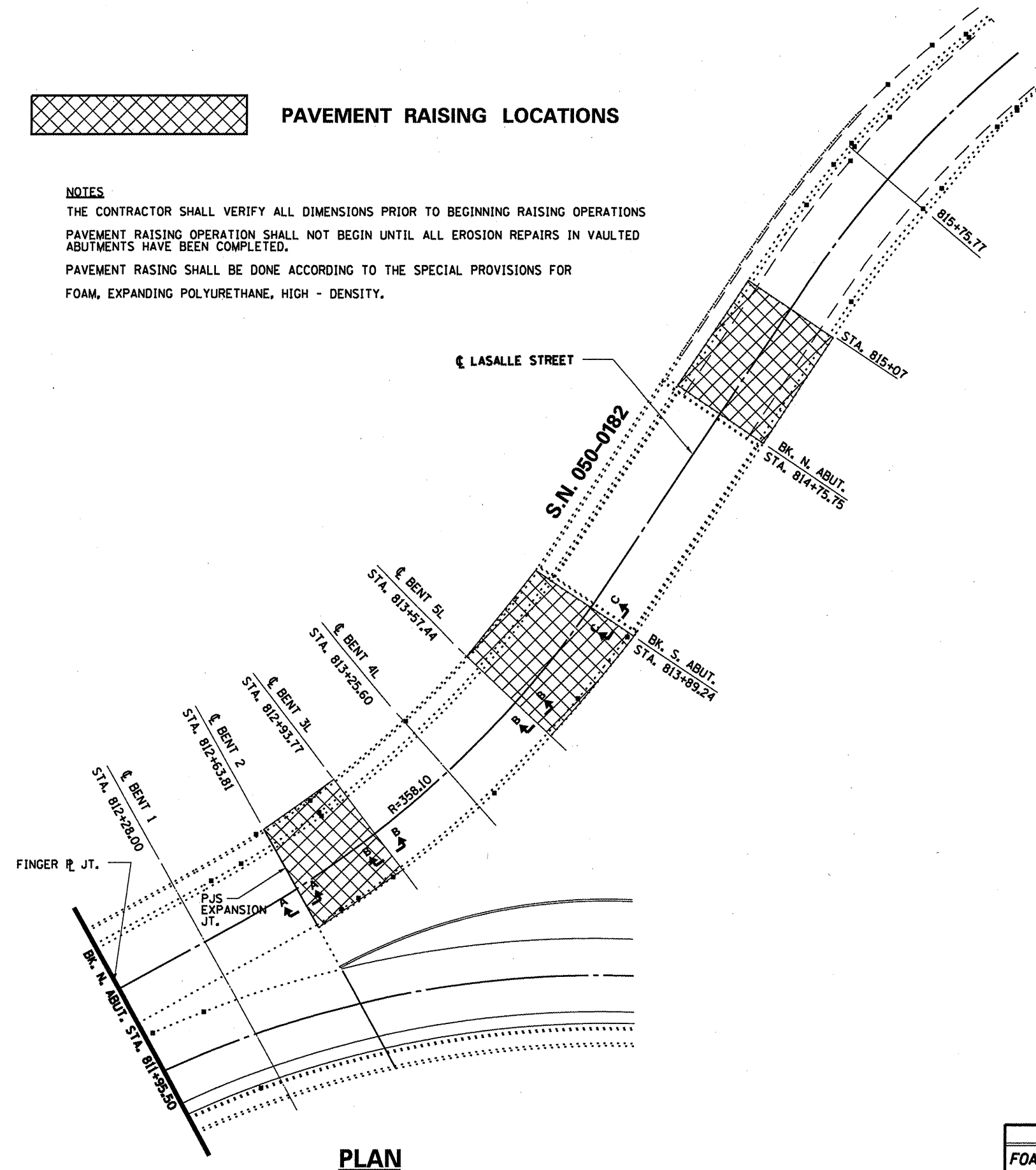




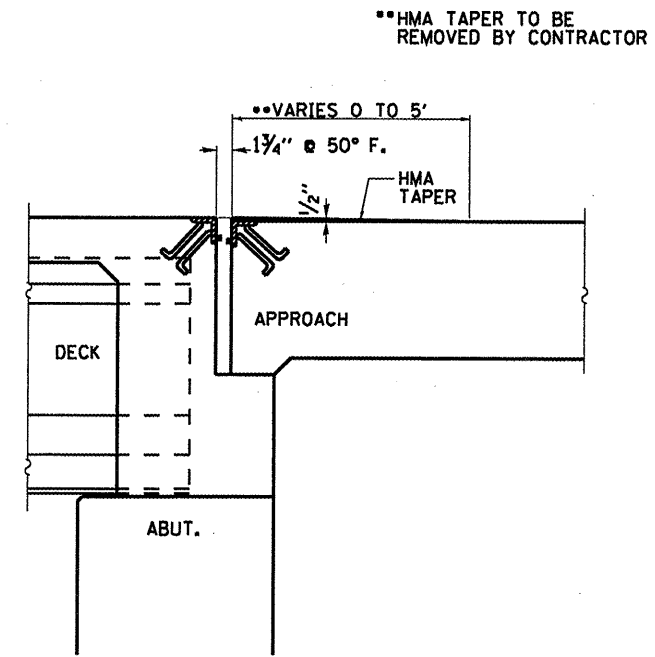
PAVEMENT RAISING LOCATIONS

NOTES

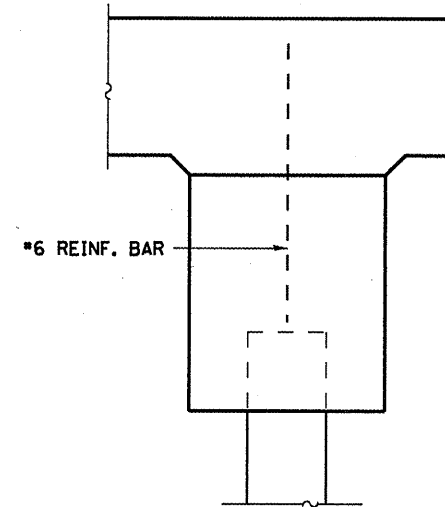
THE CONTRACTOR SHALL VERIFY ALL DIMENSIONS PRIOR TO BEGINNING RAISING OPERATIONS
 PAVEMENT RAISING OPERATION SHALL NOT BEGIN UNTIL ALL EROSION REPAIRS IN VAULTED ABUTMENTS HAVE BEEN COMPLETED.
 PAVEMENT RASING SHALL BE DONE ACCORDING TO THE SPECIAL PROVISIONS FOR FOAM, EXPANDING POLYURETHANE, HIGH - DENSITY.



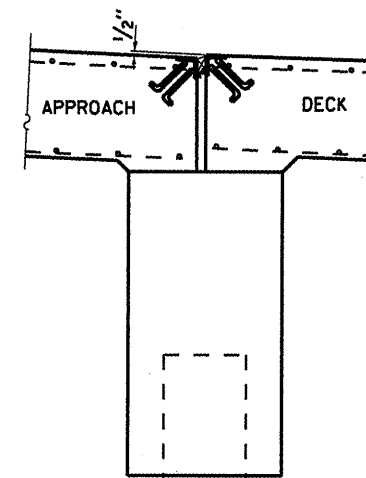
PLAN



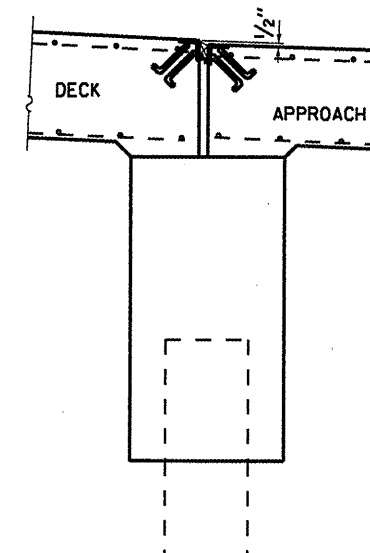
SECTION A-A
BENT 2



SECTION B-B
BENT 3L, 4L, 5L



SECTION C-C
SOUTH ABUTMENT



BILL OF MATERIAL

ITEM	UNIT	TOTAL
FOAM, EXPANDING PLOYURETHANE, HIGH - DENSITY	POUND	2022

EROSION REPAIR AT VAULTED ABUTS.

SN 050-0180
 FAP ROUTE 68 (IL 23)
 OVER ILLINOIS RIVER
 SECTION (1ZR)1-2
 LASALLE COUNTY
 STA. 805+45

FILE NAME =	USER NAME = woodshankr1	DESIGNED - RON WOODSHANK	REVISED -
ct:\pw_work\p1dot\woodshankr1\00143143\MAIN11-0366A56-de.tex1a.dgn		DRAWN - RON WOODSHANK	REVISED -
		CHECKED -	REVISED -
		DATE -	REVISED -

STATE OF ILLINOIS
 DEPARTMENT OF TRANSPORTATION

PAVEMENT RAISING
 SCALE: SHEET NO. 5 OF 10 SHEETS STA. TO STA.

F.A.P. RTE. 68	SECTION (1ZR)1-2	COUNTY LASALLE	TOTAL SHEETS 23	SHEET NO. 18
CONTRACT NO. 66A56				ILLINOIS FED. AID PROJECT