

**INDEX OF SHEETS**

- 1. COVER SHEET
- 2. GENERAL NOTES
- 3 - 4. SUMMARY OF QUANTITIES
- 5. TYPICALS
- 6. SCHEDULES FOR PAVEMENT PATCHING
- 7. DETOUR SIGNING (1 OF 2)
- 8. WIDTH RESTRICTION SIGNING
- 9. **DETOUR SIGNING (2 OF 2)**
- 10. TRAFFIC CONTROL FOR STAGE I CONSTRUCTION
- 11. TRAFFIC CONTROL FOR STAGE II CONSTRUCTION
- 12. TRAFFIC CONTROL FOR WOODWARD PARKING LOT ROAD
- 13. DETECTOR LOOPS
- 14. GENERAL PLAN AND ELEVATION - S.N. 050-0180
- 15. APPROACH SLAB REPAIR
- 16 - 17. DECK SLAB REPAIR
- 18. PAVEMENT RAISING
- 19. EROSION REPAIRS - VULTED ABUTMENTS
- 20. CONCRETE REPAIRS
- 21. LIGHT SUPPORT PEDESTAL REPAIR
- 22. EXPANSION JOINT TROUGH
- 23. STORM SEWER REPAIR

**STANDARDS**

- 000001-06 STANDARD SYMBOLS, ABBREVIATIONS AND PATTERNS
- 001001-02 AREAS OF REINFORCEMENT BARS
- 001006 DECIMAL OF AN INCH AND OF A FOOT
- 420001-07 PAVEMENT JOINTS
- 420701-02 PAVEMENT FABRIC
- 442101-07 CLASS B PATCHES
- 701001-02 OFF-ROAD OPERATIONS 2L, 2W, MORE THAN 15' (4.5 m) AWAY
- 701006-03 OFF-ROAD OPERATIONS 2L, 2W, 15' (4.5 m) TO 24" (600 mm) FROM PAVEMENT EDGE
- 701101-02 OFF-ROAD OPERATIONS MULTILANE, 15' (4.5 m) TO 24" (600 mm) FROM PAVEMENT EDGE
- 701106-02 OFF-ROAD OPERATIONS, MULTILANE, MORE THAN 15' (4.5 m) AWAY
- 701301-04 LANE CLOSURE, 2L, 2W, SHORT TIME OPERATIONS
- 701601-07 URBAN LANE CLOSURE, MULTILANE, 1W OR 2W WITH NONTRAVERSABLE MEDIUM
- 701901-01 TRAFFIC CONTROL DEVICES

**STATE OF ILLINOIS**  
**DEPARTMENT OF TRANSPORTATION**  
**DIVISION OF HIGHWAYS**

**PROPOSED**  
**HIGHWAY PLANS**

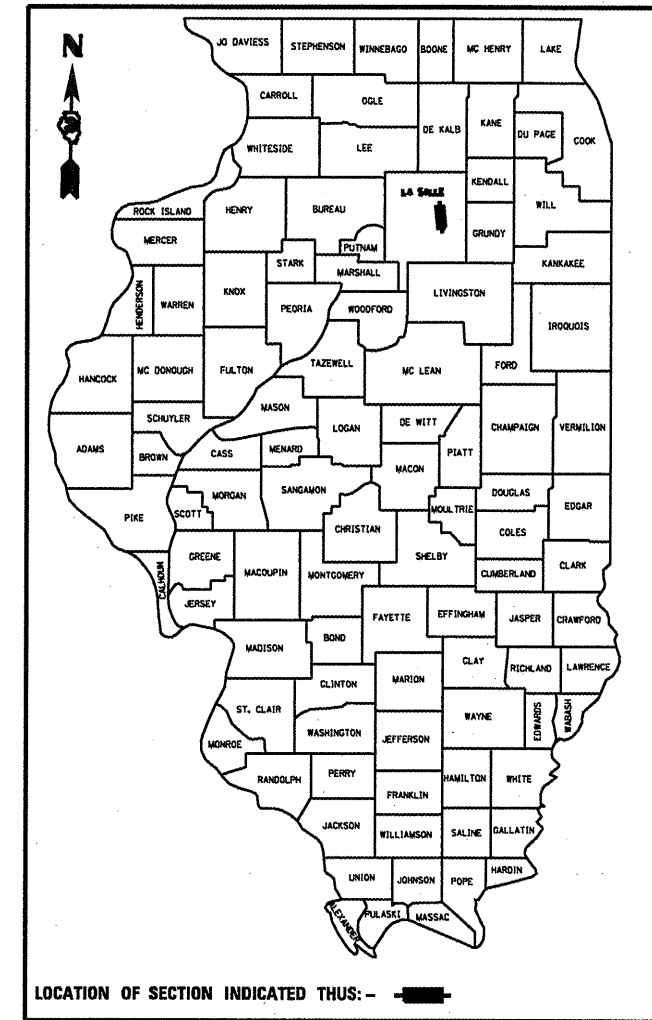
**FAP ROUTE 68 (IL 23)**  
**SECTION (1ZR)I-2**

**BRIDGE & APPROACH SLAB REPAIRS**  
**LASALLE COUNTY**

**C-93-057-10**

F.A.P. RTE.	SECTION	COUNTY	TOTAL SHEETS	SHEET NO.
68	(1ZR)I-2	LASALLE	23	1
ILLINOIS			CONTRACT NO. 66A56	

D-93-002-10



**FUNCTIONAL CLASSIFICATION**  
**OTHER PRINCIPAL ARTERIAL**

FAP RTE. 627 (IL 71)	FAP RTE. 68 (IL 23)
2009 ADT3700	2009 ADT24400
P.V. 93.51%	P.V. 94.98%
S.U. 5.41%	S.U. 3.48%
M.U. 1.08%	M.U. 1.54%

STATE OF ILLINOIS  
DEPARTMENT OF TRANSPORTATION  
DIVISION OF HIGHWAYS

SUBMITTED December 21, 2010

*Mary F. Ryan*  
DEPUTY DIRECTOR OF HIGHWAYS, REGION ENGINEER

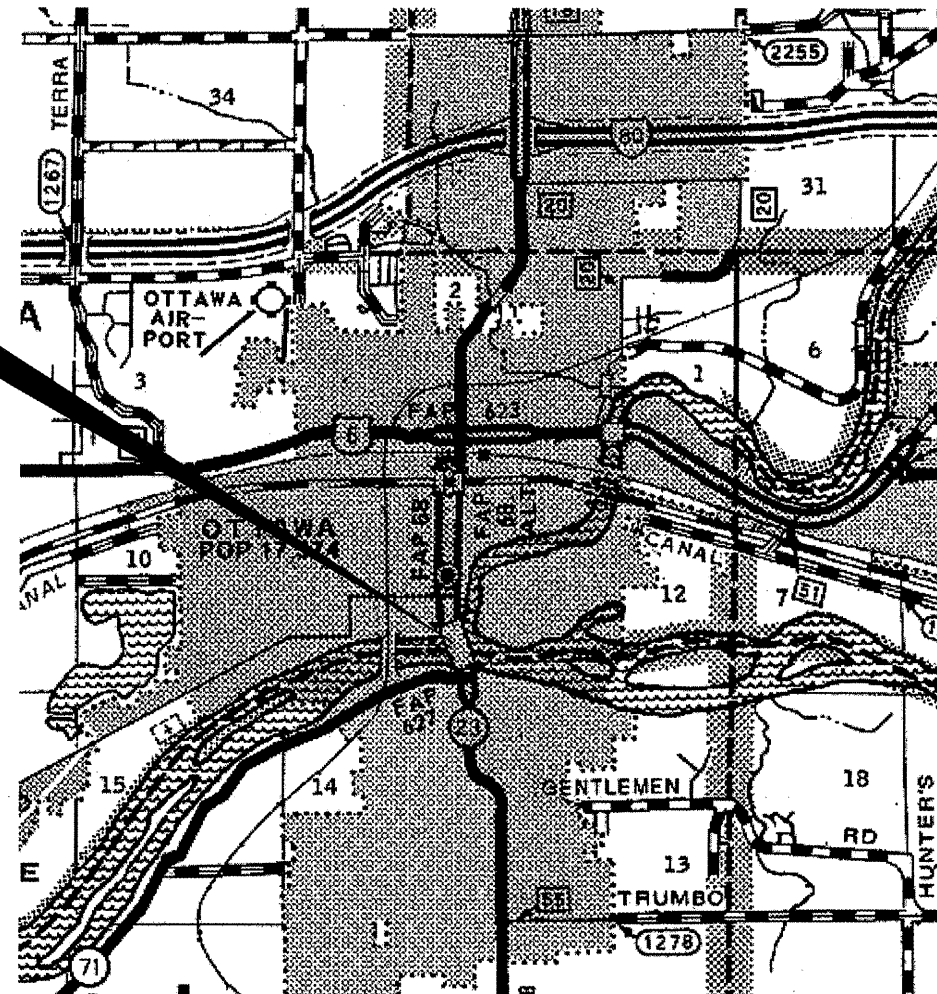
Feb 4 2011  
*Scott E. Stitt, P.E.*  
ENGINEER OF DESIGN AND ENVIRONMENT

Feb 4 2011  
*Christina M. Reed*  
DIRECTOR OF HIGHWAYS, CHIEF ENGINEER

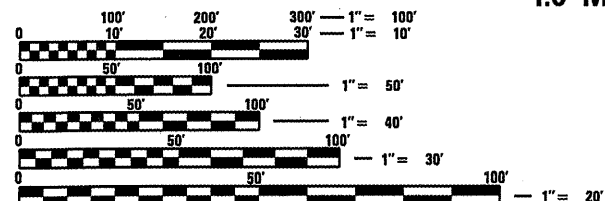
**PRINTED BY THE AUTHORITY**  
**OF THE STATE OF ILLINOIS**

Rev.

**BRIDGE LOCATION**  
SN 050-0180  
CARRIES FAP 68 (IL 23)  
OVER THE ILLINOIS RIVER  
1.0 MILE SOUTH OF US ROUTE 6



**LOCATION MAP**  
POINT LOCATION



FULL SIZE PLANS HAVE BEEN PREPARED USING STANDARD ENGINEERING SCALES. REDUCED SIZED PLANS WILL NOT CONFORM TO STANDARD SCALES. IN MAKING MEASUREMENTS ON REDUCED PLANS, THE ABOVE SCALES MAY BE USED.

J.U.L.I.E.  
JOINT UTILITY LOCATION INFORMATION FOR EXCAVATION  
1-800-892-0123  
OR 811

**PROJECT ENGINEER: JOE KANNEL**  
**UNIT CHIEF: RON WOODSHANK**  
**TOWNSHIP: OTTAWA, SOUTH OTTAWA**  
**CONTRACT NO. 66A56**

**GENERAL NOTES**

PLAN DIMENSIONS AND DETAILS RELATIVE TO EXISTING PLANS ARE SUBJECT TO NOMINAL CONSTRUCTION VARIATIONS. THE CONTRACTOR SHALL FIELD VERIFY EXISTING DIMENSIONS AND DETAILS AFFECTING NEW CONSTRUCTION AND MAKE NECESSARY APPROVED ADJUSTMENTS PRIOR TO CONSTRUCTION OR ORDERING OF MATERIALS. SUCH VARIATIONS SHALL NOT BE CAUSE FOR ADDITIONAL COMPENSATION FOR A CHANGE IN SCOPE OF WORK, HOWEVER, THE CONTRACTOR WILL BE PAID FOR THE QUANTITY ACTUALLY FURNISHED AT THE UNIT PRICE BID FOR THE WORK.

SILANE SURFACE SEALER SHALL BE APPLIED ACCORDING TO THE MANUFACTURER'S RECOMMENDATIONS TO THE AREAS DESIGNATED FOR "DECK SLAB REPAIRS".

THE EXISTING VAULTED ABUTMENTS OF THE STRUCTURE ARE CONSIDERED "CONFINED SPACES". THE CONTRACTOR SHALL TAKE APPROPRIATE PRECAUTIONS TO DEAL WITH CONFINED SPACES.

THE COST OF ANY SAW CUTS MADE TO COMPLETE THE WORK AS DESCRIBED IN PLAN DETAILS, UNLESS OTHERWISE NOTED SHALL NOT BE PAID FOR SEPARATELY BUT SHALL BE INCLUDED WITH THE VARIOUS PAY REMOVAL PAY ITEMS INVOLVED.

THE WORK REQUIRED TO CONNECT ANY SEWER TO AN EXISTING DRAINAGE STRUCTURE OR PIPE WILL NOT BE PAID FOR SEPARATELY, BUT SHALL BE CONSIDERED AS INCLUDED IN THE CONTRACT UNIT PRICE BID FOR THE SEWER ITEMS.

BEFORE ORDERING PIPE CULVERTS OR PIPE DRAINS, THE CONTRACTOR SHALL CONSULT THE ENGINEER FOR EXACT LENGTHS.

FOR STABILIZATION, ALL TYPE III BARRICADES SHALL REQUIRE A MINIMUM OF FOUR SAND BAGS PER BARRICADE.

ANY REFERENCE TO A STANDARD IN THESE PLANS SHALL BE INTERPRETED TO MEAN THE EDITION AS INDICATED BY THE SUBNUMBER SHOWN IN THE LIST OF STANDARDS OR THE COPY INCLUDED IN THESE PLANS.

THE FOLLOWING RATES OF APPLICATIONS HAVE BEEN USED IN CALCULATING PLAN QUANTITIES.

GRANULAR MATERIALS	2.05	TONS/CU YD
--------------------	------	------------

DATE: 12-21-10  
 PREPARED BY: Dave Brovick  
 DISTRICT STUDIES & PLANS ENGINEER  
 EXAMINED BY: Herbert Jung  
 DISTRICT CONSTRUCTION ENGINEER  
Ray J. Kelly  
 DISTRICT MATERIALS ENGINEER  
Samuel A. Weber  
 DISTRICT OPERATIONS ENGINEER

FILE NAME =	USER NAME = woodshankr1	DESIGNED - RON WOODSHANK	REVISED - -----	<b>STATE OF ILLINOIS DEPARTMENT OF TRANSPORTATION</b>	<b>GENERAL NOTES</b>	F.A.P. RTE.	SECTION	COUNTY	TOTAL SHEETS	SHEET NO.	
c:\pwork\pwork\woodshankr1\d8143143	MAIN1-D366A56-details.dgn	DRAWN - RON WOODSHANK	REVISED - -----			68	(IZRI)-2	LASALLE	23	2	
PLOT SCALE = 100.0000 ' / IN.	CHECKED - ----	REVISOR - -----	REVISOR - -----			CONTRACT NO. 66A56		ILLINOIS FED. AID PROJECT			
PLOT DATE = Dec 20, 2010 - 12:40:30 PM	DATE - -----	REVISOR - -----	REVISOR - -----			SCALE: 50	SHEET NO. 1 OF 1 SHEETS	STA. ----- TO STA. -----			

CODE NO.	ITEM	UNIT	TOTAL QUANTITY	CONSTRUCTION CODE	
				STATE FUNDS	
				100% STATE ROADWAY	100% STATE STRUCTURE
				PPS #0-01717-3018	PPS #0-01717-3012
				0005 URBAN	0014 URBAN
44200956	CLASS B PATCHES, TYPE II, 9 INCH	SQ YD	367	367	
44200962	CLASS B PATCHES, TYPE III, 9 INCH	SQ YD	89	89	
44200964	CLASS B PATCHES, TYPE IV, 9 INCH	SQ YD	101	101	
44213100	PAVEMENT FABRIC	SQ YD	103	103	
44213200	SAW CUTS	FOOT	3222	3222	
50102400	CONCRETE REMOVAL	CU YD	0.2		0.2
50300255	CONCRETE SUPERSTRUCTURE	CU YD	0.2		0.2
51100100	SLOPE WALL 4 INCH	SQ YD	8		8
58700300	CONCRETE SEALER	SQ FT	6684		6684
59300100	CONTROLLED LOW-STRENGTH MATERIAL	CU YD	47		47
67100100	MOBILIZATION	L SUM	1	0.25	0.75
70103815	TRAFFIC CONTROL SURVEILLANCE	CAL DA	27	5	22
* 81012800	CONDUIT IN TRENCH, 3" DIA., PVC	FOOT	38	38	
* 81013000	CONDUIT IN TRENCH, 4" DIA., PVC	FOOT	68	68	
* 81900200	TRENCH AND BACKFILL FOR ELECTRICAL WORK	FOOT	350	350	
* 87301305	ELECTRIC CABLE IN CONDUIT, LEAD-IN, NO. 14 1 PAIR	FOOT	655	655	
* 87900100	DRILL EXISTING FOUNDATION	EACH	1	1	
* 87900200	DRILL EXISTING HANDHOLE	EACH	8	8	
* 88500100	INDUCTION LOOP DETECTOR	EACH	6	6	
* 88600100	DETECTOR LOOP, TYPE I	FOOT	521	521	
50104650	SLOPE WALL REMOVAL	SQ YD	8		8
* 89502210	MODIFY EXISTING CONTROLLER CABINET	EACH	1	1	

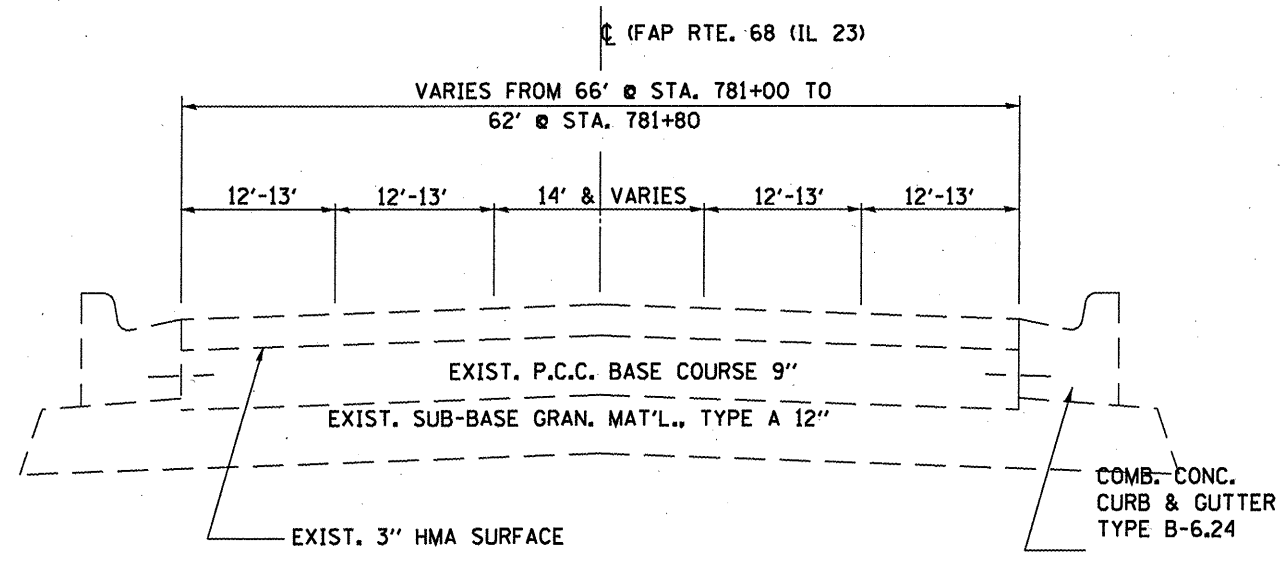
\*SPECIALITY ITEM

FILE NAME =	USER NAME = woodshankr1	DESIGNED - RON WOODSHANK	REVISED - -----	<b>STATE OF ILLINOIS DEPARTMENT OF TRANSPORTATION</b>	<b>SUMMARY OF QUANTITIES</b>	F.A.P. RTE.	SECTION	COUNTY	TOTAL SHEETS	SHEET NO.
es:\pw\work\pwidot\woodshankr1\d0143143\MAIN1-0366A56-details.dgn	DRAWN - RON WOODSHANK	REVISED - -----	68			(12R)-2	LASALLE	23	3	
PLOT SCALE = 100.0000' / IN.	CHECKED - -----	REVISED - -----	CONTRACT NO. 66A56							
PLOT DATE = Dec 21, 2010 - 12:47:02 PM	DATE - -----	REVISED - -----	ILLINOIS FED. AID PROJECT							
				SCALE: ----- SHEET NO. 1 OF 2 SHEETS STA. ----- TO STA. -----		<i>Rev.</i>				

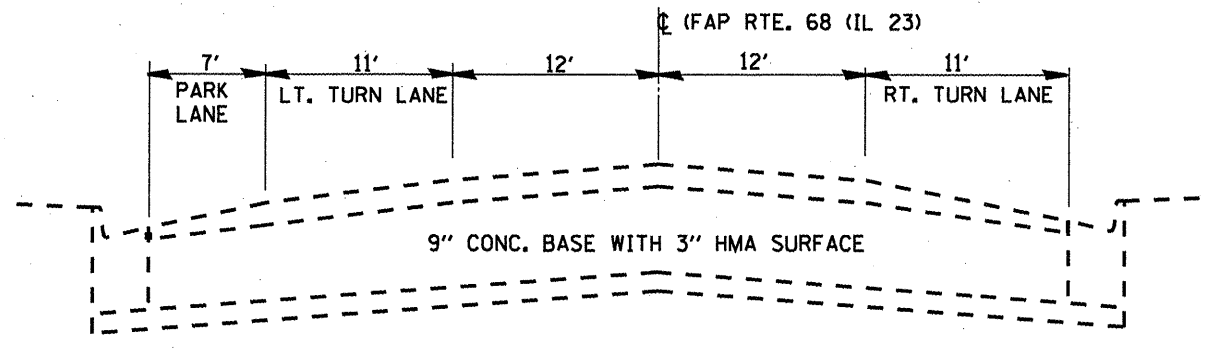
CODE NO.	ITEM	UNIT	TOTAL QUANTITY	CONSTRUCTION CODE	
				STATE FUNDS	
				100% STATE ROADWAY	100% STATE STRUCTURE
				PPS #0-01717-3018 0005 URBAN	PPS #0-01717-3012 0014 URBAN
* 89502300	REMOVE ELECTRIC CABLE FROM CONDUIT	FOOT	192	192	
X0325366	STORM SEWER REPAIR	FOOT	70	70	
X0326223	FOAM, EXPANDING POLYURETHANE, HIGH-DENSITY	POUND	2022	2022	
<del>X0326443</del>	<del>SALINE SURFACE SEALER</del>	<del>SQ YD</del>	<del>557</del>		<del>557</del>
X0326796	CLEAN TROUGH	EACH	2		2
X7010216	TRAFFIC CONTROL AND PROTECTION, (SPECIAL)	L SUM	1	0.25	0.75
X7015005	CHANGEABLE MESSAGE SIGN	CAL DA	22	11	11
X7200201	WIDTH RESTRICTION SIGNING	L SUM	1	0.5	0.5
* X7800610	URETHANE PAVEMENT MARKING - LINE 4"	FOOT	591	393	198
* X7800630	URETHANE PAVEMENT MARKING - LINE 6"	FOOT	648	283	365
* X7800640	URETHANE PAVEMENT MARKING - LINE 8"	FOOT	67	67	
* X7830074	GROOVING FOR RECESSED PAVEMENT MARKING 7"	FOOT	648	283	365
* X7830076	GROOVING FOR RECESSED PAVEMENT MARKING 9"	FOOT	67	67	
Z0000120	ABUTMENT DRAINS	EACH	2		2
Z0012754	STRUCTURAL REPAIR OF CONCRETE (DEPTH EQUAL TO OR LESS THAN 5 INCHES)	SQ FT	2		2
Z0001700	APPROACH SLAB REPAIR (FULL DEPTH)	SQ YD	160	160	
Z0016200	DECK SLAB REPAIR (PARTIAL)	SQ YD	649		649
Z0016702	DETOUR SIGNING	L SUM	1	1	
44201299	DOWEL BARS 1 1/2"	EACH	1117	1117	
* 86500040	OPTIMIZE TRAFFIC SIGNAL SYSTEM	EACH	1	1	
Z0041700	PLUG EXISTING STORM SEWERS	EACH	1		1
<del>* 3002219</del>	<del>TRAFFIC CONTROL FOR ROAD CLOSURE</del>	<del>L SUM</del>	<del>1</del>	<del>0.5</del>	<del>0.5</del>
Z0026346	NIGHTTIME WORK ZONE LIGHTING	L SUM	1		1

\*SPECIALITY ITEM

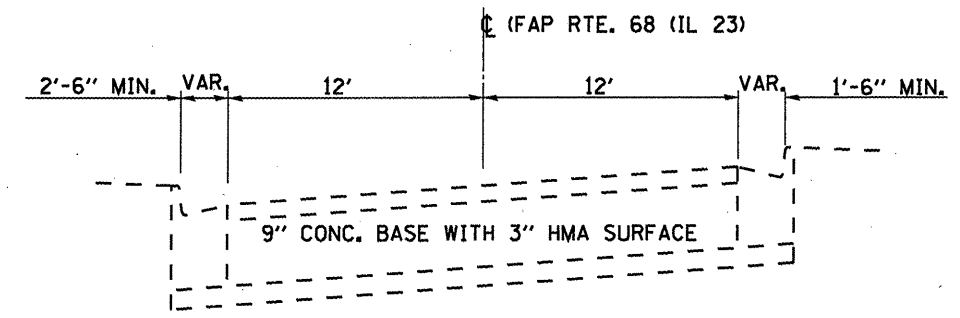
Rev



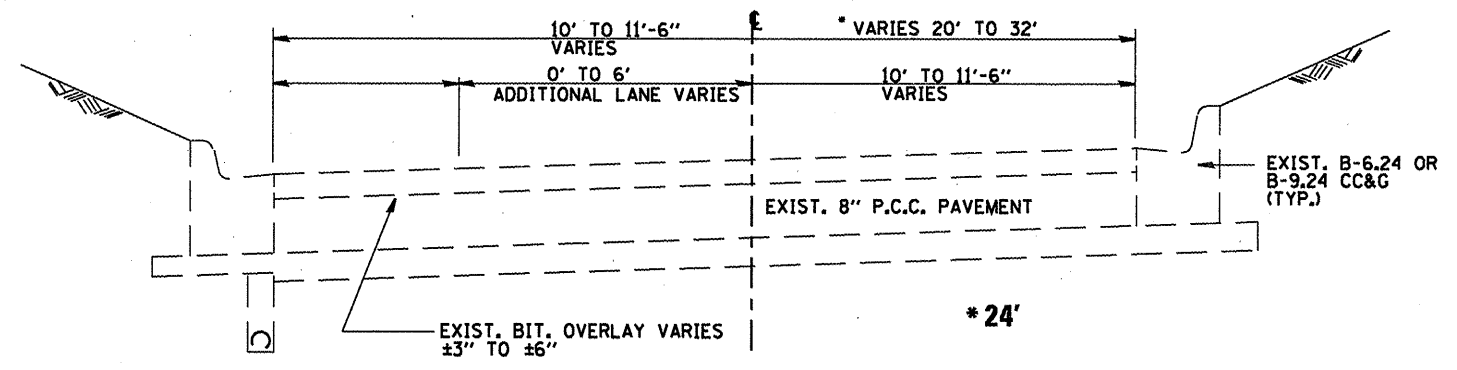
**EXISTING TYPICAL SECTION - IL ROUTE 23**  
**SOUTH OF RIVER**  
 STA. 793+00 TO 798+00



**EXISTING TYPICAL SECTION - IL ROUTE 23**  
**NORTH OF RIVER**  
 LINCOLN PLACE TO MAIN ST.  
 STA. 816+84.60 TO STA. 817+50.66 (COLUMBUS ST.)  
 STA. 817+63.57 TO STA. 817+98.32 (LASALLE ST.)



**EXISTING TYPICAL SECTION - IL ROUTE 23**  
**NORTH OF RIVER**  
 BRIDGE ABUT. TO LINCOLN PLACE  
 STA. 811+95.50 TO STA. 816+84.60 (COLUMBUS ST.)  
 STA. 811+95.50 TO STA. 817+63.57 (LASALLE ST.)



**EXISTING TYPICAL SECTION - IL ROUTE 71**

**PATCHING SCHEDULE - IL 23 NORTHBOUND LANES**

LOCATION	LEFT TURN LANE						PASSING LANE						DRIVING LANE					
	CLASS B PATCHING			DOWEL BARS	SAW CUTS	PAVE'T FABRIC	CLASS B PATCHING			DOWEL BARS	SAW CUTS	PAVE'T FABRIC	CLASS B PATCHING			DOWEL BARS	SAW CUTS	PAVE'T FABRIC
	TYPE II	TYPE III	TYPE IV				TYPE II	TYPE III	TYPE IV				TYPE II	TYPE III	TYPE IV			
STATION	SO YD	SO YD	SO YD	EACH	FOOT	SO YD	SO YD	SO YD	EACH	FOOT	SO YD	SO YD	SO YD	EACH	FOOT	SO YD		
796+95																		
797+14	8			20	54				20	54				11				
797+30	8			20	54				20	54				12			20	
797+58	8			20	54				20	54				8			20	
797+72	8			20	54				20	54				8			20	
797+86	8			20	54				20	54				8			20	
798+11	8			20	54				20	54				8			20	
798+27		21		20	84	21			20	63				12			20	
798+41														11			20	
798+60	8			20	54				20	54				8			20	
<b>NB TOTALS</b>	<b>56</b>	<b>21</b>		<b>160</b>	<b>462</b>	<b>21</b>			<b>80</b>	<b>504</b>				<b>85</b>			<b>180</b>	

**PATCHING SCHEDULE - IL 23 SOUTHBOUND LANES**

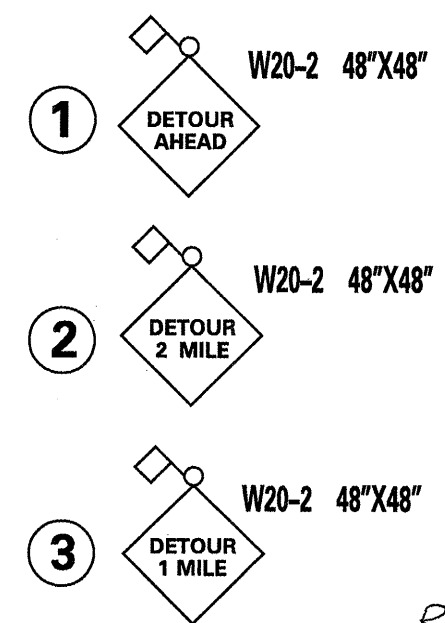
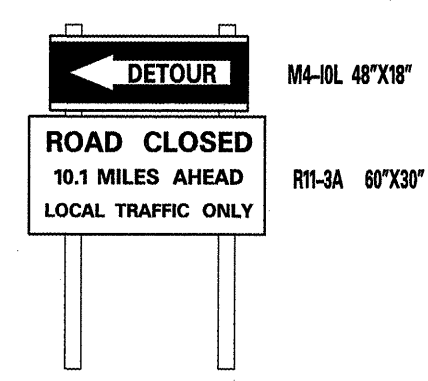
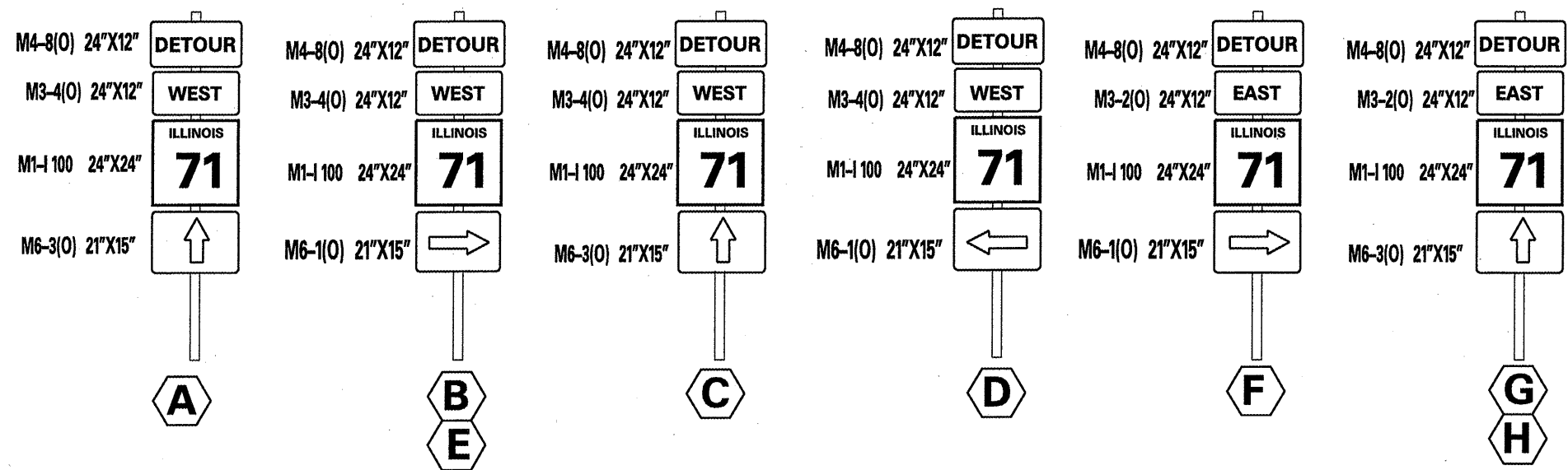
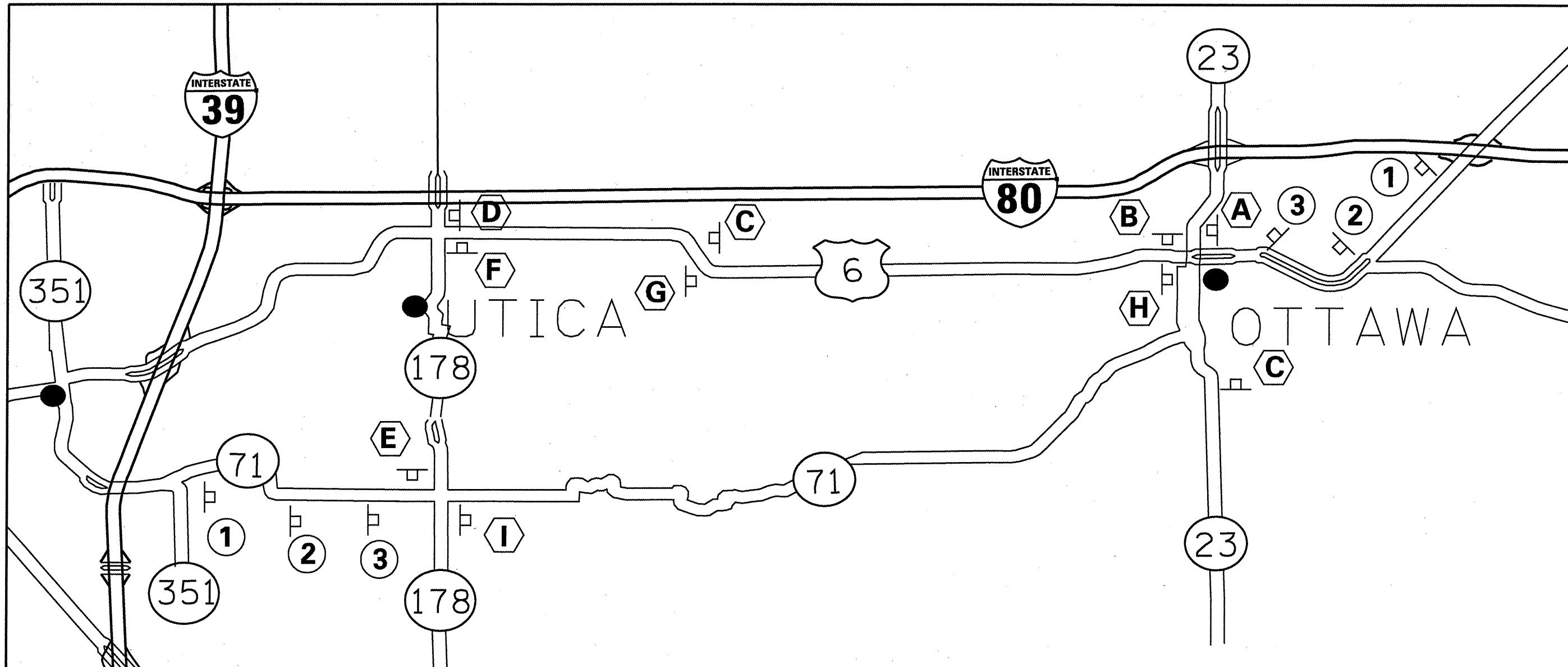
LOCATION	PASSING LANE						DRIVING LANE					
	CLASS B PATCHING			DOWEL BARS	SAW CUTS	PAVE'T FABRIC	CLASS B PATCHING			DOWEL BARS	SAW CUTS	PAVE'T FABRIC
	TYPE II	TYPE III	TYPE IV				TYPE II	TYPE III	TYPE IV			
STATION	SO YD	SO YD	SO YD	EACH	FOOT	SO YD	SO YD	SO YD	EACH	FOOT	SO YD	
797+08	8			20	54				20	54		
797+12				20					20	54		
797+30	8			20	54				20	54		
797+64	8			20	54				20	54		
797+79	8			20	54				20	54		
798+10		17		20	75			17	20	75		
798+23	8			20	54				20	54		
798+35	8			20	54				20	54		
798+62			34		105				20	54		
<b>SB TOTALS</b>	<b>48</b>	<b>17</b>	<b>34</b>	<b>160</b>	<b>504</b>			<b>56</b>	<b>17</b>	<b>453</b>		

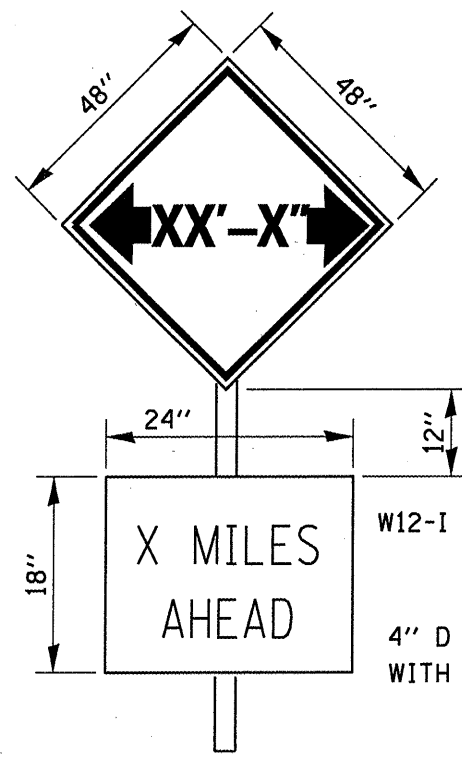
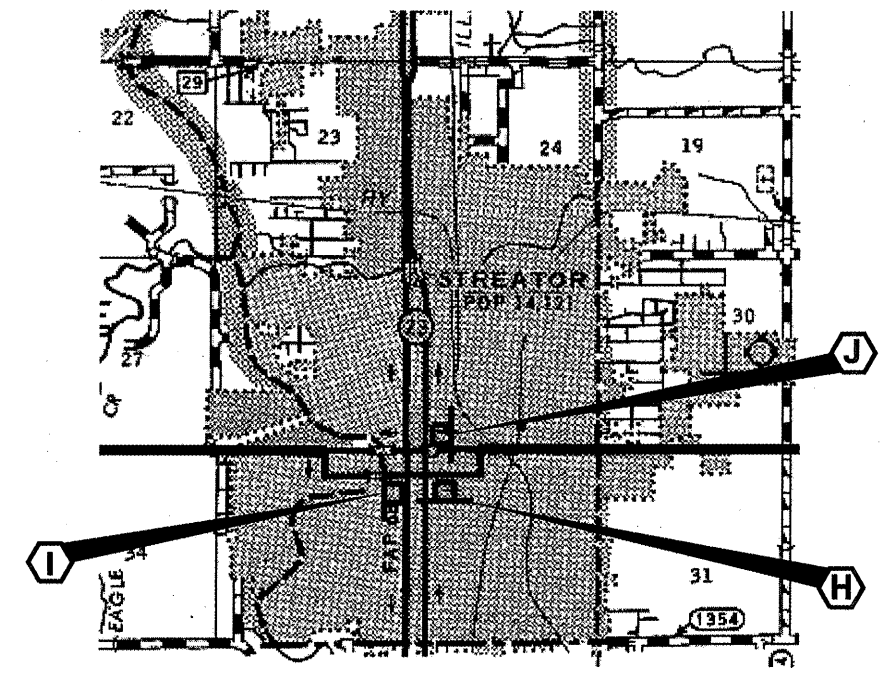
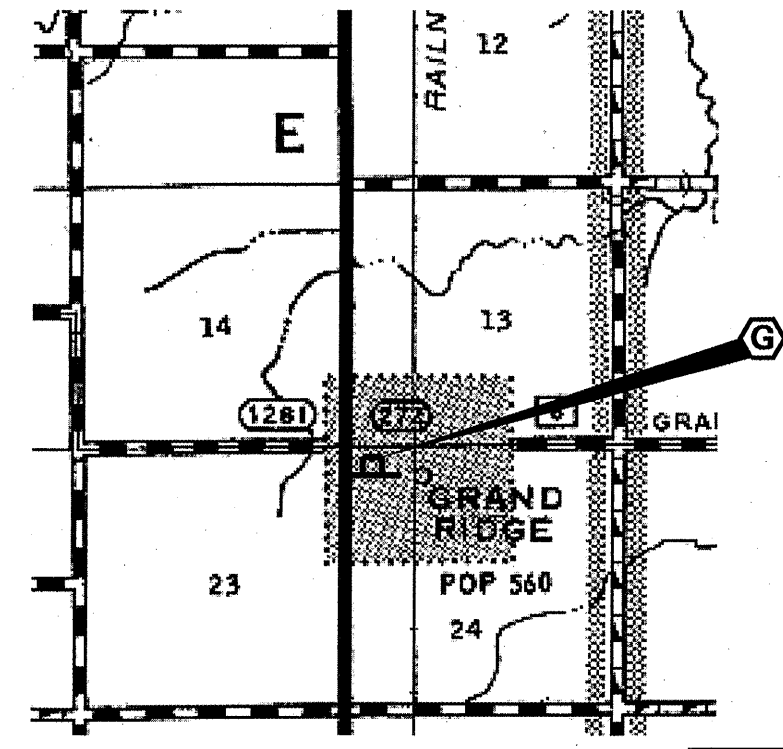
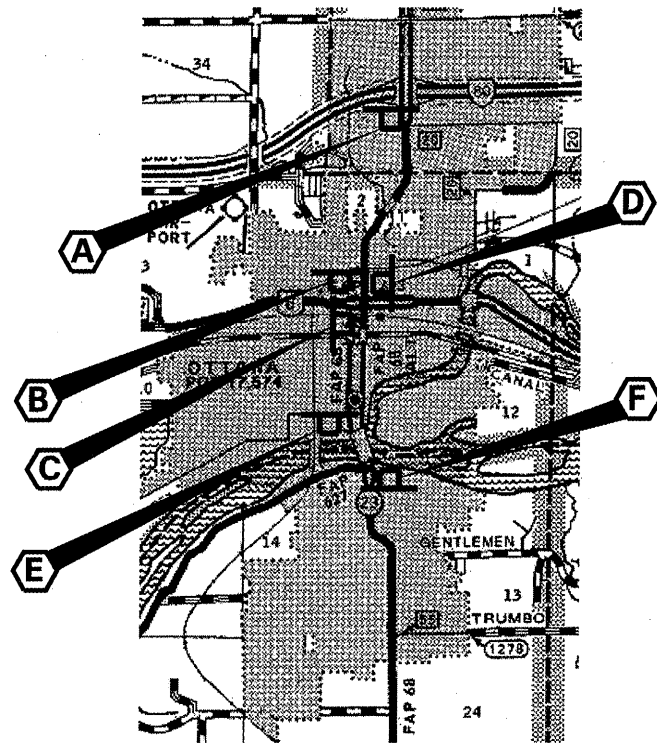
**PATCHING SCHEDULE - IL 71 EASTBOUND LANES**

LOCATION	PASSING LANE						DRIVING LANE					
	CLASS B PATCHING			DOWEL BARS	SAW CUTS	PAVE'T FABRIC	CLASS B PATCHING			DOWEL BARS	SAW CUTS	PAVE'T FABRIC
	TYPE II	TYPE III	TYPE IV				TYPE II	TYPE III	TYPE IV			
STATION	SO YD	SO YD	SO YD	EACH	FOOT	SO YD	SO YD	SO YD	EACH	FOOT	SO YD	
11+20									22	75	17	
11+69									22	57		
11+89									22	57		
12+17									23	59		
<b>EB TOTALS</b>								<b>27</b>	<b>17</b>	<b>248</b>	<b>17</b>	

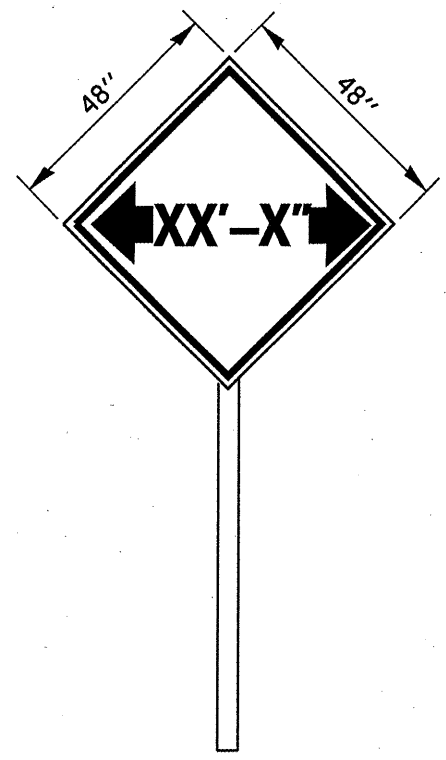
**PATCHING SCHEDULE - IL 71 WESTBOUND LANES**

LOCATION	PASSING LANE						DRIVING LANE					
	CLASS B PATCHING			DOWEL BARS	SAW CUTS	PAVE'T FABRIC	CLASS B PATCHING			DOWEL BARS	SAW CUTS	PAVE'T FABRIC
	TYPE II	TYPE III	TYPE IV				TYPE II	TYPE III	TYPE IV			
STATION	SO YD	SO YD	SO YD	EACH	FOOT	SO YD	SO YD	SO YD	EACH	FOOT	SO YD	
11+09								67	46	147	67	
11+26									27	77	17	
11+69									24	59		
11+87									23	67		
12+05									23	58		
12+12									22	69		
12+22									23	58		
<b>WB TOTALS</b>								<b>55</b>	<b>17</b>	<b>67</b>	<b>84</b>	





12" D BLACK LETTERING WITH ORANGE BACKGROUND



W12-I 101 (O)

4" D BLACK LETTERING WITH ORANGE BACKGROUND

TO BE POST MOUNTED AS SHOWN ELSEWHERE IN THE PLANS.

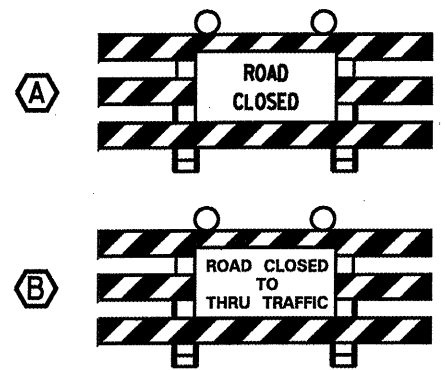
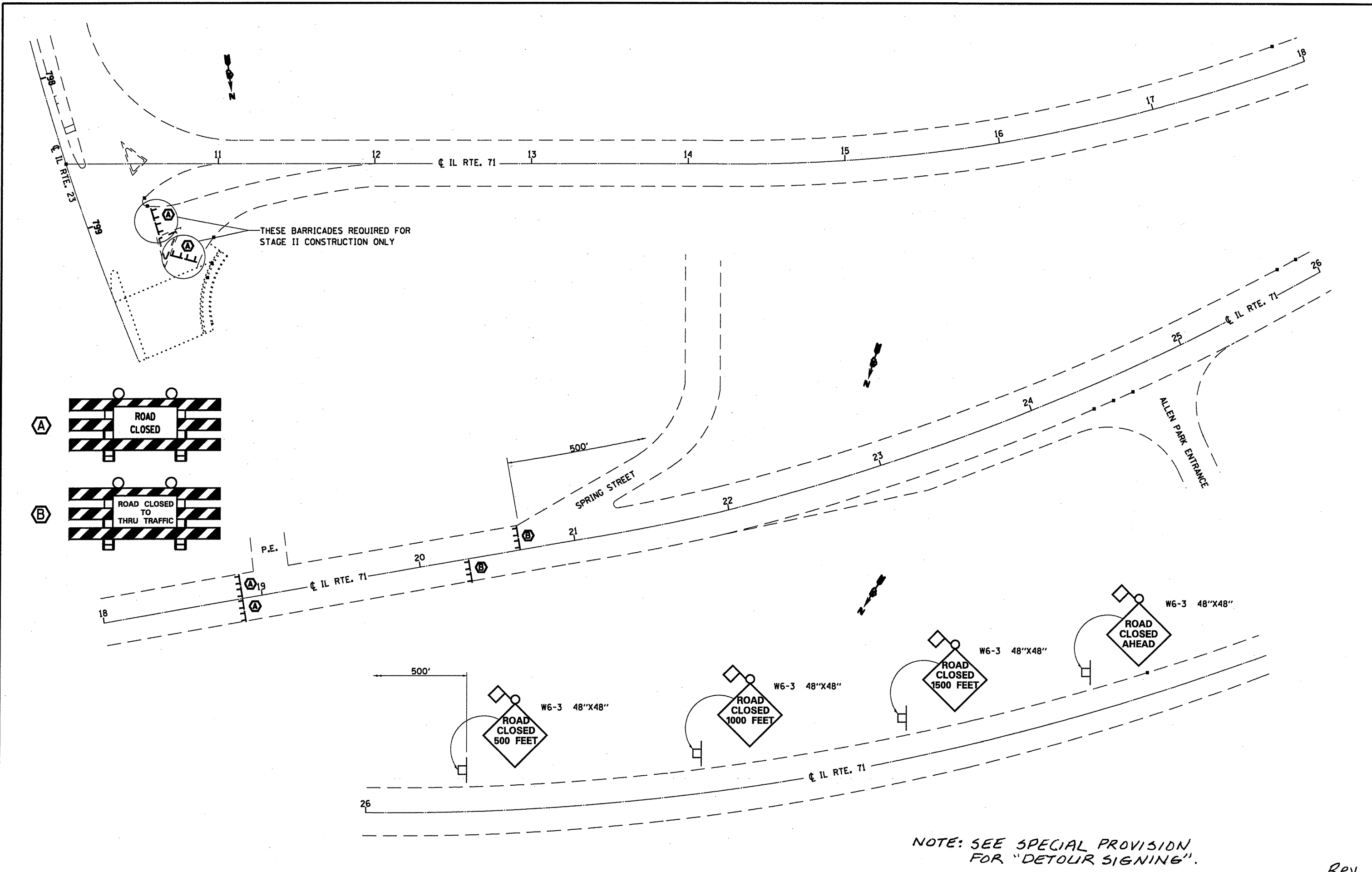
THE ENGINEER WILL NOTIFY DISTRICT 3 BUREAU OF OPERATIONS 14 CALENDAR DAYS PRIOR TO INSTALLING ANY TRAFFIC CONTROL DEVICES THAT WILL RESTRICT THE PAVEMENT WIDTH.

THE CONTRACTOR SHALL BE RESPONSIBLE FOR COORDINATING WITH THE ENGINEER TO MEET THIS REQUIREMENT.

COST OF SUPPLYING, INSTALLING, MAINTAINING AND REMOVING WIDTH RESTRICTION SIGNS SHALL BE INCLUDED IN THE COST OF THE TRAFFIC CONTROL AND PROTECTION PAY ITEMS.

WIDTH RESTRICTION SIGNING TABLE				
NO. OF SIGNS	TYPE OF SIGN	SIGN DESIGNATION	LOCATION	WIDTH RESTRICTION & DISTANCE
1	WIDTH RESTRICTION W12-I-101-(O) M6-3	A	ON IL 23 AT TOP OF I-80 EB OFF RAMP (FOR IL 23 SB TRAFFIC)	10'-6" 2.4 MILES
1	WIDTH RESTRICTION W12-I-101-(O) M6-3	B	ON IL 23 AT NW CORNER IL 23 & US 6 INTER. (FOR IL 23 SB TRAFFIC)	10'-6" 1.0 MILE
1	WIDTH RESTRICTION W12-I-101-(O) M6-1	C	ON US 6 AT SW CORNER IL 23 & US 6 INTER. (FOR US 6 EB TRAFFIC)	10'-6" 1.0 MILE
1	WIDTH RESTRICTION W12-I-101-(O) M6-1	D	ON US 6 AT NE CORNER IL 23 & US 6 INTER. (FOR US 6 WB TRAFFIC)	10'-6" 1.0 MILE
1	WIDTH RESTRICTION	E	ON IL 23 WITHIN TRAFFIC CONTROL AND PROTECTION (FOR IL 23 SB TRAFFIC)	10'-6"
1	WIDTH RESTRICTION	F	ON IL 23 WITHIN TRAFFIC CONTROL AND PROTECTION (FOR IL 23 NB TRAFFIC)	10'-6"
1	WIDTH RESTRICTION W12-I-101-(O) M6-3	G	ON IL 23 AT SE CORNER IL 23 & GRANDRIDGE RD. (FOR IL 23 NB TRAFFIC)	10'-6" 7.4 MILES
1	WIDTH RESTRICTION W12-I-101-(O) M6-3	H	ON IL 23 AT SE CORNER IL 23 & IL 18 INTER. (FOR IL 23 NB TRAFFIC)	10'-6" 15.4 MILES
1	WIDTH RESTRICTION W12-I-101-(O) M6-1	I	ON IL 18 AT SW CORNER IL 23 & IL 18 INTER. (FOR IL 18 EB TRAFFIC)	10'-6" 15.4 MILES
1	WIDTH RESTRICTION W12-I-101-(O) M6-1	J	ON IL 18 AT NE CORNER IL 23 & IL 18 INTER. (FOR IL 18 WB TRAFFIC)	10'-6" 15.4 MILES





NOTE: SEE SPECIAL PROVISION FOR "DETOUR SIGNING".

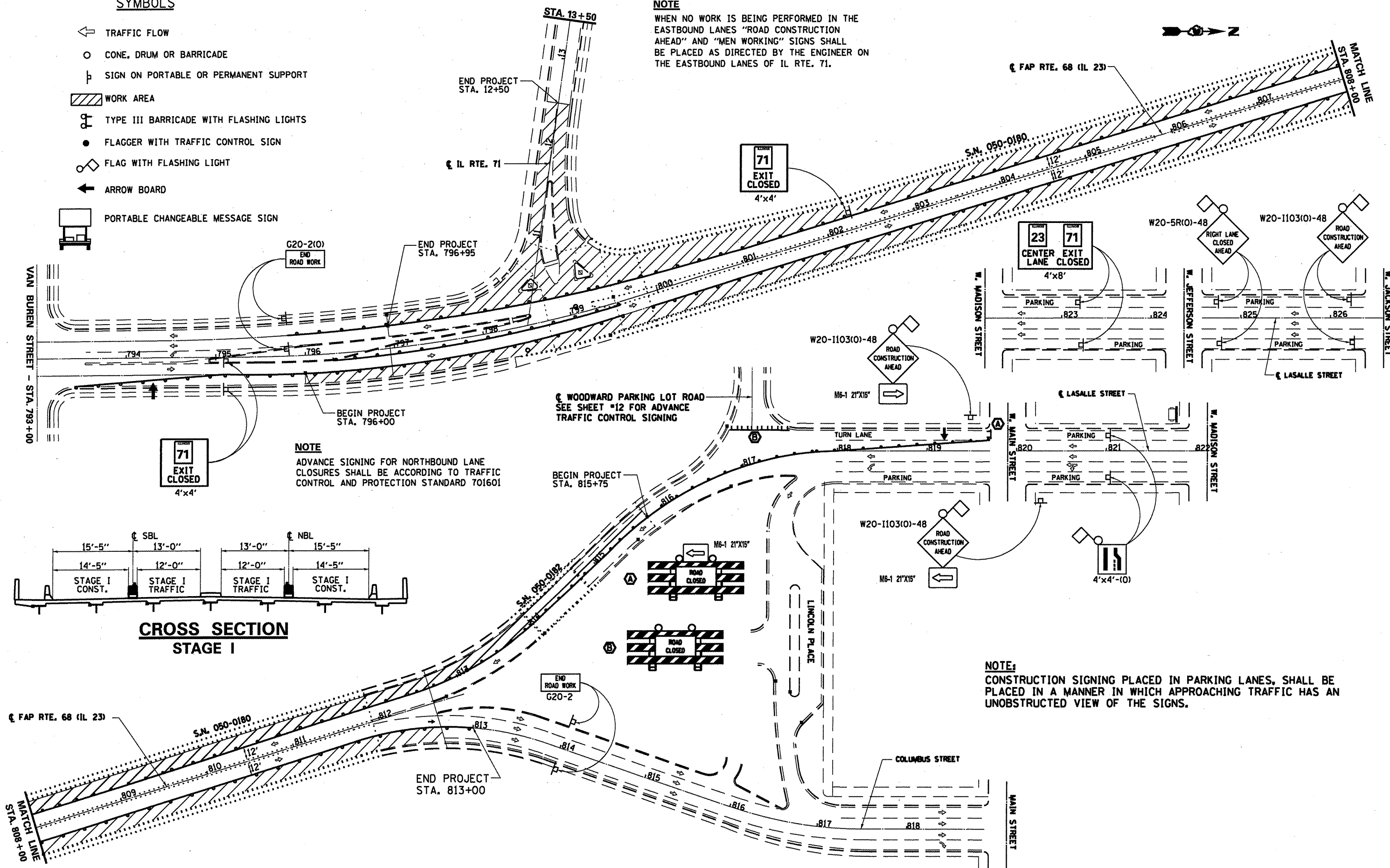
FILE NAME = c:\pwwork\pwwork\woodshankr1\d8143143	USER NAME = woodshankr1 MAIN11-0368A56-details.dgn	DESIGNED - RON WOODSHANK DRAWN - RON WOODSHANK	REVISED - REVISED - REVISED - REVISED -	<b>STATE OF ILLINOIS</b> <b>DEPARTMENT OF TRANSPORTATION</b>	<b>DETOUR SIGNING</b>	F.A.P. RTE. 68	SECTION (IZR)-2	COUNTY LASALLE	TOTAL SHEETS 23	SHEET NO. 9		
	PLOT SCALE = 1/8" = 100'-0"	CHECKED - DATE -	SCALE: _____			SHEET NO. 2 OF 2 SHEETS	STA. _____ TO STA. _____	CONTRACT NO. 66A56		ILLINOIS FED. AID PROJECT		
	PLOT DATE = Dec 28, 2010 - 12:42:11 PM	DATE -	<i>Rev.</i>									

**SYMBOLS**

- ← TRAFFIC FLOW
- CONE, DRUM OR BARRICADE
- ⊥ SIGN ON PORTABLE OR PERMANENT SUPPORT
- ▨ WORK AREA
- ⊕ TYPE III BARRICADE WITH FLASHING LIGHTS
- FLAGGER WITH TRAFFIC CONTROL SIGN
- ◇ FLAG WITH FLASHING LIGHT
- ← ARROW BOARD
- ☐ PORTABLE CHANGEABLE MESSAGE SIGN

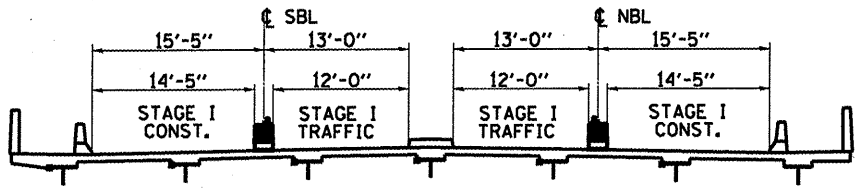
**NOTE**

WHEN NO WORK IS BEING PERFORMED IN THE EASTBOUND LANES "ROAD CONSTRUCTION AHEAD" AND "MEN WORKING" SIGNS SHALL BE PLACED AS DIRECTED BY THE ENGINEER ON THE EASTBOUND LANES OF IL RTE. 71.



**NOTE**  
ADVANCE SIGNING FOR NORTHBOUND LANE CLOSURES SHALL BE ACCORDING TO TRAFFIC CONTROL AND PROTECTION STANDARD 701601

**NOTE:**  
CONSTRUCTION SIGNING PLACED IN PARKING LANES, SHALL BE PLACED IN A MANNER IN WHICH APPROACHING TRAFFIC HAS AN UNOBSTRUCTED VIEW OF THE SIGNS.



**CROSS SECTION STAGE I**

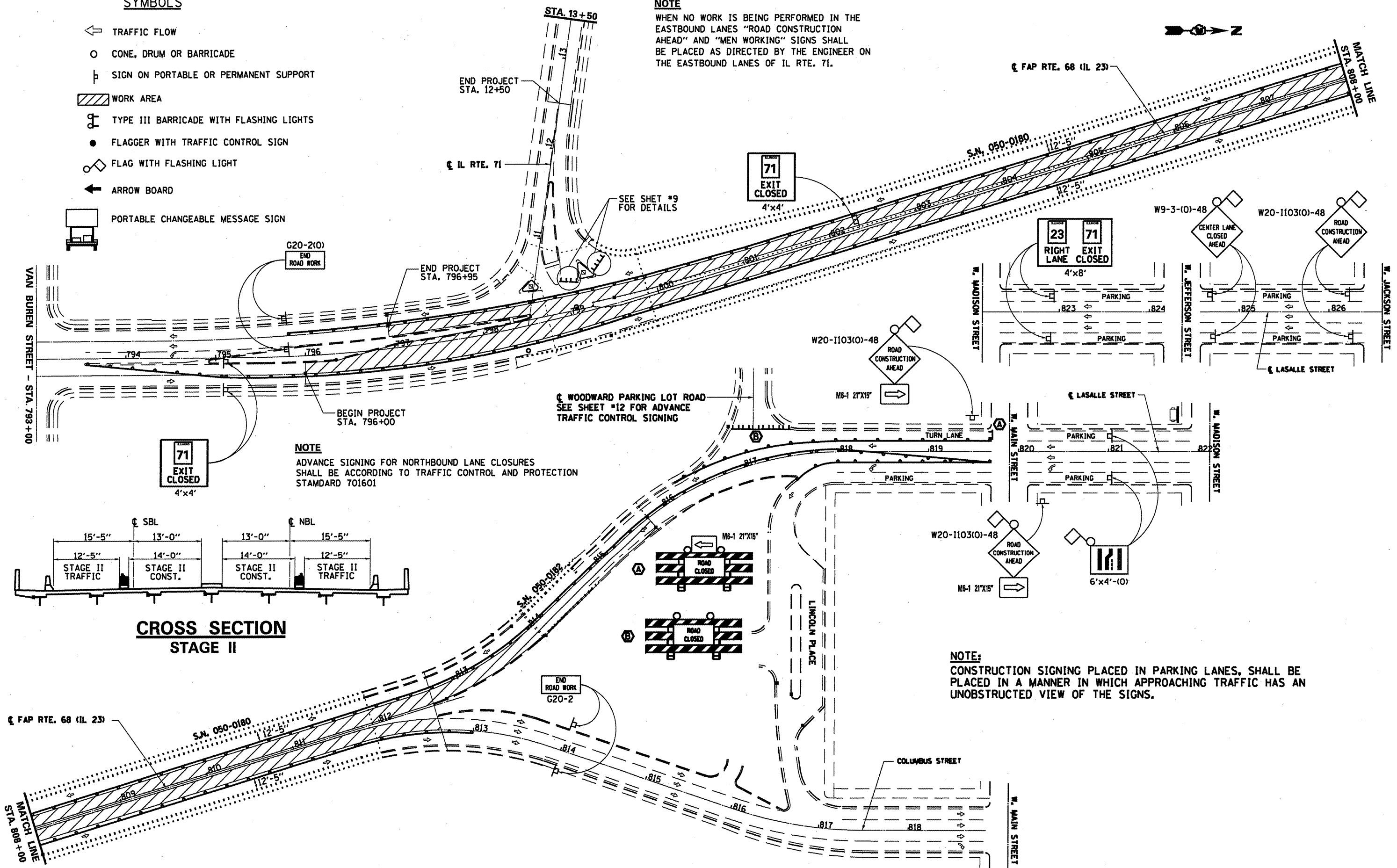
FILE NAME =	USER NAME = woodshankr-1	DESIGNED - RON WOODSHANK	REVISED -	<b>STATE OF ILLINOIS DEPARTMENT OF TRANSPORTATION</b>	<b>TRAFFIC CONTROL AND PROTECTION (STAGE I)</b>	F.A.P. RTE. 68	SECTION (12R)-2	COUNTY LASALLE	TOTAL SHEETS 23	SHEET NO. 10		
ea\pwwork\pwwidat\woodshankr-1\d0143143\MAIN11-0366A66-detai1.s.dgn	MAIN11-0366A66-detai1.s.dgn	DRAWN - RON WOODSHANK	REVISED -			SCALE: 1/8" = 1'-0"	SHEET NO. 1 OF 2 SHEETS	STA. _____	TO STA. _____	CONTRACT NO. 66A56		
PLOT SCALE = 1/8" = 1'-0"		CHECKED -	REVISED -			ILLINOIS FED. AID PROJECT						
PLOT DATE = Dec 26, 2010 - 12:42:28 PM		DATE -	REVISED -									

**SYMBOLS**

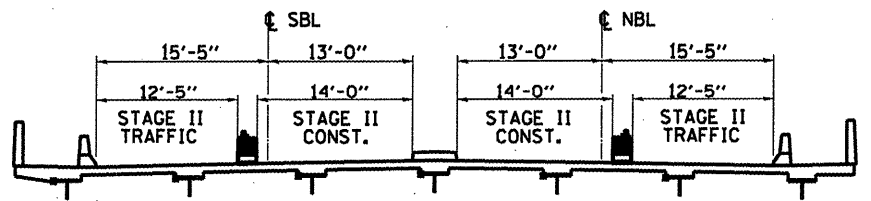
- ← TRAFFIC FLOW
- CONE, DRUM OR BARRICADE
- ⊥ SIGN ON PORTABLE OR PERMANENT SUPPORT
- ▨ WORK AREA
- ⊕ TYPE III BARRICADE WITH FLASHING LIGHTS
- FLAGGER WITH TRAFFIC CONTROL SIGN
- ◇ FLAG WITH FLASHING LIGHT
- ← ARROW BOARD
- ☐ PORTABLE CHANGEABLE MESSAGE SIGN

**NOTE**

WHEN NO WORK IS BEING PERFORMED IN THE EASTBOUND LANES "ROAD CONSTRUCTION AHEAD" AND "MEN WORKING" SIGNS SHALL BE PLACED AS DIRECTED BY THE ENGINEER ON THE EASTBOUND LANES OF IL RTE. 71.



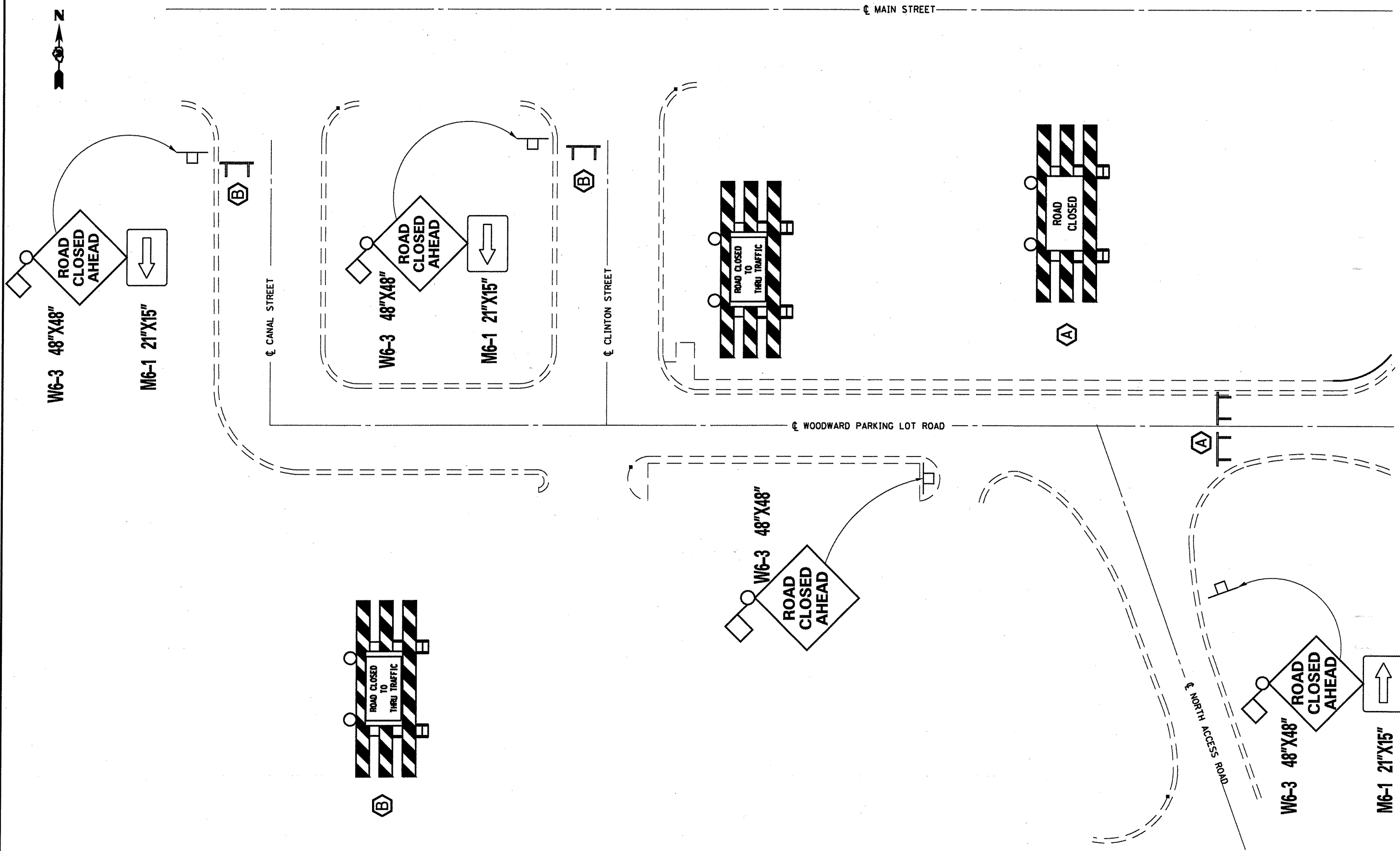
**NOTE**  
ADVANCE SIGNING FOR NORTHBOUND LANE CLOSURES SHALL BE ACCORDING TO TRAFFIC CONTROL AND PROTECTION STANDARD 701601



**CROSS SECTION  
STAGE II**

**NOTE:**  
CONSTRUCTION SIGNING PLACED IN PARKING LANES, SHALL BE PLACED IN A MANNER IN WHICH APPROACHING TRAFFIC HAS AN UNOBSTRUCTED VIEW OF THE SIGNS.

FILE NAME	USER NAME = woodshankr1	DESIGNED - RON WOODSHANK	REVISED -	<b>STATE OF ILLINOIS DEPARTMENT OF TRANSPORTATION</b>	<b>TRAFFIC CONTROL AND PROTECTION (STAGE II)</b>	F.A.P. RTE.	SECTION	COUNTY	TOTAL SHEETS	SHEET NO.	
atp\work\psd\dot\woodshankr1\d0143143\MAIN11-0366A56-details.dgn	DRAWN - RON WOODSHANK	REVISOR -	REVISOR -			68	(1ZR)-2	LASALLE	23	11	
PLOT SCALE = 1/8" = 1' IN.	CHECKED -	REVISOR -	REVISOR -			CONTRACT NO. 66A56					
PLOT DATE = Dec 28, 2010 - 12:42:46 PM	DATE -	REVISOR -	REVISOR -			ILLINOIS FED. AID PROJECT					



FILE NAME =  
 c:\pw\_work\pwidot\woodshankr1\d0143143\MAINI-0366A56-details.dgn

USER NAME = woodshankr1  
 MAINI-0366A56-details.dgn  
 PLOT SCALE = 100.0000' / IN.  
 PLOT DATE = Dec 26, 2010 - 12:43:03 PM

DESIGNED - RON WOODSHANK	REVISED -
DRAWN - RON WOODSHANK	REVISED -
CHECKED -	REVISED -
DATE -	REVISED -

STATE OF ILLINOIS  
 DEPARTMENT OF TRANSPORTATION

TRAFFIC CONTROL FOR WOODWARD  
 PARKING LOT ROAD

SCALE: \_\_\_\_\_ SHEET NO. 1 OF 1 SHEETS STA. \_\_\_\_\_ TO STA. \_\_\_\_\_

F.A.P. RTE. 68	SECTION (12R1)-2	COUNTY LASALLE	TOTAL SHEETS 23	SHEET NO. 12
CONTRACT NO. 66A56				
ILLINOIS FED. AID PROJECT				

**LEGEND**

- DETECTOR LOOP
- CONDUIT IN TRENCH
- - - ELECTRIC CABLE IN CONDUIT, LEAD-IN 14 1 PAIR
- EXISTING UNDERGROUND CONDUIT
- ◻ EXISTING DOUBLE HANDHOLE
- ◻ EXISTING HANDHOLE
- ◻ EXISTING CONTROLLER
- EXISTING DIVE HOLES

DRILL EXISTING FOUNDATION 1 EACH  
 STA. 10+87  
 109' LT.

68'-T  
 4" PVC

DRILL EXISTING HANDHOLE 1 EACH  
 38'-T  
 3" PVC

- Ⓐ EXISTING 2 1/2" ± CONDUIT
- Ⓑ EXISTING 1 1/4" ± CONDUIT
- Ⓒ EXISTING DIVE HOLES

DRILL EXISTING HANDHOLE 2 EACH

6'x15'  
 6'x15'

6'x22'  
 6'x22'

2'x9'  
 2'x9'

EXISTING STOP BAR

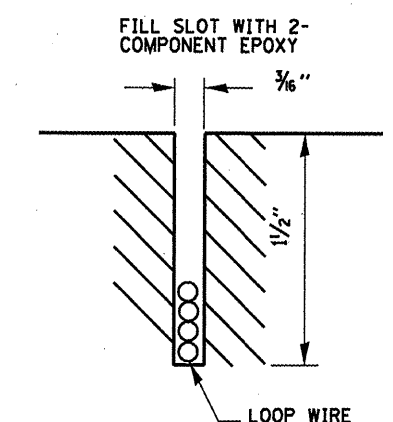
EXISTING 4" SAWED JOINT (TYP.)

EXISTING 4" SAWED JOINT (TYP.)

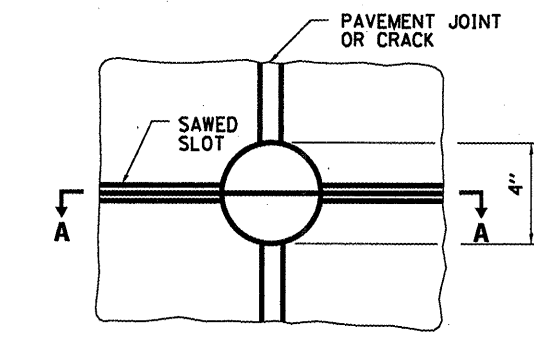
799  
 IL ROUTE 23

EXISTING STOP BAR

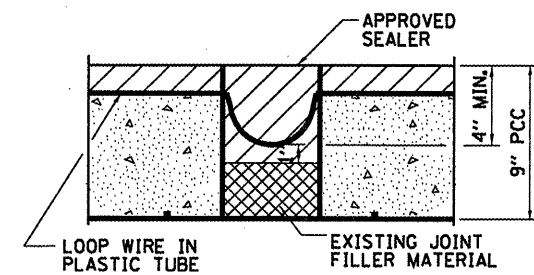
**PLAN**



**DETECTOR LOOP INSTALLATION**



**PLAN**



**SECTION A-A**

NOTE:  
 LOOP WIRE SHALL FOLLOW CUT TO BOTTOM, FORMING SLACK SECTION AT JOINT.

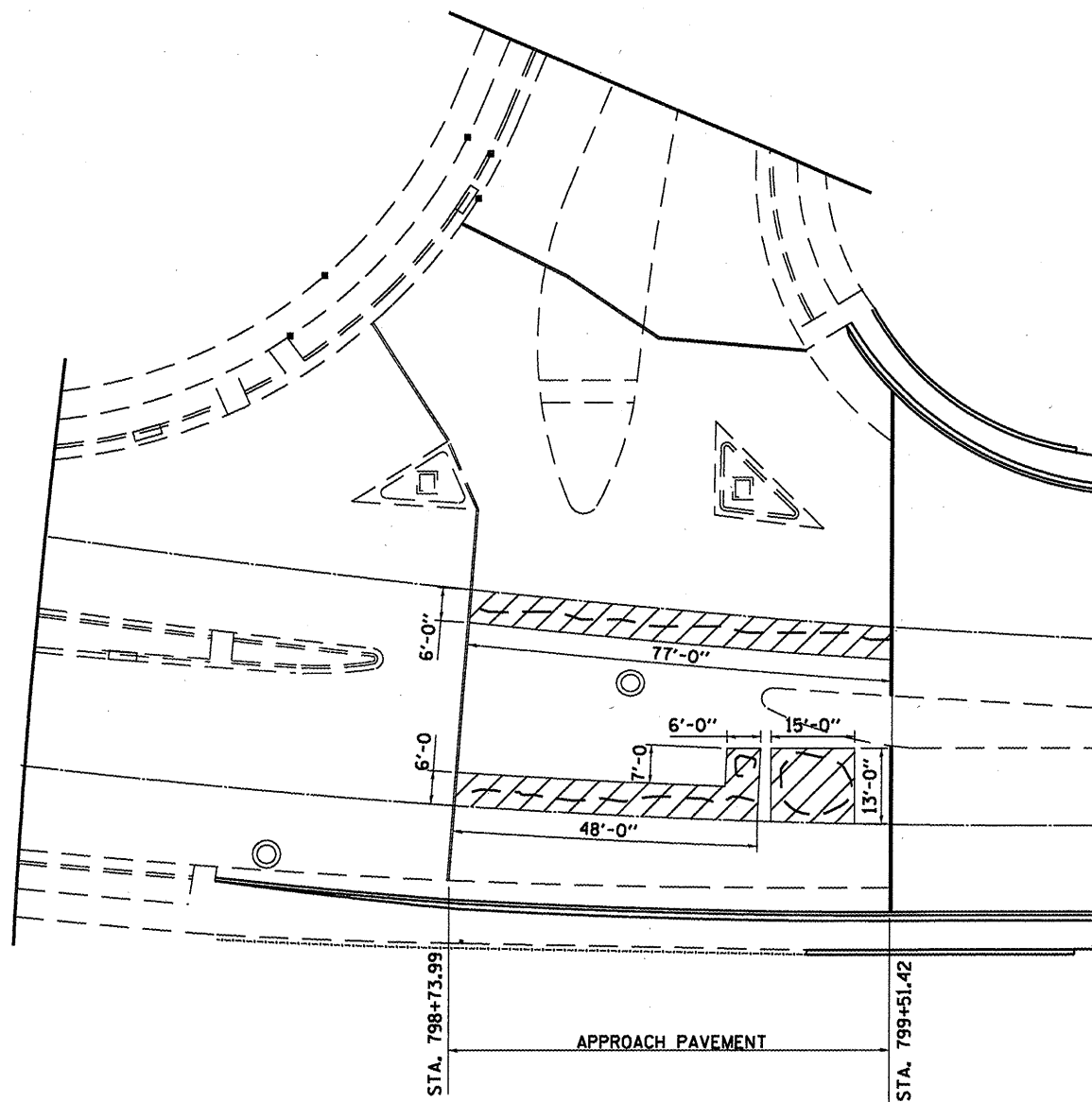
**DETECTOR LOOP AT PAVEMENT JOINT OR PAVEMENT CRACK**

**NOTES:**

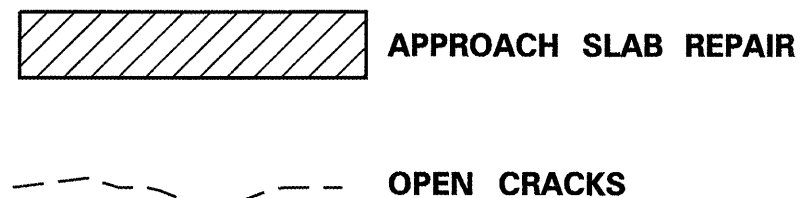
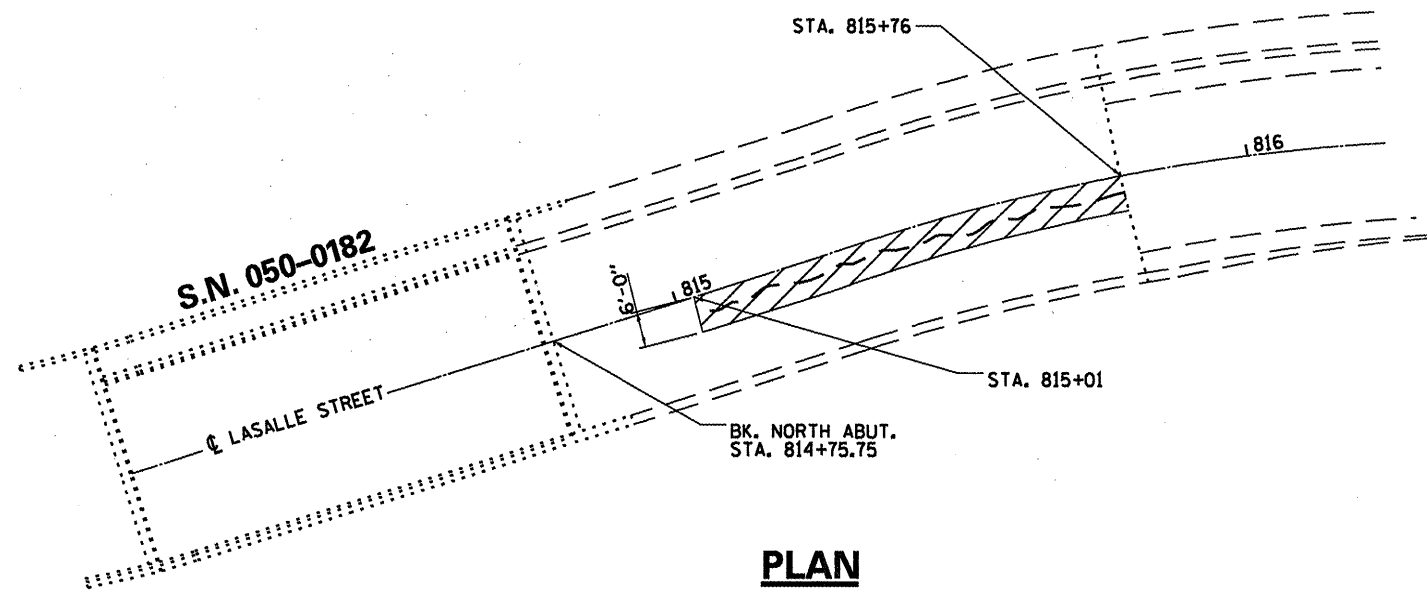
- THE CONTRACTOR SHALL COORDINATE THE PROPOSED DETECTOR LOOP WORK WITH THE DEPARTMENT'S TRAFFIC SIGNAL SECTION PRIOR TO BEGINNING CONSTRUCTION OPERATIONS, PHONE: (815) 434-8506.
- ALL DETECTOR LOOPS SHALL HAVE FOUR (4) TURNS.
- 6'-0" TYPICAL DIMENSION BETWEEN DETECTOR LOOPS.
- ALL EXISTING CONDUIT SHALL REMAIN IN PLACE AND IN USE.

FILE NAME =	USER NAME = woodshankr1	DESIGNED - RON WOODSHANK	REVISED -	<b>STATE OF ILLINOIS DEPARTMENT OF TRANSPORTATION</b>	<b>DETECTOR LOOP DETAILS</b>	F.A.P. RTE.	SECTION	COUNTY	TOTAL SHEETS	SHEET NO.
MAIN11-0366A56-details.dgn	DRAWN - RON WOODSHANK	REVISED -	68			(IZR)1-2	LASALLE	23	13	
PLOT SCALE = 1/8" = 1' IN.	CHECKED -	REVISED -	CONTRACT NO. 66A56							
PLOT DATE = Dec 28, 2010 - 12:43:23 PM	DATE -	REVISED -	ILLINOIS FED. AID PROJECT							

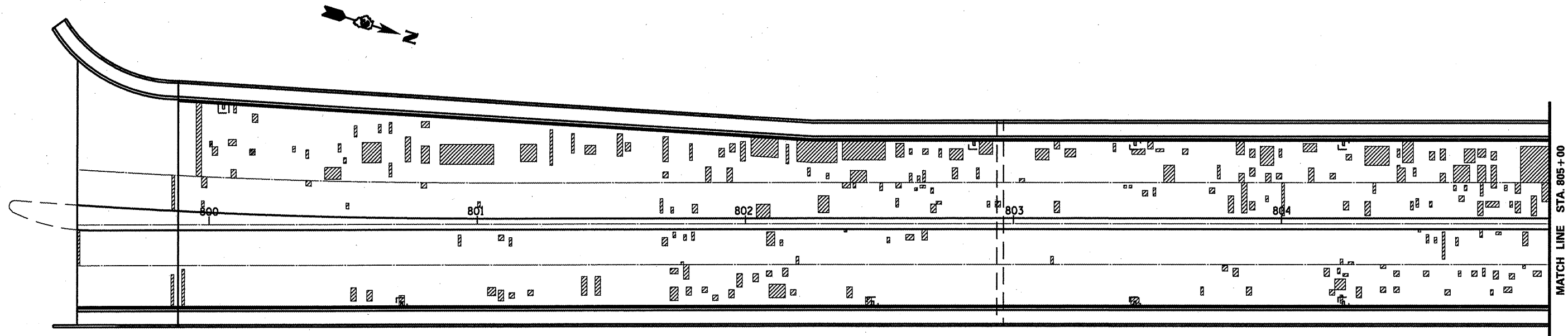




**PLAN**  
**INTERSECTION IL 23 & IL 71**



FILE NAME = c:\pw_work\pwidot\woodshankr1\d0143143	USER NAME = woodshankr1	DESIGNED - RON WOODSHANK	REVISED -	STATE OF ILLINOIS DEPARTMENT OF TRANSPORTATION	APPROACH SLAB REPAIR	F.A.P. RTE.	SECTION	COUNTY	TOTAL SHEETS	SHEET NO.	
	MAIN1-0366A56-details.dgn	DRAWN - RON WOODSHANK	REVISED -			68	(IZR)-2	LASALLE	23	15	
	PLOT SCALE = 100.0000' / IN.	CHECKED -	REVISED -			CONTRACT NO. 66A56		ILLINOIS FED. AID PROJECT			
	PLOT DATE = Dec 28, 2018 - 12:43:49 PM	DATE -	REVISED -	SCALE: _____	SHEET NO. 2 OF 10 SHEETS	STA. _____	TO STA. _____				



 DECK SLAB REPAIR (PARTIAL)

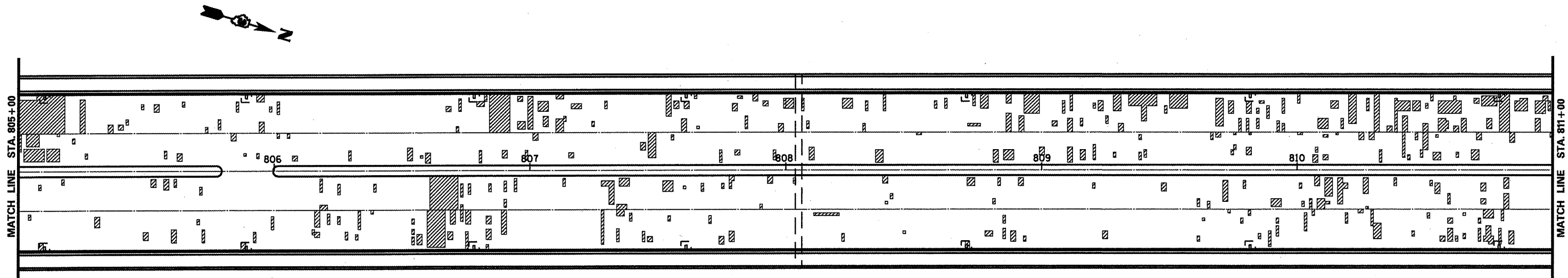
**PLAN**

**NOTES:**

DATE OF DECK SLAB SURVEY: MAY 2010

AREAS OF DECK REPAIRS ARE ESTIMATED. THE ENGINEER SHALL SOUND THE DECK SURFACE PRIOR TO BEGINNING PATCHING OPERATIONS.

THE ENGINEER SHALL SHOW ACTUAL LOCATIONS AND SIZES OF DECK REPAIRS ON "AS-BUILT" PLANS.



 DECK SLAB REPAIR (PARTIAL)

**PLAN**

**NOTES:**

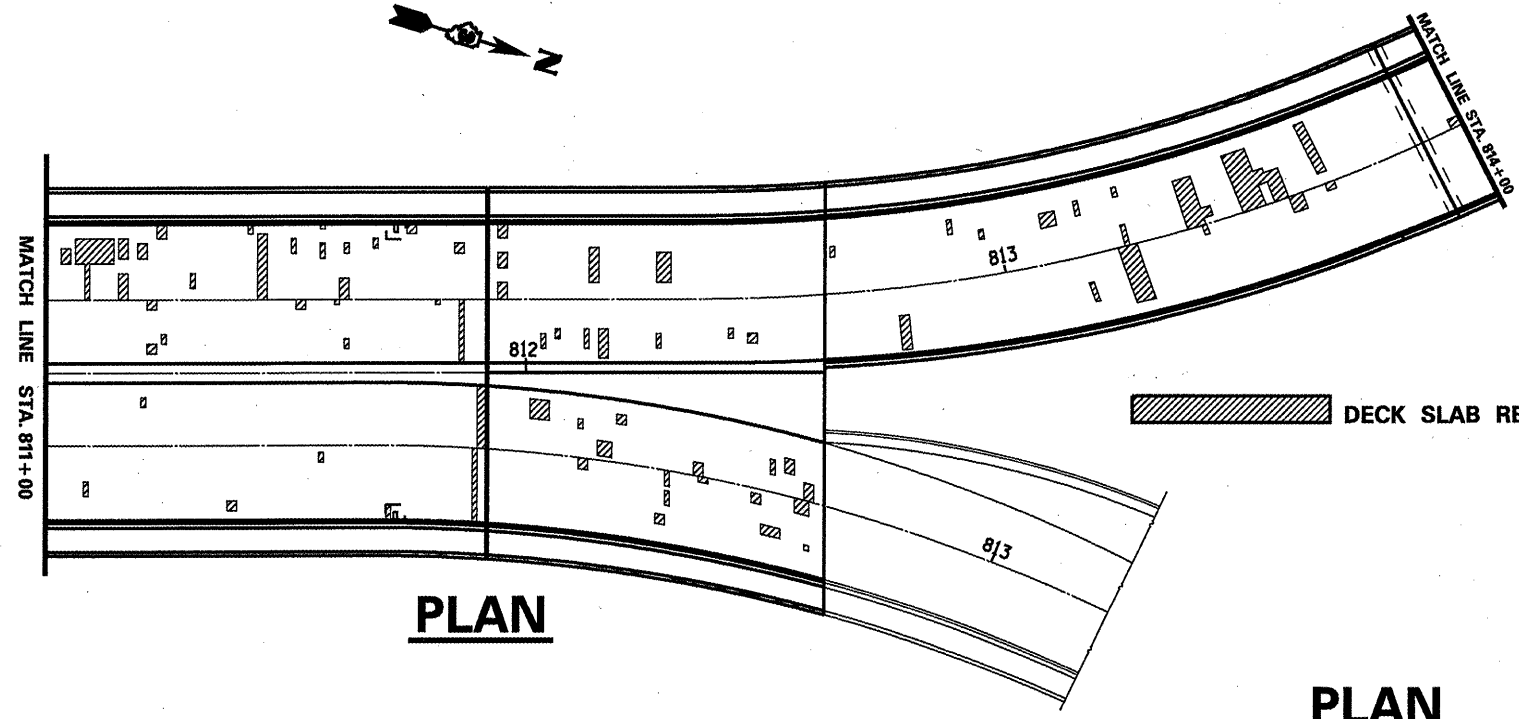
DATE OF DECK SLAB SURVEY: MAY 2010

AREAS OF DECK REPAIRS ARE ESTIMATED. THE ENGINEER SHALL SOUND THE DECK SURFACE PRIOR TO BEGINNING PATCHING OPERATIONS.

THE ENGINEER SHALL SHOW ACTUAL LOCATIONS AND SIZES OF DECK REPAIRS ON "AS-BUILT" PLANS.

FILE NAME =	USER NAME = woodshankr1	DESIGNED - RON WOODSHANK	REVISED -	<b>STATE OF ILLINOIS DEPARTMENT OF TRANSPORTATION</b>	<b>DECK SLAB REPAIR</b>	F.A.P. RTE.	SECTION	COUNTY	TOTAL SHEETS	SHEET NO.
c:\pwwork\pwwork\woodshankr1\d0143143\MAIN1-0366A56-details.dgn	DRAWN - RON WOODSHANK	REVISED -	68			(IZR)-2	LASALLE	23	16	
PLOT SCALE = 100.0000' / IN.	CHECKED -	REVISED -	CONTRACT NO. 66A56							
PLOT DATE = Dec 28, 2010 - 12:44:03 PM	DATE -	REVISED -	ILLINOIS FED. AID PROJECT							
					SCALE: _____	SHEET NO. 3 OF 10 SHEETS		STA. _____ TO STA. _____		

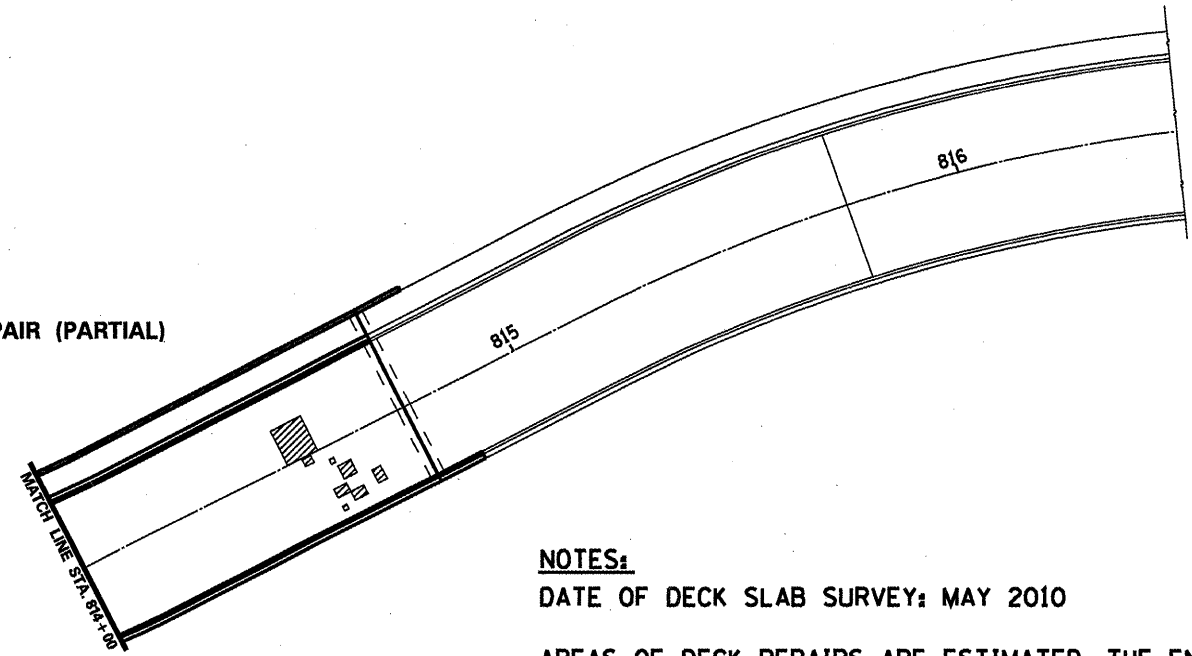




**PLAN**

**DECK SLAB REPAIR (PARTIAL)**

**PLAN**



**NOTES:**

DATE OF DECK SLAB SURVEY: MAY 2010

AREAS OF DECK REPAIRS ARE ESTIMATED. THE ENGINEER SHALL SOUND THE DECK SURFACE PRIOR TO BEGINNING PATCHING OPERATIONS.

THE ENGINEER SHALL SHOW ACTUAL LOCATIONS AND SIZES OF DECK REPAIRS ON "AS-BUILT" PLANS.

FILE NAME =	USER NAME = woodshankr1	DESIGNED - RON WOODSHANK	REVISED -
c:\pw_work\psidot\woodshankr1\d0143143\	MAIN11-0366A56-details.dgn	DRAWN - RON WOODSHANK	REVISED -
	PLOT SCALE = 100.0000' / IN.	CHECKED -	REVISED -
	PLOT DATE = Dec 28, 2010 - 12:44:16 PM	DATE -	REVISED -

STATE OF ILLINOIS  
DEPARTMENT OF TRANSPORTATION

**DECK SLAB REPAIR**

SCALE: SHEET NO. 4 OF 10 SHEETS STA. TO STA.

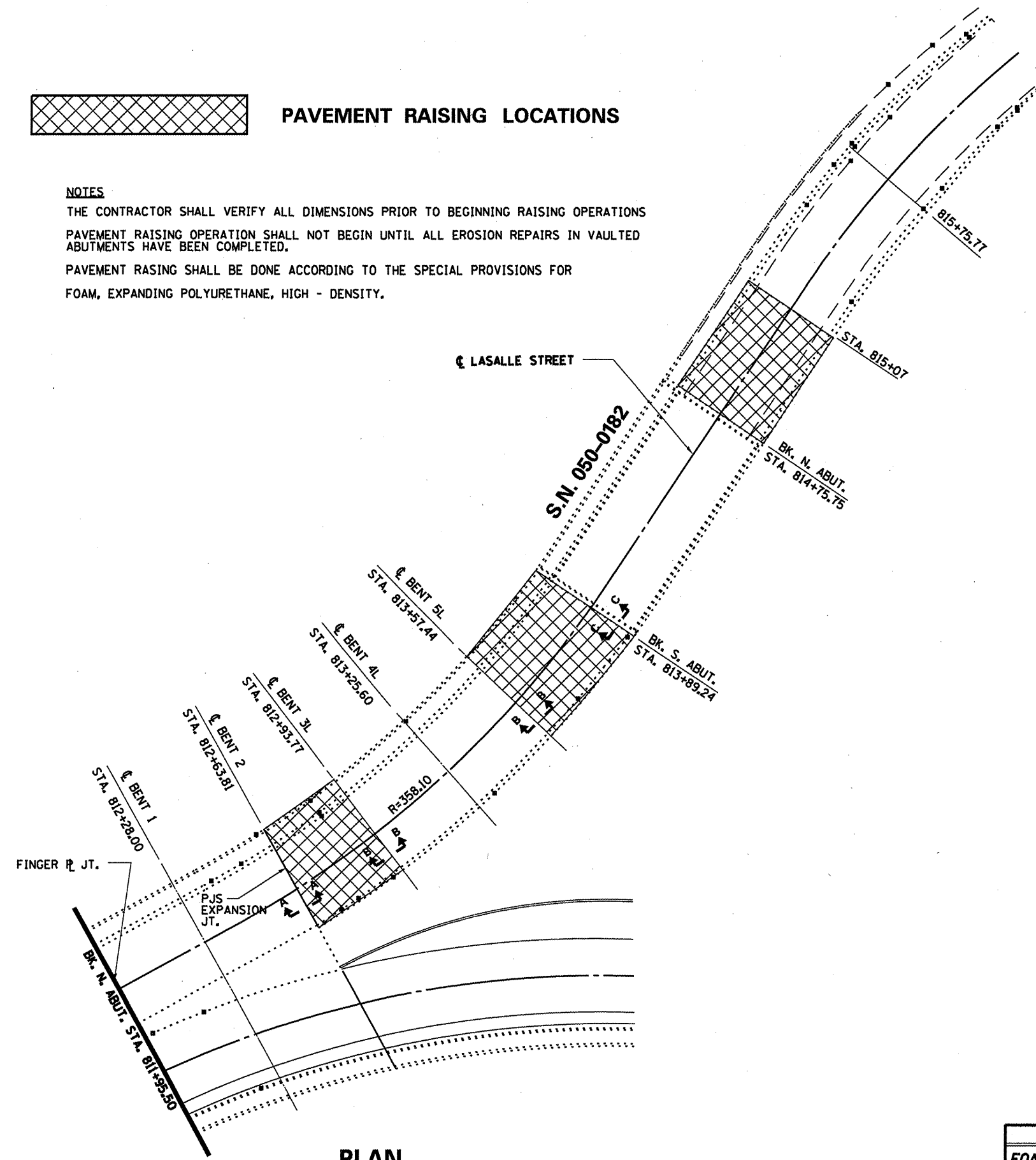
F.A.P. RTE.	SECTION	COUNTY	TOTAL SHEETS	SHEET NO.
68	(IZR)-2	LASALLE	23	17
CONTRACT NO. 66A56				
ILLINOIS FED. AID PROJECT				



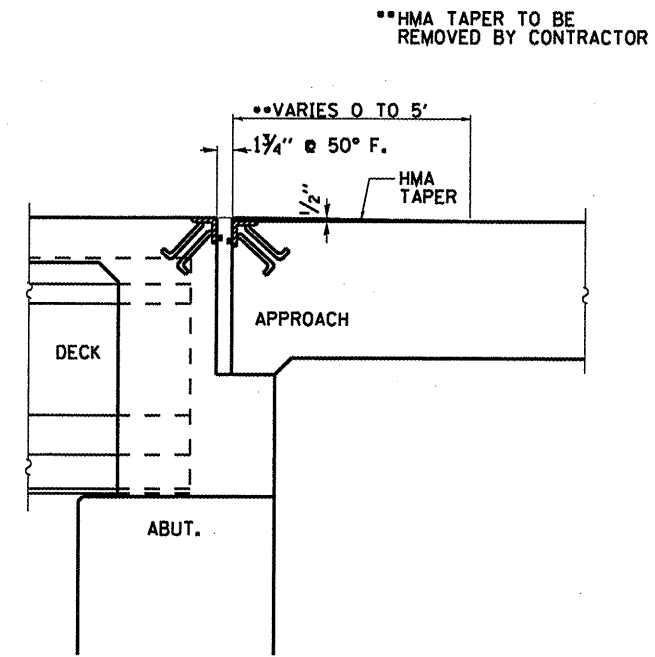
**PAVEMENT RAISING LOCATIONS**

**NOTES**

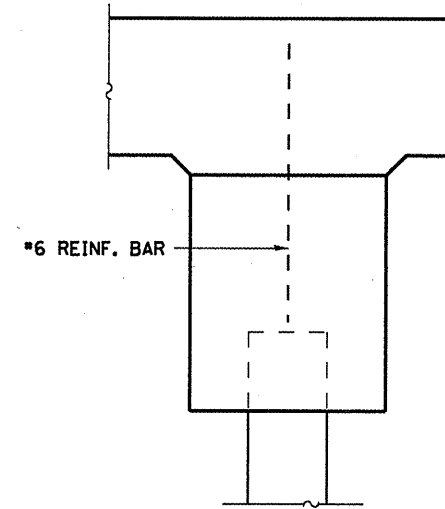
THE CONTRACTOR SHALL VERIFY ALL DIMENSIONS PRIOR TO BEGINNING RAISING OPERATIONS  
 PAVEMENT RAISING OPERATION SHALL NOT BEGIN UNTIL ALL EROSION REPAIRS IN VAULTED ABUTMENTS HAVE BEEN COMPLETED.  
 PAVEMENT RASING SHALL BE DONE ACCORDING TO THE SPECIAL PROVISIONS FOR FOAM, EXPANDING POLYURETHANE, HIGH - DENSITY.



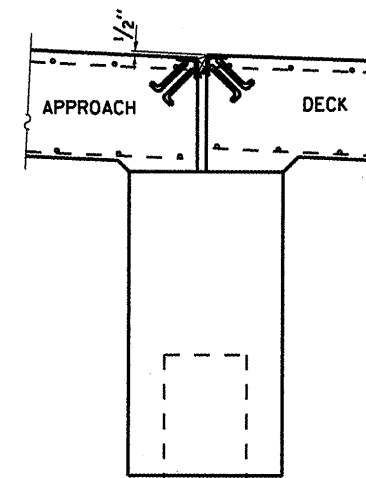
**PLAN**



**SECTION A-A**  
BENT 2



**SECTION B-B**  
BENT 3L, 4L, 5L



**SECTION C-C**  
SOUTH ABUTMENT

**BILL OF MATERIAL**

ITEM	UNIT	TOTAL
FOAM, EXPANDING PLOYURETHANE, HIGH - DENSITY	POUND	2022

**EROSION REPAIR AT VAULTED ABUTS.**

SN 050-0180  
 FAP ROUTE 68 (IL 23)  
 OVER ILLINOIS RIVER  
 SECTION (12R)1-2  
 LASALLE COUNTY  
 STA. 805+45

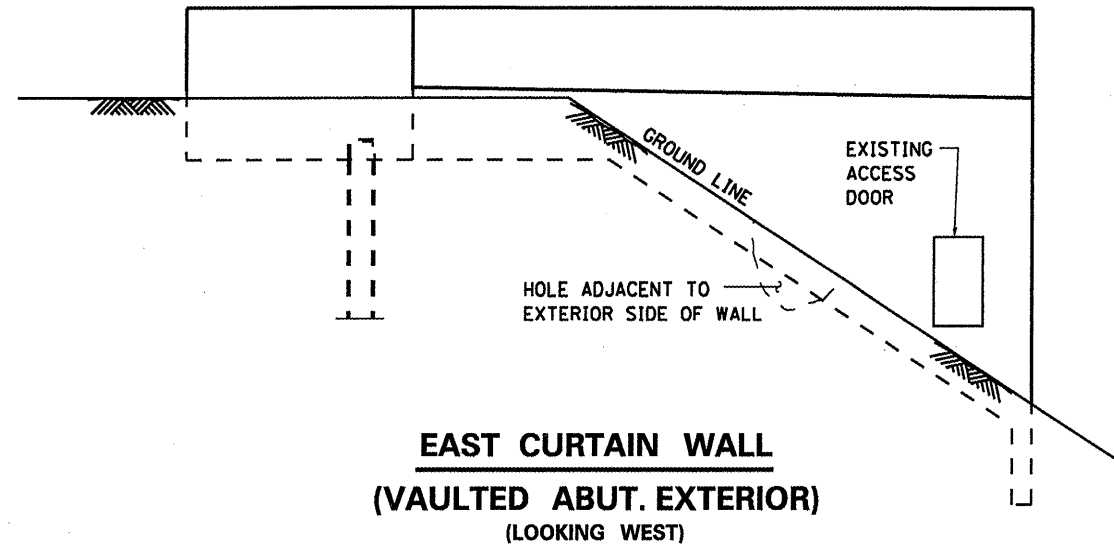
FILE NAME =	USER NAME = woodshankr1	DESIGNED - RON WOODSHANK	REVISED -
ci:\pw_work\p1\dot\woodshankr1\d0143143\CMAIN11-0366A56-de.tex1a.dgn		DRAWN - RON WOODSHANK	REVISED -
PLOT SCALE = 100.0000' / IN.		CHECKED -	REVISED -
PLOT DATE = Dec 20, 2010 - 12:44:31 PM		DATE -	REVISED -

STATE OF ILLINOIS  
 DEPARTMENT OF TRANSPORTATION

**PAVEMENT RAISING**

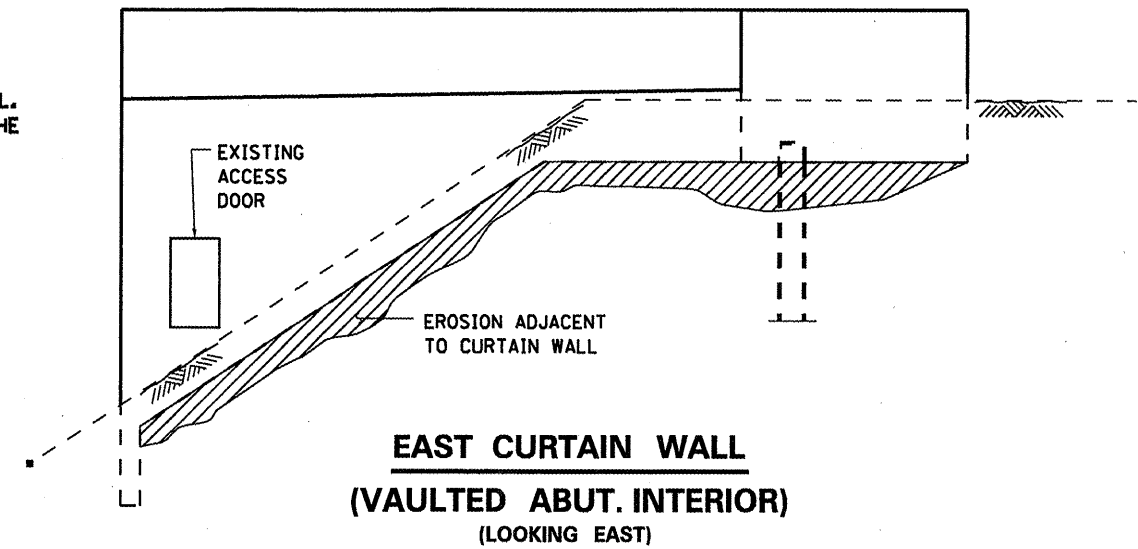
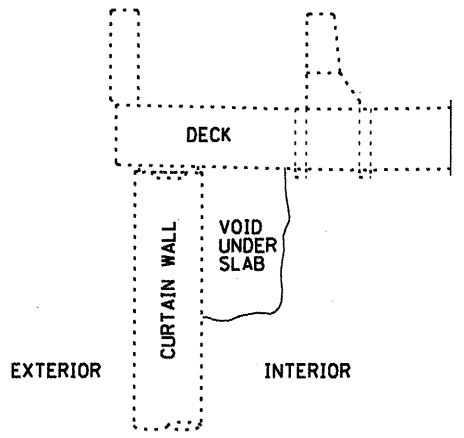
SCALE: SHEET NO. 5 OF 10 SHEETS STA. TO STA.

F.A.P. RTE. 68	SECTION (12R)1-2	COUNTY LASALLE	TOTAL SHEETS 23	SHEET NO. 18
			CONTRACT NO. 66A56	
ILLINOIS FED. AID PROJECT				



**DESCRIPTION OF WORK**

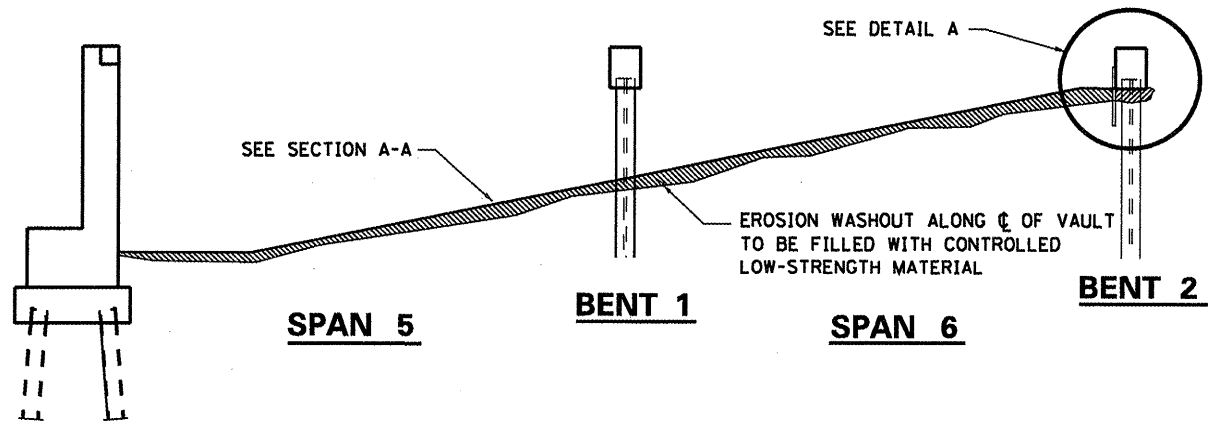
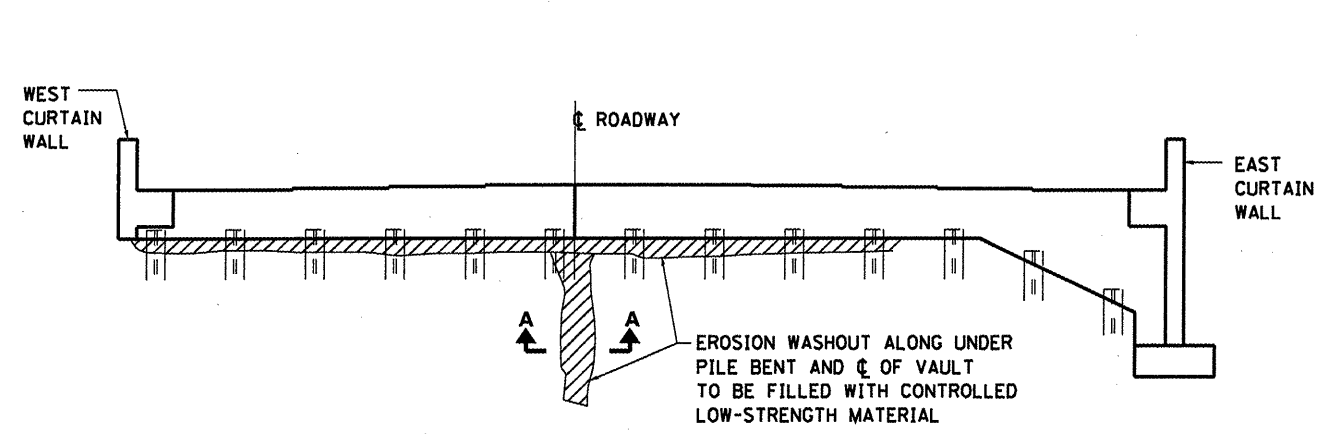
- 1) FILL INTERIOR (OF VAULT) VOIDS/EROSION WASHOUTS ADJACENT TO THE EAST CURTAIN WALL WITH CONTROLLED LOW-STRENGTH MATERIAL.
- 2) FILL EXTERIOR HOLE WITH APPROVED EMBANKMENT MATERIAL. REQUIRED EMBANKMENT MATERIAL SHALL BE INCLUDED IN THE COST OF CONTROLLED LOW-STRENGTH MATERIAL.



**DESCRIPTION OF WORK**

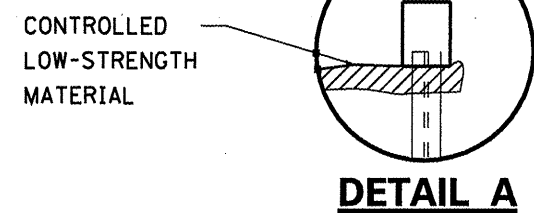
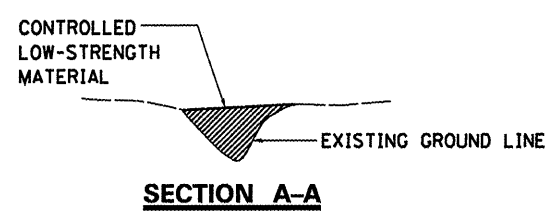
- 1) FILL INTERIOR (OF VAULT) VOIDS/EROSION WASHOUTS UNDER PILE BENT 2 AND ADJACENT TO  $\phi$  OF VAULT WITH CONTROLLED LOW-STRENGTH MATERIAL.

**SPAN 1 SOUTH**



**SPAN 5 & 6 (NORTH)**

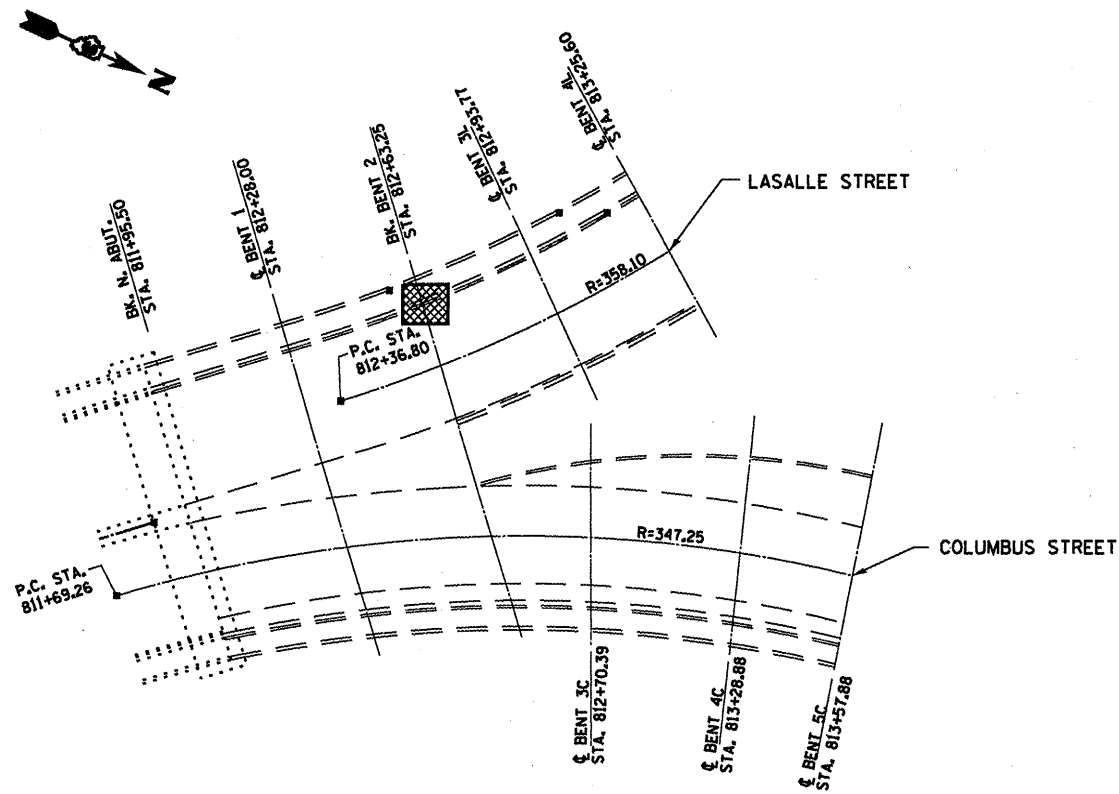
**NOTE**  
PAVEMENT RAISING OPERATION SHALL NOT BEGIN UNTIL ALL EROSION REPAIRS IN VAULTED ABUTMENTS HAVE BEEN COMPLETED.



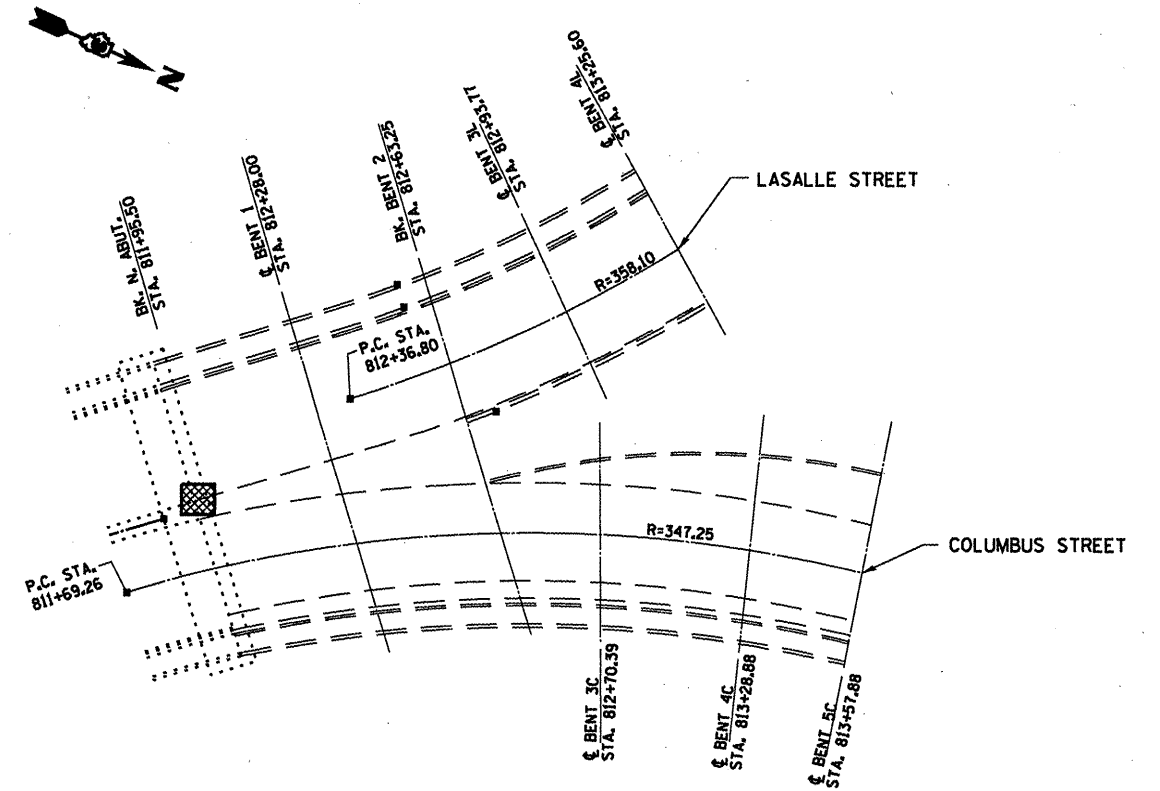
**NOTE:**  
AREA UNDER ABUTMENT CAP SHALL BE FILLED AND CURED PRIOR TO FILLING OF SLOPE EROSION.

**EROSION REPAIR AT VAULTED ABUTS.**  
SN 050-0180  
FAP ROUTE 68 (IL 23)  
OVER ILLINOIS RIVER  
SECTION (12R)-2  
LASALLE COUNTY  
STA. 805+45

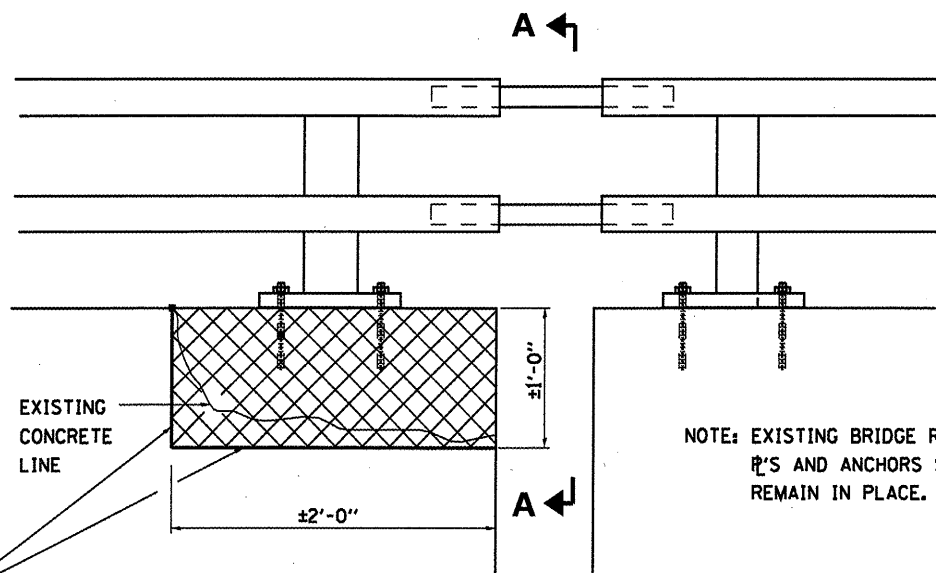
FILE NAME =	USER NAME = woodshankr1	DESIGNED - RON WOODSHANK	REVISED -	<b>STATE OF ILLINOIS DEPARTMENT OF TRANSPORTATION</b>	<b>EROSION REPAIRS - VAULTED ABUTMENTS</b>	F.A.P. RTE.	SECTION	COUNTY	TOTAL SHEETS	SHEET NO.
cd:\pvt\work\pvt\dot\woodshankr1\d0143143\MAIN1-0366A66-details.dgn	DRAWN - RON WOODSHANK	REVISED -	68			(12R)-2	LASALLE	23	19	
PLOT SCALE = 100.0000' / IN.	CHECKED -	REVISED -	CONTRACT NO. 66A56							
PLOT DATE = Dec 28, 2010 - 12:44:58 PM	DATE -	REVISED -	ILLINOIS FED. AID PROJECT							



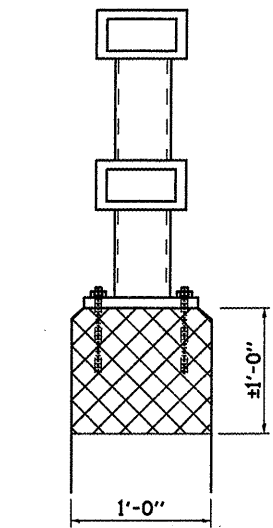
**PLAN (NORTH)**



**PLAN (NORTH)**

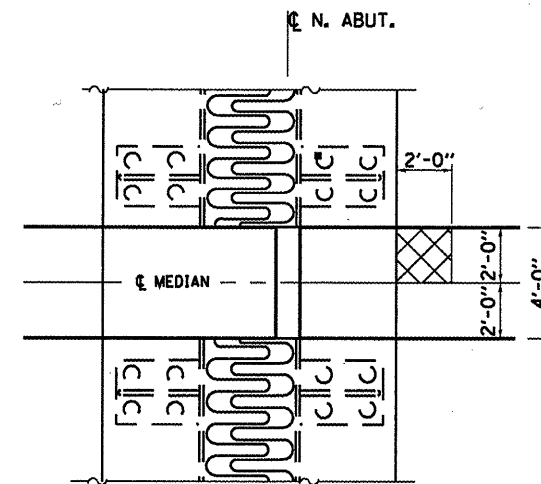


**BENT 2 WEST PARAPET  
(LASALLE STREET)**

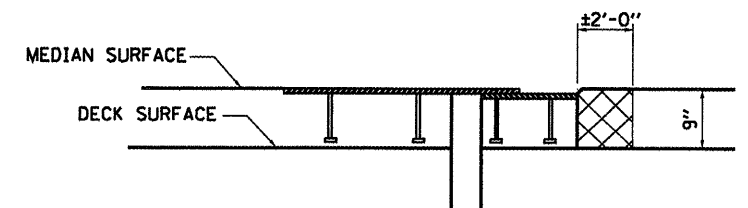


**SECTION A-A**

NOTE: EXISTING BRIDGE RAIL,  
P'S AND ANCHORS SHALL  
REMAIN IN PLACE.



**PLAN AT WEST ABUTMENT**



**ELEVATION AT MEDIAN**

REMOVE AND REPLACE CONCRETE

**BILL OF MATERIAL**

ITEM	UNIT	TOTAL
CONCRETE REMOVAL	CU YD	0.2

**BILL OF MATERIAL**

ITEM	UNIT	TOTAL
CONCRETE SUPERSTRUCTURE	CU YD	0.2

**CONCRETE REPAIRS**

SN 050-0180  
FAP ROUTE 68 (IL 23)  
OVER ILLINOIS RIVER  
SECTION (12R)-2  
LASALLE COUNTY  
STA. 805+45

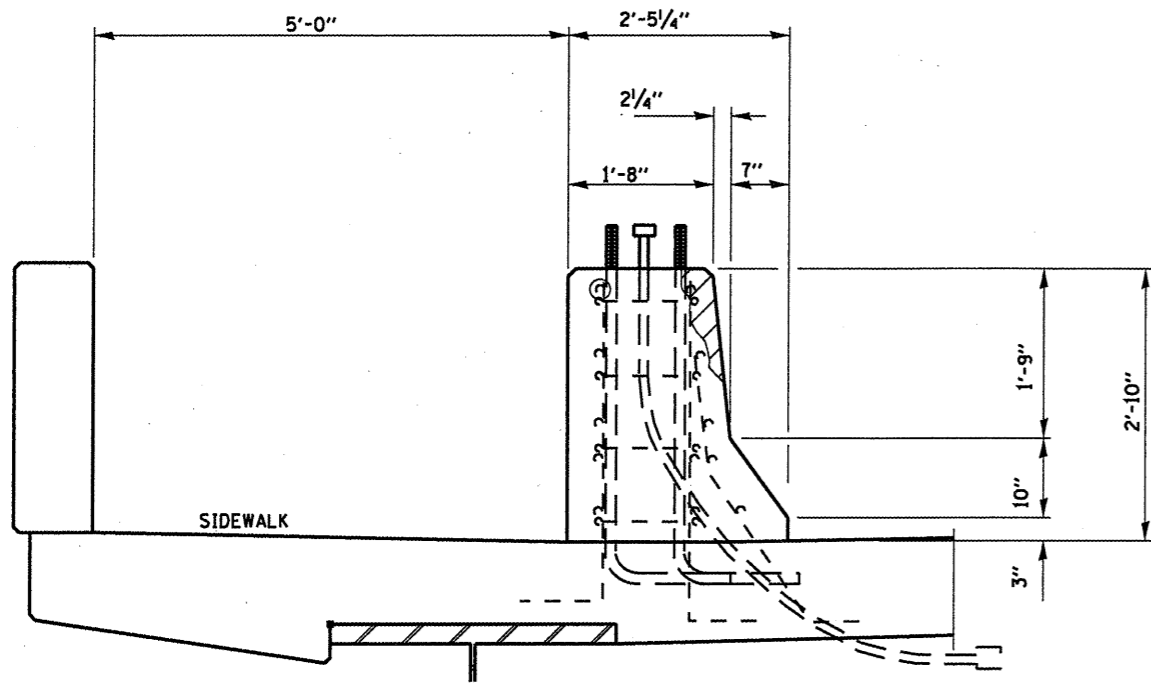
FILE NAME =	USER NAME = woodshankr1	DESIGNED - RON WOODSHANK	REVISED -
ca:\pwwork\pwwork\woodshankr1\cd0143143\MAIN11-0366A56-details.dgn		DRAWN - RON WOODSHANK	REVISED -
	PLOT SCALE = 100.0000' / IN.	CHECKED -	REVISED -
	PLOT DATE = Dec 20, 2010 12:45:08 PM	DATE -	REVISED -

STATE OF ILLINOIS  
DEPARTMENT OF TRANSPORTATION

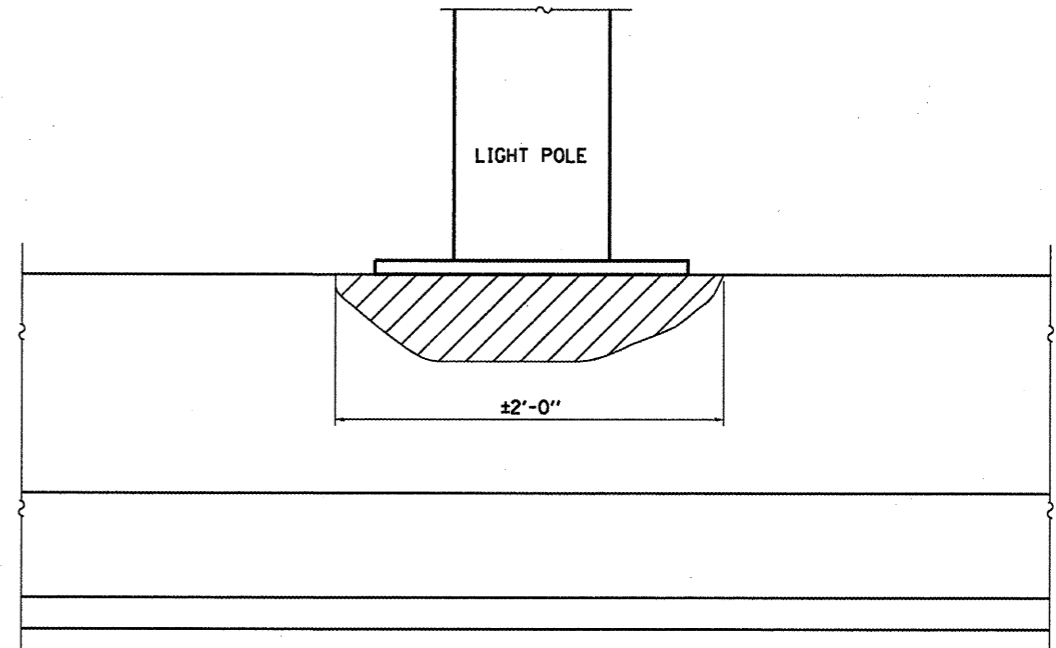
**CONCRETE REPAIRS**

SCALE: SHEET NO. 7 OF 10 SHEETS STA. TO STA.

F.A.P. RTE. 68	SECTION (12R)-2	COUNTY LASALLE	TOTAL SHEETS 23	SHEET NO. 20
			CONTRACT NO. 66A56	
ILLINOIS FED. AID PROJECT				



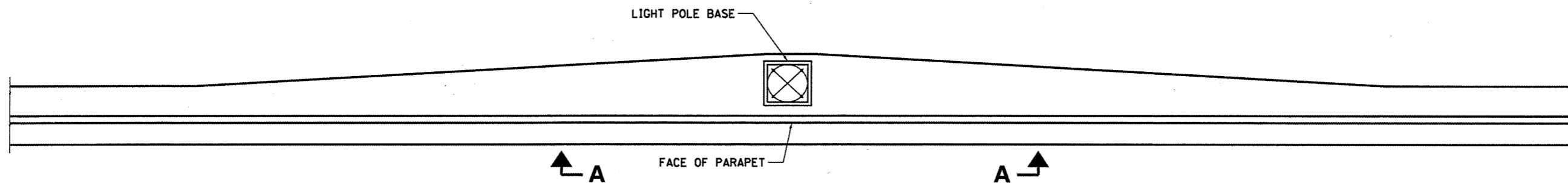
**CURB SECTION AT LIGHT PEDESTAL**



**SECTION A-A**



**STRUCTURAL REPAIR OF CONCRETE  
(DEPTH EQUAL TO OR LESS THAN 5 INCHES)**

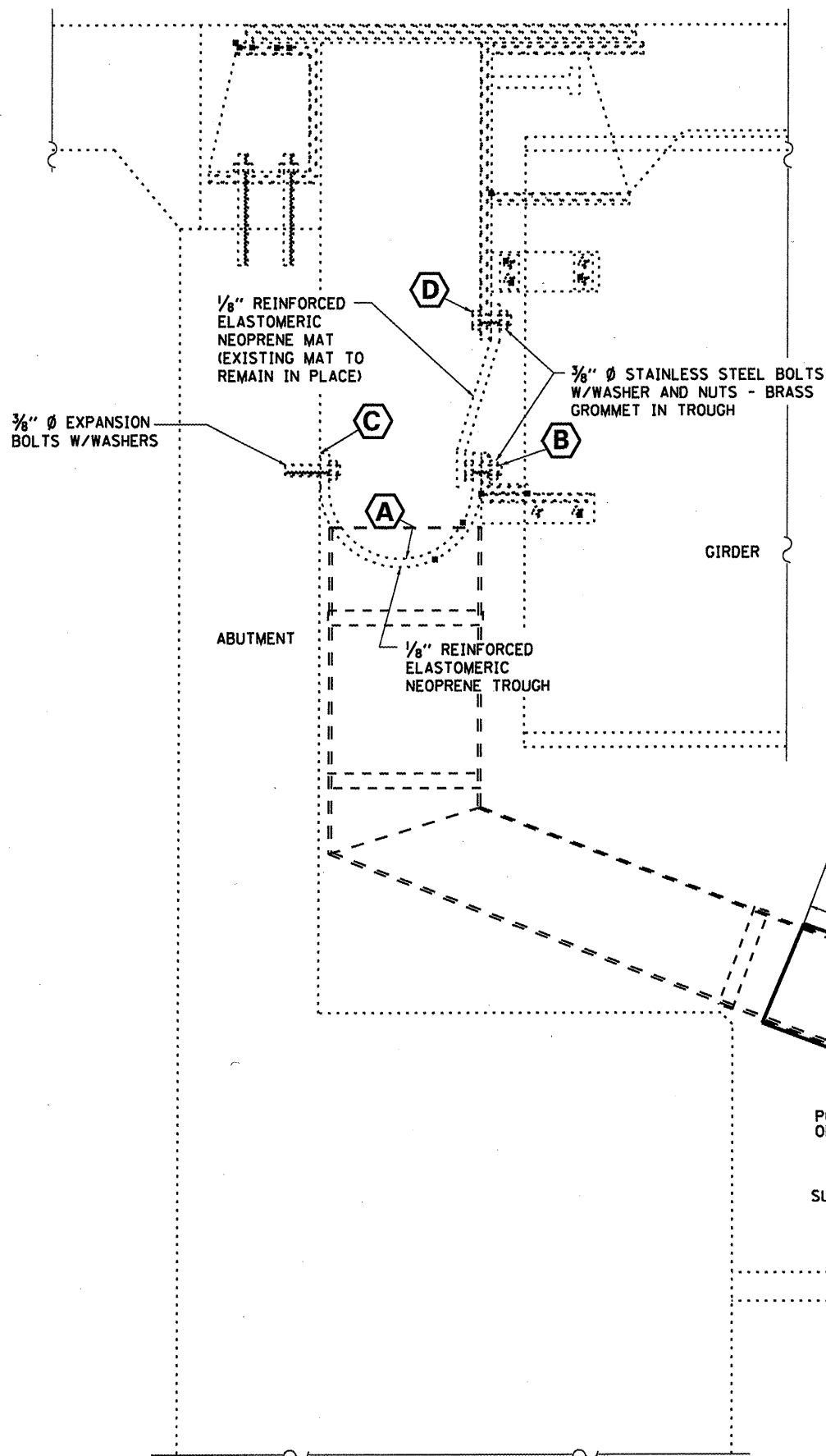


**PLAN**  
STA. 798+87.46  
32' RT.

**NOTES:**  
THE CONTRACTOR SHALL SUPPORT THE EXISTING LIGHT POLE DURING CONCRETE REPAIR OPERATION.  
THE CONTRACTORS SUPPORT METHODS SHALL BE APPROVED BY THE ENGINEER PRIOR TO INSTALLATION OF SUPPORT.

**BILL OF MATERIAL**

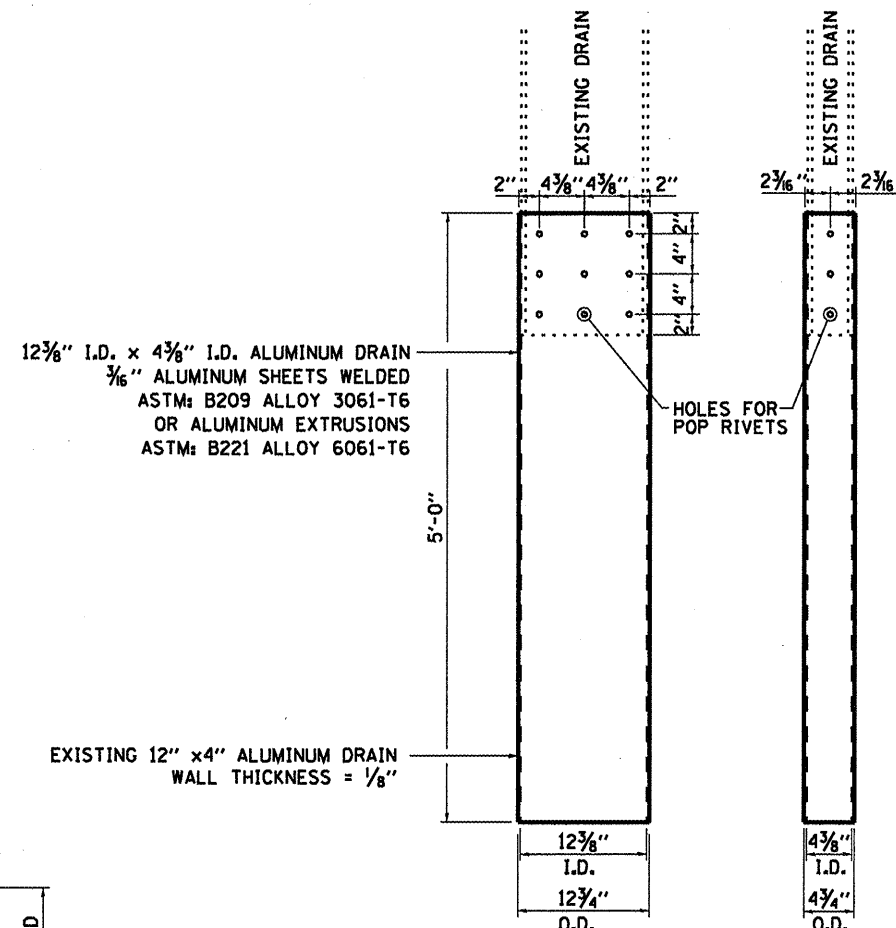
ITEM	UNIT	TOTAL
STRUCTURAL REPAIR OF CONCRETE (DEPTH EQUAL TO OR LESS THAN 5 INCHES)	50 FT	2



**ELEVATION AT ABUTMENTS**

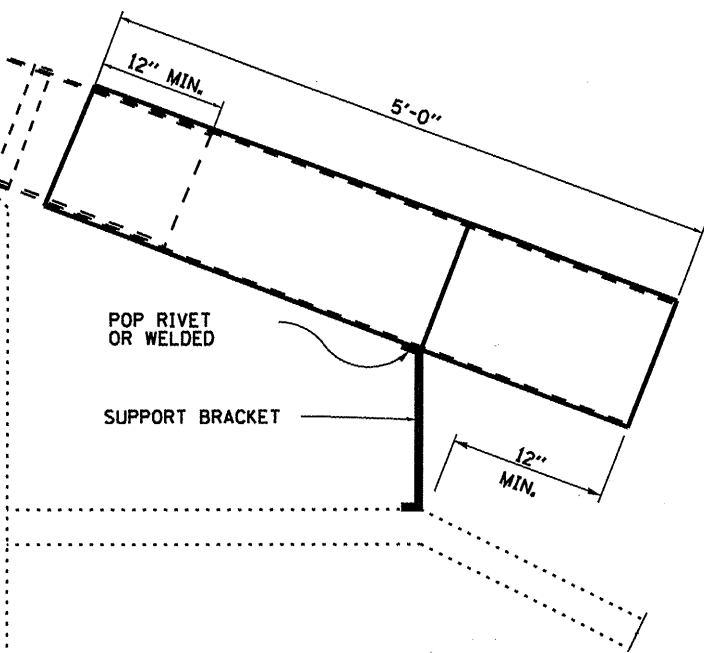
**DESCRIPTION OF WORK**

- A** CLEAN ELASTOMERIC TROUGH AT THE NORTH AND SOUTH ABUTMENTS.
- B** INSTALL OR REPLACE BOLTS, NUTS AND WASHERS AS REQUIRED TO REPAIR OR REPLACE DETERIORATED OR MISSING BOLTS.
- C** SEAL WITH SILICONE CAULK THE ENTIRE LENGTH AFTER CLEANING OF THE TROUGH HAS BEEN COMPLETED.
- D** INSTALL OR REPLACE BOLTS, NUTS AND WASHERS AS REQUIRED TO REPAIR OR REPLACE DETERIORATED OR MISSING BOLTS.
- E** EXTEND EXISTING TROUGH DRAINS AT EACH END OF SOUTH ABUTMENT



**FRONT VIEW      SIDE VIEW**

**DRAIN DETAIL**



ANGLE TO BE FIELD DETERMINED

1/2" x 12 1/2" ALUMINUM BAR BENT OF WELDED SHEETS

**SUPPORT BRACKET**

**BILL OF MATERIAL**

ITEM	UNIT	TOTAL
ABUTMENT DRAINS	EACH	2

**EXPANSION JOINT TROUGH REPAIR**  
 SN 050-0180  
 FAP ROUTE 68 (IL 23)  
 OVER ILLINOIS RIVER  
 SECTION (1ZRI)-2  
 LASALLE COUNTY  
 STA. 805+45

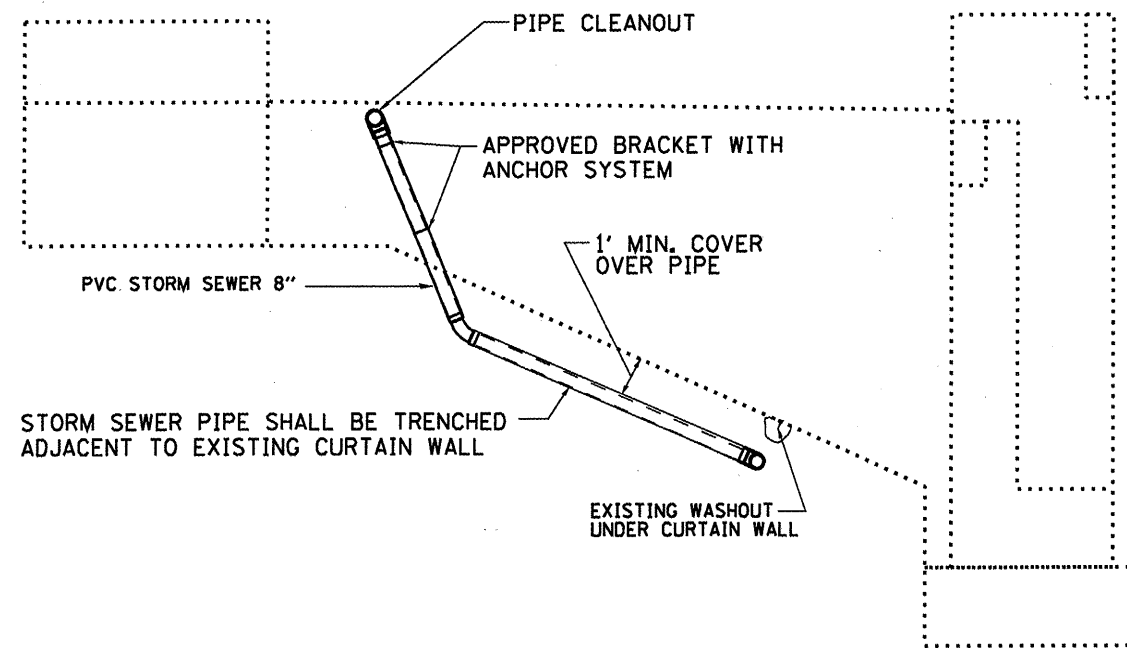
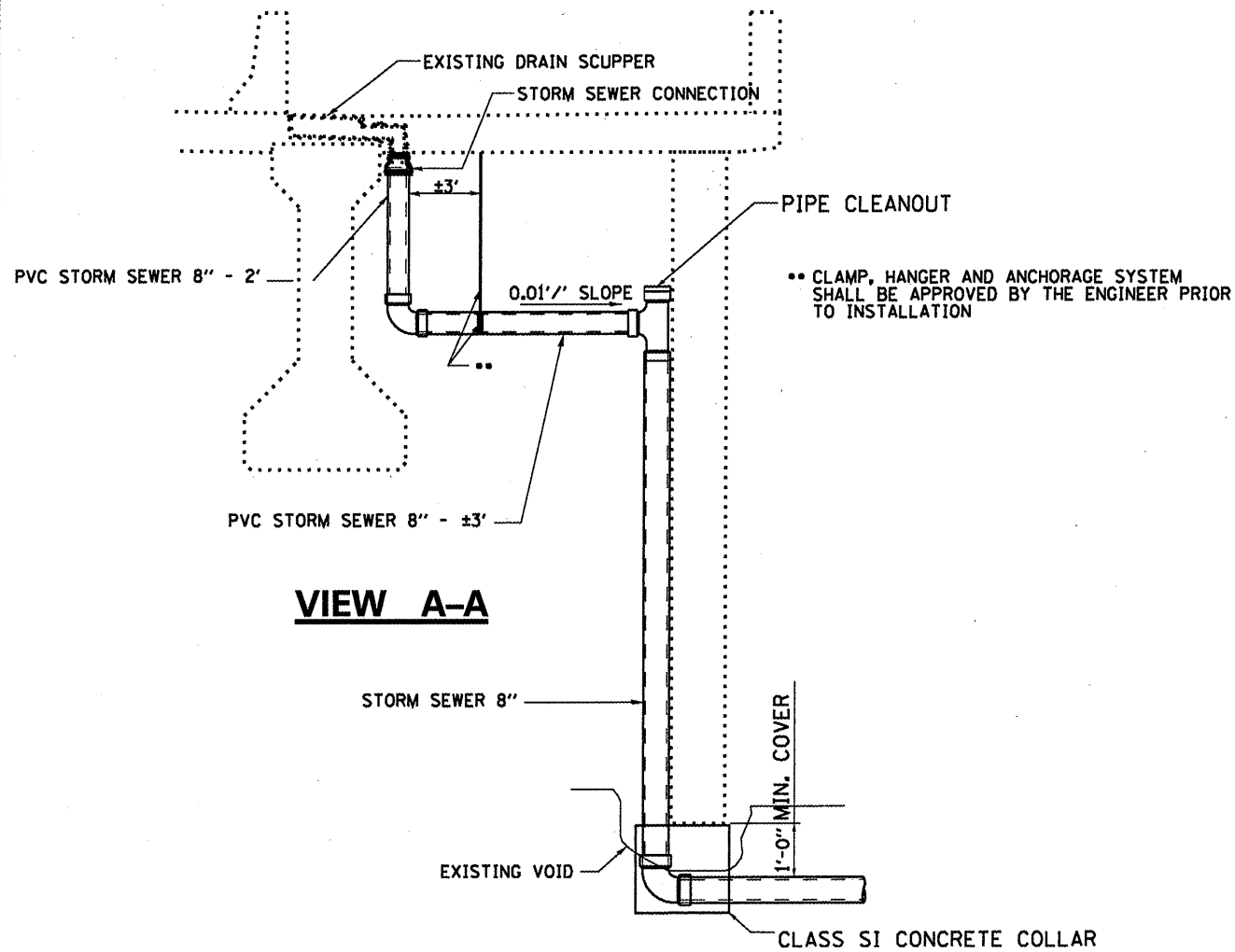
FILE NAME =	USER NAME = woodshankr1	DESIGNED - RON WOODSHANK	REVISED -
at\pwwork\pwwdot\woodshankr1\d08143143	MAIN11-0366A56-details.dgn	DRAWN - RON WOODSHANK	REVISED -
	PLOT SCALE = 100.0000 / IN.	CHECKED -	REVISED -
	PLOT DATE = Dec 28, 2010 - 12:45:43 PM	DATE -	REVISED -

STATE OF ILLINOIS  
 DEPARTMENT OF TRANSPORTATION

**EXPANSION JOINT TROUGH**

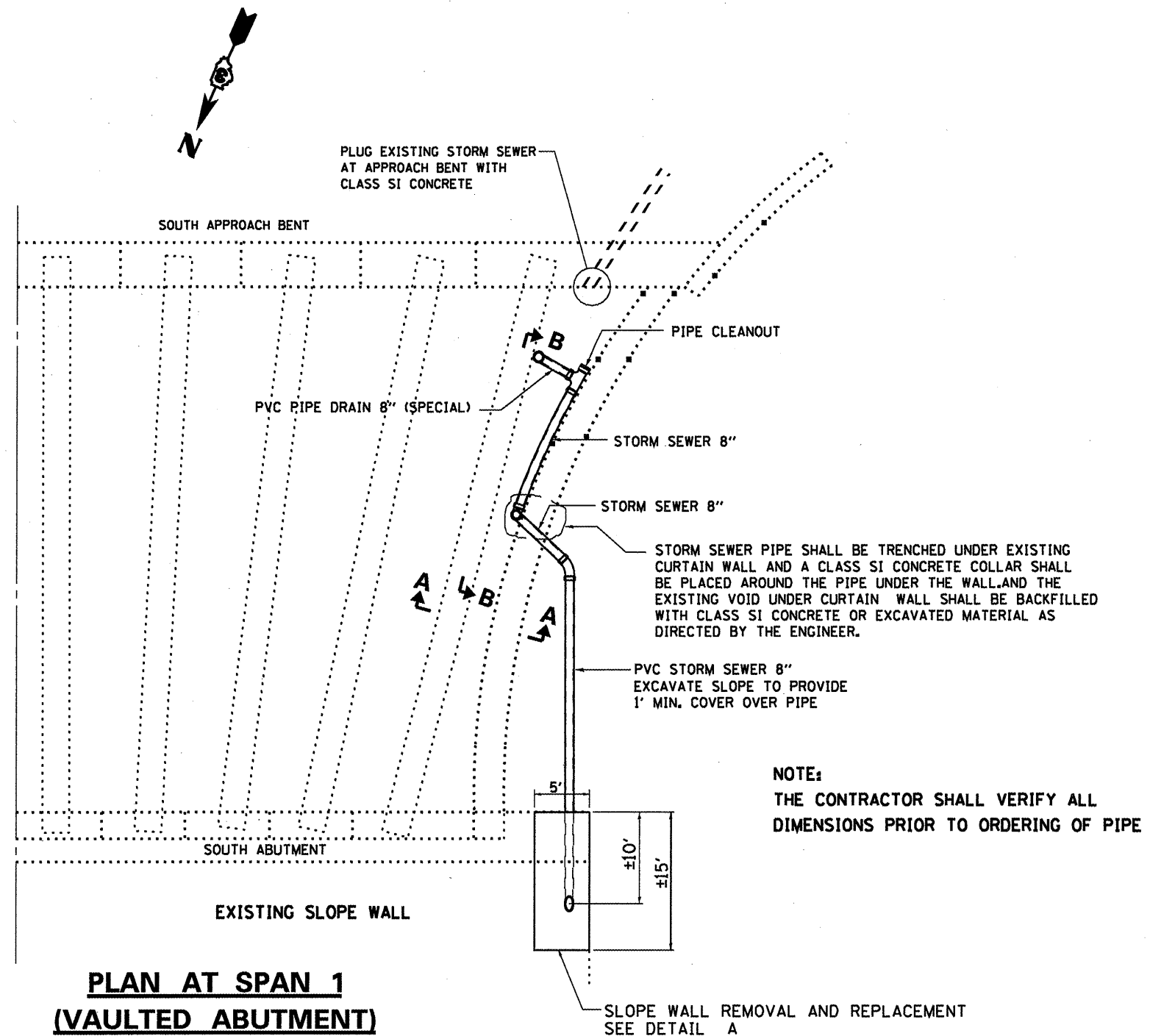
SCALE: SHEET NO. 9 OF 10 SHEETS STA. TO STA.

F.A.P. RTE.	SECTION	COUNTY	TOTAL SHEETS	SHEET NO.
68	(1ZRI)-2	LASALLE	23	22
			CONTRACT NO. 66A56	
ILLINOIS FED. AID PROJECT				

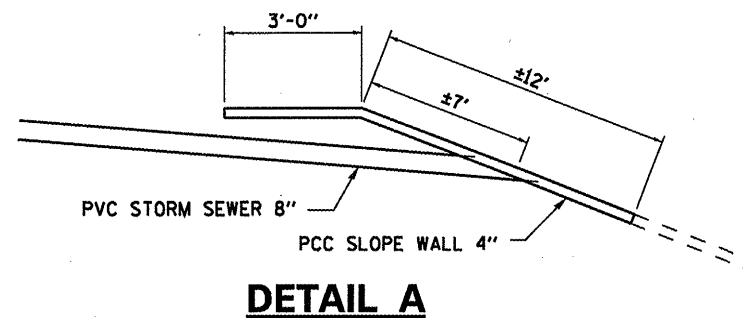


**CURTAIN WALL INTERIOR ELEVATION**

SOUTHWEST CURTAIN WALL



**PLAN AT SPAN 1 (VAULTED ABUTMENT)**



**DETAIL A**

**BILL OF MATERIAL**

ITEM	UNIT	TOTAL
STORM SEWER REPAIR	FOOT	70

**STORM SEWER REPAIR**  
SN 050-0180  
FAP ROUTE 68 (IL 23)  
OVER ILLINOIS RIVER  
SECTION (12R1)-2  
LASALLE COUNTY  
STA. 805+45

FILE NAME =	USER NAME = woodshankr1	DESIGNED - RON WOODSHANK	REVISED -
ct:\pvc_work\pvc\dot\woodshankr1\d0143143\MAIN1-0366A56-details.dgn		DRAWN - RON WOODSHANK	REVISED -
	PLOT SCALE = 100.0000' / IN.	CHECKED -	REVISED -
	PLOT DATE = Dec 28, 2010 - 12:45:57 PM	DATE -	REVISED -

STATE OF ILLINOIS  
DEPARTMENT OF TRANSPORTATION

**STORM SEWER REPAIR**

SCALE: SHEET NO. 10 OF 10 SHEETS STA. TO STA.

F.A.P. RTE.	SECTION	COUNTY	TOTAL SHEETS	SHEET NO.
68	(12R1)-2	LASALLE	23	23
CONTRACT NO. 66A56			ILLINOIS FED. AID PROJECT	