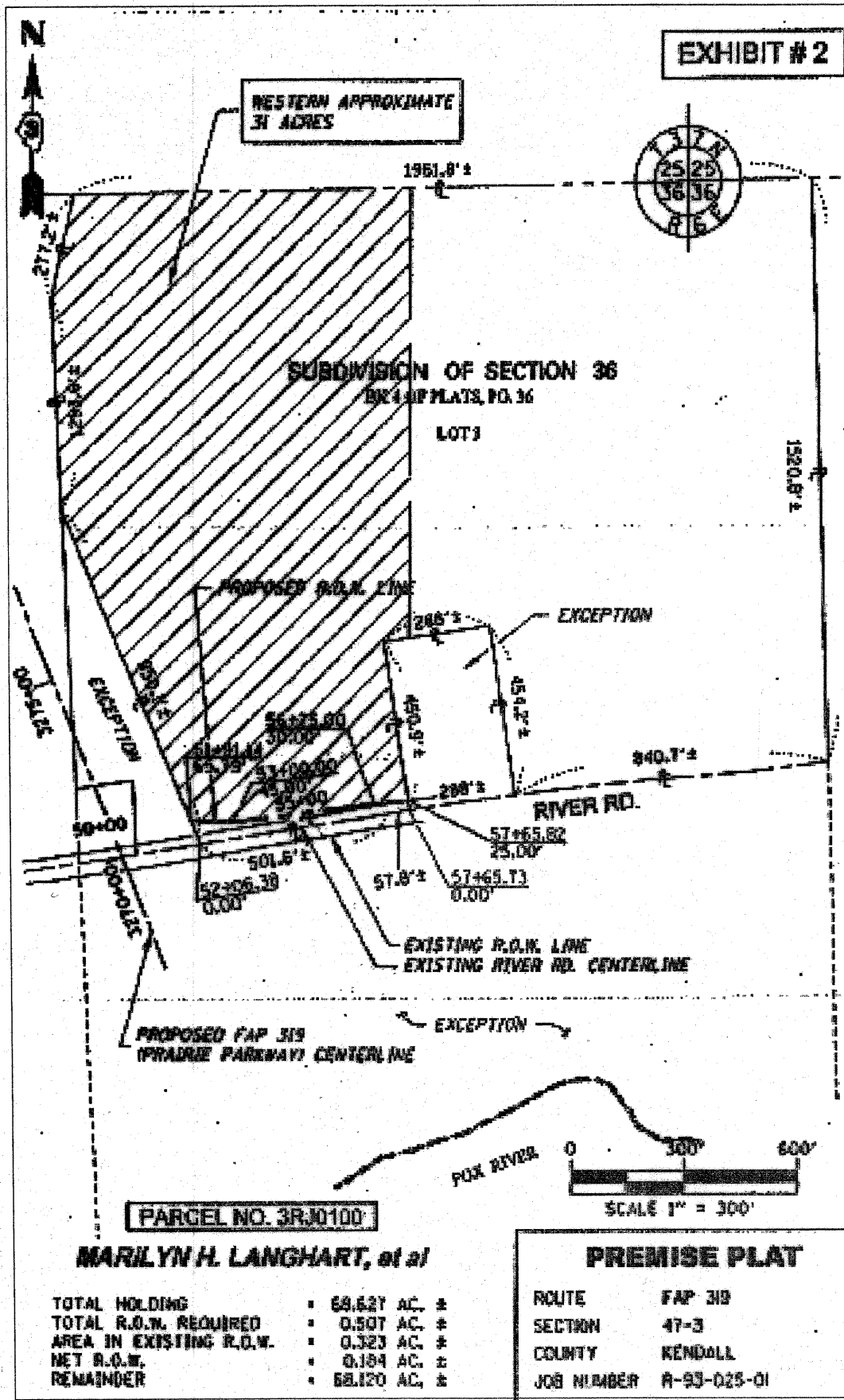


EXHIBIT # 2



GENERAL NOTES

(Revised May 13, 2009)

SEEDING SHALL NOT BE PERMITTED AT ANY TIME WHEN THE GROUND IS FROZEN, WET, OR IN AN UNTILLABLE CONDITION. LOCATIONS TO BE SEEDING WILL BE DETERMINED BY THE ENGINEER.

ONLY THOSE TREES DESIGNATED BY THE ENGINEER OR LISTED IN THE TREE REMOVAL SCHEDULE SHALL BE REMOVED. THE CONTRACTOR SHALL PROTECT ALL REMAINING TREES FROM DAMAGE DUE TO HIS OPERATIONS.

ANY REFERENCE TO A STANDARD IN THESE PLANS SHALL BE INTERPRETED TO MEAN THE EDITION AS INDICATED BY THE SUBNUMBER SHOWN IN THE LIST OF STANDARDS OR THE COPY INCLUDED IN THESE PLANS.

THE CONTRACTOR SHALL CONTACT JULIE AT LEAST 48 HOURS PRIOR TO EXCAVATION TO DETERMINE WHICH UTILITIES ARE IN THE AREA.

COMMITMENT:

TO COMPLY WITH THE ENVIRONMENTAL CLEARANCE REQUIREMENTS ANY DISTURBED EARTH SHALL NOT BE REMOVED FROM THE JOB SITE.

STATE OF ILLINOIS
DEPARTMENT OF TRANSPORTATION
DISTRICT THREE

PREPARED BY: Dee Brown
DISTRICT STUDIES & PLANS ENGINEER

DATE: October 27, 2010

EXAMINED BY: Michael D. [Signature]
DISTRICT CONSTRUCTION ENGINEER

Wayne L. Phillips
DISTRICT MATERIALS ENGINEER

Paul A. Huck
DISTRICT OPERATIONS ENGINEER

FILE NAME =	USER NAME = schwankerg	DESIGNED -	REVISED -	STATE OF ILLINOIS DEPARTMENT OF TRANSPORTATION	GENERAL NOTES	F.A.P. RTE.	SECTION	COUNT	TOTAL SHEETS	SHEET NO.	
ca\pwwork\pwwork\schwankerg\d2234958\388466-sht-cover.dgn		DRAWN -	REVISED -			319	(47-3I)	KENDALL	8	2	
PLOT SCALE = 50.0000 / IN.		CHECKED -	REVISED -			CONTRACT NO. 66A€6					
PLOT DATE = Oct 27, 2010 - 10:02:29 AM		DATE -	REVISED -			ILLINOIS FED. AID PROJECT					