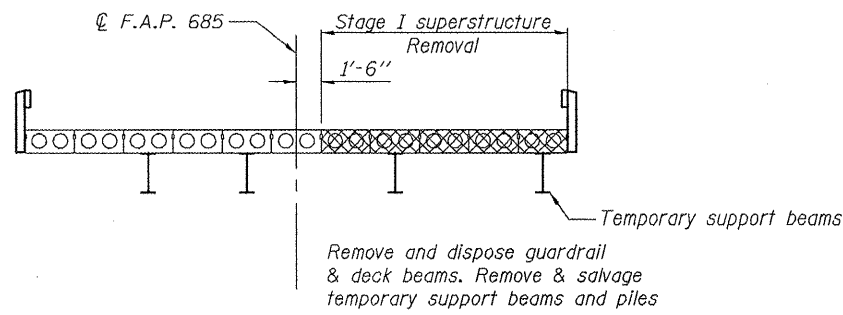
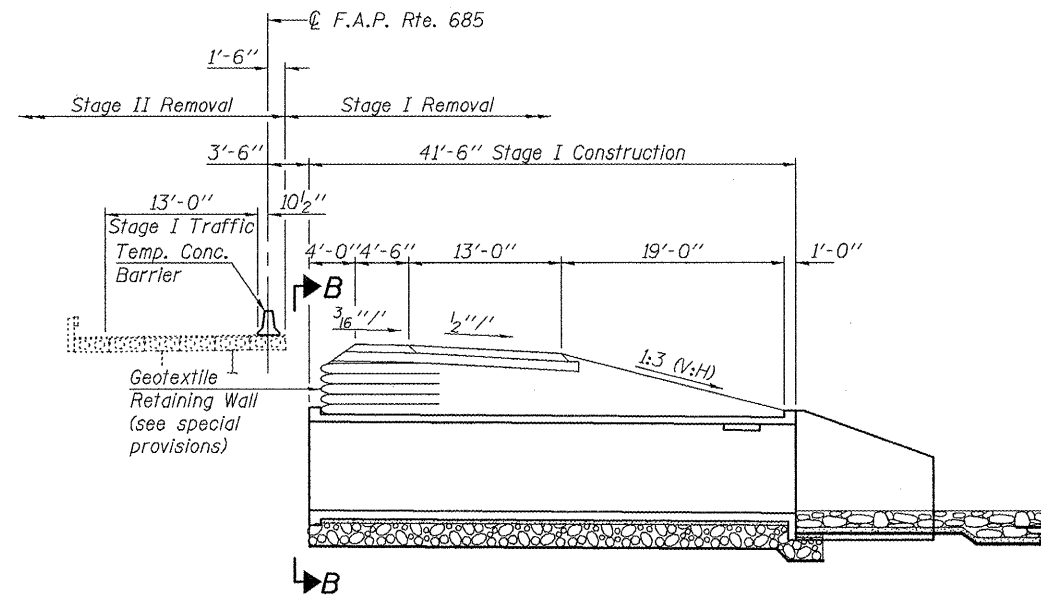


SECTION B-B

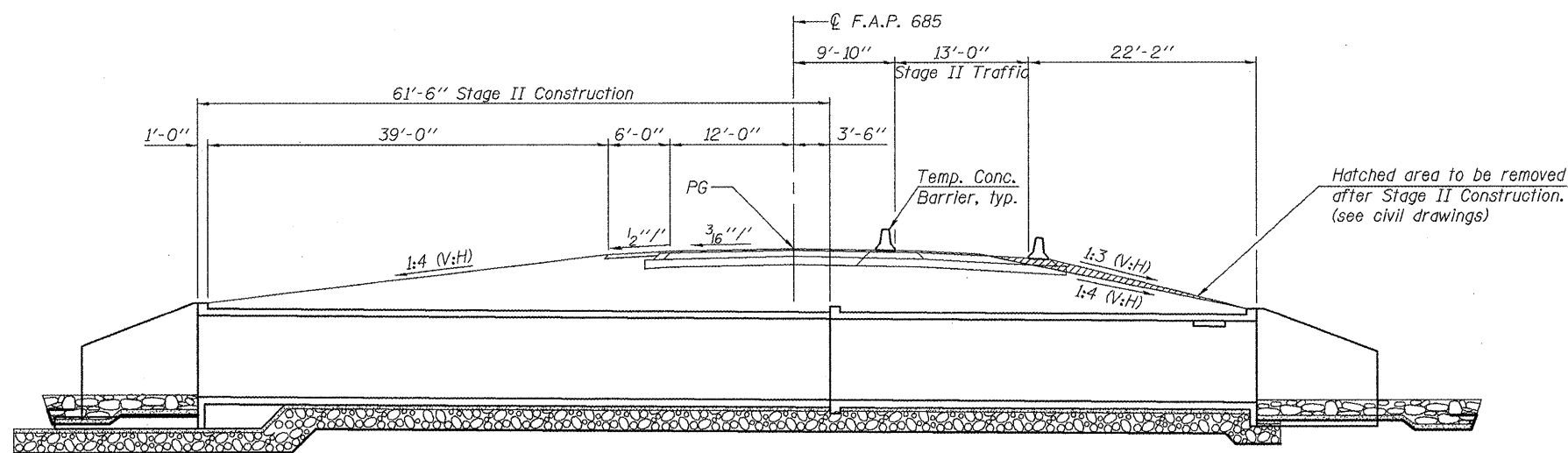


STAGE I SUPERSTRUCTURE REMOVAL

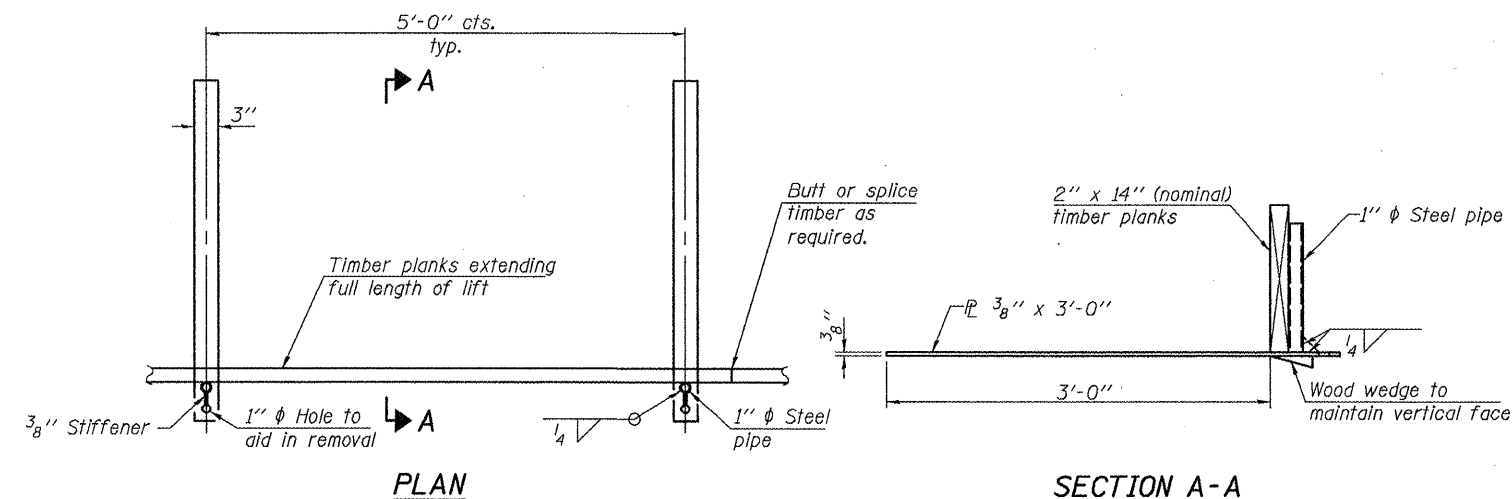


LONGITUDINAL SECTION - STAGE I CONSTRUCTION

Note:
For quantity of Temporary Concrete Barrier, see roadway plans.



LONGITUDINAL SECTION - STAGE II CONSTRUCTION

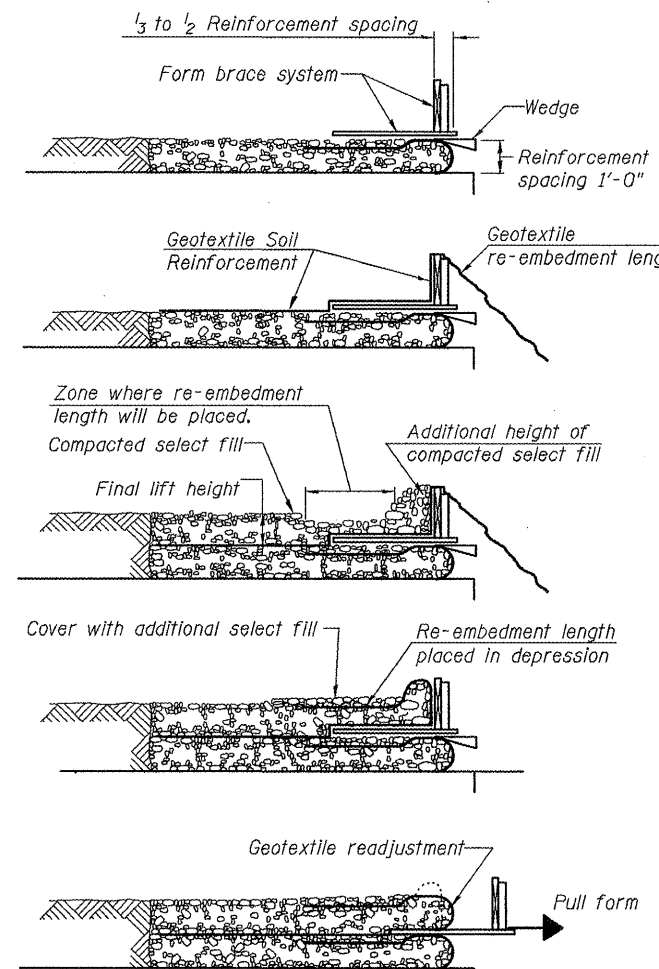


PLAN

SECTION A-A

TEMPORARY GEOTEXTILE FORM BRACE DETAIL

Note:
This is a suggested detail, the Contractor is responsible for the design of the form brace system to be used.



TEMPORARY GEOTEXTILE WALL CONSTRUCTION SEQUENCE

Note: The geotextile soil reinforcement shall have a minimum allowable tensile strength (T min.) of 40 lb./in. as determined by the procedure described in the Special Provision. The computations supporting the determination of (T min.) shall be submitted to the engineer for approval.

FILE NAME = #FILE#



USER NAME = #USER#	DESIGNED - PRD	REVISED -
CHECKED - AWW	REVISED -	
DRAWN - DJW	REVISED -	
CHECKED - AWW	REVISED -	

STATE OF ILLINOIS
DEPARTMENT OF TRANSPORTATION

EXISTING SUBSTRUCTURE STAGING
STRUCTURE NO. 055-2008
SHEET NO. 3 OF 14 SHEETS

F.A.P. RTE. 685	SECTION 118B/BR-1	COUNTY MCDONOUGH	TOTAL SHEETS 43	SHEET NO. 16
			CONTRACT NO. 68662	

ILLINOIS FED. AID PROJECT