

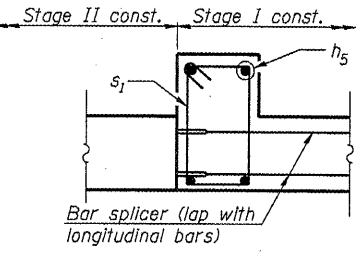
T-type vertical cantilever wingwalls, NE & SW corners

U.S. Invert Elev. 679.10

℄ F.A.P. Rte. 685

1'-0" (Dimension at Rt. L's to ℄ F.A.P. Rte. 685)

Horizontal cantilever wingwalls, NW & SE corners



SECTION M-M

Note: Place h5 bars in addition to a1, as second a3 bars.

ELEVATION

SECTION L-L (at stage construction line)

PLAN

* Measured along centerline of culvert.

NOTES

U.N.O. - Unless Noted Otherwise
 Bars indicated thus 20 x 3-#5 etc. indicates 20 lines of bars with 3 lengths per line.
 A distance of half the wingwall length, but not less than six feet, of the barrel shall be poured monolithically with the wingwalls.

<p>200 West Front Street Wheaton, IL 60187</p>	USER NAME = #USER#	DESIGNED - PRD	REVISED -	STATE OF ILLINOIS DEPARTMENT OF TRANSPORTATION	CULVERT PLAN AND ELEVATION STRUCTURE NO. 055-2008		F.A.P. RTE. 685	SECTION (118B)BR-1	COUNTY MCDONOUGH	TOTAL SHEETS 43	SHEET NO. 21
	PLOT SCALE = 1:8.16667	CHECKED - AWW	REVISED -		SHEET NO. 8 OF 14 SHEETS		CONTRACT NO. 68662		ILLINOIS FED. AID PROJECT		
	PLOT DATE = 1/25/2011	DRAWN - DJW	REVISED -								
		CHECKED - AWW	REVISED -								