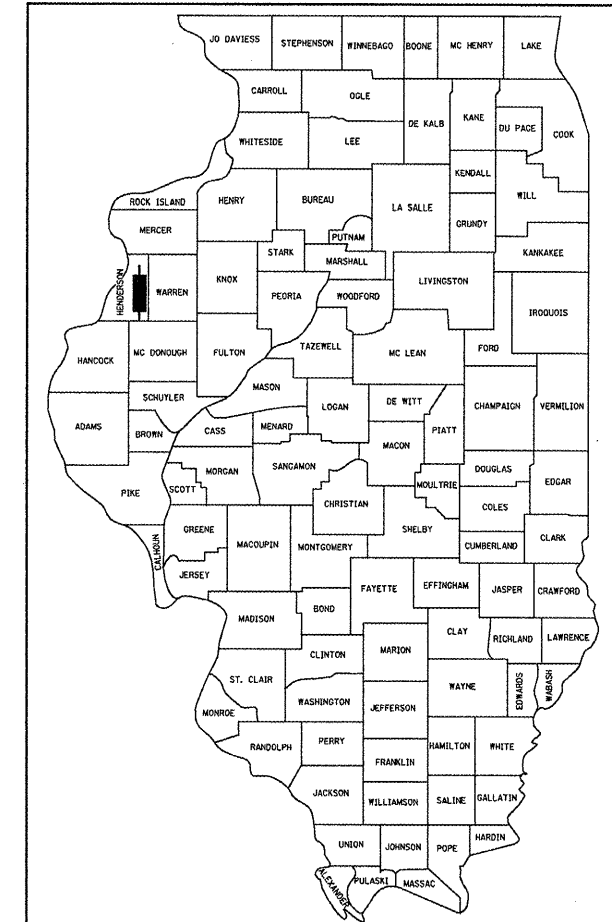


F.A.P. RTE.	SECTION	COUNTY	TOTAL SHEETS	SHEET NO.
534	109BR-1	HENDERSON	56	1
FED. ROAD DIST. NO.	ILLINOIS	CONTRACT NO. 68693		

D-94-022-07



LOCATION OF SECTION INDICATED THUS: - - -

PLANS PREPARED BY

HORNER & SHIFRIN, INC.
ENGINEERS
www.HornerShifrin.com

640 Pierce Boulevard, Suite 200
O'Fallon, Illinois 62269
Phone: (618) 622-3040
Illinois Professional Design Firm
No. 184-000435
License Expires 4/30/2011

STATE OF ILLINOIS
DEPARTMENT OF TRANSPORTATION
DIVISION OF HIGHWAYS

SUBMITTED 12/16/2019

Scott E. Stilt, P.E.
DEPUTY DIRECTOR OF HIGHWAYS, REGION ENGINEER

February 4 2011
Scott E. Stilt, P.E.
actg. ENGINEER OF DESIGN AND ENVIRONMENT

February 4 2011
Christine M. Reed
DIRECTOR OF HIGHWAYS, CHIEF ENGINEER

PRINTED BY THE AUTHORITY OF THE STATE OF ILLINOIS

STATE OF ILLINOIS
DEPARTMENT OF TRANSPORTATION
DIVISION OF HIGHWAYS

**PROPOSED
HIGHWAY PLANS**

FAP ROUTE 534 (IL 94 /IL 116)
SECTION 109BR-1
PROJECT BRF-0534(009)
HENDERSON COUNTY
JOB NO. C-94-025-07

INDEX OF SHEETS

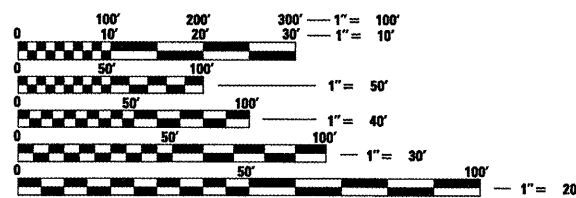
- 1 COVER SHEET
- 2 GENERAL NOTES & COMMITMENTS
- 3-5 SUMMARY OF QUANTITIES
- 6 TYPICAL SECTIONS
- 7-8 SCHEDULES OF QUANTITIES
- 9 ALIGNMENT, TIES, AND BENCHMARKS
- 10-11 PLAN & PROFILE SHEETS
- 12 STAGING DETAILS
- 13 EROSION CONTROL PLAN
- 14-33 STRUCTURE PLANS
- 34-35 DETAILS
- 36-44 CROSS SECTIONS
- 45-56 DISTRICT 4 CADD STANDARDS
HIGHWAY STANDARDS

HIGHWAY STANDARDS

000001-06	630001-09	701201-04
001001-02	630201-06	701306-03
001006	630301-05	701321-11
280001-05	631031-09	701326-04
420001-07	635006-03	701901-01
420401-08	635011-02	704001-06
421001-02	666001-01	720001-01
482011-03	667101-01	780001-02
515001-03	701001-02	781001-03
601101-01	701006-03	701311-03

DESIGN DESIGNATION

MINOR RURAL ARTERIAL
2007 ADT = 1700
S.U. = 4.1%
M.U. = 5.9%



FULL SIZE PLANS HAVE BEEN PREPARED USING STANDARD ENGINEERING SCALES. REDUCED SIZED PLANS WILL NOT CONFORM TO STANDARD SCALES. IN MAKING MEASUREMENTS ON REDUCED PLANS, THE ABOVE SCALES MAY BE USED.

J.U.L.I.E.
JOINT UTILITY LOCATION INFORMATION FOR EXCAVATION
1-800-892-0123
OR 811

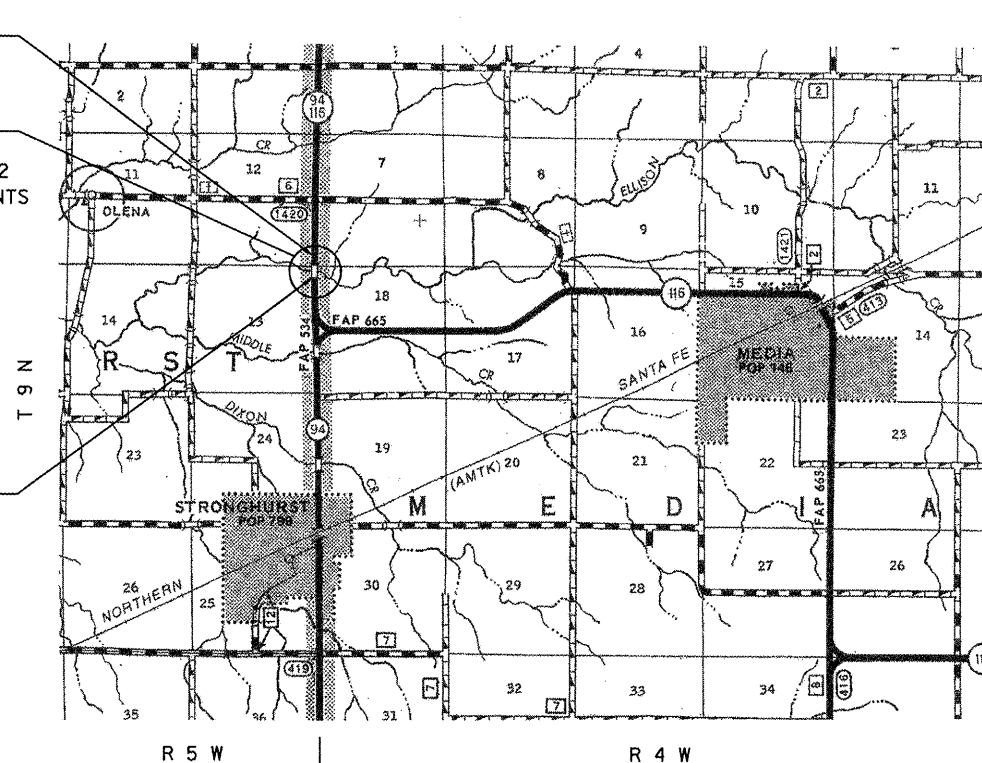
PROJECT ENGINEER: RICH DOTSON (309) 671-3455
PROJECT MANAGER: TERRISA WORSFOLD (309) 671-3465

CONTRACT NO. 68693
CATALOG NO. 033468-00D

BEGIN PROJECT
STA 267+48.82

SN 036-0004 OVER ELLISON CREEK
1.8 MILES NORTH OF STRONGHURST, IL
REMOVE AND REPLACE WITH SN 036-0072
3 SPAN, 112'-0" BACK TO BACK ABUTMENTS
CONCRETE SLAB BRIDGE

END PROJECT
STA 273+80.65



GROSS LENGTH OF PROJECT = 631.83 FT = 0.120 MILES
NET LENGTH OF PROJECT = 631.83 FT = 0.120 MILES



Steven R. Donahue
STEVEN R. DONAHUE, P.E.
License Expires 11/30/2011

12/13/10
Date

USER NAME = sdonahue
LAST SAVED = 12/14/2010
PLOT DATE = 12/13/2010
PLOT TIME = 7:28:51 AM
PLOT SCALE = 28.0000 / IN.
PEN TABLE = V8.tbl
PLOT ORIENT = Horizontal
FILE NAME = J:\2011\11-30\STATY_PLANS\0468693-St-Cover.dgn