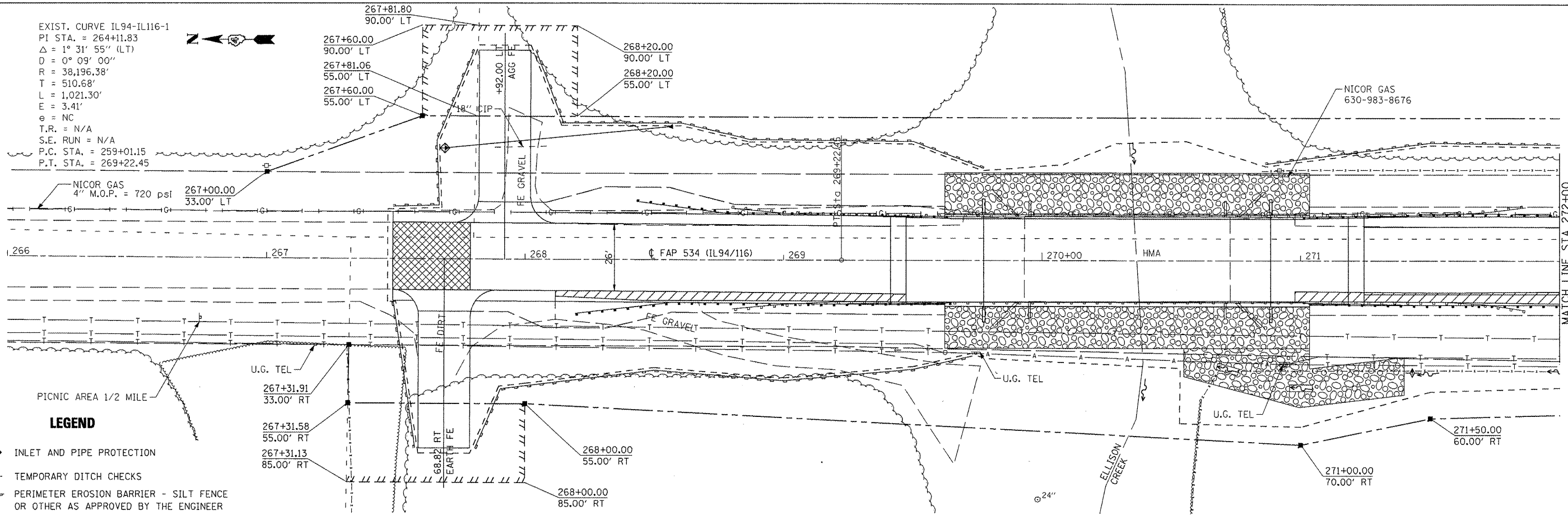
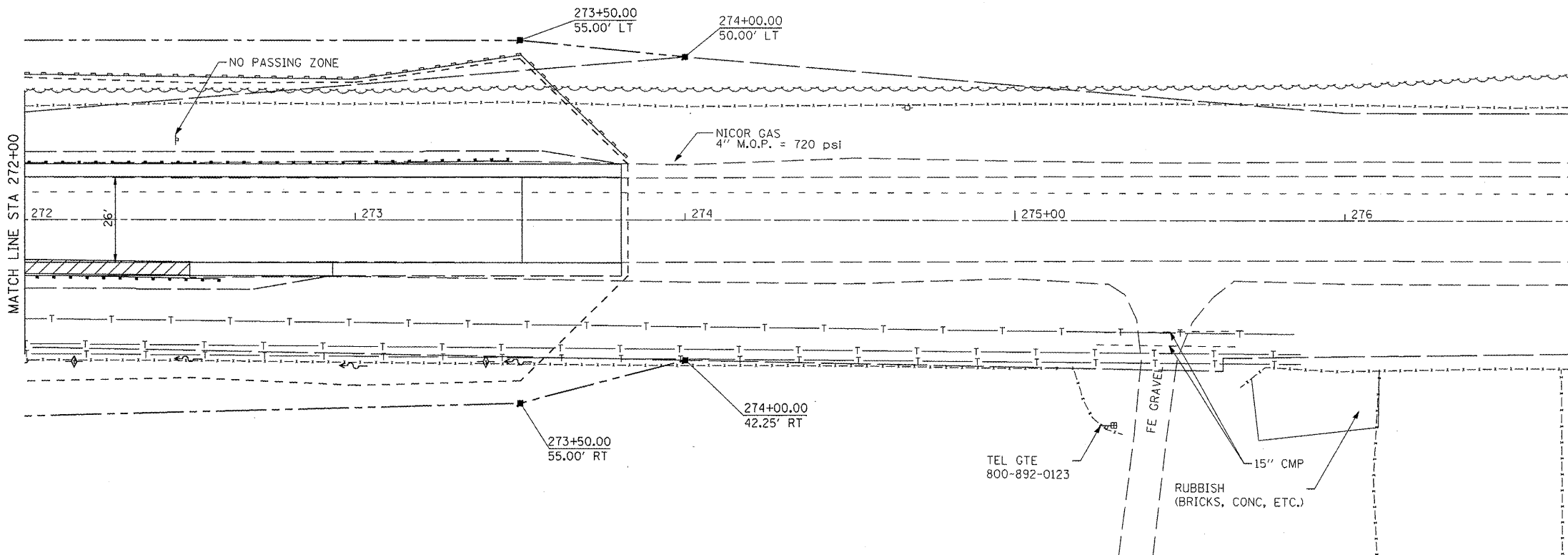


EXIST. CURVE IL94-IL116-1
 PI STA. = 264+11.83
 $\Delta = 1^{\circ} 31' 55''$ (LT)
 $D = 0^{\circ} 09' 00''$
 $R = 38,196.38'$
 $T = 510.68'$
 $L = 1,021.30'$
 $E = 3.41'$
 $\theta = NC$
 T.R. = N/A
 S.E. RUN = N/A
 P.C. STA. = 259+01.15
 P.T. STA. = 269+22.45



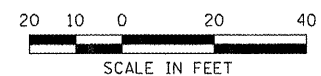
LEGEND

- ◆ INLET AND PIPE PROTECTION
- ◆ TEMPORARY DITCH CHECKS
- PERIMETER EROSION BARRIER - SILT FENCE OR OTHER AS APPROVED BY THE ENGINEER



LEGEND

- ◆ INLET AND PIPE PROTECTION
- ◆ TEMPORARY DITCH CHECKS
- PERIMETER EROSION BARRIER - SILT FENCE OR OTHER AS APPROVED BY THE ENGINEER



LAST SAVED = 12/14/2018 10:20:53 AM
 PEN TABLE = V8-Half.tbl
 PLOT DRIVER = TR-V8pdf-Black-Half.plt

FILE NAME =	USER NAME = beriechmann	DESIGNED -	REVISED -
h:\08044\1194\road\plans\0468693-Sht	Pros.dgn	DRAWN -	REVISED -
	PLOT SCALE = 40.0018' / IN.	CHECKED -	REVISED -
	PLOT DATE = 12/16/2018 10:20:53 AM	DATE -	REVISED -

**STATE OF ILLINOIS
 DEPARTMENT OF TRANSPORTATION**

**HORNER &
 SHERIN, INC.
 ENGINEERS**

EROSION CONTROL PLAN
 IL 94/IL 116

SCALE: 1" = 20'

SHEET NO. 1 OF 1 SHEETS STA. TO STA.

F.A.P. RTE.	SECTION	COUNTY	TOTAL SHEETS	SHEET NO.
534	109BR-1	HENDERSON	56	13
IL 94/116 OVER ELLISON CREEK			CONTRACT NO. 68693	
ILLINOIS FED. AID PROJECT				