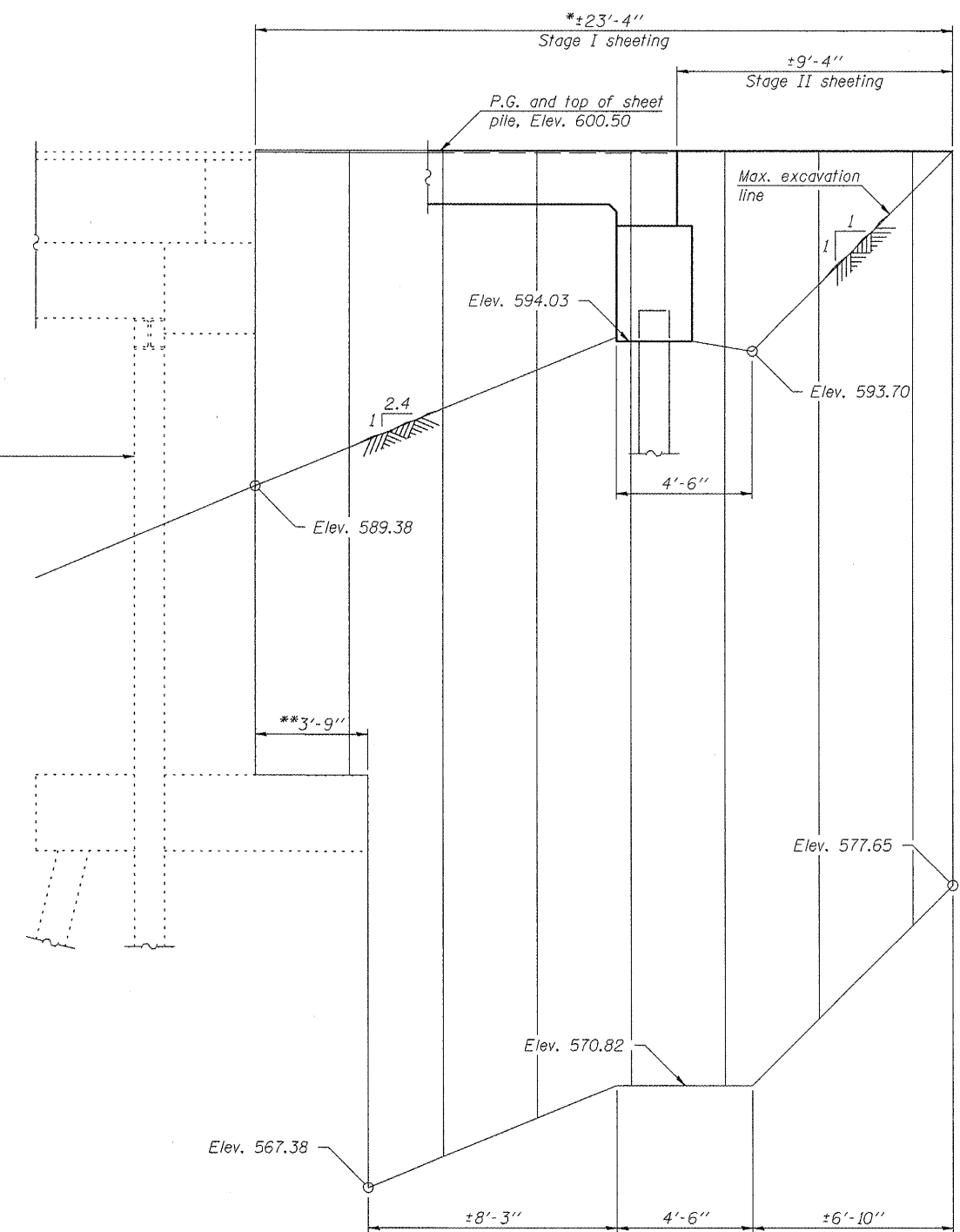


**TEMPORARY SHEET PILING
AT NORTH ABUTMENT**



**TEMPORARY SHEET PILING
AT SOUTH ABUTMENT**

Limits of
Structure Removal

Notes:
 If the Contractor chooses to alter the temporary cantilevered sheet piling design requirements shown on the plans, a design submittal including plan details and calculations will be required for review and acceptance by the Engineer.
 * The Contractor shall connect the first sheet to the existing abutment wall to ensure stability of sheets driven to the top of the existing footing. This connection shall be reviewed and accepted by the Engineer and included in the cost for Temporary Sheet Piling.
 ** Stage I sheeting in this portion shall be driven to top of existing footing.

SHEET PILE DATA
 Minimum Section Modulus= 30.0 in.³/ft.
 fy= 38.5 ksi

FILE NAME =	USER NAME = elagemann	DESIGNED KAK	REVISED -
1:\08044\1\94\Cad\1\Plans\0360072-68693.dgn		CHECKED EML	REVISED -
PLOT SCALE =		DRAWN KAK	REVISED -
PLOT DATE = 12/16/2010		CHECKED EML	REVISED -

**STATE OF ILLINOIS
DEPARTMENT OF TRANSPORTATION**



**TEMPORARY SHEET PILING
STRUCTURE NO. 036-0072**

SHEET NO. 3 OF 20 SHEETS

F.A.P. RTE. 534	SECTION 109BR-1	COUNTY HENDERSON	TOTAL SHEETS 56	SHEET NO. 16
ILLINOIS FED. AID PROJECT			CONTRACT NO. 68693	