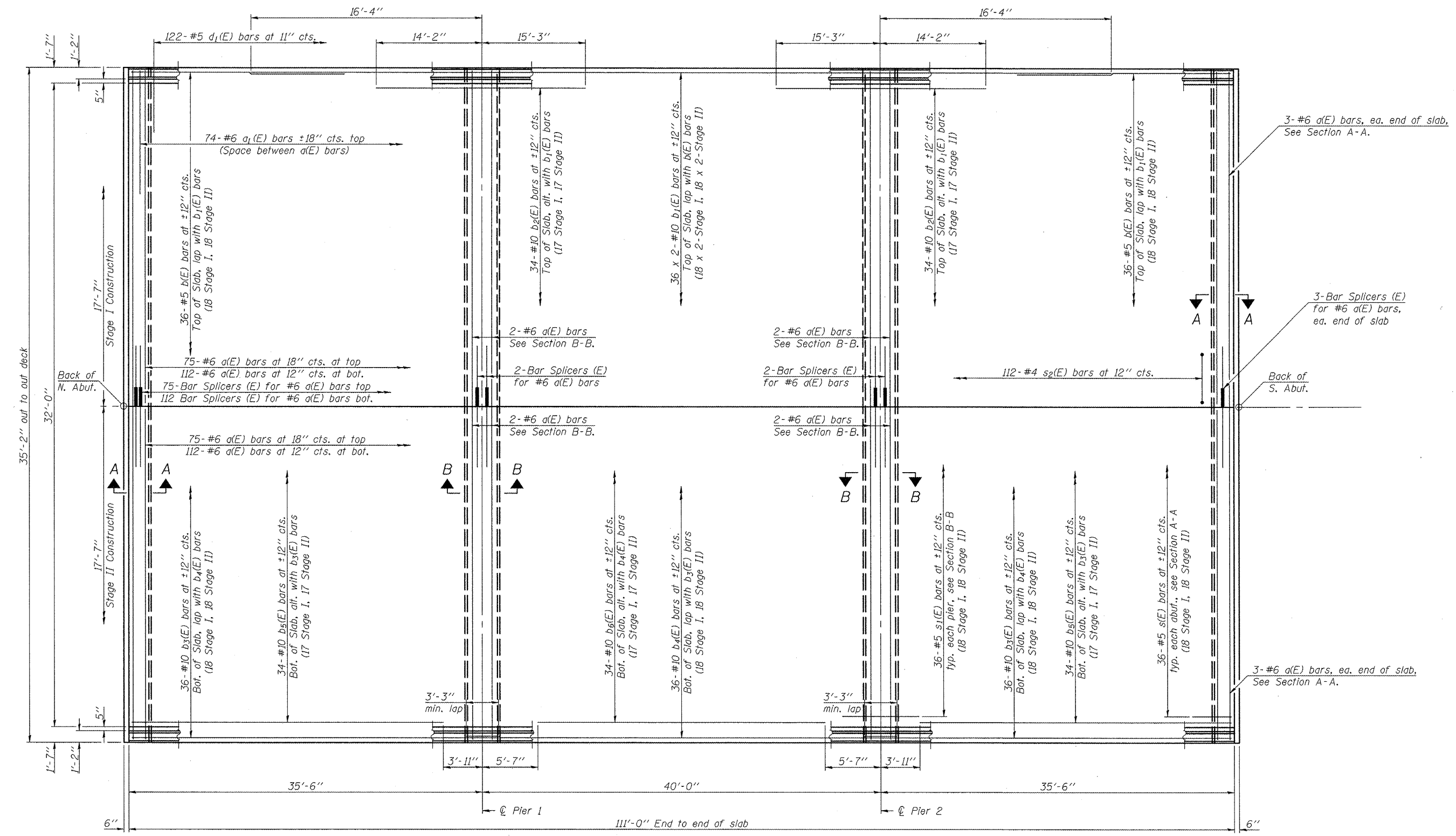
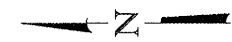


MINIMUM BAR LAP

#10 top bars = 9'-5"

Notes:
 For Sections A-A and B-B, see sheet 7 of 20.
 For bar bending diagrams and Bill of Materials, see sheet 8 of 20.
 Bars indicated thus 36 x 2-#10 etc. indicates 36 lines of bars with 2 lengths per line.



PLAN

FILE NAME =	USER NAME = elegenenn	DESIGNED KAK	REVISED -
11:\08044\1L94\Cad\SV_Plans\0360072-68693.dgn		CHECKED EML	REVISED -
		DRAWN KAK	REVISED -
		CHECKED EML	REVISED -
	PLOT SCALE =		
	PLOT DATE = 12/16/2010		

**STATE OF ILLINOIS
 DEPARTMENT OF TRANSPORTATION**



**SUPERSTRUCTURE DETAILS
 STRUCTURE NO. 036-0072**

SHEET NO. 6 OF 20 SHEETS

F.A.P. RTE.	SECTION	COUNTY	TOTAL SHEETS	SHEET NO.
534	109BR-1	HENDERSON	56	19
CONTRACT NO. 68693			ILLINOIS FED. AID PROJECT	