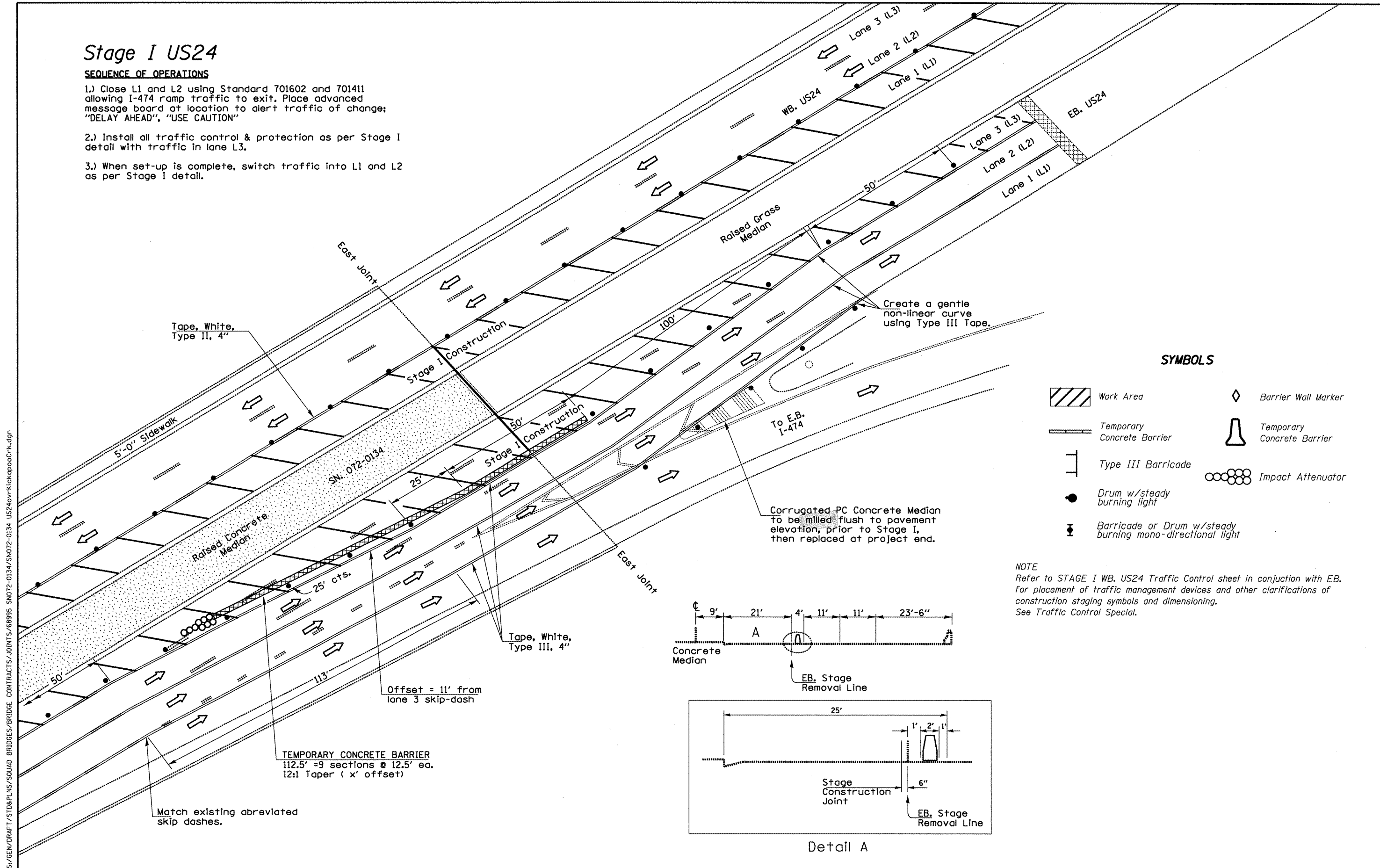


Stage I US24

SEQUENCE OF OPERATIONS

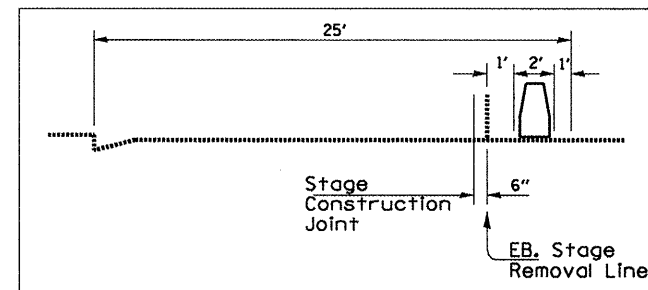
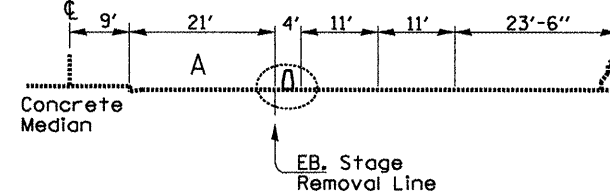
- 1.) Close L1 and L2 using Standard 701602 and 701411 allowing I-474 ramp traffic to exit. Place advanced message board at location to alert traffic of change; "DELAY AHEAD", "USE CAUTION"
- 2.) Install all traffic control & protection as per Stage I detail with traffic in lane L3.
- 3.) When set-up is complete, switch traffic into L1 and L2 as per Stage I detail.



SYMBOLS

- Work Area
- Barrier Wall Marker
- Temporary Concrete Barrier
- Temporary Concrete Barrier
- Type III Barricade
- Drum w/steady burning light
- Barricade or Drum w/steady burning mono-directional light
- Impact Attenuator

NOTE
Refer to STAGE I WB. US24 Traffic Control sheet in conjunction with EB. for placement of traffic management devices and other clarifications of construction staging symbols and dimensioning. See Traffic Control Special.



Detail A

S:\GEN\DRAW\STD&PLNS\SQUAD BRIDGES\BRIDGE CONTRACTS\JOINTS\68995 SN072-0134\SN072-0134 US24vrvKickapooCrk.dgn

FILE NAME = SN072-0134 US24vrvKickapooCrk.dgn	USER NAME = jonesce	DESIGNED - D HOFFMAN	REVISED -
		DRAWN - C JONES	REVISED -
		CHECKED -	REVISED -
		DATE - 12/30/2010	REVISED -
PLOT SCALE = 1/83.7851" / IN.			
PLOT DATE = 1/14/2011			

**STATE OF ILLINOIS
DEPARTMENT OF TRANSPORTATION**

**TRAFFIC CONTROL
STRUCTURE NO. 072-0134**

SCALE: _____ SHEET NO. ____ OF ____ SHEETS STA. _____ TO STA. _____

F.A.P. RTE.	SECTION	COUNTY	TOTAL SHEETS	SHEET NO.
317	(48B)1-1	PEORIA	26	9
N.Abut. Rehab. Brgs./Jt. Repl.		CONTRACT NO. 68995		
ILLINOIS FED. AID PROJECT				