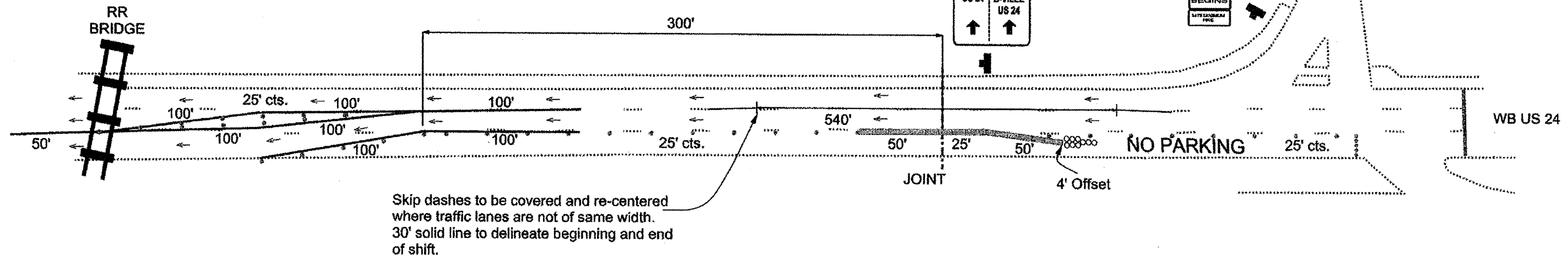


Stage 1- Westbound US 24

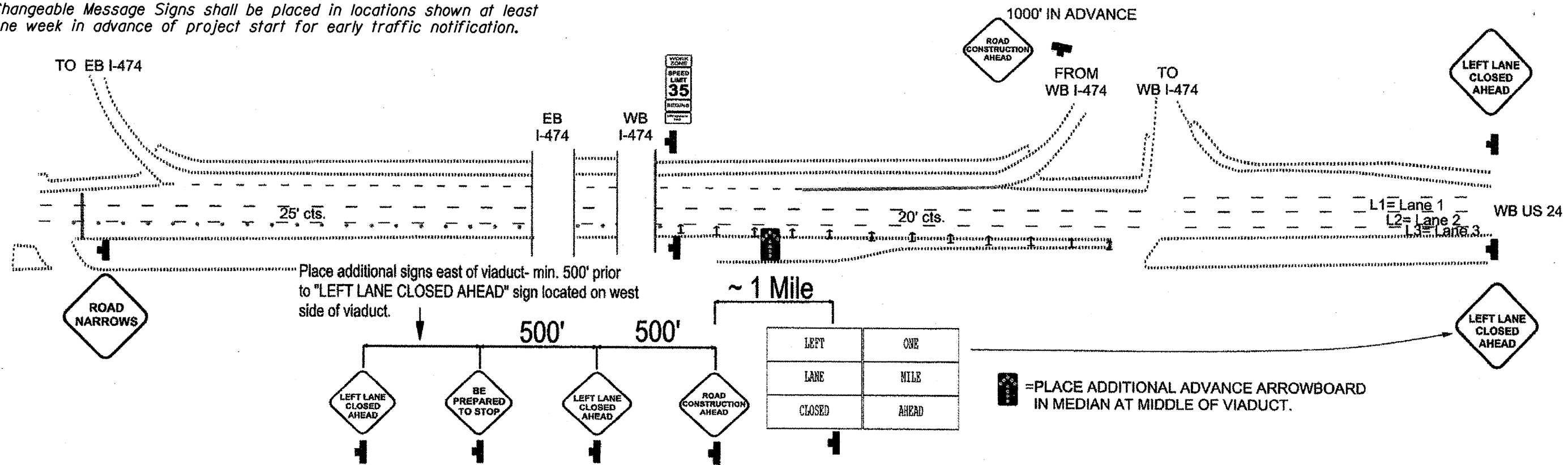
General Notes

- Pavement Marking Tape Type III-4" White- 870 ft
- Pavement Marking Tape Type III-6" Black- 60 ft
- Work Zone Pavement Marking Removal- 290 sq ft
- Temporary Concrete Barrier-125 ft
- Attenuator - Test Level 2 NRD- 1
- Changeable Message Board-1
- Arrow Board- 2

Delineation devices shall be lit with mono-directional lights at centers shown.
 Type III 6" Black Tape shall be acceptable for temporarily covering conflicting markings.
 Traffic control shall be as shown and shall be paid as TRAFFIC CONTROL AND PROTECTION (SPECIAL) unless covered by specific pay items.



NOTES:
 Changeable Message Signs shall be placed in locations shown at least one week in advance of project start for early traffic notification.



= PLACE ADDITIONAL ADVANCE ARROWBOARD IN MEDIAN AT MIDDLE OF VIADUCT.

S:\GEN\DRAWING\STDA\PLANS\SOUAD BRIDGES\BRIDGE CONTRACTS\JOINTS\SN072-0134\SN072-0134 US24vrvkicakpooCrk.dgn

FILE NAME = SN072-0134 US24vrvkicakpooCrk.dgn	USER NAME = jonesce	DESIGNED - D. HOFFMAN	REVISED -	STATE OF ILLINOIS DEPARTMENT OF TRANSPORTATION	TRAFFIC CONTROL STRUCTURE NO. 072-0134		F.A.P. RTE. 317	SECTION (48B)I-1	COUNTY PEORIA	TOTAL SHEETS 26	SHEET NO. 12
PLOT SCALE = 1/83.7051" / IN.	CHECKED -	DATE - 12/30/2010	REVISED -		SCALE: _____	SHEET NO. _____ OF _____ SHEETS	STA. _____ TO STA. _____	N.Abut. Rehab. Brgs./Jt. Repl.		CONTRACT NO. 68995	
PLOT DATE = 1/11/2011	DATE -	REVISED -	REVISED -						ILLINOIS FED. AID PROJECT		