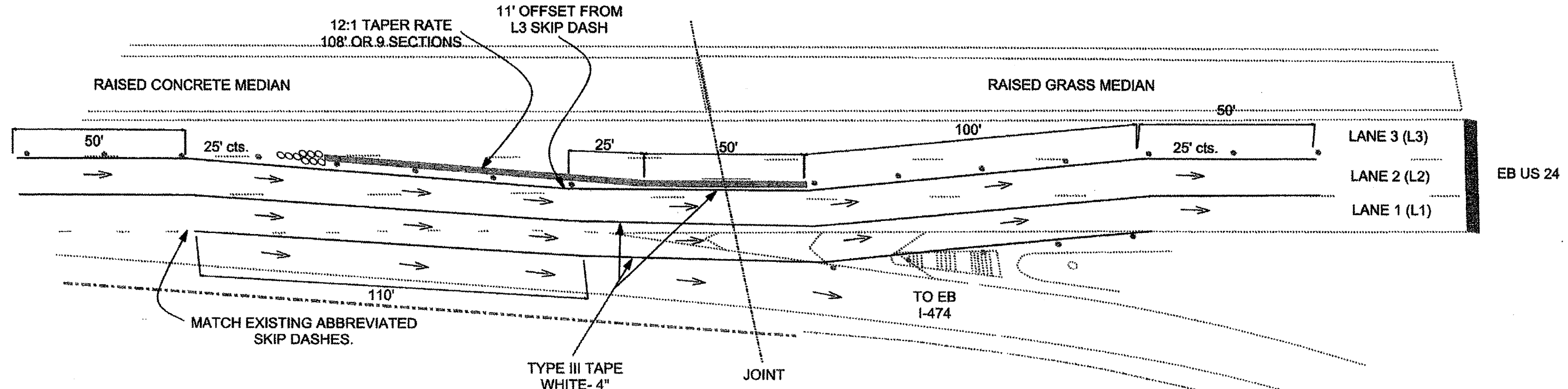
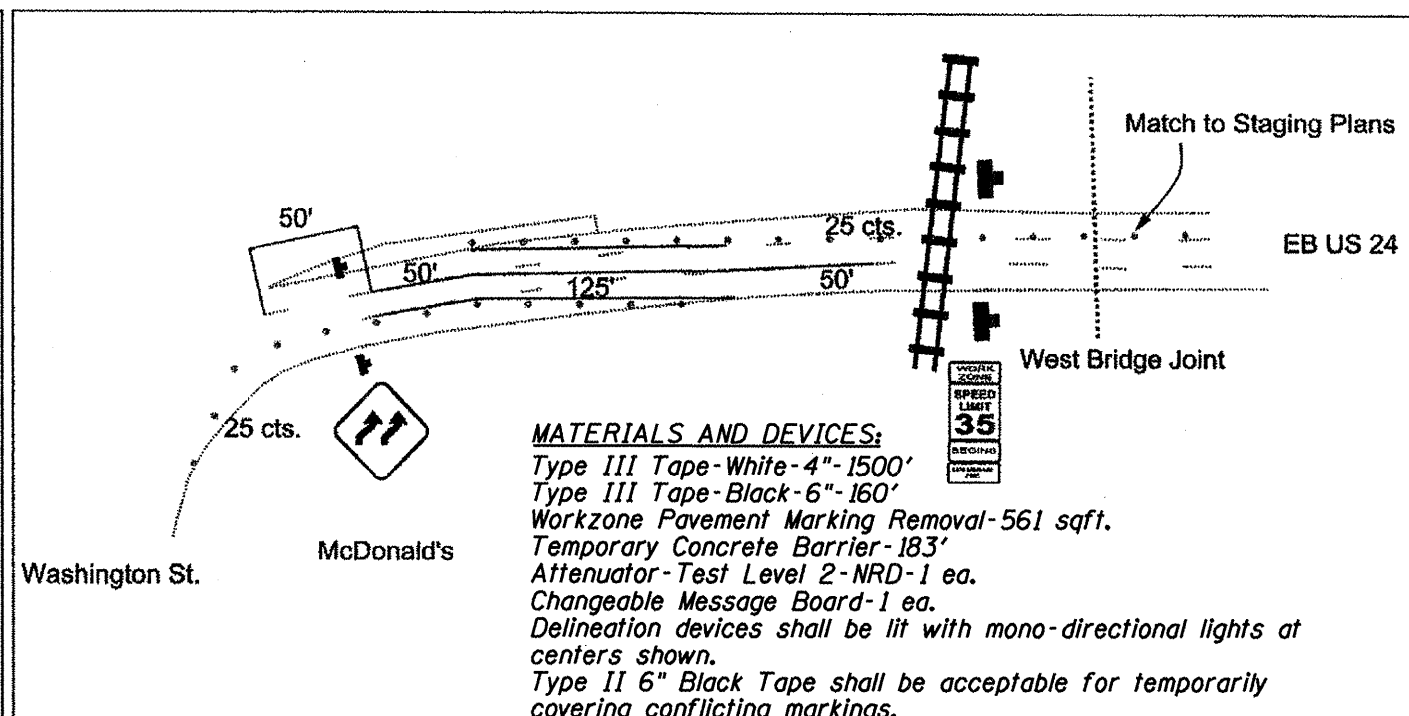
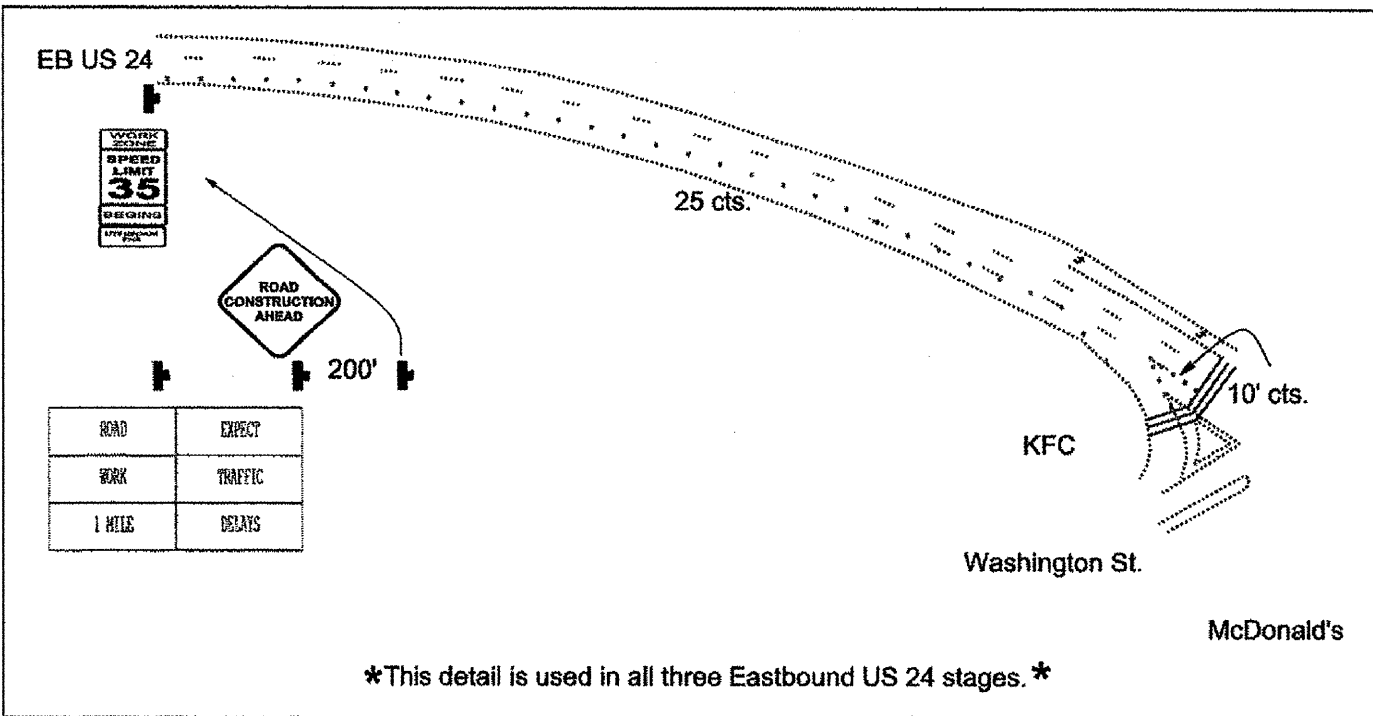


Stage 1- Eastbound US 24



NOTES:
Changeable Message Signs shall be placed in locations shown at least one week in advance of project start for early traffic notifications.



S:\GEN\DRIFT\STD&PLNS\SQUAD BRIDGES\BRIDGE CONTRACTS\JOINTS\68995 SN072-0134\SN072-0134 US24evrKicpooCrk.dgn

FILE NAME = SN072-0134 US24evrKicpooCrk.dgn	USER NAME = jonesce	DESIGNED - D. HOFFMAN	REVISED -	STATE OF ILLINOIS DEPARTMENT OF TRANSPORTATION	TRAFFIC CONTROL STRUCTURE NO. 072-0134			F.A.P. RTE. 317	SECTION (488)1-1	COUNTY PEORIA	TOTAL SHEETS 26	SHEET NO. 15
	PLOT SCALE = 1/8" = 1' IN.	DRAWN - D. HOFFMAN	REVISED -		SCALE: _____	SHEET NO. _____ OF _____ SHEETS	STA. _____ TO STA. _____	CONTRACT NO. 68995				
	PLOT DATE = 1/14/2011	CHECKED -	REVISED -		ILLINOIS FED. AID PROJECT							
		DATE - 12/30/2010	REVISED -									