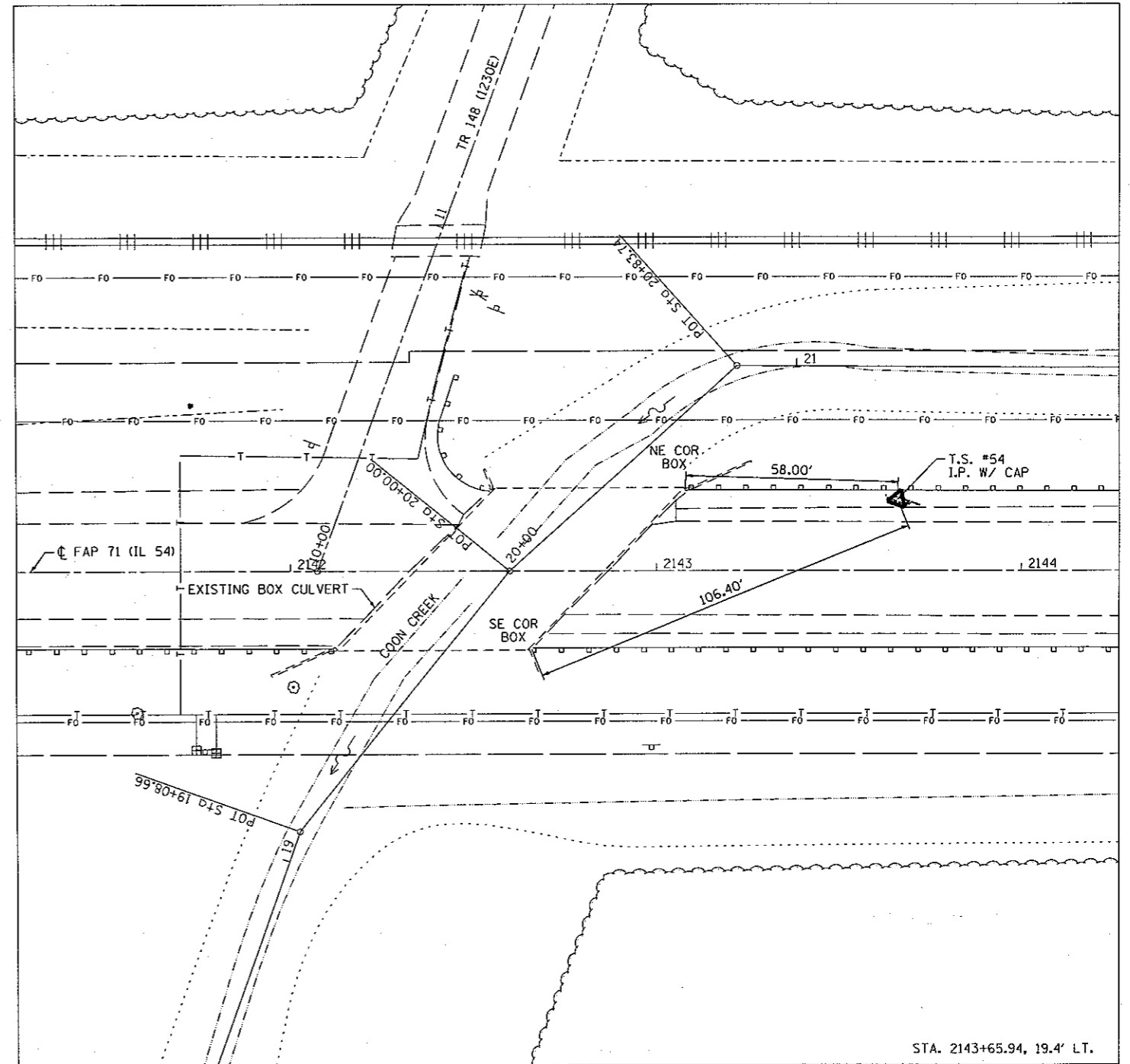
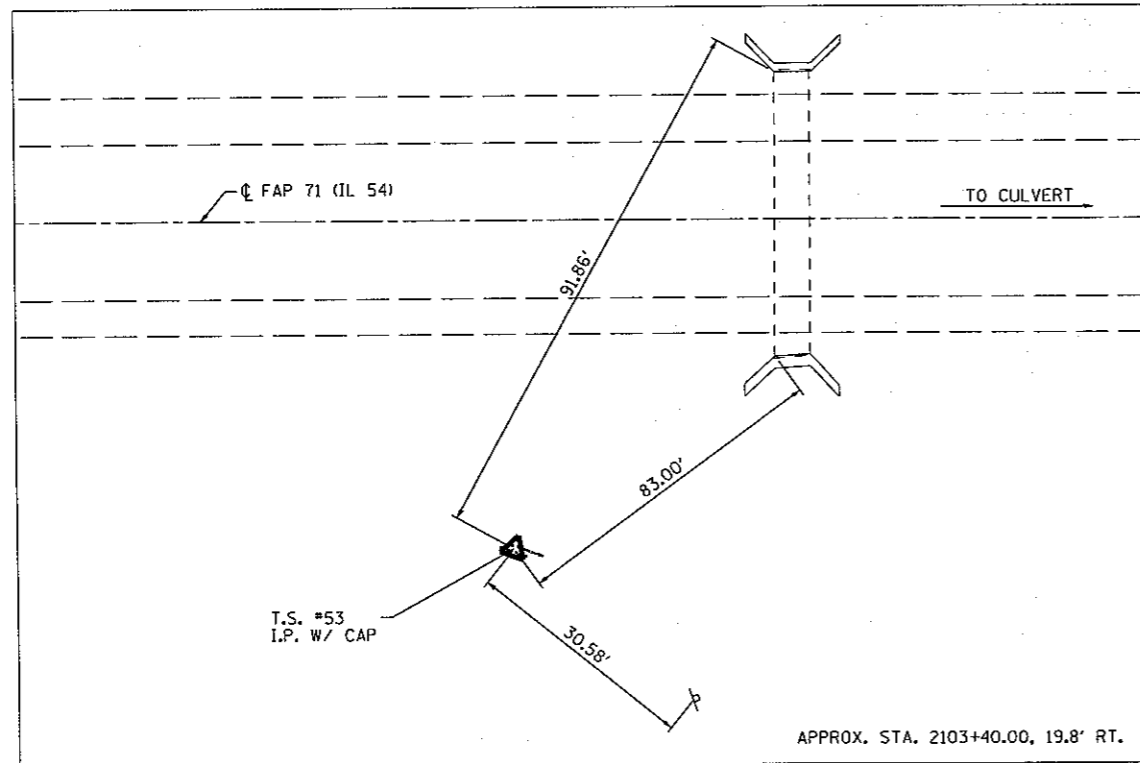


BENCHMARK INFORMATION:

BM B: CHISELED SQUARE ON
SW CORNER OF BOX CULVERT
OVER COON CREEK,
STA. 2142+11.63, 21.82' RT. ELEV. = 729.62

| HORIZONTAL CONTROL POINTS | | | | | | |
|---------------------------|------------|-----------|-------|------------|----------|-------------------|
| POINT | NORTH | EAST | CHAIN | STATION | OFFSET | DESCRIPTION |
| 53 | 1273151.74 | 819034.42 | N/A | 2130+40 | 19.8' RT | IRON PIN WITH CAP |
| 54 | 1274531.97 | 822818.63 | IL54 | 2143+65.94 | 19.4' LT | IRON PIN WITH CAP |



FILE NAME =
0570271-sht-ATB.dgn

USER NAME = vllavis
PLOT SCALE = 40.0000' / IN.
PLOT DATE = 12/1/2010 12:13:55 PM

DESIGNED - JDS
DRAWN - WLL
CHECKED - RJA
DATE -

REVISED -
REVISED -
REVISED -
REVISED -

**STATE OF ILLINOIS
DEPARTMENT OF TRANSPORTATION**

**IL 54 OVER COON CREEK
ALIGNMENT, TIES AND BENCHMARKS**

SCALE: SHEET NO. OF SHEETS STA. TO STA.

| F.A.P. RTE. | SECTION | COUNTY | TOTAL SHEETS | SHEET NO. |
|-------------|------------|--------|--------------|-----------|
| 71 | (15B-1)B-1 | DEWITT | 76 | 8 |

CONTRACT NO. 70271
ILLINOIS FED. AID PROJECT