

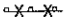
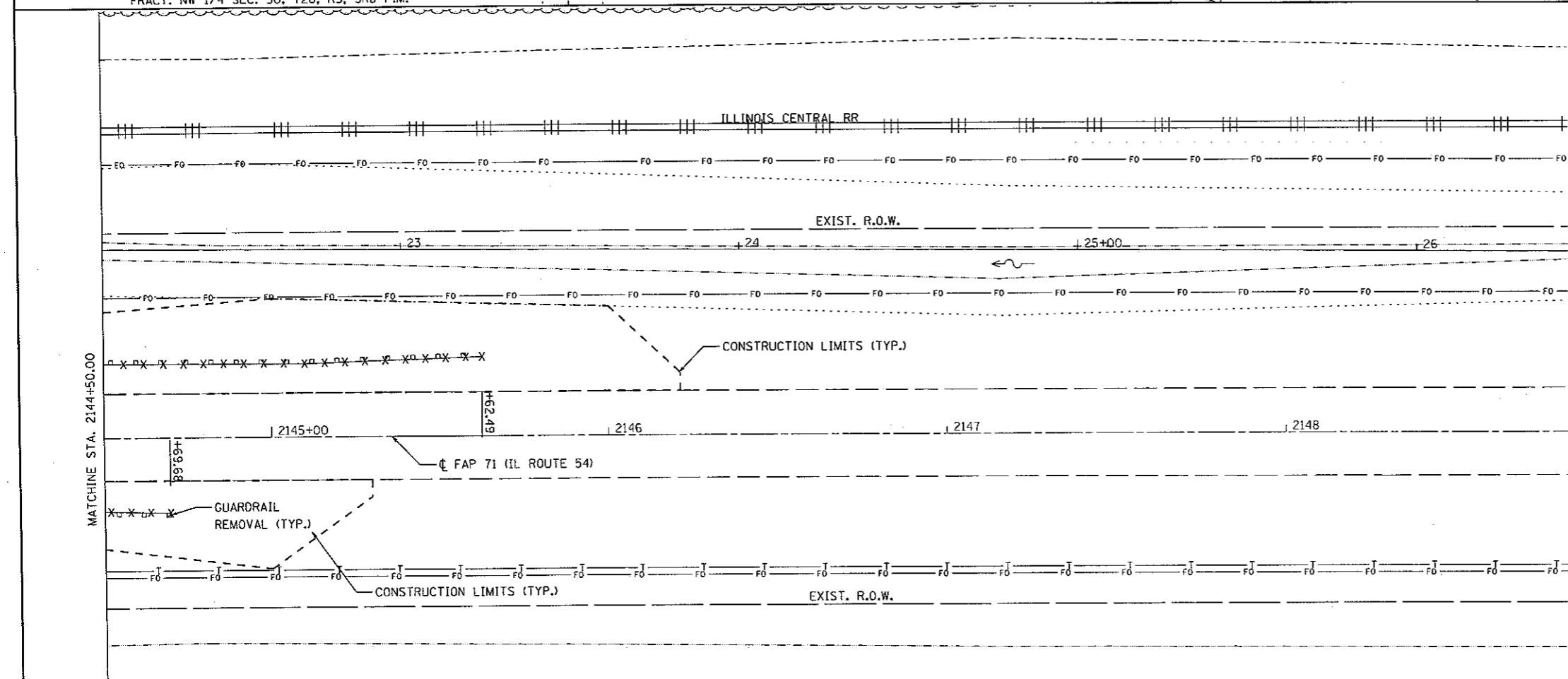
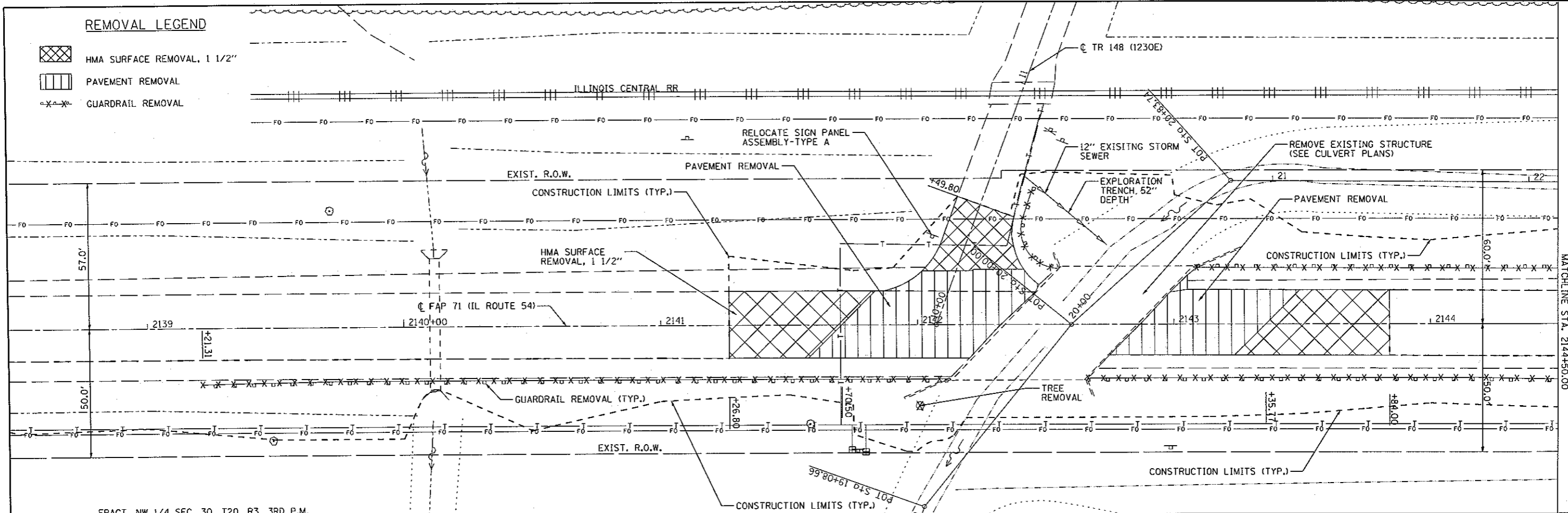
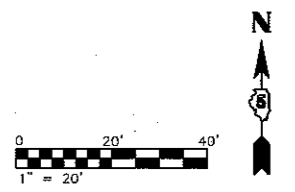


**REMOVAL LEGEND**

-  HMA SURFACE REMOVAL, 1 1/2"
-  PAVEMENT REMOVAL
-  GUARDRAIL REMOVAL



- NOTE:**
1. SEE PLAN AND PROFILE - RUNAROUND SHEETS 13-15 FOR RUNAROUND REMOVAL ITEMS INCLUDING TREE REMOVAL, ACRES LIMITS.
  2. THE REMOVAL OF THE EXISTING PAVEMENT ABOVE THE EXISTING CULVERT IS INCLUDED IN THE COST OF REMOVAL OF EXISTING STRUCTURES FOR THE EXISTING CULVERT REMOVAL.



FILE NAME = 0570271-sht-rem.DGN	USER NAME = wlewis	DESIGNED - JDS	REVISED -	<b>STATE OF ILLINOIS DEPARTMENT OF TRANSPORTATION</b>	<b>IL 54 OVER COON CREEK REMOVAL PLAN</b>	F.A.P. RTE. 71	SECTION (158-1)BR-1	COUNTY DEWITT	TOTAL SHEETS 76	SHEET NO. 10		
PLOT SCALE = 40.0000' / IN.		CHECKED - RJA	REVISED -			SCALE:	SHEET NO. OF SHEETS	STA. TO STA.	CONTRACT NO. 70271			
PLOT DATE = 12/17/2010 12:05:19 PM		DATE -	REVISED -			ILLINOIS FED. AID PROJECT						
...D570271-sht-rem.DGN 12/17/2010 12:16:19 PM												