


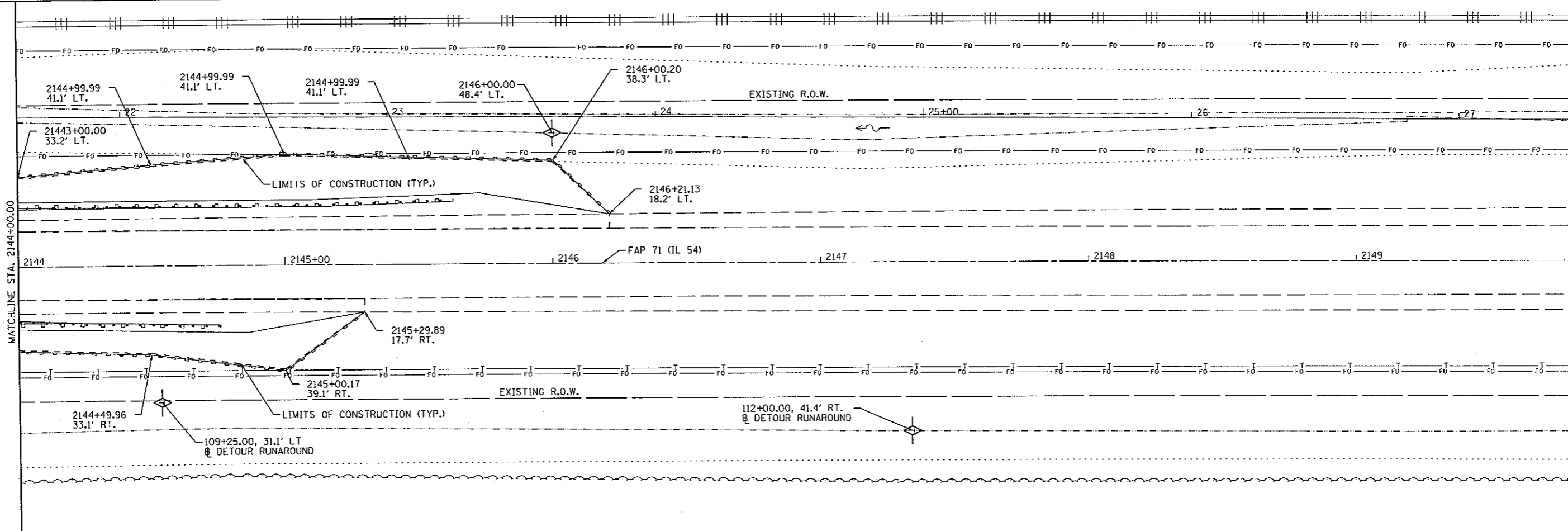
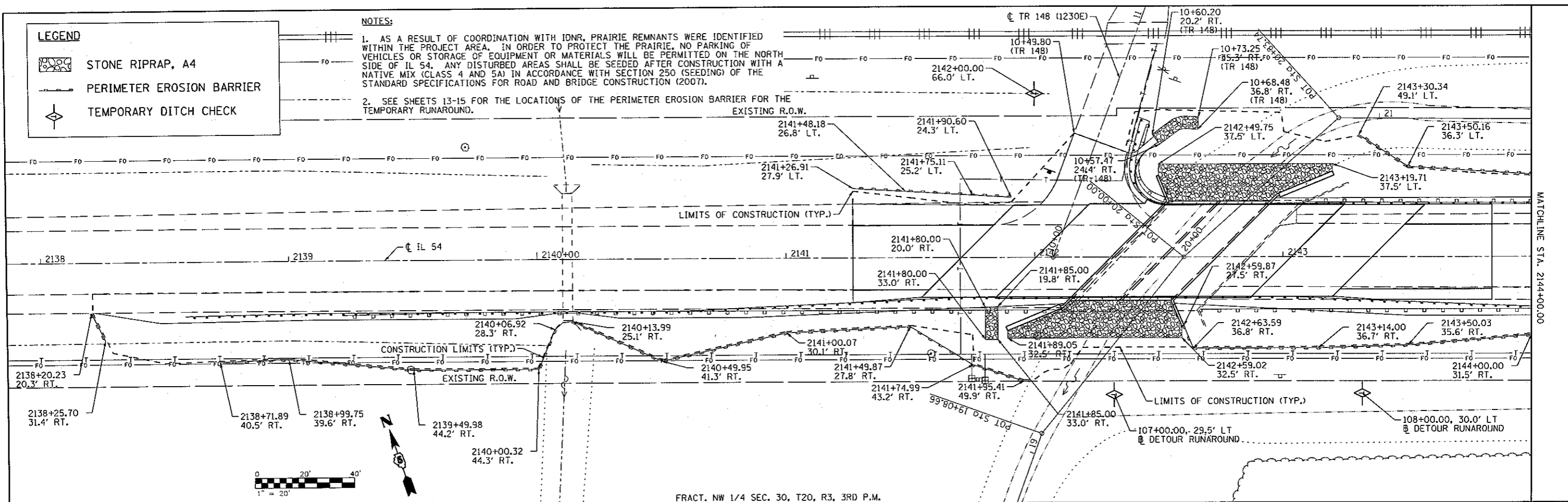


LEGEND

-  STONE RIPRAP, A4
-  PERIMETER EROSION BARRIER
-  TEMPORARY DITCH CHECK

NOTES:

- AS A RESULT OF COORDINATION WITH IDNR, PRAIRIE REMNANTS WERE IDENTIFIED WITHIN THE PROJECT AREA. IN ORDER TO PROTECT THE PRAIRIE, NO PARKING OF VEHICLES OR STORAGE OF EQUIPMENT OR MATERIALS WILL BE PERMITTED ON THE NORTH SIDE OF IL 54. ANY DISTURBED AREAS SHALL BE SEEDED AFTER CONSTRUCTION WITH A NATIVE MIX (CLASS 4 AND 5A) IN ACCORDANCE WITH SECTION 250 (SEEDING) OF THE STANDARD SPECIFICATIONS FOR ROAD AND BRIDGE CONSTRUCTION (2007).
- SEE SHEETS 13-15 FOR THE LOCATIONS OF THE PERIMETER EROSION BARRIER FOR THE TEMPORARY RUNAROUND.



FILE NAME = D570271-sht-eros.DGN

USER NAME = williams	DESIGNED - JDS	REVISED -
PLOT SCALE = 40.0000' / IN.	DRAWN - WLL	REVISED -
PLOT DATE = 12/1/2010 12:20:44 PM	CHECKED - RJA	REVISED -
	DATE -	REVISED -

**STATE OF ILLINOIS
DEPARTMENT OF TRANSPORTATION**

**IL 54 OVER COON CREEK
EROSION CONTROL PLAN**

SCALE: SHEET NO. OF SHEETS STA. TO STA.

F.A.P. RTE. 71	SECTION (15B-118R-1)	COUNTY DEWITT	TOTAL SHEETS 76	SHEET NO. 22
CONTRACT NO. 70271			ILLINOIS FED. AID PROJECT	