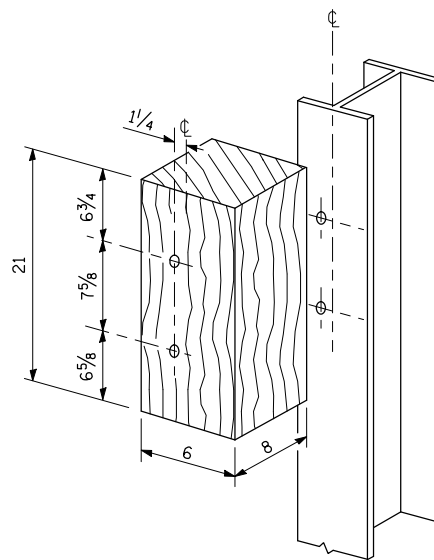
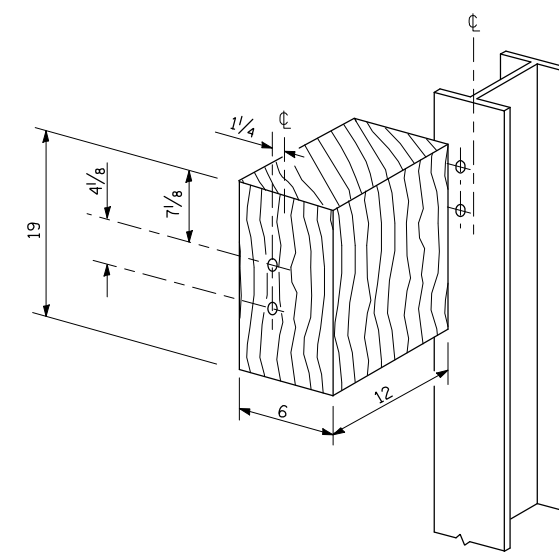


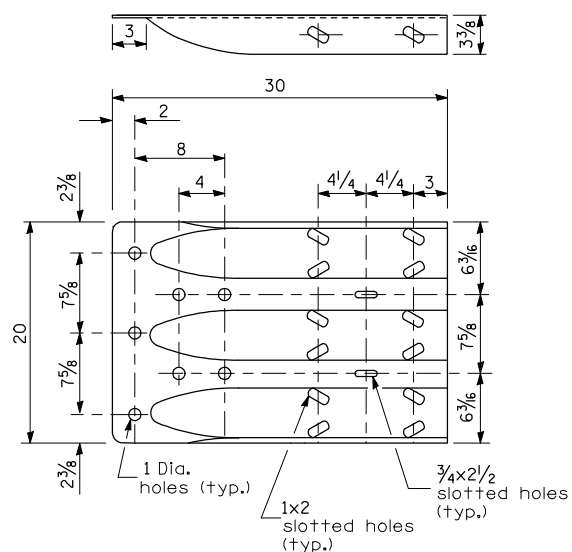
SECTION C-C



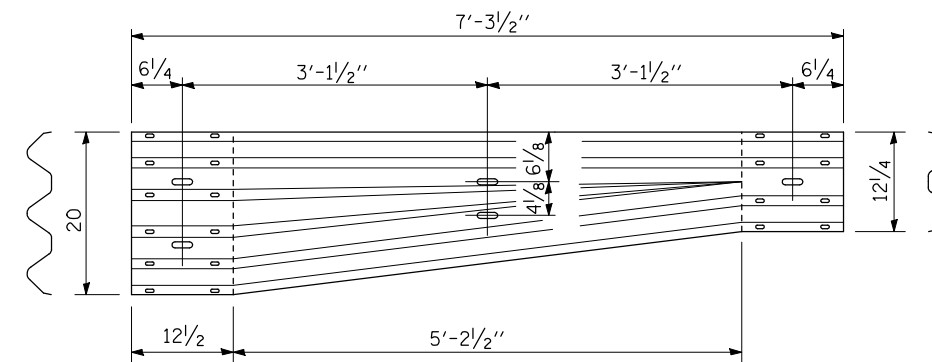
POSTS 1-11 WOOD BLOCKOUT DETAIL



POST 12 WOOD BLOCKOUT DETAIL  
(See Standard 630001 for post 13 blockouts.)



MODIFIED THRIE BEAM END SHOE DETAIL



TRANSITION SECTION  
(10 gauge rail element)

FILE NAME =	USER NAME = bowerml	DESIGNED - JDS	REVISED -	<b>STATE OF ILLINOIS DEPARTMENT OF TRANSPORTATION</b>	<b>IL 54 OVER COON CREEK TRAFFIC BARRIER TERMINAL, TYPE 6A (SPECIAL) DETAIL</b>	F.A.P. RTE.	SECTION	COUNTY	TOTAL SHEETS	SHEET NO.	
#FILES#		DRAWN - WLL	REVISED -			71	(15B-1)BR-1	DEWITT	76	25	
	PLOT SCALE = 2.0000' / IN.	CHECKED - RJA	REVISED -			CONTRACT NO. 70271					
	PLOT DATE = 12/9/2010 *TIME#	DATE -	REVISED -			ILLINOIS FED. AID PROJECT					
				SCALE:		SHEET NO. 2 OF 3 SHEETS		STA.		TO STA.	