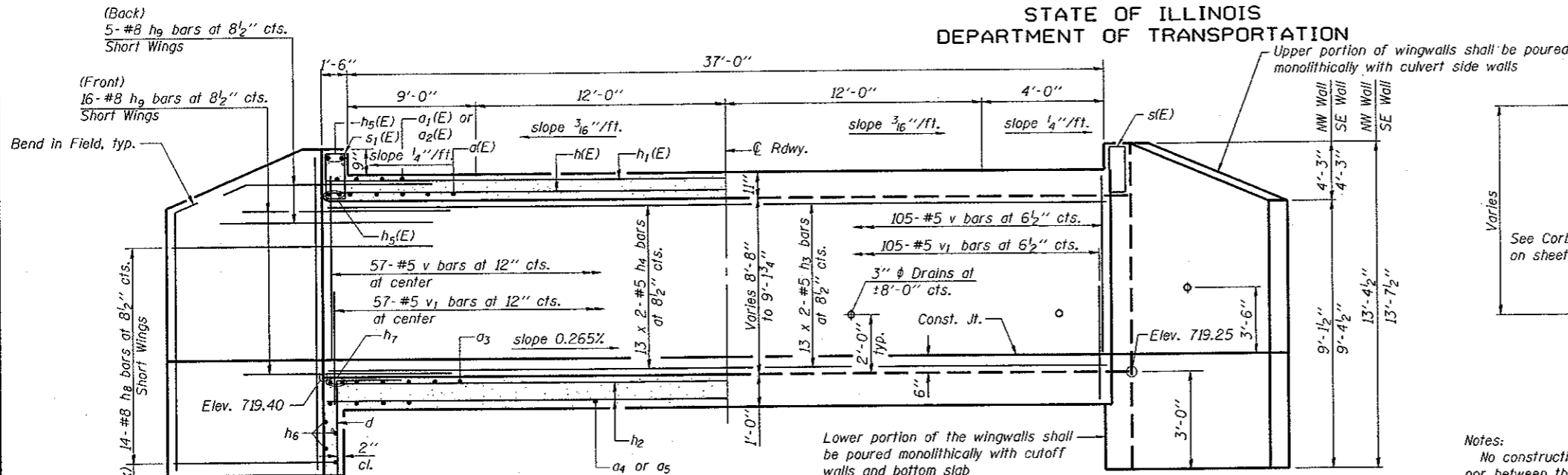


STATE OF ILLINOIS
DEPARTMENT OF TRANSPORTATION

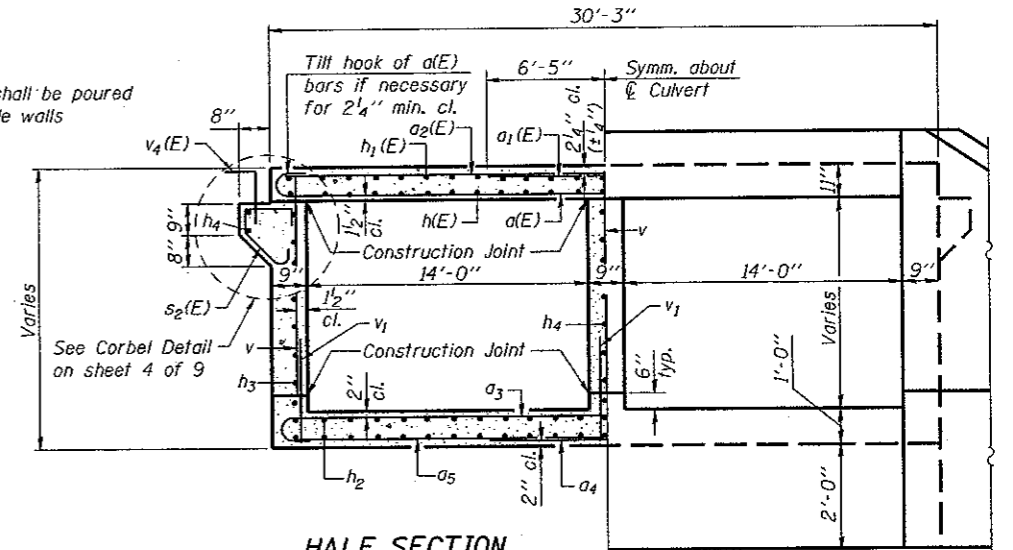


HALF LONG SECTION
Showing bars in Center Wall

HALF ELEVATION
Showing bars in Outside Wall

Dimensions are at right angles to C.R. Roadway

Notes:
No construction joint shall be permitted in the culvert bottom slab, nor between the horizontal cantilever wingwalls and the culvert bottom slab or side walls.
Bars indicated thus 12 x 4-#5 etc. indicates 12 lines of bars with 4 lengths per line.
For headwall details, Section B-B. and long wing details, see sheet 4 of 9.

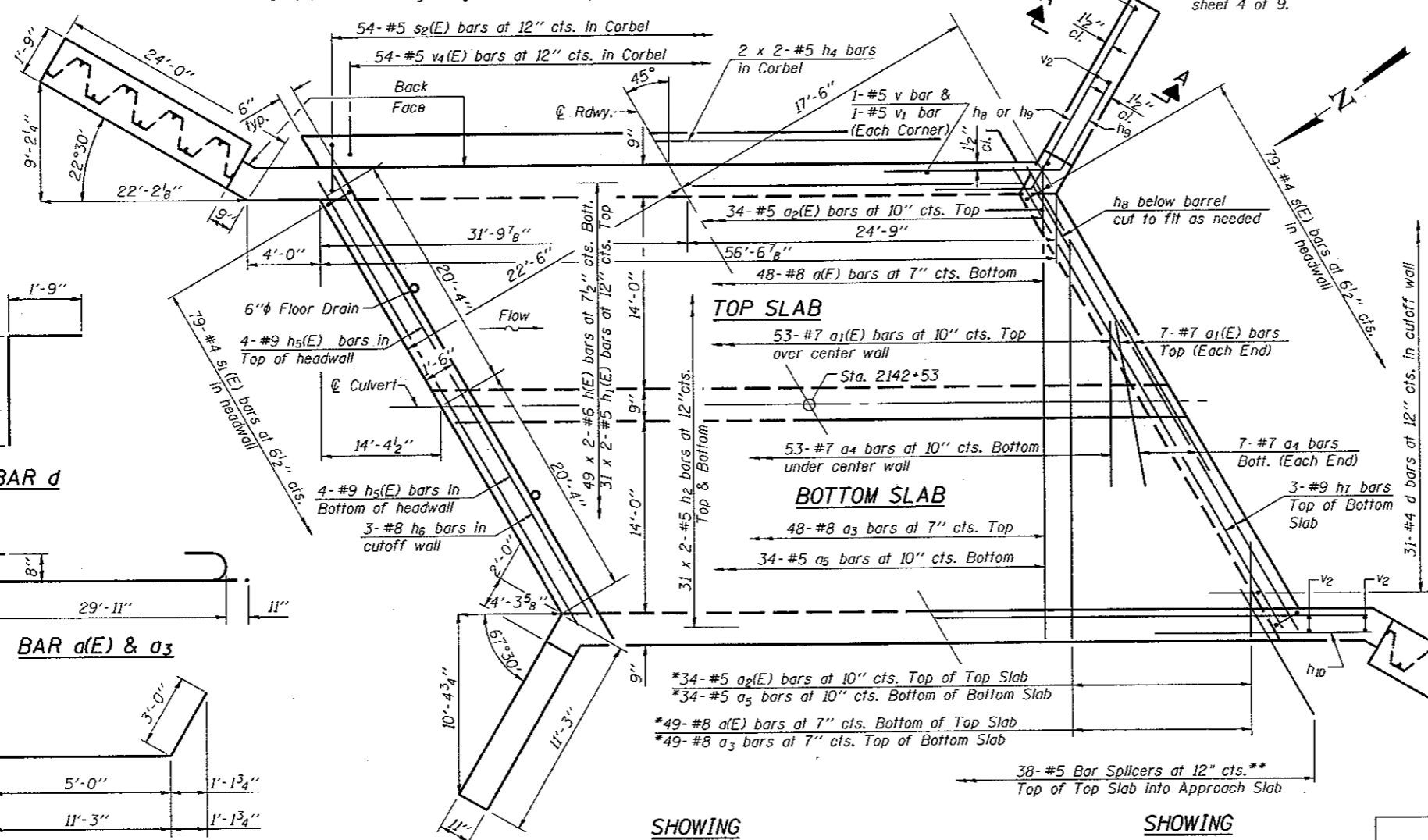


HALF SECTION THRU BARREL

HALF END ELEVATION

BILL OF MATERIAL

Bar	No.	Size	Length	Shape
a(E)	97	#8	31'-9"	U
a1(E)	67	#7	12'-10"	U
a2(E)	68	#5	29'-11"	U
a3	97	#8	31'-9"	U
a4	67	#7	12'-10"	U
a5	68	#5	29'-11"	U
d	62	#4	4'-6"	L
h(E)	98	#6	29'-5"	U
h1(E)	62	#5	29'-3"	U
h2	124	#5	29'-3"	U
h3	52	#5	31'-3"	U
h4	34	#5	29'-3"	U
h5(E)	16	#9	42'-4"	U
h6	6	#8	41'-5"	U
h7	6	#9	42'-4"	U
h8	28	#8	14'-3"	U
h9	42	#8	8'-0"	U
h10	30	#4	9'-0"	U
h11	6	#4	7'-0"	U
h12	14	#6	23'-4"	U
s(E)	79	#4	6'-1"	U
s1(E)	79	#4	5'-11"	U
s2(E)	108	#5	4'-3"	U
s3	76	#5	5'-0"	U
v	285	#5	8'-10"	U
v1	285	#5	2'-11"	U
v2	16	#4	13'-1"	U
v3	14	#6	13'-1"	U
v4(E)	108	#5	3'-9"	L
Concrete Box Culverts		Cu. Yd.	195.5	
Reinforcement Bars		Pound	27300	
Reinforcement Bars, Epoxy Coated		Pound	22160	
Permanent Steel Sheet Piling		Sq. Ft.	1600	
Stud Shear Connectors		Each	96	



SHOWING OUTLINES

SHOWING REINFORCEMENT

PLAN

BAR v4(E)

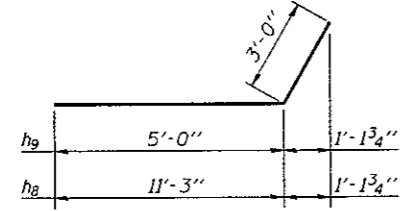
MINIMUM BAR LAP

#5 bar = 2'-0"
#6 bar = 2'-5"

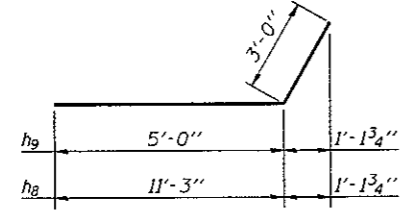
SECTION A-A

DESIGNED - BAS
CHECKED - KEF
DRAWN - SGM
CHECKED - BAS

BAR a(E) & a3



BAR h8 & h9



* Cut a(E), a2(E), a3, and a5 bars to fit skew. Use balance of bar in opposite end.
** Spacing measured perpendicular to C.R. Rdwy.

CULVERT DETAILS
STRUCTURE NO. 020-2014

SHEET NO. 3 9 SHEETS	F.A.P. RTE.	SECTION	COUNTY	TOTAL SHEETS	SHEET NO.
	71	(15B-1)BR-1	DEWITT	76	29
FED. ROAD DIST. NO. ILLINOIS			FED. AID PROJECT		
CONTRACT NO. 70271					