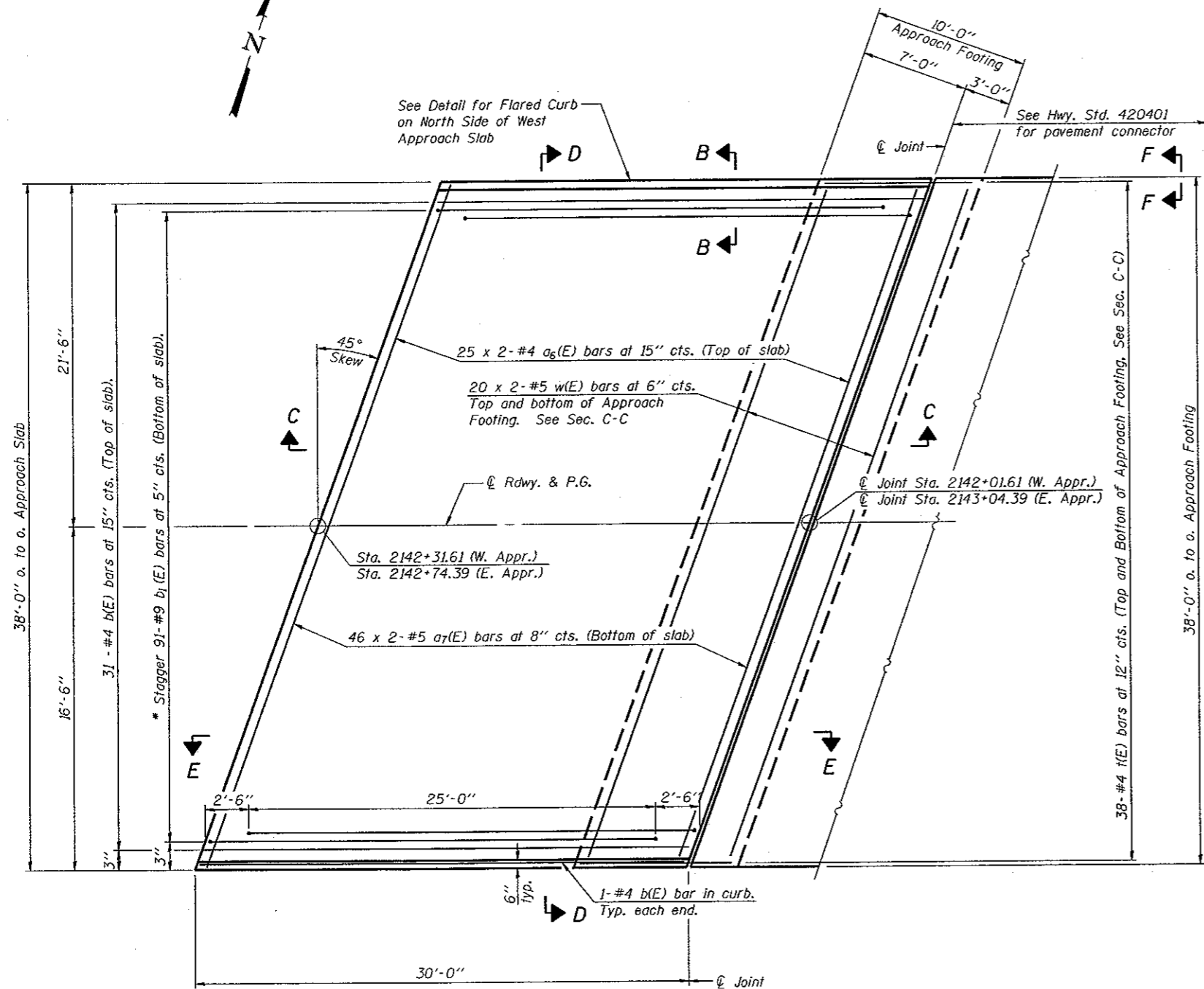


STATE OF ILLINOIS  
DEPARTMENT OF TRANSPORTATION

Notes:  
See sheet 6 of 9 for Sections C-C & D-D and View E-E.  
 $a_6(E)$ ,  $a_7(E)$ , and  $a_8(E)$  bar spacings measured along  $\text{C.R.}$   
Bars indicated thus  $20 \times 2\text{-}\#5$  etc. indicates 20 lines of bars with 2 lengths per line.

\*\* Cost included with Concrete Superstructure.



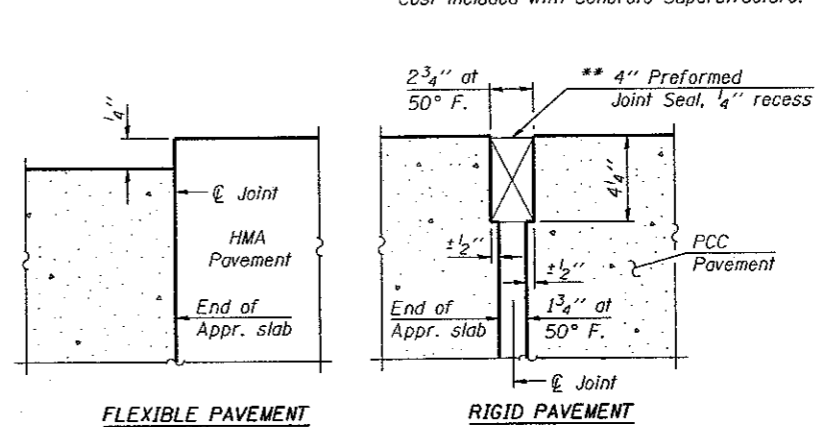
**PLAN**

East Approach Slab shown, West Approach is similar

\*Tilt #9  $b_1(E)$  bars as required to maintain clearance.

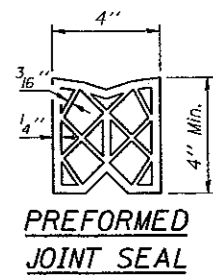
**MIN. BAR LAP**

#5 bar = 2'-0"  
#4 bar = 1'-10"



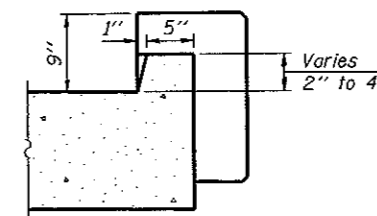
**FLEXIBLE PAVEMENT**

**RIGID PAVEMENT**

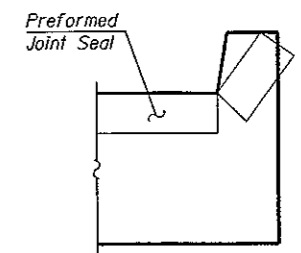


**PREFORMED JOINT SEAL**

**DETAIL A**

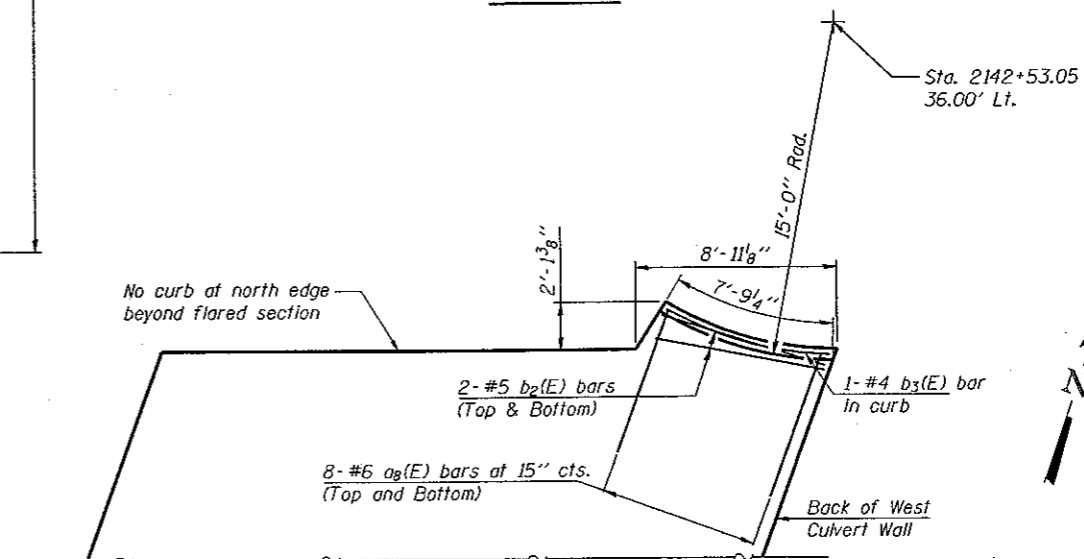


**VIEW B-B**



**VIEW F-F**

Angle Preformed Joint Seal at 45° at curbs when req'd for drainage.



**FLARED CURB SECTION**

At North Edge of West Approach Slab



DESIGNED - BAS
CHECKED - KEF
DRAWN - SGM
CHECKED - BAS

(Sheet 1 of 2)  
**BRIDGE APPROACH SLAB DETAILS**  
**STRUCTURE NO. 020-2014**

SHEET NO. 5 9 SHEETS	F.A.P. RTE.	SECTION	COUNTY	TOTAL SHEETS	SHEET NO.
	71	(15B-1)BR-1	DEWITT	76	31
FED. ROAD DIST. NO. ILLINOIS			FED. AID PROJECT		
CONTRACT NO. 70271					