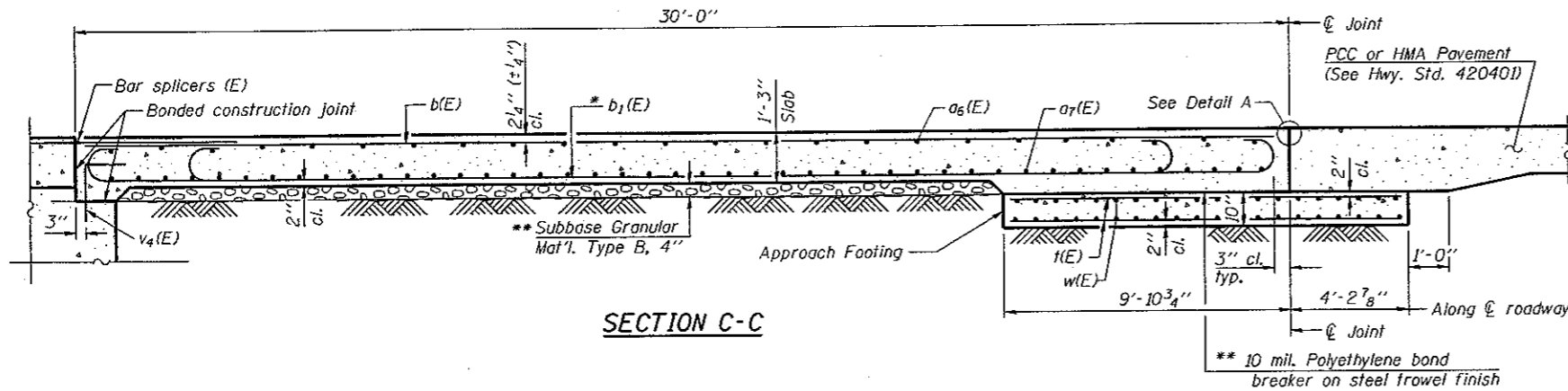
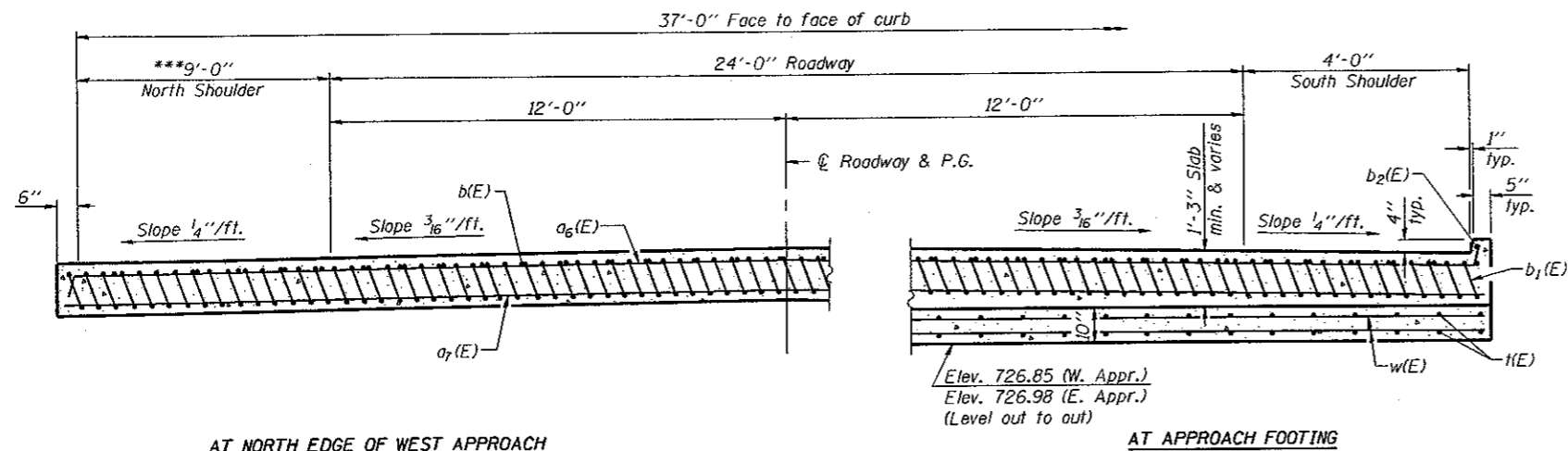


STATE OF ILLINOIS
DEPARTMENT OF TRANSPORTATION

Notes:
See sheet 5 of 9 for Detail A.
Approach slab and parapet concrete shall be paid for as Concrete Superstructure.
Approach footing concrete shall be paid for as Concrete Structures.
Reinforcement shall be paid for as Reinforcement Bars, Epoxy Coated.
For $v_4(E)$ bar details, see sheet 3 of 9.
The approach footing maximum applied service bearing pressure (Q_{max}) = 2.0 ksf.
For bar splicer details, see sheet 8 of 9.
Cost of excavation for approach footing included with Concrete Structures.



SECTION C-C



AT NORTH EDGE OF WEST APPROACH
(with no curb)

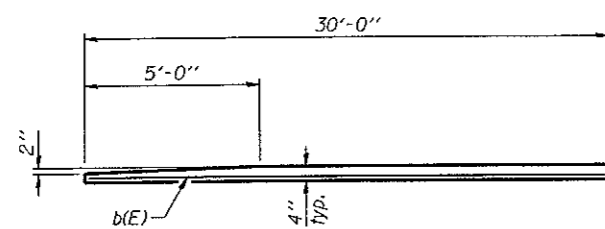
SECTION D-D
(See Plan for dimensions not shown)
(Looking East)

AT APPROACH FOOTING

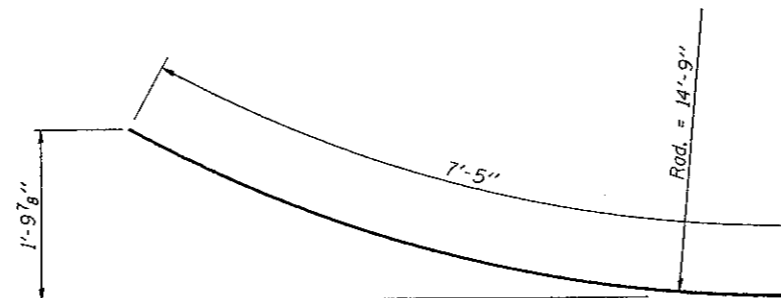
- * Tilt #9 $b_1(E)$ bars as required to maintain clearance.
- ** Cost included with Concrete Superstructure.
- *** Shoulder width varies on west approach slab, see Flored Curb Section detail on sheet 5 of 9.

TWO APPROACHES
BILL OF MATERIAL

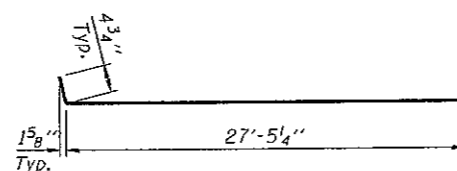
Bar	No.	Size	Length	Shape
$a_6(E)$	100	#4	27'-10"	—
$a_7(E)$	184	#5	27'-8"	—
$a_8(E)$	16	#6	6'-0"	—
$b(E)$	65	#4	29'-8"	—
$b_1(E)$	182	#9	29'-9"	—
$b_2(E)$	4	#5	7'-1"	—
$b_3(E)$	1	#4	7'-5"	—
$k(E)$	152	#4	13'-8"	—
$w(E)$	160	#5	27'-8"	—
Concrete Superstructure			Cu. Yd.	113.1
Concrete Structures			Cu. Yd.	33.2
Reinforcement Bars, Epoxy Coated			Pound	33050



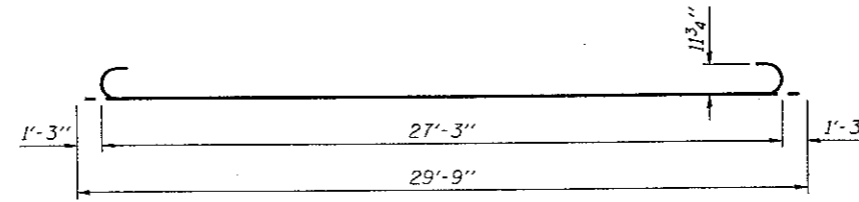
VIEW E-E



BAR $b_3(E)$



BAR $a_6(E)$



BAR $b_1(E)$



DESIGNED - BAS
CHECKED - KEF
DRAWN - SGM
CHECKED - BAS

(Sheet 2 of 2)
BRIDGE APPROACH SLAB DETAILS
STRUCTURE NO. 020-2014

SHEET NO. 6 9 SHEETS	F.A.P. RTE.	SECTION	COUNTY	TOTAL SHEETS	SHEET NO.
	71	(15B-1)BR-1	DEWITT	76	32
FED. ROAD DIST. NO. - [ILLINOIS] FED. AID PROJECT			CONTRACT NO. 70271		