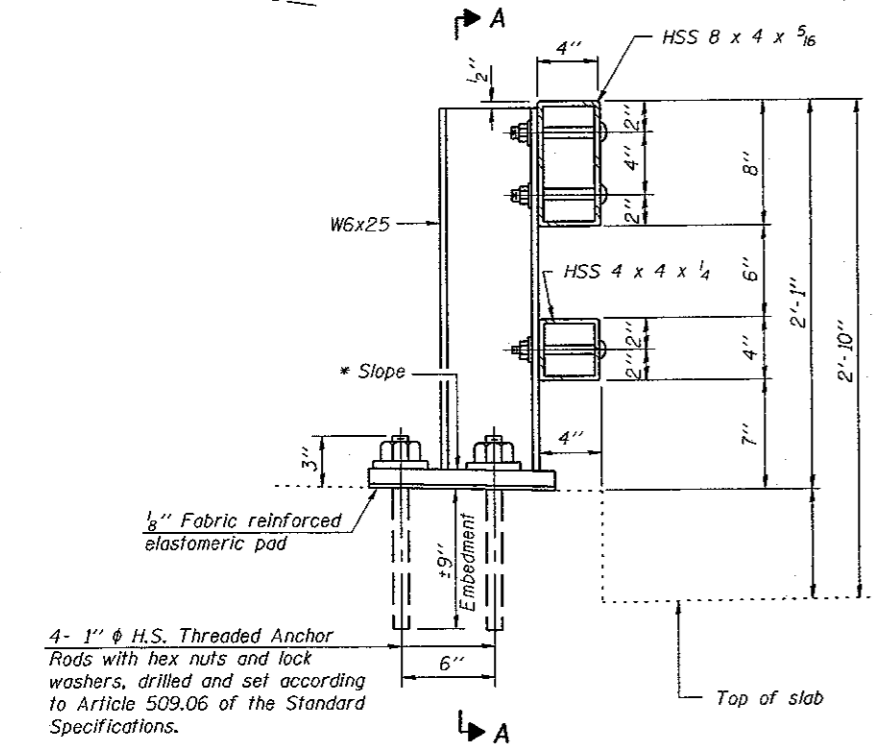
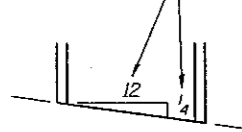
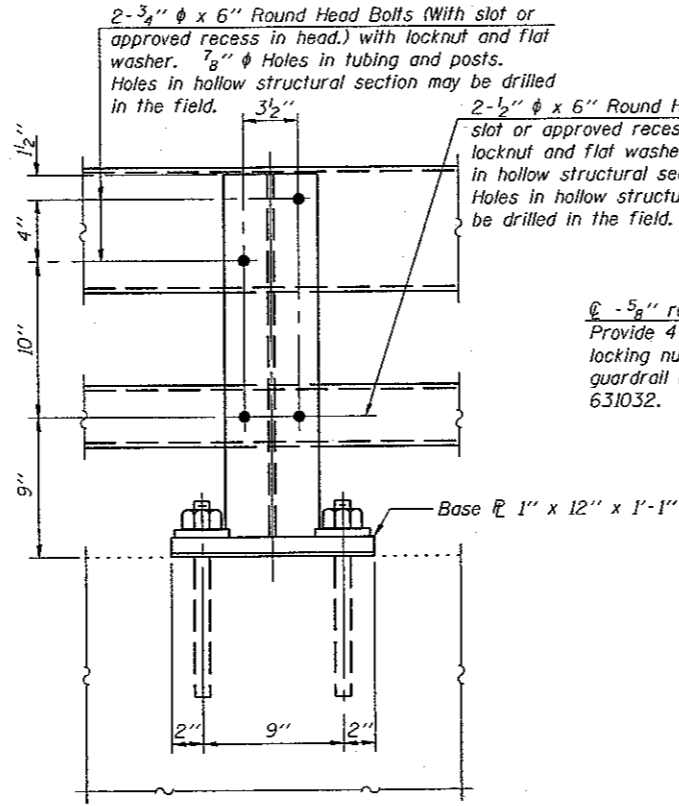


STATE OF ILLINOIS  
DEPARTMENT OF TRANSPORTATION

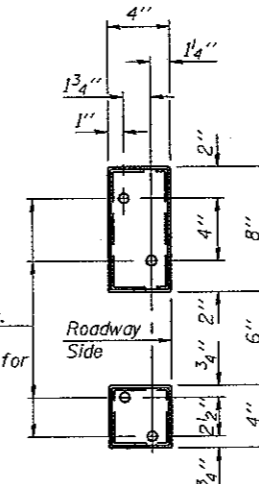
\* Cut bottom end of post to curb slope.



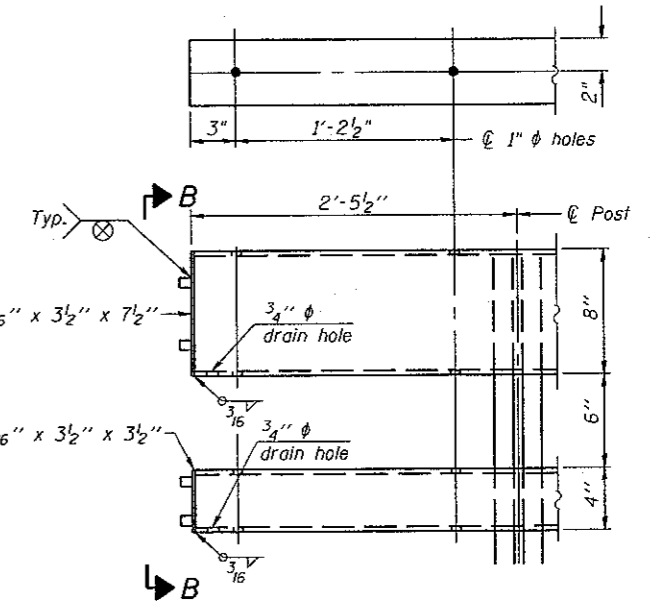
SECTION AT RAIL POST



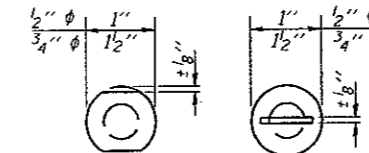
SECTION A-A



VIEW B-B



END OF RAIL DETAILS



VIEW C-C

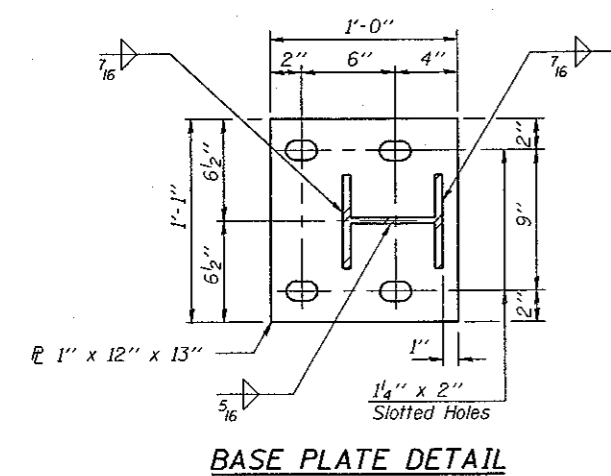
Notes:

- All field drilled holes shall be coated with an approved zinc rich paint before erection.
- Posts shall not be located closer than 1'-3" to an existing bridge expansion joint or end of bridge.
- Steel Bridge Rail expansion joint shall be provided between any two (2) posts which span a bridge expansion joint. Bolts located at expansion joint shall be provided with locknuts and shall be tightened only to a point that will allow railing movement.
- Provide one 1/8" and two 1/16" steel shims for 25% of the posts. Shims shall be similar to base plates in size and holes.
- All steel rail elements shall be galvanized according to Article 509.05 of the Standard Specifications.

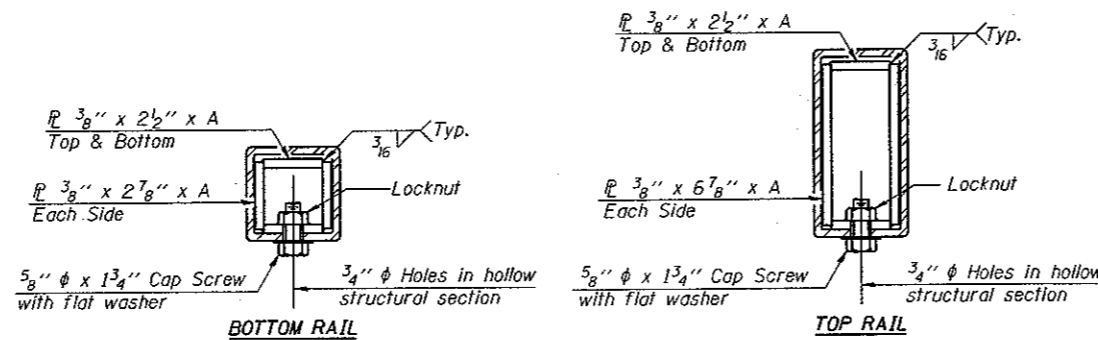
SPLICE DIMENSIONS

T	D	A	B	C	E
≤ 4"	2 1/2"	1'-8"	2"	4"	2 1/2"
> 4" ≤ 6 1/2"	3 3/4"	2'-0"	2 1/2"	5 1/2"	3 1/2"
> 6 1/2" ≤ 9"	5"	2'-4"	3 1/2"	6 1/2"	9"
> 9" ≤ 13"	7"	2'-10"	4 1/2"	8 1/2"	11"
Rail Splice	1 1/4"	1'-8"	2"	4"	—

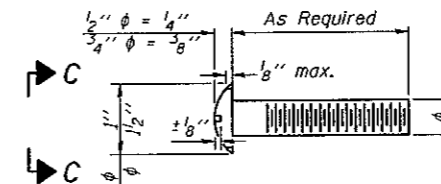
T = Total movement at expansion joint as shown on the design plans.



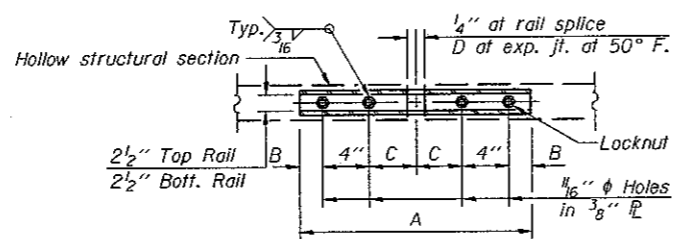
BASE PLATE DETAIL



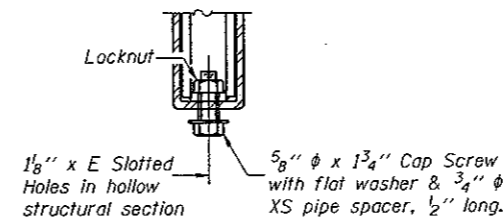
SECTIONS AT RAIL SPLICE



DETAIL OF 1/2" φ & 3/4" φ ROUND HEAD BOLTS



PLAN-BOTT. SPLICE TYPICAL



RAIL SPLICE CONNECTION AT EXPANSION JT.

BILL OF MATERIAL

Item	Unit	Quantity
Steel Railing, Type 2399	Foot	88

STEEL RAILING, TYPE 2399  
STRUCTURE NO. 020-2014



DESIGNED - BAS
CHECKED - KEF
DRAWN - SGM
CHECKED - BAS

(6'-3" Maximum Post Spacing)

SHEET NO. 7 9 SHEETS	F.A.P. RTE.	SECTION	COUNTY	TOTAL SHEETS	SHEET NO.
	71	(15B-1)BR-1	DEWITT	76	33
			CONTRACT NO. 70271		
FED. ROAD DIST. NO. ILLINOIS FED. AID PROJECT					