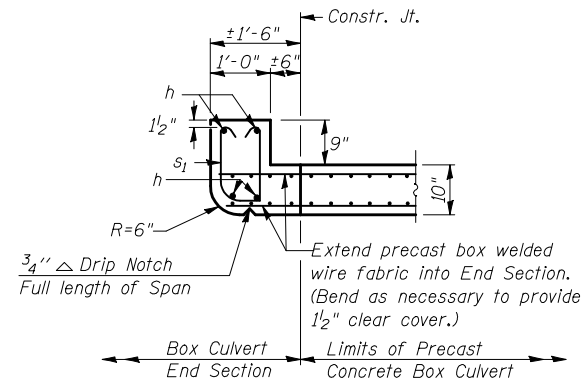
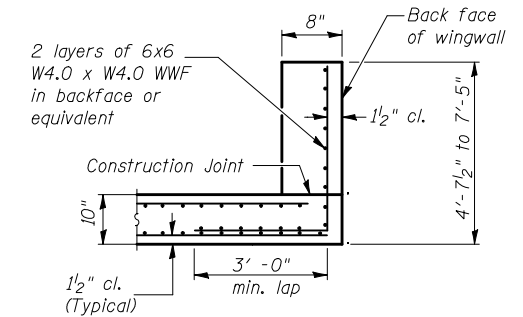


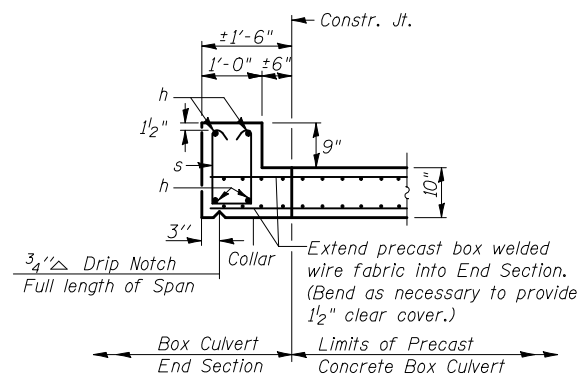
CORNER DETAIL
(Showing dimensions and weep hole)



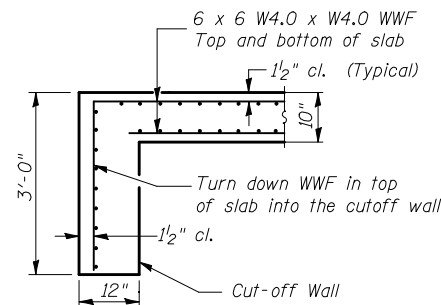
SECTION F-F
TOP SLAB / HEADWALL UPSTREAM END



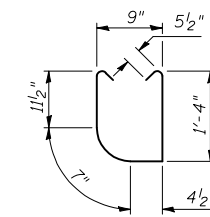
SECTION C-C
WINGWALLS



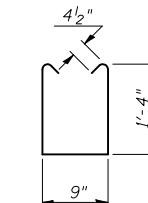
SECTION F-F
TOP SLAB / HEADWALL DOWNSTREAM END



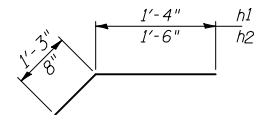
SECTION A-A
DOWNSTREAM END



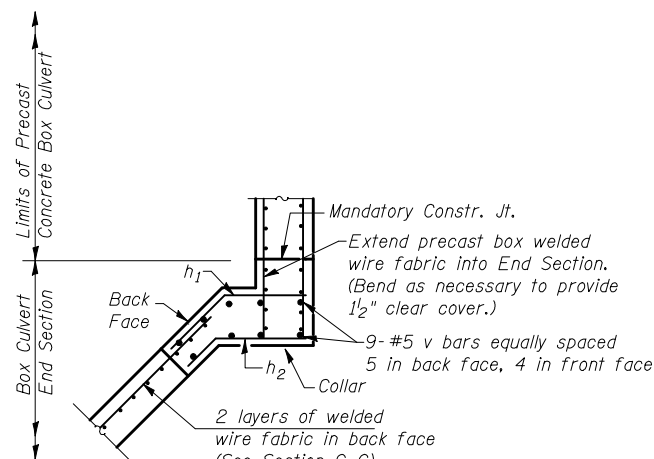
s1 BARS
UPSTREAM END



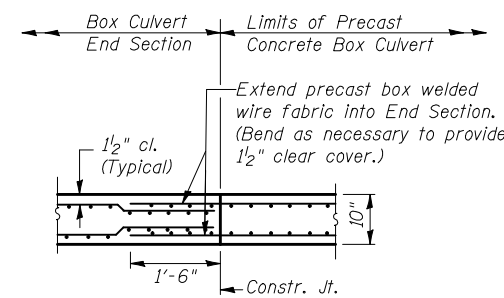
s BARS
DOWNSTREAM END



h1 & h2 BARS



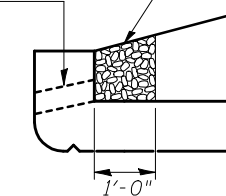
SECTION D-D
(Showing reinforcement)



SECTION B-B
BOTTOM SLAB

Coarse aggregate full length of both headwalls. To be placed by Grading Contractor. Cost included with Box Culvert End Sections.

6" x 3" Formed Opening



DRAIN DETAIL

END SECTION DETAILS
SINGLE 10'x5' PRECAST BOX CULVERT
F.A.P. ROUTE 711 - SECTION 115CR
VERMILION COUNTY
STATION 172+33.00, S.N. 092-8086
CULVERT NO. 1

FILE NAME =	USER NAME = shererjm	DESIGNED - JMS	REVISED -
ct:\pwork\pwork\shererjm\d0189007\0570617-sht-Details.dgn		DRAWN - JMS	REVISED -
	PLOT SCALE = 40.0000' / IN.	CHECKED -	REVISED -
	PLOT DATE = 11/16/2010	DATE - 031210	REVISED -

STATE OF ILLINOIS
DEPARTMENT OF TRANSPORTATION

BOX CULVERT END SECTION DETAILS			
CULVERT NO. 1			
SCALE: N/A	SHEET NO. 7 OF 8 SHEETS	STA.	TO STA.

F.A.P. RTE.	SECTION	COUNTY	TOTAL SHEETS	SHEET NO.
711	115CR	VERMILION	39	17
CONTRACT NO. 70617			ILLINOIS FED. AID PROJECT	