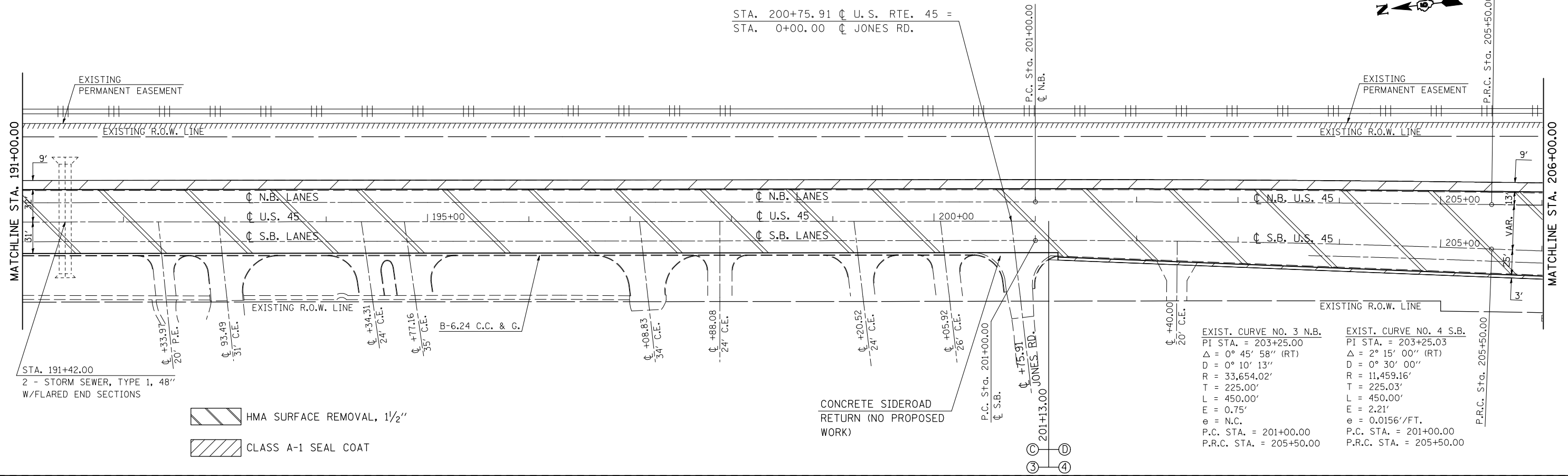


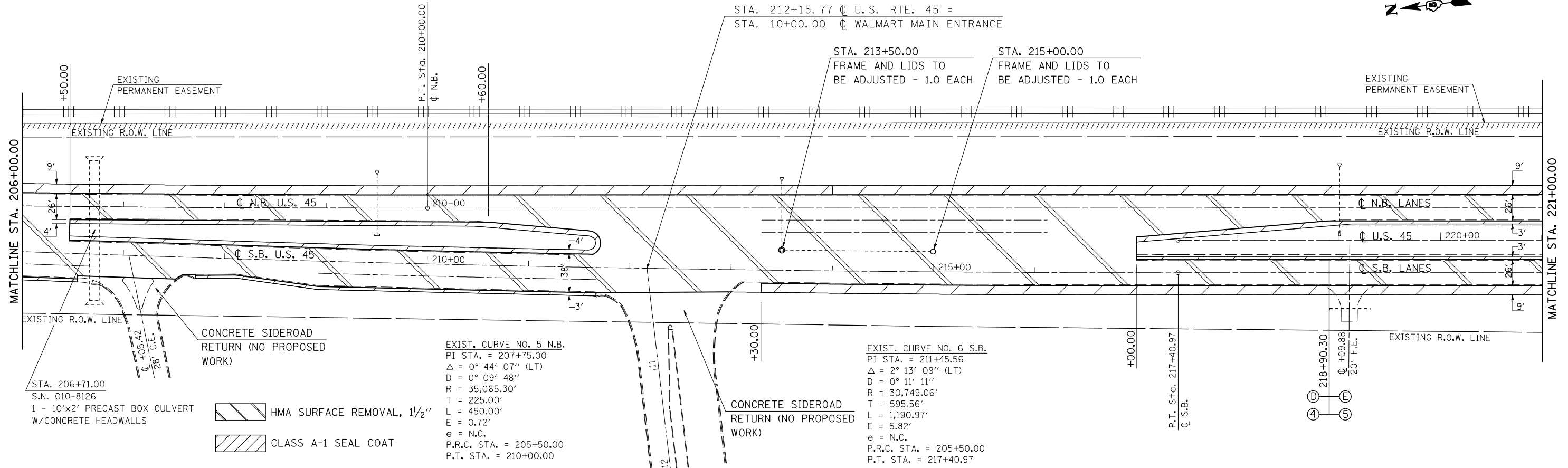
SEC 1, T. 18 N., R. 8 E., 3rd P.M.

STA. 200+75.91 \bar{C} U.S. RTE. 45 =
 STA. 0+00.00 \bar{C} JONES RD.



SEC 1, T. 18 N., R. 8 E., 3rd P.M.

STA. 212+15.77 \bar{C} U.S. RTE. 45 =
 STA. 10+00.00 \bar{C} WALMART MAIN ENTRANCE



FILE NAME =	USER NAME = bucklesjj	DESIGNED - GAE	REVISED -
ca:\pwwork\pwwork\bucklesjj\d0218355\d0708-sht-plan.dgn		DRAWN - BBP	REVISED -
PLOT SCALE = 100.0000' / IN.		CHECKED -	REVISED -
PLOT DATE = 12/16/2010		DATE - 06/04/10	REVISED -

STATE OF ILLINOIS
 DEPARTMENT OF TRANSPORTATION

PLAN SHEETS

SCALE: 1" = 50' SHEET NO. 3 OF 10 SHEETS STA. 191+00.00 TO STA. 221+00.00

F.A.P. RTE.	SECTION	COUNTY	TOTAL SHEETS	SHEET NO.
804	(23,24,25)RS-5	CHAMPAIGN	61	31
CONTRACT NO. 70708				
ILLINOIS FED. AID PROJECT				