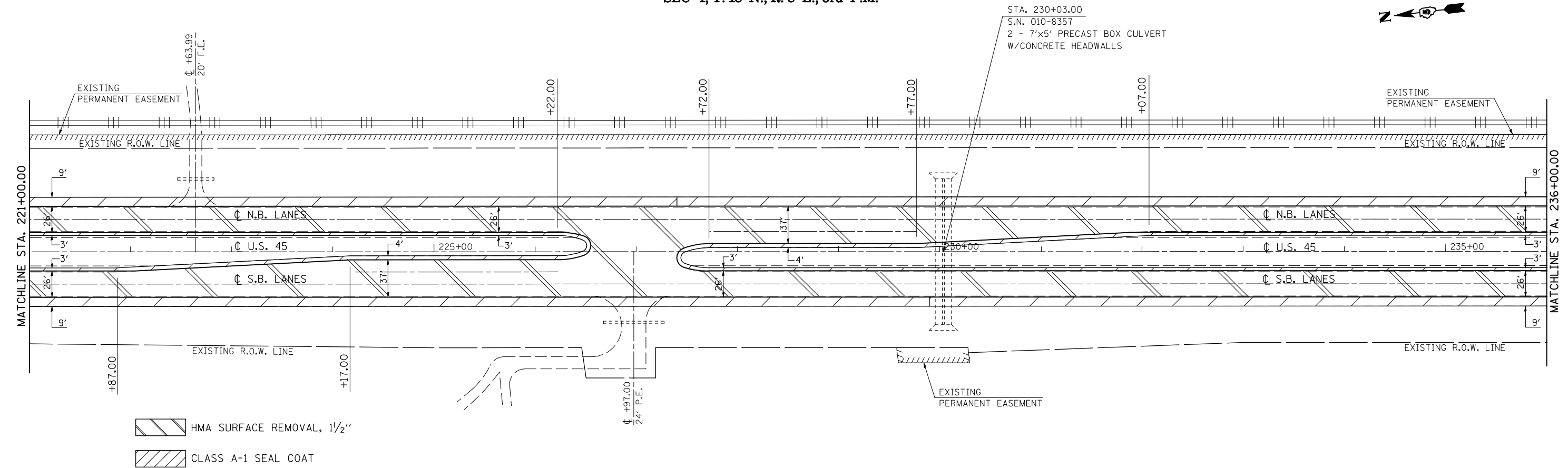
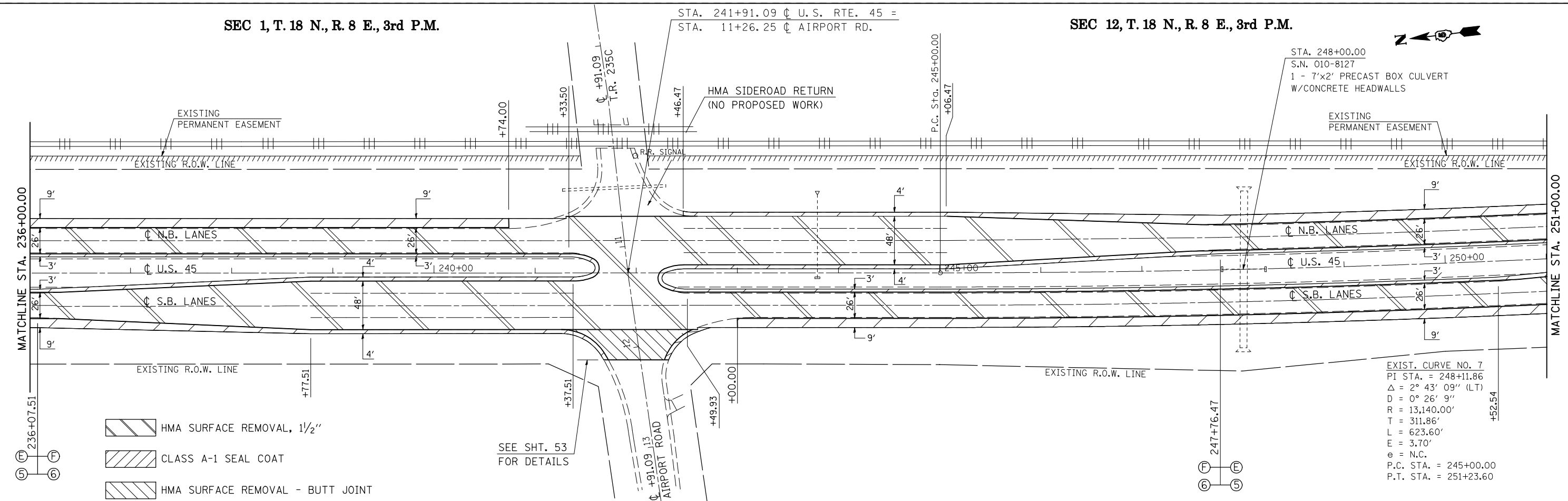


SEC 1, T. 18 N., R. 8 E., 3rd P.M.



SEC 1, T. 18 N., R. 8 E., 3rd P.M.

SEC 12, T. 18 N., R. 8 E., 3rd P.M.



EXIST. CURVE NO. 7
 PI STA. = 248+11.86
 $\Delta = 2^\circ 43' 09''$ (LT)
 $D = 0^\circ 26' 9''$
 $R = 13,140.00'$
 $T = 311.86'$
 $L = 623.60'$
 $E = 3.70'$
 $e = N.C.$
 P.C. STA. = 245+00.00
 P.T. STA. = 251+23.60

FILE NAME =	USER NAME = bucklesjj	DESIGNED - GAE	REVISED -
ca:\pwwork\pwwork\dot\bucklesjj\d0218355\d0570708-sht-plan.dgn		DRAWN - BBP	REVISED -
		CHECKED -	REVISED -
		DATE - 06/04/10	REVISED -

STATE OF ILLINOIS
 DEPARTMENT OF TRANSPORTATION

PLAN SHEETS

SCALE: 1" = 50' SHEET NO. 4 OF 10 SHEETS STA. 221+00.00 TO STA. 251+00.00

F.A.P. RTE.	SECTION	COUNTY	TOTAL SHEETS	SHEET NO.
804	(23,24,25)RS-5	CHAMPAIGN	61	32
CONTRACT NO. 70708				
ILLINOIS FED. AID PROJECT				