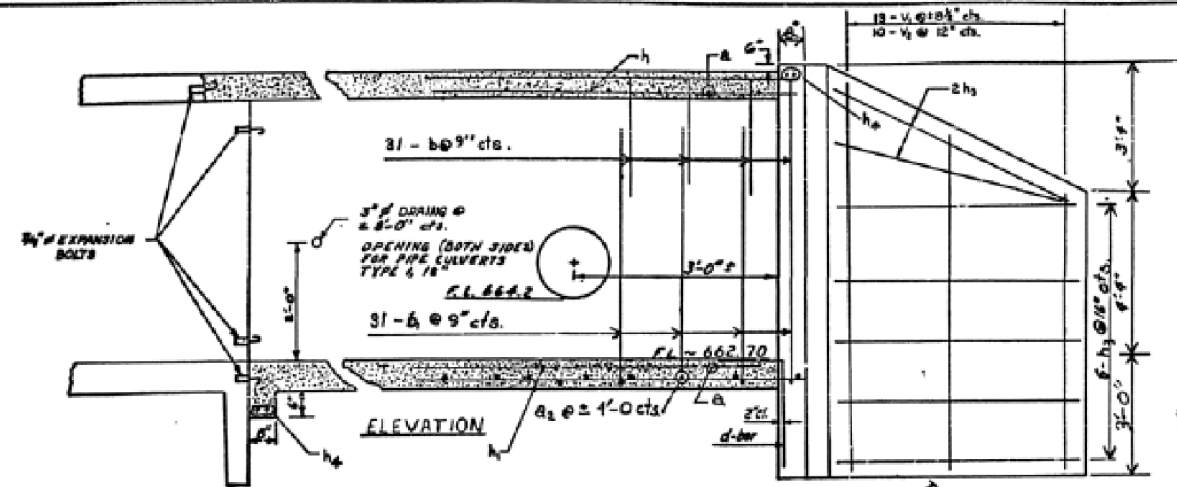


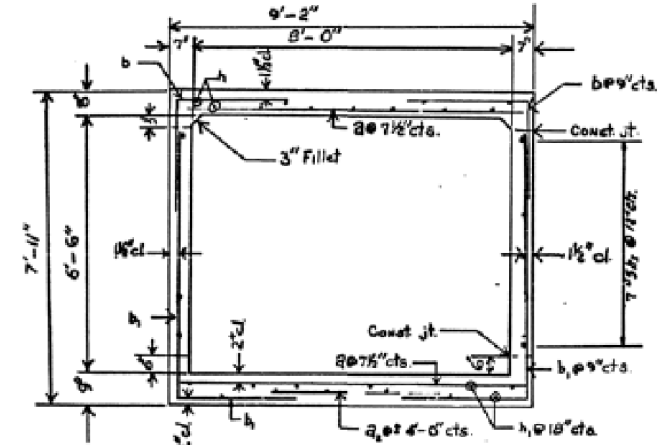
FOR INFORMATION ONLY

FOR INFORMATION ONLY

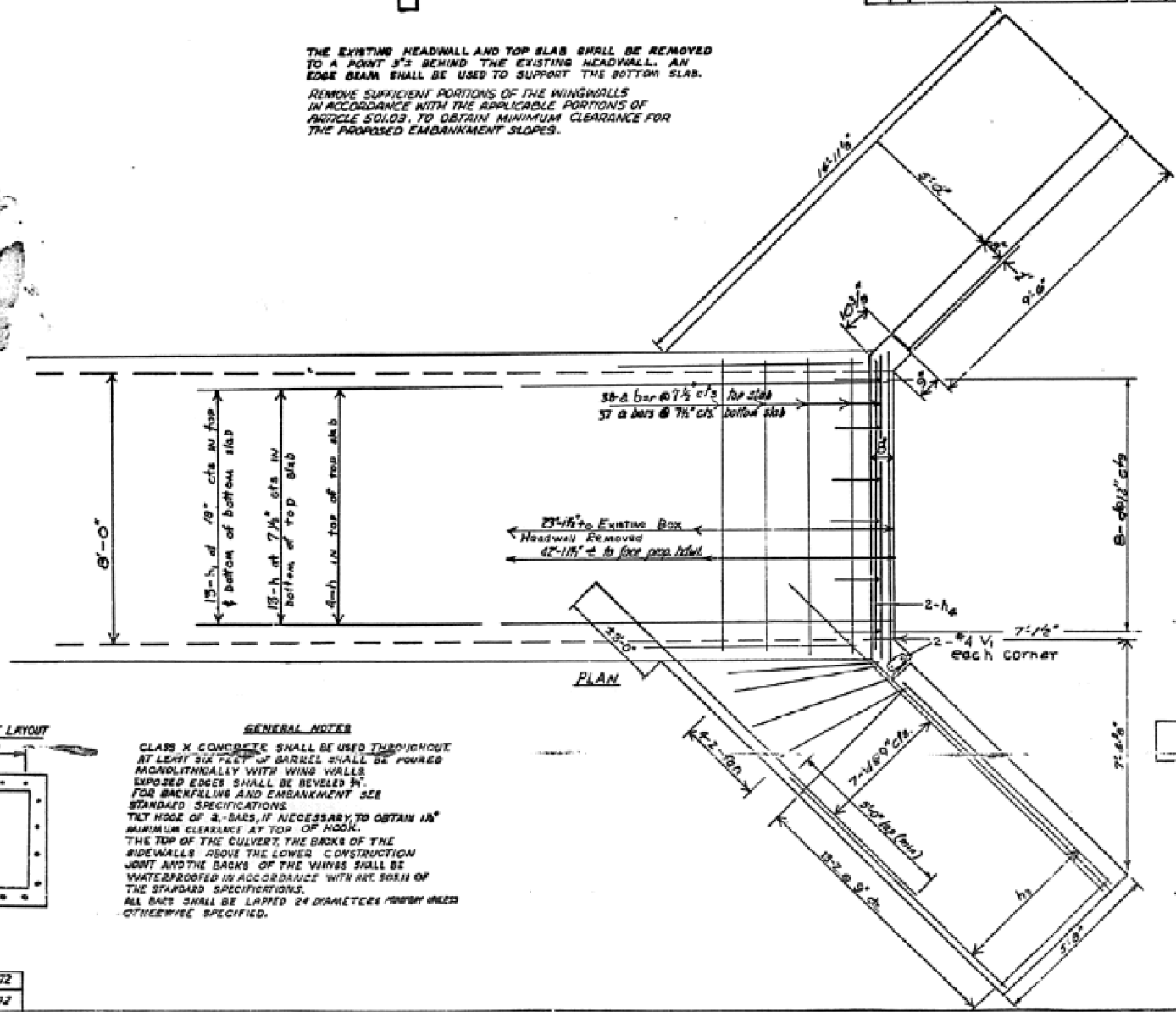
PROJECT NO.	SECTION	COUNTY	SHEET NO.
EA 119	116CR	VERMILION	96 578
* 15 (N-1, 2, 3) & 16 (N, 15)			



THE EXISTING HEADWALL AND TOP SLAB SHALL BE REMOVED TO A POINT 3'-2\"/>

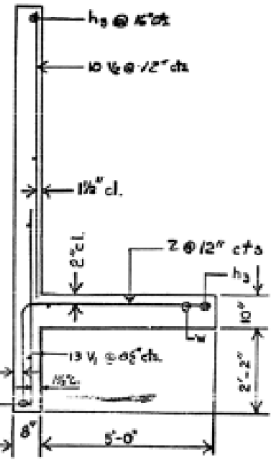
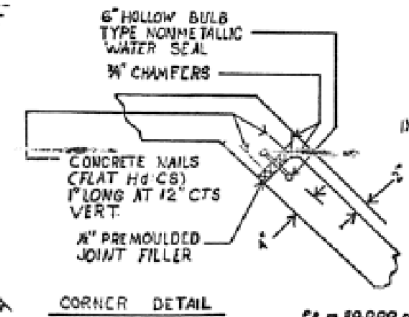


NOTE: 15 # 4 BARS IN BOTTOM OF TOP SLAB.



NOTE: EXPANSION BOLTS SHALL CONSIST OF SELF DRILLING EXPANSION ANCHOR AND 1/4\"/>

NOTE: HORIZONTAL CONSTRUCTION JOINTS IN WINGS ARE OPTIONAL AT OR 6\"/>



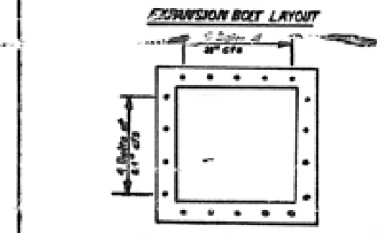
BILL OF MATERIAL			
BAR	NO.	SIZE	LENGTH
a	75	#7	8'-10"
a1	6	#4	4'-0"
b	62	#5	6'-0"
b1	62	#5	9'-9"
d	8	#3	4'-6"
h	17	#5	22'-9"
h1	13	#5	22'-0"
h2	14	#5	22'-0"
h3	18	#4	9'-3"
h4	4	#6	9'-0"
v	30	#4	5'-0"
v1	20	#4	6'-3"
w	14	#5	14'-0"
z	34	#5	8'-2"

class x concrete cu. yds. 25.6
rein. bars lbs. 4,200
expans. bolts #4 / each 18

CULVERT EXTENSION
RIGHT STA. 627+32

NOTE: ALL BARS SHALL BE ROUND ASTM A605-49 THE SIZE AND 12 THE NO. OF #4 INCHES BY THE NOMINAL DIAMETER.

Max. Soil Pressure
Under Fig. 2325 P.S.F.



GENERAL NOTES
CLASS X CONCRETE SHALL BE USED THROUGHOUT AT LEAST SIX FEET OF BARREL SHALL BE Poured MONOLITHICALLY WITH WING WALLS EXPOSED EDGES SHALL BE REVELED 1/2\"/>

DESIGNED BY	E.A.D.	6-7-72
CHECKED BY	M.R.S.	8-24-72

Use Cl. X Conc from 25.5 to 25.6 cu yds. Rein. Bars from 4,260 to 4,200 # 3-18-75 A.R.J.

STATE OF ILLINOIS
DEPARTMENT OF TRANSPORTATION

AS-BUILTS FOR SN 092-8033

F.A.P. RTE.	SECTION	COUNTY	TOTAL SHEETS	SHEET NO.
711	116CR	VERMILION	50	18
CONTRACT NO. 70801				

SCALE: SHEET NO. OF SHEETS STA. TO STA.