

STATE OF ILLINOIS
DEPARTMENT OF TRANSPORTATION
DIVISION OF HIGHWAYS

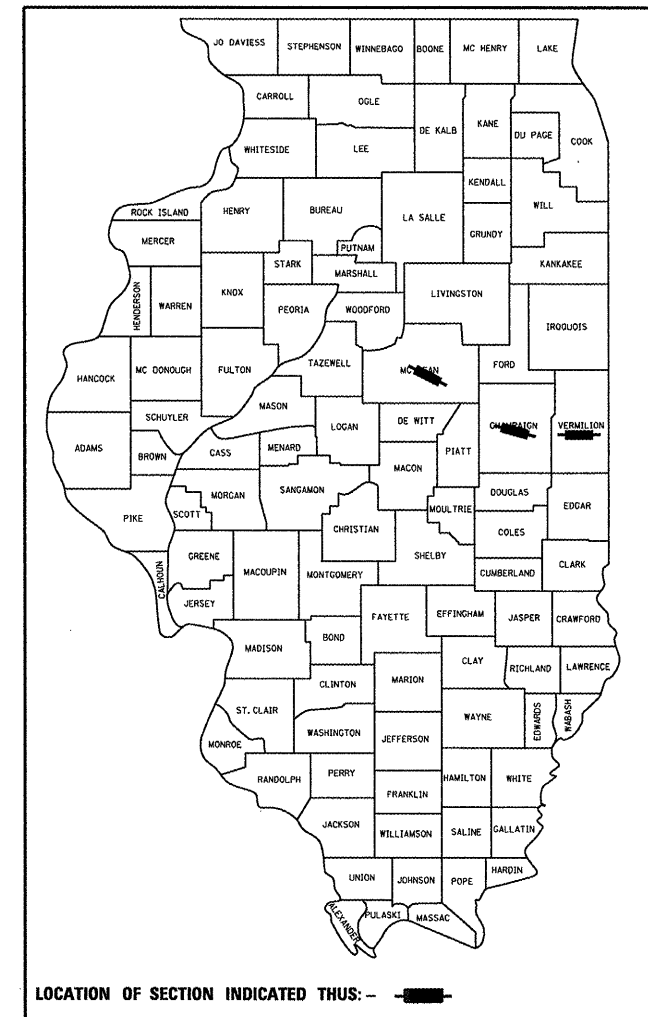
PROPOSED
HIGHWAY PLANS

F.A.I. ROUTE 74 (I-74)
SECTION FY2011 BRIDGE DECK SEALING
VARIOUS DISTRICT WIDE BRIDGE DECK SEALING
CHAMPAIGN, MCLEAN & VERMILION COUNTIES

C-95-033-10

F.A.I. RTE.	SECTION	COUNTY	TOTAL SHEETS	SHEET NO.
74	*	**	19	1
		ILLINOIS	CONTRACT NO. 70861	

•FY2011 BRIDGE DECK SEALING
 **CHAMPAIGN, MCLEAN & VERMILION
 D-95-033-10

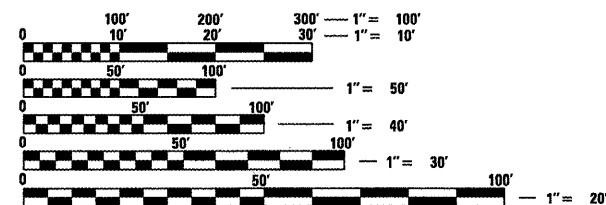


FOR INDEX OF SHEETS, SEE SHEET NO. 4
 FOR SUMMARY OF QUANTITIES, SEE SHEET NO. 5

CURRENT ADT	
F. A. I. 74	
HIGHEST LOCATION SHOWN	
2009 ADT =	54,300
2020 ADT =	65,000
PU + PC =	80%
SU =	5%
MU =	15%

DESIGN DESIGNATION
INTERSTATE

FOR LOCATION MAPS,
 SEE SHEET NO. 2 AND SHEET NO. 3



FULL SIZE PLANS HAVE BEEN PREPARED USING STANDARD ENGINEERING SCALES. REDUCED SIZED PLANS WILL NOT CONFORM TO STANDARD SCALES. IN MAKING MEASUREMENTS ON REDUCED PLANS, THE ABOVE SCALES MAY BE USED.

J.U.L.I.E.
 JOINT UTILITY LOCATION INFORMATION FOR EXCAVATION
 1-800-892-0123
 OR 811

PROJECT ENGINEER: TIM BRANDENBURG
PROJECT MANAGER: TIM BRANDENBURG
 (217)465-4181
CONTRACT NO. 70861

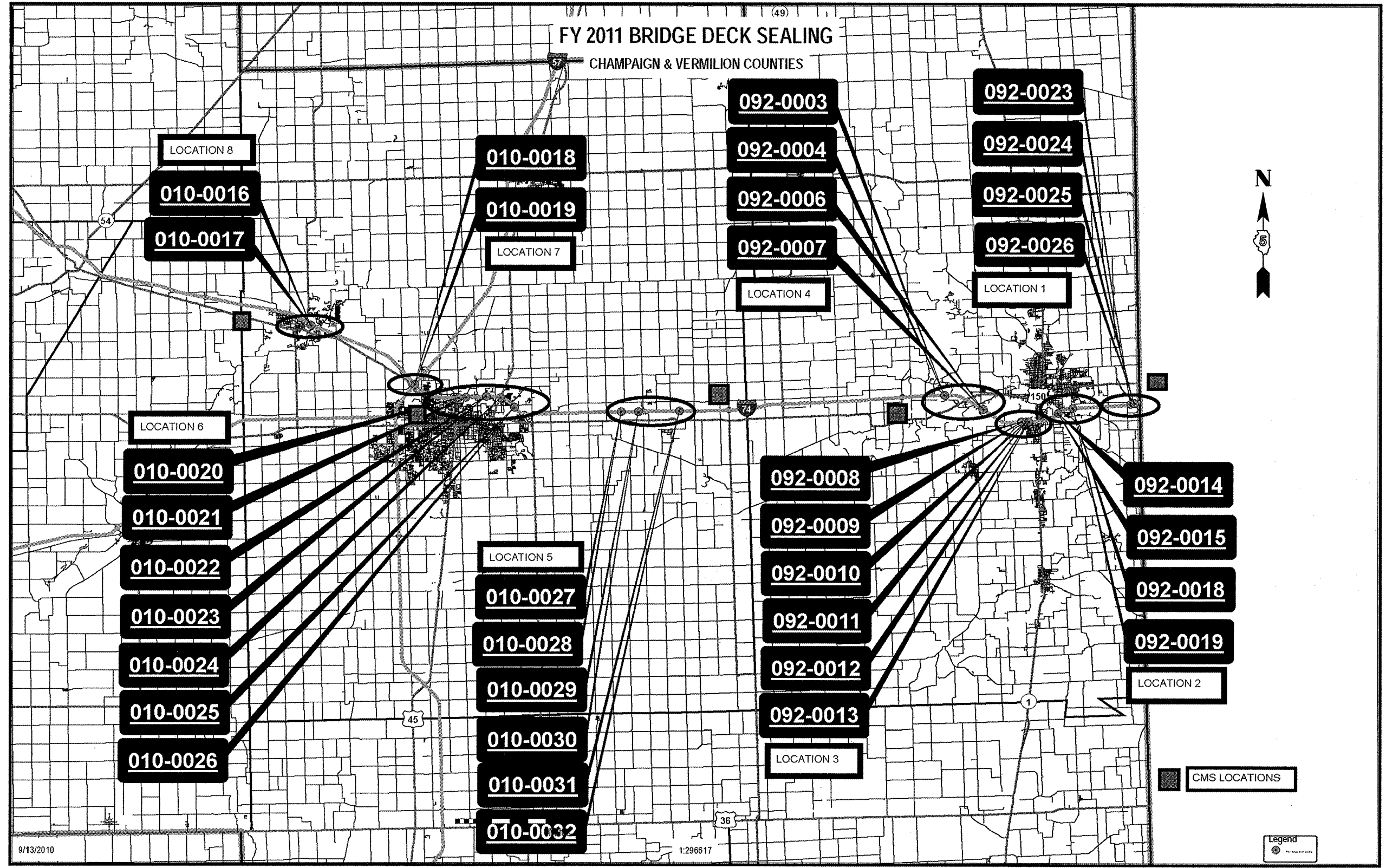
STATE OF ILLINOIS
 DEPARTMENT OF TRANSPORTATION
 DIVISION OF HIGHWAYS

SUBMITTED 11/9 2010
Joseph K. Gowen
 DEPUTY DIRECTOR OF HIGHWAYS, REGION ENGINEER

Feb 4 2011
Scott E. Stitt, PE, Ia
 acting ENGINEER OF DESIGN AND ENVIRONMENT

Feb 4 2011
Christine M. Reed, Ia
 DIRECTOR OF HIGHWAYS, CHIEF ENGINEER

**PRINTED BY THE AUTHORITY
 OF THE STATE OF ILLINOIS**



9/13/2010

1:296617

FILE NAME =	USER NAME = ceerlockjd	DESIGNED - TJB	REVISED -
c:\pwwork\pwwid\ceerlockjd\0185207.D	70861-sht-loc.mps.dgn	DRAWN - BBP	REVISED -
	PLOT SCALE = 48,0000 / IN.	CHECKED -	REVISED -
	PLOT DATE = 11/15/2010	DATE - 09/20/10	REVISED -

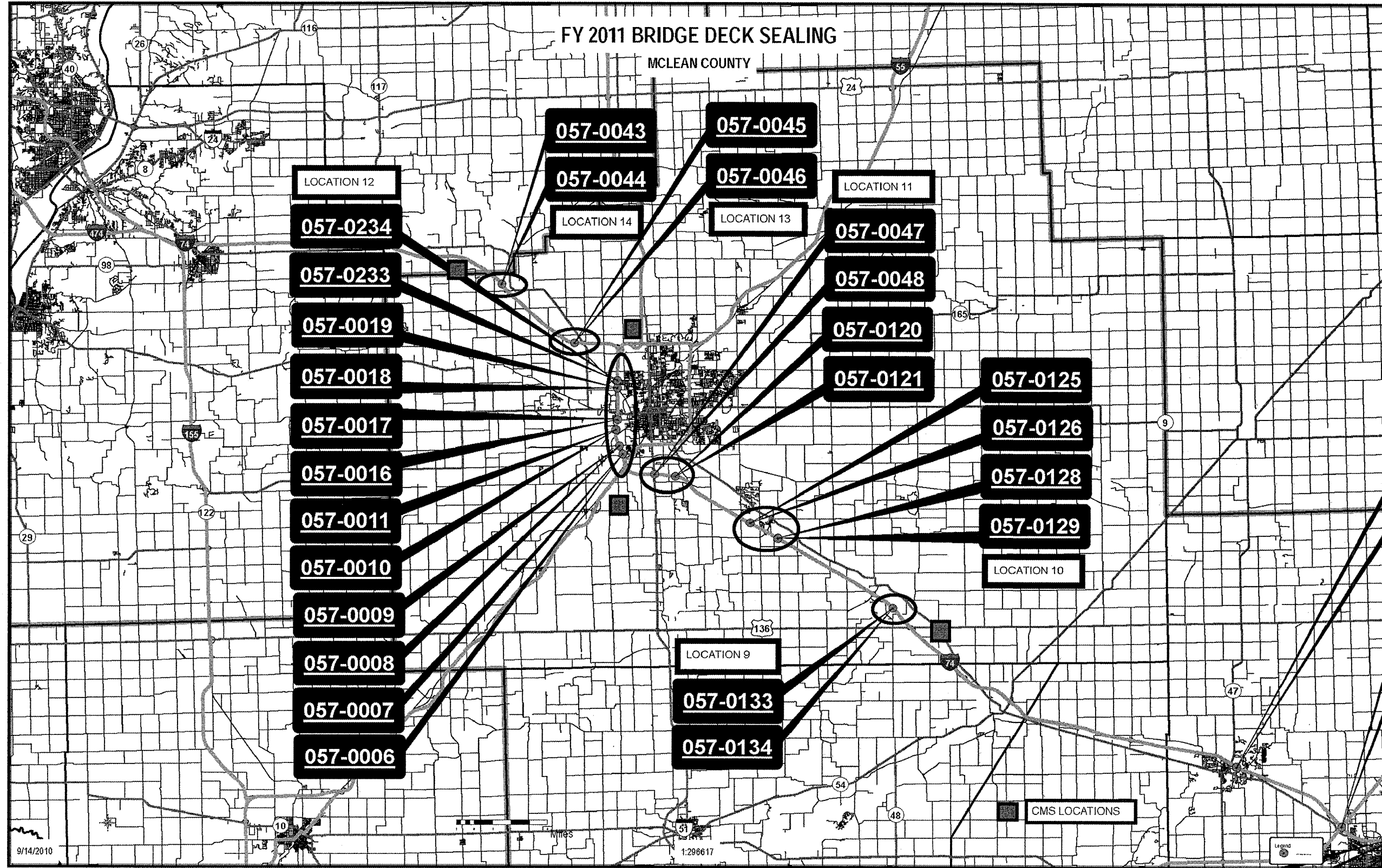
STATE OF ILLINOIS
DEPARTMENT OF TRANSPORTATION

LOCATION MAP
CHAMPAIGN & VERMILION COUNTIES

SCALE: NONE SHEET NO. 1 OF 2 SHEETS STA. TO STA.

F.A.I. RTE.	SECTION	COUNTY	TOTAL SHEETS	SHEET NO.
74			19	2
CONTRACT NO. 70861				
[ILLINOIS] FED. AID PROJECT				

•FY2011 BRIDGE DECK SEALING
••CHAMPAIGN, MCLEAN & VERMILION



FILE NAME *	USER NAME * ceorlock_jd	DESIGNED - TJB	REVISED -
c:\pwwork\pwwork\ceorlock_jd\0185207.D	70861-sht-loc_maps.dgn	DRAWN - BBP	REVISED -
PLOT SCALE * 40.0000 / IN.		CHECKED -	REVISED -
PLOT DATE * 11/15/2010		DATE - 09/20/10	REVISED -

STATE OF ILLINOIS
DEPARTMENT OF TRANSPORTATION

LOCATION MAP
MCLEAN COUNTY

SCALE: NONE SHEET NO. 2 OF 2 SHEETS STA. TO STA.

F.A.I. RTE.	SECTION	COUNTY	TOTAL SHEETS	SHEET NO.
74	*	*	19	3
CONTRACT NO. 70861				
ILLINOIS FED. AID PROJECT				

*FY2011 BRIDGE DECK SEALING
**CHAMPAIGN, MCLEAN & VERMILION

INDEX OF SHEETS

SHEET NO.	DESCRIPTION
1	COVER SHEET
2	LOCATION MAP - CHAMPAIGN & VERMILION COUNTIES
3	LOCATION MAP - MCLEAN COUNTY
4	INDEX OF SHEETS
4	LIST OF HIGHWAY STANDARDS
4	GENERAL NOTES
5	SUMMARY OF QUANTITIES
6-9	TYPICAL APPLICATION SECTIONS
10-11	TOTAL SCHEDULE OF QUANTITIES - APPLICATION
12-13	TOTAL SCHEDULE OF QUANTITIES - TC & P
14-15	CHAMPAIGN COUNTY SCHEDULES
16-17	VERMILION COUNTY SCHEDULES
18-19	MCLEAN COUNTY SCHEDULES

LIST OF HIGHWAY STANDARDS

STANDARD NO.	DESCRIPTION
0000001-06	STANDARD SYMBOLS, ABBREVIATIONS AND PATTERNS
001006	DECIMAL OF AN INCH AND OF A FOOT
701400-05	APPROACH TO LANE CLOSURE, FREEWAY/EXPRESSWAY
701406-06	LANE CLOSURE, FREEWAY/EXPRESSWAY, DAY OPERATIONS ONLY
701411-07	LANE CLOSURE, MULTILANE, AT ENTRANCES OR EXIT RAMP
701446-02	TWO LANE CLOSURE, FREEWAY/EXPRESSWAY
701901-01	TRAFFIC CONTROL DEVICES

GENERAL NOTES

G.N.-100
ENGLISH UNITS OF MEASUREMENT SHALL GOVERN OVER AND SUPERSEDE ANY METRIC UNITS SHOWN IN THIS CONTRACT. WHERE INCLUDED, METRIC UNITS ARE FOR INFORMATION ONLY.

G.N.-107.12
THE NAME, ADDRESS AND TELEPHONE NUMBER OF THE LOCAL RAILROAD CONTACT IS:

Illinois Central Railroad Mr. Hardy Taylor 1907 Marion Ave Mattoon, IL 61938 (217) 238-2443	Norfolk Southern Railroad Ms. Debbie Adams Division Office Manager-Illinois Division Norfolk Southern Railway Company 1735 East Condit Street Decatur, IL 62521 (217) 425-2042
---	--

CSX Transportation, Inc. Mr. Ben Crossman Roadmaster CSX Transportation 564 CSX Lane Danville, IL 61834 (217) 442-0126	Union Pacific Railroad Mr. David W. McKernan Manager Industry & Public Projects Union Pacific Railroad 100 North Broadway, Suite 1500 St. Louis, MO 63102 (314) 331-0682
--	--

SPECIAL ATTENTION IS CALLED TO ARTICLE 107.12 REGARDING RAILROAD FLAGGERS. THE NAME, ADDRESS AND TELEPHONE NUMBER OF THE RAILROAD CONTACT PERSON FOR FLAGGERS IS:

Illinois Central Railroad Mr. Tom Tucker 2800 Livernois Rd Troy, MI 48083 (248) 740-6227	Norfolk Southern Railroad Mr. Howard Swanson Asst. Division Engineer-Bridges Illinois Division Norfolk Southern Railway Company Illinois Division 1735 East Condit Street Decatur, IL 62521 (217) 425-2042
--	---

CSX Transportation, Inc. Dave Fette 1717 Dixie Hwy Suite 400 Fort Wright, KY 41011 859-344-8137	Union Pacific Railroad Mr. Chris Keckeisen Track Supervisor Union Pacific Railroad 811W. Chestnut Bloomington, IL 61701 (402) 501-3734
--	--

G.N. - PAVEMENT MARKINGS AND MARKERS
EXISTING PAVEMENT MARKINGS AND RAISED REFLECTIVE PAVEMENT MARKERS SHALL BE TEMPORARILY COVERED PRIOR TO APPLICATION OF THE DECK SURFACE TREATMENT, TO PREVENT THE MATERIAL FROM BEING APPLIED TO THE MARKINGS AND MARKERS. THE TEMPORARY COVERING SHALL BE REMOVED AFTER APPLICATION OF THE DECK SURFACE TREATMENT AND PRIOR TO OPENING TO TRAFFIC. COST IS INCLUDED WITH THE DECK SURFACE TREATMENT SPECIFIED.

G.N. - RAILROAD PROTECTIVE LIABILITY INSURANCE (RRPLI)
DUE TO THE MULTIPLE CROSSINGS AND MULTIPLE RAILROAD COMPANIES IN THIS CONTRACT. ONLY ONE (1) RRPLI POLICY WILL BE REQUIRED FOR EACH SEPARATE RAILROAD COMPANY.

NO COMMITMENTS

•FY2011 BRIDGE DECK SEALING
••CHAMPAIGN, MCLEAN & VERMILION

FILE NAME =	USER NAME = ceer-lock_jd	DESIGNED - TJB	REVISED -	STATE OF ILLINOIS DEPARTMENT OF TRANSPORTATION	INDEX OF SHEETS, LIST OF HIGHWAY STANDARDS & GENERAL NOTES	F.A.I. RTE.	SECTION	COUNTY	TOTAL SHEETS	SHEET NO.
es:\pw_work\pwsdot\ceer-lock_jd\0185207\070861-sht-gennote.dgn		DRAWN - BBP	REVISED -			74		••	19	4
PLOT SCALE = 40.0000 / IN.		CHECKED -	REVISED -		SCALE: NONE					
PLOT DATE = 11/15/2010		DATE - 09/20/10	REVISED -		SHEET NO. 1 OF 1 SHEETS					CONTRACT NO. 70861
					STA.					ILLINOIS FED. AID PROJECT

SUMMARY OF QUANTITIES

LOCATION OF WORK:

FAI ROUTE 74 SECTION FY 2011 BRIDGE DECK SEALING MULTI-LANE INTERSTATE (FOUR AND SIX LANES) FUNDING 100% STATE BRIDGE PREVENTATIVE MAINTENANCE 0044							
CHAMPAIGN COUNTY		MCLEAN COUNTY		VERMILION COUNTY			
RURAL	URBAN	RURAL	URBAN	RURAL	URBAN	RURAL	URBAN

CONSTRUCTION TYPE CODE:

CODE NO	ITEM	UNIT	TOTAL QUANTITY	QUANTITY	QUANTITY	QUANTITY	QUANTITY	QUANTITY	QUANTITY
50300300	PROTECTIVE COAT	SQ YD	118,218.0	11,489.0	26,279.0	5,858.0	36,558.0	3,774.0	34,260.0
67100100	MOBILIZATION	L SUM	1.0	0.10	0.20	0.05	0.30	0.05	0.30
70100420	TRAFFIC CONTROL AND PROTECTION, STANDARD 701411	EACH	50.0	5.0	14.0	1.0	15.0	2.0	13.0
70100700	TRAFFIC CONTROL AND PROTECTION, STANDARD 701406	L SUM	1.0	0.15	0.10	0.25	0.15	0.05	0.30
70100815	TRAFFIC CONTROL AND PROTECTION, STANDARD 701446	L SUM	1.0	0.33	0.33	0.33	0.67	0.67	0.67
X7015005	CHANGEABLE MESSAGE SIGN	CAL DA	181.0	21.0	30.0	33.0	67.0	4.0	26.0
Z0048665	RAILROAD PROTECTIVE LIABILITY INSURANCE	L SUM	1.0	0.15	0.05	0.15	0.25	0.25	0.40

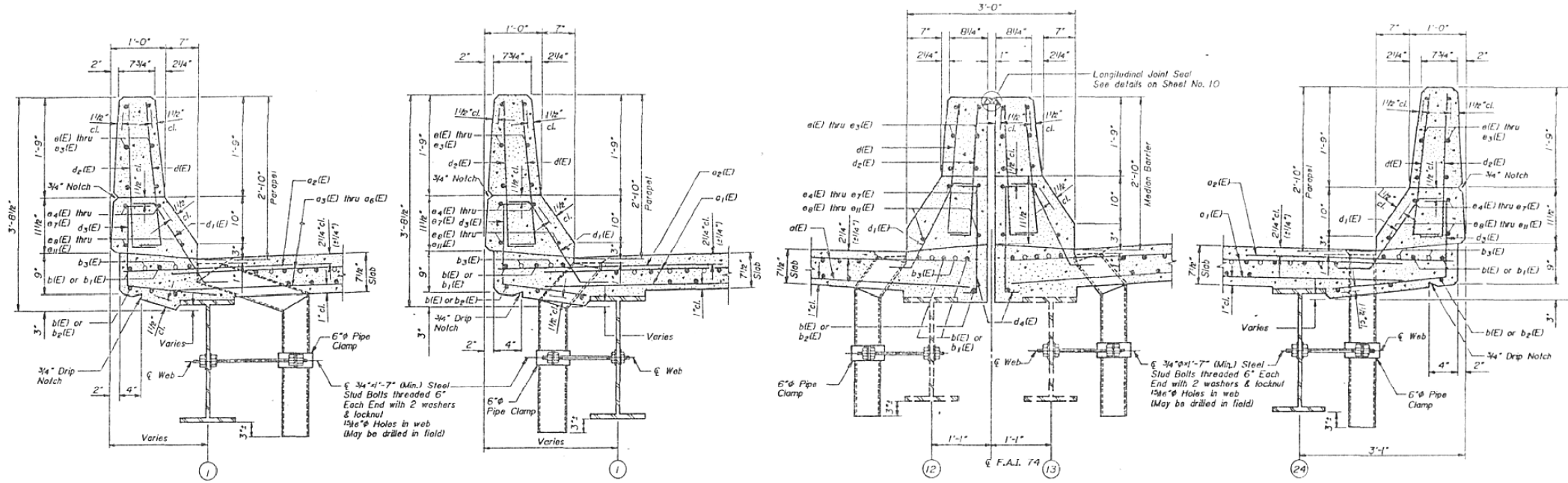
NO SPECIALTY ITEMS

•FY2011 BRIDGE DECK SEALING
 **CHAMPAIGN, MCLEAN & VERMILION

FILE NAME =	USER NAME = ceerlock_jd	DESIGNED - TJB	REVISED -	STATE OF ILLINOIS DEPARTMENT OF TRANSPORTATION	SUMMARY OF QUANTITIES	F.A.I. RTE.	SECTION	COUNTY	TOTAL SHEETS	SHEET NO.	
ct:\pwwork\pwwork\ceerlock_jd\0185207-0570861-shr-500.dgn	DRAWN - BBP	CHECKED -	REVISED -			74	*	**	19	5	
PLOT SCALE = 40,0000 / IN.	DATE - 09/20/10	REVISOR -	REVISOR -			SCALE: NONE		SHEET NO. 1 OF 1 SHEETS		STA. TO STA.	
PLOT DATE = 11/15/2010						CONTRACT NO. 70861 ILLINOIS FED. AID PROJECT					

STATE OF ILLINOIS
DEPARTMENT OF TRANSPORTATION

ROUTE NO.	SECTION	COUNTY	TOTAL SHEETS	SHEET NO.
F.A.I. 74	04HB-2BR	CHAMPAIGN	140	66
FED. ROAD DIST. NO. 7	ILLINOIS PROJECT			SHEET 23



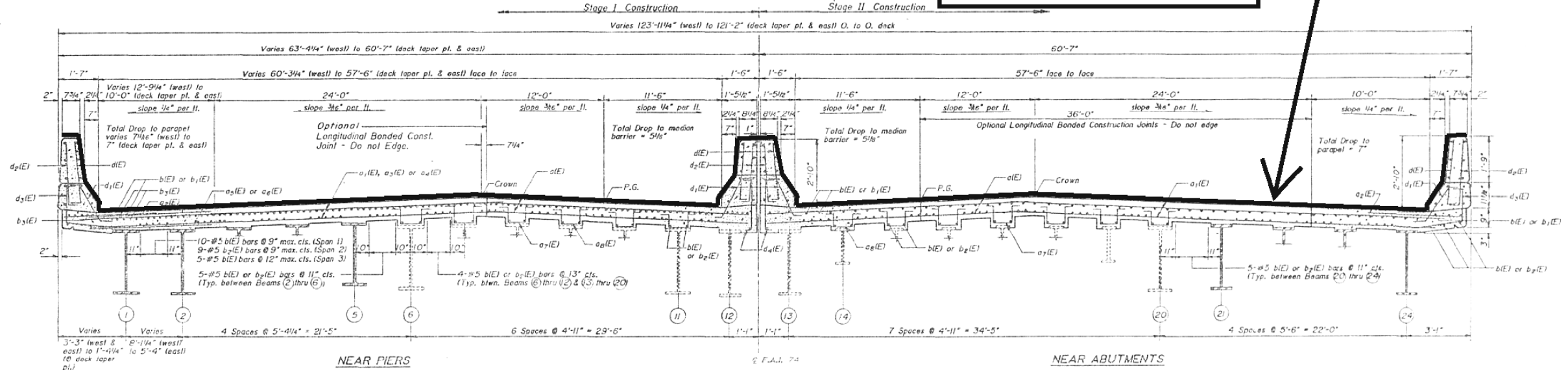
SECTION THRU NORTH PARAPET @ WEST DRAINS

SECTION THRU NORTH PARAPET @ EAST DRAINS

SECTION THRU MEDIAN BARRIER

SECTION THRU SOUTH PARAPET

PROPOSED PROTECTIVE COAT APPLICATION



NEAR PIERS

CROSS SECTION (Looking East)

NEAR ABUTMENTS

TYPICAL SECTION THRU CHAMPAIGN; SIX-LANE

SUPERSTRUCTURE DETAILS I

F.A.I. ROUTE 74
OVER MARKET STREET
SECTION 04HB-2) BR
CHAMPAIGN COUNTY
STA. 1200+06.10

BASCOR, INC.
consulting engineers and planners

DESIGNED:	GSP
CHECKED:	HE
DRAWN:	SAW
CHECKED:	GSP

*FY2011 BRIDGE DECK SEALING
**CHAMPAIGN, MCLEAN & VERMILION

FILE NAME =	USER NAME = ceorlockjd	DESIGNED -	TJB	REVISED -	
ce:\pw_work\p\dot\ceorlockjd\0185207\070861-sht-details.dgn		DRAWN -	BBP	REVISED -	
PLOT SCALE = 40.0000' / IN.		CHECKED -		REVISED -	
PLOT DATE = 11/15/2010		DATE -	09/20/10	REVISED -	

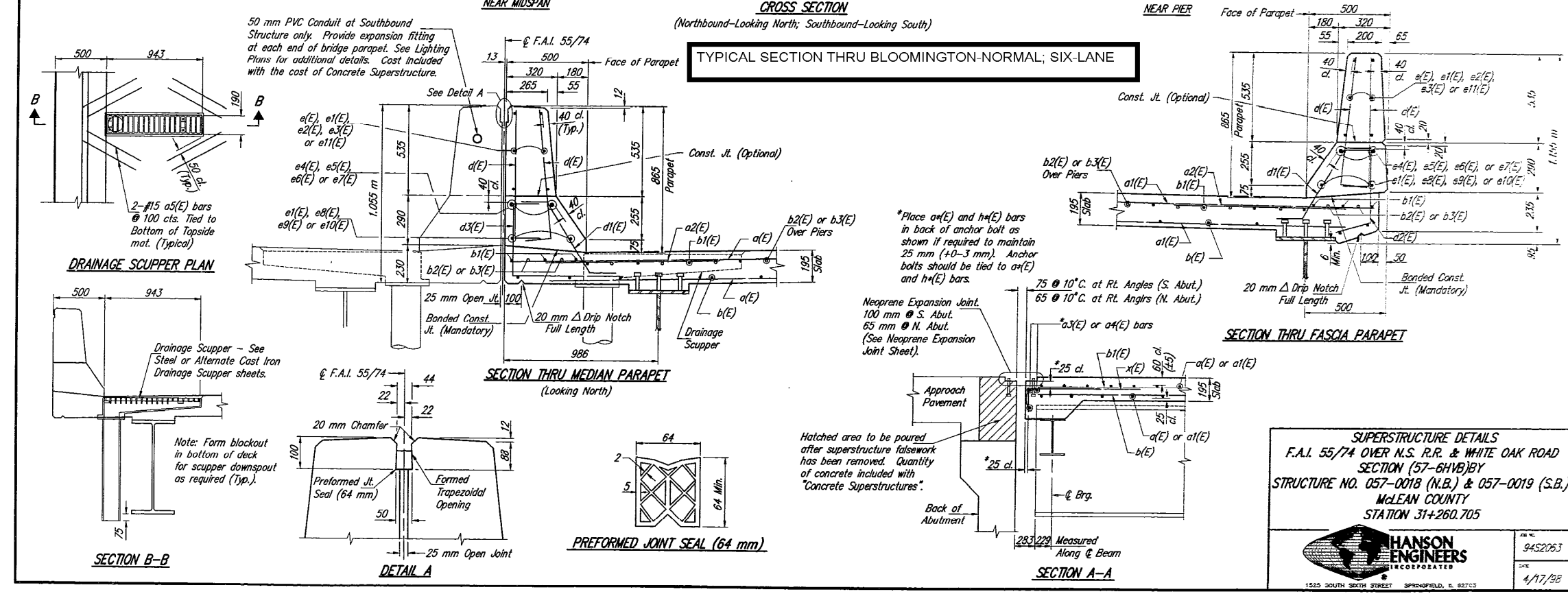
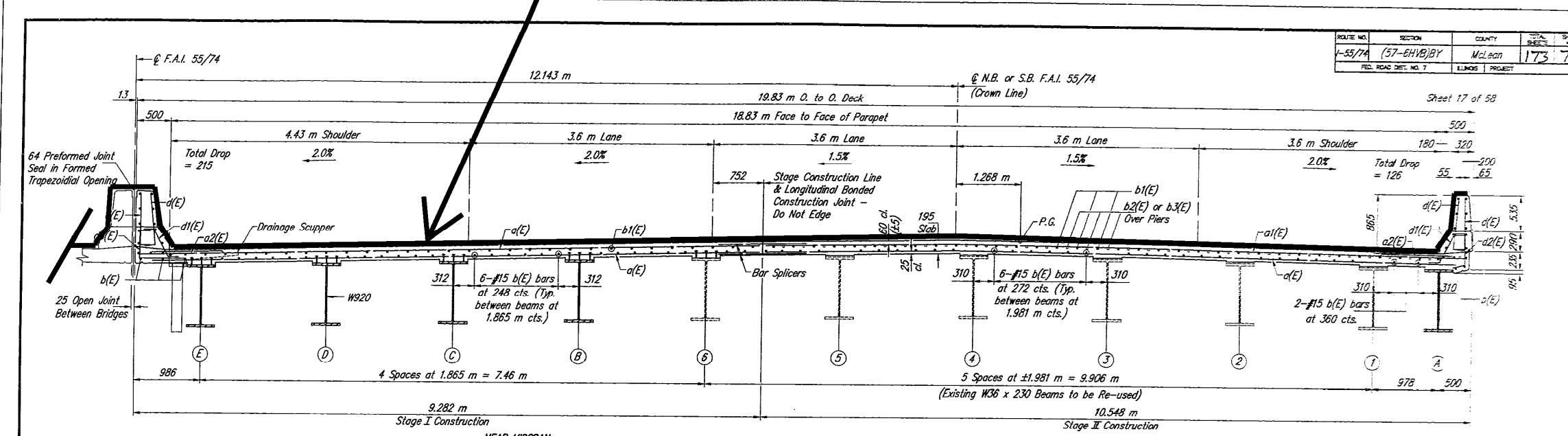
STATE OF ILLINOIS
DEPARTMENT OF TRANSPORTATION

TYPICAL SECTION THRU CHAMPAIGN; SIX-LANE		SCALE: NONE	SHEET NO. 1 OF 4 SHEETS	STA.	TO STA.
--	--	-------------	-------------------------	------	---------

F.A.I. RTE.	SECTION	COUNTY	TOTAL SHEETS	SHEET NO.
74	.	**	19	6
CONTRACT NO. 70861				
ILLINOIS FED. AID PROJECT				

PROPOSED PROTECTIVE COAT APPLICATION

ROUTE NO.	SECTION	COUNTY	SHEET NO.
1-55/74	(57-6HVB)BY	McLean	173 77
FED. ROAD DIST. NO. 7		ILLINOIS PROJECT	



SUPERSTRUCTURE DETAILS
 F.A.I. 55/74 OVER N.S. R.R. & WHITE OAK ROAD
 SECTION (57-6HVB)BY
 STRUCTURE NO. 057-0018 (N.B.) & 057-0019 (S.B.)
 MCLEAN COUNTY
 STATION 31+260.705

HANSON ENGINEERS
 INCORPORATED
 1525 SOUTH SIXTH STREET SPRINGFIELD, IL 62703

94522053
 4/17/98

FILE NAME =	USER NAME = ceorlockjd	DESIGNED - TJB	REVISED -
ce:\pw\work\p\midot\ceorlockjd\0185207\070861-sht-details.dgn		DRAWN - BBP	REVISED -
PLOT SCALE = 40.0000' / IN.		CHECKED -	REVISED -
PLOT DATE = 11/15/2010		DATE - 09/20/10	REVISED -

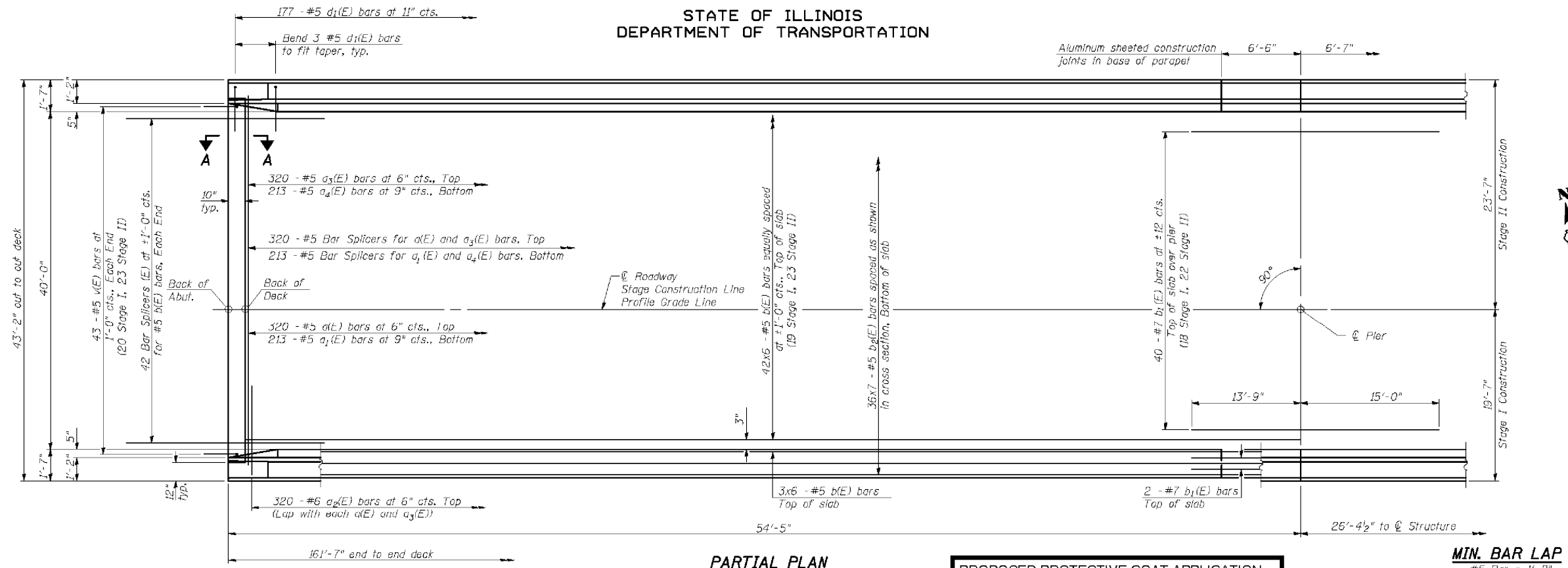
STATE OF ILLINOIS
DEPARTMENT OF TRANSPORTATION

TYPICAL SECTION THRU BLOOMINGTON-NORMAL; SIX-LANE			
SCALE: NONE	SHEET NO. 2 OF 4 SHEETS	STA.	TO STA.

F.A.I. RTE.	SECTION	COUNTY	TOTAL SHEETS	SHEET NO.
74	.	**	19	7
CONTRACT NO. 70861				
ILLINOIS FED. AID PROJECT				

*FY2011 BRIDGE DECK SEALING
 **CHAMPAIGN, MCLEAN & VERMILION

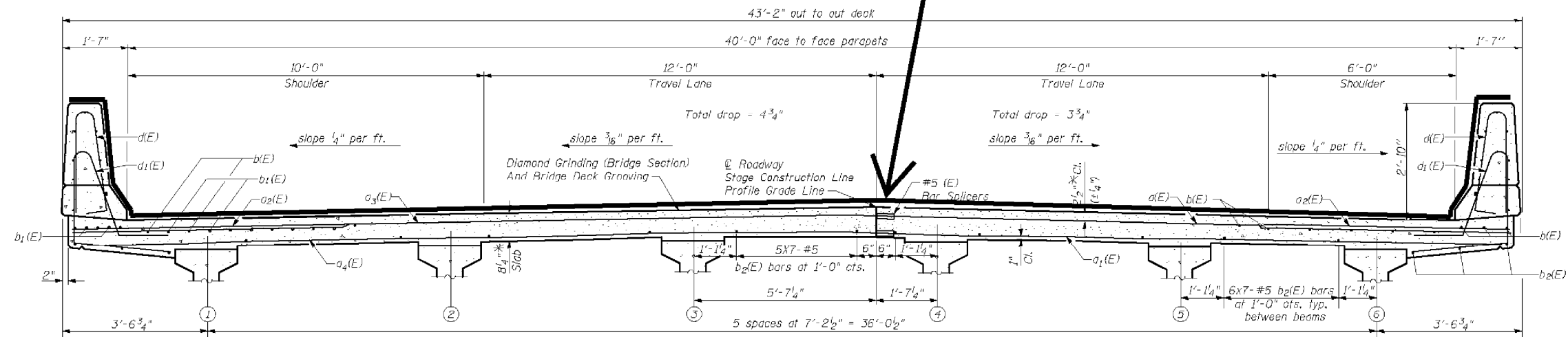
STATE OF ILLINOIS
DEPARTMENT OF TRANSPORTATION



PARTIAL PLAN

PROPOSED PROTECTIVE COAT APPLICATION

MIN. BAR LAP
#5 Bar = 1'-8"



NEAR PIER

TYPICAL SECTION; FOUR-LANE WITH PARAPET; DUAL STRUCTURES

NEAR MIDSPAN

SUPERSTRUCTURE
I-74 OVER LITTLE KICKAPOO CREEK
STRUCTURE NO. 057-0120
AND 057-0121

STRAND ASSOCIATES, INC.

DESIGNED	RRD
CHECKED	AJS
DRAWN	KAS
CHECKED	JAR

Notes:
See Sheet 12 of 27 for superstructure details and Bill of Material.
Bars indicated thus 20 x 3-#5 etc. Indicates 20 lines of bars with 3 lengths per line.
See Sheet 12 of 27 for parapet reinforcement.
See Sheet 27 of 27 for bar splicers details.
See Sheet 11 of 27 for diaphragm details.

CROSS SECTION
(Looking Upstation Westbound)
(Looking Downstation Eastbound)

* Prior to grinding

SHEET NO. 10 27 SHEETS	F.A.I. RTE.	SECTION	COUNTY	TOTAL SHEETS	SHEET NO.
	74	(57-21B)BR	MCLEAN	61	22
SUPERSTRUCTURE DETAILS (1 OF 3)			CONTRACT NO. 70641		
FED. ROAD DIST. NO. 7 ILLINOIS FED. AID PROJECT					

*FY2011 BRIDGE DECK SEALING
**CHAMPAIGN, MCLEAN & VERMILION

FILE NAME =	USER NAME = ceorlockjd	DESIGNED -	TJB	REVISED -	
ce:\pwk\work\p1dot\ceorlockjd\0185207\0570861-sht-details.dgn		DRAWN -	BBP	REVISED -	
PLOT SCALE = 40.0000' / IN.		CHECKED -		REVISED -	
PLOT DATE = 11/15/2010		DATE -	09/20/10	REVISED -	

STATE OF ILLINOIS
DEPARTMENT OF TRANSPORTATION

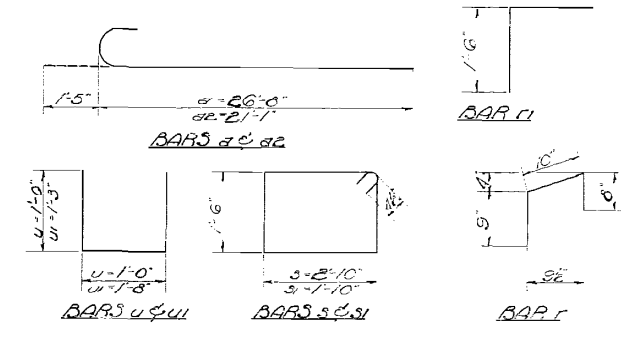
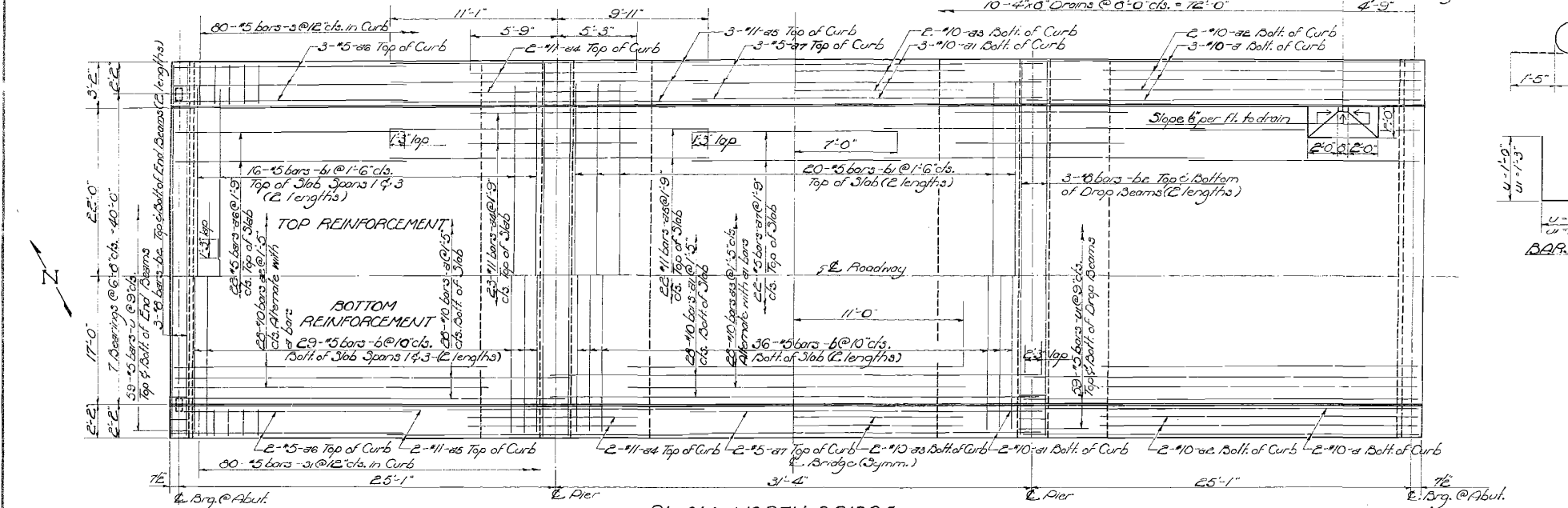
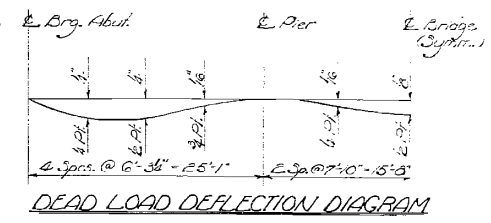
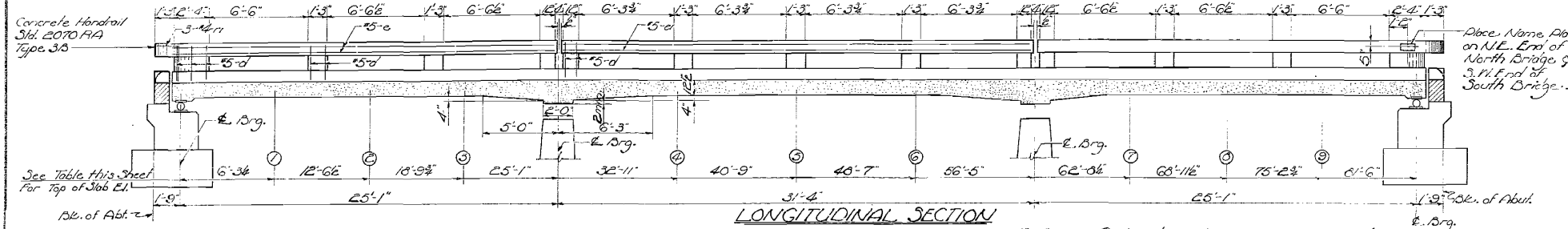
TYPICAL SECTION; FOUR-LANE WITH PARAPET;
DUAL STRUCTURES

SCALE: NONE SHEET NO. 3 OF 4 SHEETS STA. TO STA.

F.A.I. RTE.	SECTION	COUNTY	TOTAL SHEETS	SHEET NO.
74	*	**	19	8
CONTRACT NO. 70861				
ILLINOIS FED. AID PROJECT				

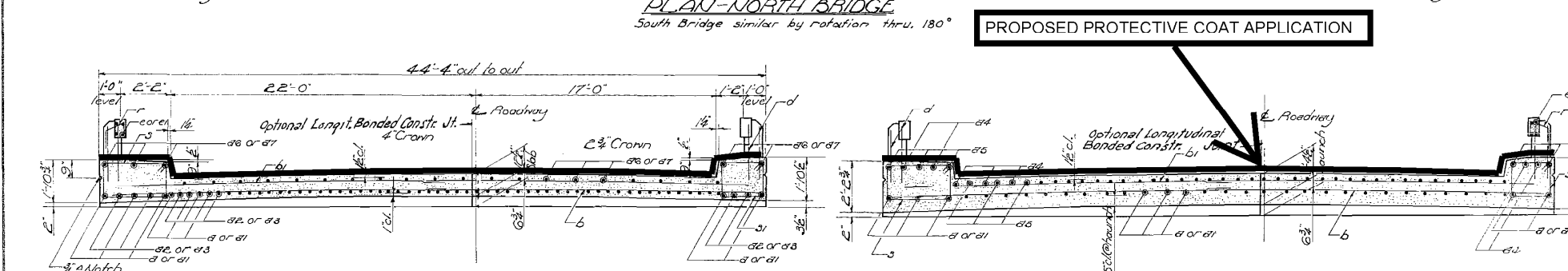
STATE OF ILLINOIS
DEPARTMENT OF PUBLIC WORKS & BUILDINGS
DIVISION OF HIGHWAYS

PROJECT NO.	SECTION	COUNTY	SHEET NO.	SHEET NO.
74	17B	MCLEAN	19	6
8 SHEETS				



BILL OF MATERIAL - C BRIDGES

Bar	No.	Size	Length	Splice
4	136	#10	22'-1"	
41	66	#10	33'-6"	
42	124	#10	22'-0"	
43	64	#10	22'-0"	
44	108	#11	11'-0"	
45	108	#11	21'-0"	
46	108	#5	15'-9"	
47	54	#5	14'-0"	
6	376	#5	22'-3"	
61	208	#5	21'-6"	
62	96	#6	23'-0"	
3	160	#5	9'-5"	
21	160	#5	7'-5"	
4	472	#5	3'-0"	
41	472	#5	4'-2"	
0'	216	#5	2'-9"	
6	32	#5	25'-6"	
61	16	#5	31'-0"	
7	112	#4	2'-3"	
71	24	#4	3'-0"	
Class A Concrete	Cu. Yds.	334.1		
Handrail Concrete	Cu. Yds.	0.0		
Reinforcement Bars	Lbs.	32,830		
Structural Steel	Lbs.	60,040		
Name Plates	Each	2		



TYPICAL SECTION; FOUR-LANE WITH CURB; DUAL STRUCTURES

Location	E. Abut. (1)	(2)	(3)	E. Pier (4)	(5)	(6)	E. Pier (7)	(8)	(9)	E. Abut. (10)			
Theoretical Elevation	755.75	755.70	755.01	755.05	755.08	755.93	755.97	756.02	756.07	756.10	756.14	756.18	756.22
Theoretical El. + D. Def.	755.75	755.00	755.03	755.06	755.08	755.93	755.98	756.02	756.07	756.11	756.16	756.20	756.22

DESIGNED: Joseph W. Linn
CHECKED: C. W. Sisk
DRAWN: R. W. Sisk
CHECKED: C. W. Sisk

EXAMINED: R. B. Berman
PASSED: R. B. Berman
APPROVED: R. B. Berman

SUPERSTRUCTURE
F.A.I. RT. 74 - SEC. 57-17B
MCLEAN COUNTY
STA. 1512+64

TOTAL STRUCTURE SCHEDULE OF QUANTITIES

ACTUAL MEASUREMENTS

TOTAL STRUCTURE SCHEDULE OF QUANTITIES																							
ACTUAL MEASUREMENTS																							
SN	ROUTE CARRIED	FEATURE CROSSED	SIMS INFORMATION		DECK			APPROACH SLABS					PARAPETS (HUB, FACE & TOP)			TYPE B CURB (FACE & TOP)			GRAND TOTAL (SQ YD)	RURAL	URBAN		
					LENGTH (E-E)	WIDTH (F-F)	TOTAL AREA (SY)	TOTAL LENGTH (FT)	LENGTH INSIDE PARAPET (FT)	WIDTH INSIDE PARAPET (FT)	LENGTH BEYOND PARAPET (FT)	WIDTH BEYOND PARAPET (O-O)	TOTAL AREA (SY)	HEIGHT	LENGTH		TOTAL AREA (SY)	HEIGHT				LENGTH	TOTAL AREA (SY)
			LENGTH	WIDTH		3.6 FT TYPICAL	ALONG DECK (FT)	ALONG APPR. (FT)	9 INCH TYPICAL	ALONG APPR. PVT.													
057-0133	I-74 EB	N FORK SALT CREEK	139.0	43.2	136.7	40.0	607.4	30.0	0	40.0	30.0	43.2	288.0	3.60	136.7	0.0	109.3	0.75	30.0	10.0	1015.0	X	
057-0134	I-74 WB	N FORK SALT CREEK	139.0	43.2	136.7	40.0	607.4	30.0	0	40.0	30.0	43.2	288.0	3.60	136.7	0.0	109.3	0.75	30.0	10.0	1015.0	X	
057-0233	I-55/I-74 NB	COUNTY RD SUDDITH RD	156.0	65.1	153.7	61.9	1056.9	30.0	15	61.9	15.0	65.1	423.3	3.60	153.7	15.0	146.9	0.75	15.0	5.0	1633.0		X
057-0234	I-55/I-74 SB	COUNTY RD SUDDITH RD	156.0	65.1	153.7	61.9	1056.9	30.0	15	61.9	15.0	65.1	423.3	3.60	153.7	15.0	146.9	0.75	15.0	5.0	1633.0		X
092-0003	I-74 (EB)	MIDDLEFORK VERM RIV	364.5	36.7	362.2	33.5	1348.1	30.0	12	33.5	18.0	33.5	223.3	3.60	362.2	12.0	308.9	0.75	18.0	6.0	1887.0	X	
092-0004	I-74 (WB)	MIDDLEFORK VERM RIV	364.5	36.7	362.2	33.5	1348.1	30.0	12	33.5	18.0	33.5	223.3	3.60	362.2	12.0	308.9	0.75	18.0	6.0	1887.0	X	
092-0006	I-74 (EB)	SALT FORK VERM RIVER	750.2	36.0	750.2	32.8	2734.1	0.0	0	32.8	0.0	36.0	0.0	3.60	750.2	12.0	619.4	0.00	0.0	0.0	3354.0		X
092-0007	I-74 (WB)	SALT FORK VERM RIVER	750.2	36.0	750.2	32.8	2734.1	0.0	0	32.8	0.0	36.0	0.0	3.60	750.2	12.0	619.4	0.00	0.0	0.0	3354.0		X
092-0008	I-74 (EB)	N&S & FAU 7026(L ST)	277.4	43.2	275.1	40.0	1222.5	20.0	12	40.0	8.0	40.0	177.8	3.60	275.1	12.0	239.3	0.75	8.0	2.7	1643.0		X
092-0009	I-74 (WB)	N&S & FAU 7026(L ST)	317.5	51.2	315.2	48.0	1680.9	20.0	12	55.0	8.0	55.0	244.4	3.60	315.2	12.0	271.3	0.75	8.0	2.7	2200.0		X
092-0010	I-74 (EB)	"G" ST(FAU 7026)	117.6	44.0	115.3	40.8	522.6	30.0	12	40.8	18.0	40.8	272.0	3.60	115.3	12.0	111.4	0.75	18.0	6.0	912.0		X
092-0011	I-74 (WB)	"G" ST(FAU 7026)	117.6	44.0	115.3	40.8	522.6	30.0	12	40.8	18.0	40.8	272.0	3.60	115.3	12.0	111.4	0.75	18.0	6.0	912.0		X
092-0012	I-74 (WB)	CNRL & FR1563 & 1611	237.8	44.7	235.5	41.5	1085.8	22.2	12	41.5	10.2	41.5	204.7	3.60	235.5	12.0	207.6	0.00	10.2	0.0	1499.0		X
092-0013	I-74 (EB)	CNRL & FR1563 & 1611	237.8	55.0	235.5	53.5	1399.7	24.4	12	53.5	12.4	53.5	290.1	3.60	235.5	12.0	207.6	0.00	12.4	0.0	1898.0		X
092-0014	I-74 (WB)	VERMILION RIVER	583.8	43.2	581.5	40.0	2584.3	56.5	12	40.0	44.5	40.0	502.2	3.60	581.5	12.0	484.4	0.00	44.5	0.0	3571.0		X
092-0015	I-74 (EB)	VERMILION RIVER	583.8	43.2	581.5	44.1	2849.2	57.7	12	44.1	45.7	44.1	585.5	3.60	581.5	12.0	484.4	0.00	45.7	0.0	3900.0		X
092-0018	I-74 (EB)	STONY CREEK	257.0	42.2	254.7	39.0	1103.6	50.0	15	39.0	35.0	40.0	441.1	3.60	254.7	15.0	227.7	0.00	35.0	0.0	1773.0		X
092-0019	I-74 (WB)	STONY CREEK	257.0	42.2	254.7	39.0	1103.6	50.0	15	39.0	35.0	40.0	441.1	3.60	254.7	15.0	227.7	0.00	35.0	0.0	1773.0		X
092-0023	I-74(WB)&RAMP	CSX RR & MS 9010	271.0	63.8	268.7	60.6	1809.0	50.0	15	60.6	35.0	60.6	673.3	3.60	268.7	15.0	238.9	0.75	35.0	11.7	2733.0		X
092-0024	I-74(EB)	CSX RR & MS 9010	271.0	43.2	268.7	40.0	1194.1	50.0	15	40.0	35.0	40.0	444.4	3.60	268.7	15.0	238.9	0.75	35.0	11.7	1890.0		X
092-0025	I-74 (WB)	RAMP 22.31	157.6	43.7	155.3	40.5	698.7	50.0	15	40.5	35.0	40.5	450.0	3.60	155.3	15.0	148.2	0.75	35.0	11.7	1309.0		X
092-0026	I-74 & RAMP	RAMPS 21.94/22.31	157.6	51.8	155.3	48.6	838.5	50.0	15	48.6	35.0	48.6	540.0	3.60	155.3	15.0	148.2	0.75	35.0	11.7	1539.0		X
GRAND TOTALS (SQ YD):																			118,218	21,121	97,097		

*FY2011 BRIDGE DECK SEALING
**CHAMPAIGN, MCLEAN & VERMILION

TOTAL STRUCTURE SCHEDULE OF QUANTITIES TRAFFIC CONTROL & PROTECTION

			TOTAL STRUCTURE SCHEDULE OF QUANTITIES																					
			RAILROAD COORDINATION					TRAFFIC CONTROL & PROTECTION					PROSECUTION & PROGRESS											
SN	ROUTE CARRIED	FEATURE CROSSED	OWNER	DOT/AAR NO.	MILE POST	FLAGGER REQUIRED	RRPLI REQUIRED	STANDARD 701400	STANDARD 701406	STANDARD 701411 (DL ONLY)	STANDARD 701446	LOCATION	SUMMARY	CHANGEABLE MESSAGE SIGN (Calendar Days)	ESTIMATED WORKING DAYS	PROSECUTION	RURAL	URBAN						
092-0003	I-74 (EB)	MIDDLEFORK VERM RIV						1	1	1		4	4-701400 SET-UPS (2 DL; 2 PL) 4-701406 SET-UPS (2 DL; 2 PL) 4-701411 SET-UPS (2 EB; 2 WB) 2-WD'S (1 DL; 1 PL); 4-STRUCT.	2-CMS (1 EB; 1 WB); 7 CALENDAR DAYS PRIOR; 8 WORKING DAYS; 15 DAYS EACH DIRECTION; TOTAL 30 CALENDAR DAYS; 18 VERMILION COUNTY STRUCTURES ON FAI 74	2	1 DAY DRIVING LANES WB & EB 1 DAY PASSING LANES WB & EB	X							
092-0004	I-74 (WB)	MIDDLEFORK VERM RIV					1	1	1											X				
092-0006	I-74 (EB)	SALT FORK VERM RIVER					1	1	1												X			
092-0007	I-74 (WB)	SALT FORK VERM RIVER					1	1	1												X			
092-0008	I-74 (EB)	N&S & FAU 7026(L ST)	NSRR	479 871J	304.45	YES	YES	1	1			3	4-701400 SET-UPS (2 DL; 2 PL) 4-701406 SET-UPS (2 DL; 2 PL) 4-701411 SET-UPS (2 EB; 2 WB) 2-WD'S (1 DL; 1 PL); 6-STRUCT.		2	1 DAY DRIVING LANES WB & EB 1 DAY PASSING LANES WB & EB		X						
092-0009	I-74 (WB)	N&S & FAU 7026(L ST)	NSRR	479 871J	304.45	YES	YES	1	1													X		
092-0010	I-74 (EB)	"G" ST(FAU 7026)						INCL.	INCL.	1													X	
092-0011	I-74 (WB)	"G" ST(FAU 7026)						INCL.	INCL.	1													X	
092-0012	I-74 (WB)	CNRL & FR1563 & 1611	CSX	542 383 B	125.45	YES	YES	1	1	1													X	
092-0013	I-74 (EB)	CNRL & FR1563 & 1611	CSX	542 383 B	125.45	YES	YES	1	1	1													X	
092-0014	I-74 (WB)	VERMILION RIVER						1	1	1		2	4-701400 SET-UPS (2 DL; 2 PL) 4-701406 SET-UPS (2 DL; 2 PL) 4-701411 SET-UPS (2 EB; 2 WB) 2-WD'S (1 DL; 1 PL); 4-STRUCT.		2	1 DAY DRIVING LANES WB & EB 1 DAY DRIVING LANES WB & EB		X						
092-0015	I-74 (EB)	VERMILION RIVER					1	1	1													X		
092-0018	I-74 (EB)	STONY CREEK					1	1	1													X		
092-0019	I-74 (WB)	STONY CREEK					1	1	1													X		
092-0023	I-74(WB)&RAMP	CSX RR & MS 9010	CSX	353 719 Y	127.76	YES	YES	1	1	1		1	4-701400 SET-UPS (2 DL; 2 PL) 4-701406 SET-UPS (2 DL; 2 PL) 3-701411 SET-UPS (1 EB; 2 WB) 2-WD'S (1 DL; 1 PL); 4 STRUCT.		2	1 DAY DRIVING LANES WB & EB 1 DAY PASSING LANES WB & EB		X						
092-0024	I-74(EB)	CSX RR & MS 9010	CSX	353 719 Y	127.76	YES	YES	1	1													X		
092-0025	I-74 (WB)	RAMP 22.31						1	1	1													X	
092-0026	I-74 & RAMP	RAMPS 21.94/22.31						1	1	1													X	
TOTAL TC&P SET-UPS; LOCATIONS; CMS CALENDAR DAYS; ESTIMATED WORKING DAYS:								60	48	50	12	14	181	36										

*FY2011 BRIDGE DECK SEALING
**CHAMPAIGN, MCLEAN & VERMILION

FILE NAME =	USER NAME = ceerlockjd	DESIGNED - TJB	REVISED -	STATE OF ILLINOIS DEPARTMENT OF TRANSPORTATION	TOTAL STRUCTURE SCHEDULE OF QUANTITIES TRAFFIC CONTROL & PROTECTION	DRAWN - BBP	REVISED -	SCALE: NONE	SHEET NO. 2 OF 2 SHEETS	STA.	TO STA.	F.A.I. RTE. 74	SECTION *	COUNT **	TOTAL SHEETS 19	SHEET NO. 13		
	ct:\pw\work\pwork\ceerlockjd\0185207\09																	
		PLOT SCALE = 40.0000 ' / IN.	CHECKED -			REVISED -												
		PLOT DATE = 11/15/2010	DATE - 09/20/10			REVISED -												
CONTRACT NO. 70861 ILLINOIS FED. AID PROJECT																		

CHAMPAIGN COUNTY STRUCTURES ACTUAL MEASUREMENTS

CHAMPAIGN COUNTY STRUCTURES SCHEDULE OF QUANTITIES																							
ACTUAL MEASUREMENTS																							
SN	ROUTE CARRIED	FEATURE CROSSED	SIMS INFORMATION		DECK			APPROACH SLABS					PARAPETS (HUB, FACE & TOP)			TYPE B CURB (FACE & TOP)			GRAND TOTAL (SQ YD)	RURAL	URBAN		
					LENGTH (E-E)	WIDTH (F-F)	TOTAL AREA (SY)	TOTAL LENGTH (FT)	LENGTH INSIDE PARAPET (FT)	WIDTH INSIDE PARAPET (FT)	LENGTH BEYOND PARAPET (FT)	WIDTH BEYOND PARAPET (O-O)	TOTAL AREA (SY)	HEIGHT	LENGTH		TOTAL AREA (SY)	HEIGHT				LENGTH	TOTAL AREA (SY)
			LENGTH	WIDTH	3.8 FT TYPICAL	ALONG DECK (FT)	ALONG APPR. (FT)	9 INCH TYPICAL	ALONG APPR. PVT.														
010-0016	I-74(EB)	SANGAMON RIVER	350.2	46.8	392.2	46.2	2013.3	30.0	0	46.2	30.0	47.2	314.7	3.60	392.2	0.0	313.8	0.75	30.0	10.0	2652.0	X	
010-0017	I-74(WB)	SANGAMON RIVER	350.2	43.2	392.2	40.0	1743.1	30.0	0	40.0	30.0	41.0	273.3	3.60	392.2	0.0	313.8	0.75	30.0	10.0	2341.0	X	
010-0018	I-74(EB)	I-57	261.2	53.2	258.9	52.3	1504.3	50.0	13.5	52.3	36.5	40.3	483.8	3.60	258.9	13.5	228.7	0.00	36.5	0.0	2217.0		X
010-0019	I-74(WB)	I-57	261.2	53.2	258.9	52.3	1504.3	50.0	13.5	52.3	36.5	40.3	483.8	3.60	258.9	13.5	228.7	0.00	36.5	0.0	2217.0		X
010-0020	I-74	MARKET ST(FAU 7189)	146.5	121.2	144.2	115.5	1850.2	50.0	18	115.5	32.0	78.5	1020.2	3.60	144.2	18.0	288.3	0.75	32.0	10.7	3170.0		X
010-0021	I-74	IC RR & TR 158	725.0	121.2	722.7	115.2	9247.8	50.0	24	115.2	26.0	116.2	1285.6	3.60	722.7	24.0	1233.1	0.75	26.0	8.7	11776.0		X
010-0022	I-74(WB)	W FORK SALINE BRANCH	100.2	60.5	97.9	57.3	623.1	20.0	12	57.3	8.0	58.3	256.4	3.60	97.9	12.0	97.5	0.75	8.0	2.7	980.0		X
010-0023	I-74(EB)	W FORK SALINE BRANCH	100.2	60.5	97.9	57.3	623.1	20.0	12	57.3	8.0	58.3	256.4	3.60	97.9	12.0	97.5	0.75	8.0	2.7	980.0		X
010-0024	I-74	US 45(FAP 800)	186.8	97.2	184.5	91.7	1878.9	52.0	12	91.7	40.0	48.0	671.1	3.60	184.5	12.0	333.6	0.75	40.0	13.3	2897.0		X
010-0025	I-74(EB)	SALINE BRANCH	164.7	43.2	162.4	40.0	721.6	23.2	12	40.0	6.0	32.0	149.3	3.60	162.4	12.0	149.1	0.00	6.0	0.0	1021.0		X
010-0026	I-74(WB)	SALINE BRANCH	164.7	43.2	162.4	40.0	721.6	23.2	12	40.0	6.0	32.0	149.3	3.60	162.4	12.0	149.1	0.00	6.0	0.0	1021.0		X
010-0027	I-74(WB)	SALINE DRAIN DITCH	165.5	42.2	163.2	39.0	707.1	26.6	13.5	39.0	13.1	42.2	239.8	3.60	163.2	13.5	152.1	0.75	13.1	4.4	1104.0	X	
010-0028	I-74(EB)	SALINE DRAIN DITCH	165.5	42.2	163.2	39.0	707.1	26.6	13.5	39.0	13.1	42.2	239.8	3.60	163.2	13.5	152.1	0.75	13.1	4.4	1104.0	X	
010-0029	I-74(WB)	SALT FORK RIVER	164.5	42.2	162.2	39.0	702.7	20.0	10	39.0	10.0	42.2	180.4	3.60	162.2	10.0	145.7	0.75	10.0	3.3	1033.0	X	
010-0030	I-74(EB)	SALT FORK RIVER	164.5	42.2	162.2	39.0	702.7	20.0	10	39.0	10.0	42.2	180.4	3.60	162.2	10.0	145.7	0.75	10.0	3.3	1033.0	X	
010-0031	I-74(WB)	OVER UPRR	171.3	42.2	169.0	39.0	732.2	24.4	12	39.0	12.4	42.2	220.3	3.60	169.0	12.0	154.4	0.75	12.4	4.1	1111.0	X	
010-0032	I-74(EB)	OVER UPRR	171.3	42.2	169.0	39.0	732.2	24.4	12	39.0	12.4	42.2	220.3	3.60	169.0	12.0	154.4	0.75	12.4	4.1	1111.0	X	
GRAND TOTALS (SQ YD):																			37,768	11,489	26,279		

•FY2011 BRIDGE DECK SEALING
••CHAMPAIGN, MCLEAN & VERMILION

FILE NAME =	USER NAME = ceerlockjd	DESIGNED - TJB	REVISED -	STATE OF ILLINOIS DEPARTMENT OF TRANSPORTATION	CHAMPAIGN COUNTY STRUCTURES ACTUAL MEASUREMENTS	F.A.I. RTE.	SECTION	COUNTY	TOTAL SHEETS	SHEET NO.	
ct:\pw_work\pwwork\ceerlockjd\0185207\0970861-sht-schedule.dgn	70861-sht-schedule.dgn	DRAWN - BBP	REVISED -			74	*	**	19	14	
PLOT SCALE = 40.0000' / IN.	CHECKED -	REVISED -				CONTRACT NO. 70861					
PLOT DATE = 11/15/2010	DATE - 09/20/10	REVISED -				SCALE: NONE	SHEET NO. 1 OF 1 SHEETS	STA.	TO STA.	ILLINOIS FED. AID PROJECT	

CHAMPAIGN COUNTY STRUCTURES ACTUAL MEASUREMENTS

CHAMPAIGN COUNTY STRUCTURES SCHEDULE OF QUANTITIES																			
			RAILROAD COORDINATION					TRAFFIC CONTROL & PROTECTION					PROSECUTION & PROGRESS						
SN	ROUTE CARRIED	FEATURE CROSSED	OWNER	DOT/AAR NO.	MILE POST	FLAGGER REQUIRED	RRPLI REQUIRED	STANDARD 701400	STANDARD 701406	STANDARD 701411 (DL ONLY)	STANDARD 701446	LOCATION	SUMMARY	CHANGEABLE MESSAGE SIGN (Calendar Days)	ESTIMATED WORKING DAYS	PROSECUTION	RURAL	URBAN	
010-0016	I-74(EB)	SANGAMON RIVER						2	2			8	4-701400; 4-701406; 1-701411; 2-WD'S; 2 STRUCTURES	3-CMS- (2 EB; 1 WB); 7 CALENDAR DAYS PRIOR; 10 WORKING DAYS; 17 DAYS EACH DIRECTION; TOTAL 51 CALENDAR DAYS; 17 CHAMPAIGN COUNTY STRUCTURES ON FAI 74	2	1 DAY DRIVING LANES WB & EB 1 DAY PASSING LANES WB & EB	X		
010-0017	I-74(WB)	SANGAMON RIVER						2	2	1								X	
010-0018	I-74(EB)	I-57						2	2	2		7	4-701400; 4-701406; 4-701411; 2-WD'S; 2 STRUCTURES			2	1 DAY DRIVING LANES WB & EB 1 DAY PASSING LANES WB & EB		X
010-0019	I-74(WB)	I-57						2	2	2									X
010-0020	I-74	MARKET ST(FAU 7169)						1		2	1								X
010-0021	I-74	IC RR & TR 158	ICRR	289 064 M	126.50		YES	1			INCL.								X
010-0022	I-74(WB)	W FORK SALINE BRANCH						INCL.		2	1								X
010-0023	I-74(EB)	W FORK SALINE BRANCH						INCL.		2	1								X
010-0024	I-74	US 45(FAP 800)						INCL.		4	1								X
010-0025	I-74(EB)	SALINE BRANCH						1	INCL.										X
010-0026	I-74(WB)	SALINE BRANCH						1	INCL.										X
010-0027	I-74(WB)	SALINE DRAIN DITCH						1	1										X
010-0028	I-74(EB)	SALINE DRAIN DITCH						1	1										X
010-0029	I-74(WB)	SALT FORK RIVER						INCL.	INCL.	1									X
010-0030	I-74(EB)	SALT FORK RIVER						INCL.	INCL.	1									X
010-0031	I-74(WB)	OVER UPRR	UPRR	166 920 M	125.60		YES	1	1	1									X
010-0032	I-74(EB)	OVER UPRR	UPRR	166 920 M	125.60		YES	1	1	1									X
TOTAL TC&P SET-UPS; LOCATIONS; CMS CALENDAR DAYS; ESTIMATED WORKING DAYS:								16	12	19	4	4		51	10				

MCLEAN COUNTY STRUCTURES ACTUAL MEASUREMENTS

MCLEAN COUNTY STRUCTURES SCHEDULE OF QUANTITIES																							
ACTUAL MEASUREMENTS																							
SN	ROUTE CARRIED	FEATURE CROSSED	SIMS INFORMATION		DECK			APPROACH SLABS					PARAPETS (HUB, FACE & TOP)			TYPE B CURB (FACE & TOP)			GRAND TOTAL (SQ YD)	RURAL	URBAN		
			LENGTH	WIDTH	LENGTH (E-E)	WIDTH (F-F)	TOTAL AREA (SY)	TOTAL LENGTH (FT)	LENGTH INSIDE PARAPET (FT)	WIDTH INSIDE PARAPET (FT)	LENGTH BEYOND PARAPET (FT)	WIDTH BEYOND PARAPET (O-O)	TOTAL AREA (SY)	HEIGHT	LENGTH		TOTAL AREA (SY)	HEIGHT				LENGTH	TOTAL AREA (SY)
														3.6 FT TYPICAL	ALONG DECK (FT)	ALONG APPR. (FT)		9 INCH TYPICAL				ALONG APPR. PVT.	
057-0006	I-55/I-74	OVER UPRR	237.0	70.8	234.7	67.6	1761.3	30.0	30	67.6	0.0	70.8	450.3	3.60	234.7	21.0	221.3	0.75	18.0	3.0	2436.0		X
057-0007	I-55/I-74 NB	ICG RR	226.0	69.0	223.7	65.8	1635.3	30.0	30	65.8	0.0	69.0	438.7	3.60	223.7	21.0	212.5	0.75	18.0	3.0	2290.0		X
057-0008	I-55/I-74 NB	SIX PTS RD/FAU 6369	130.0	65.6	127.7	62.4	885.2	30.0	30	62.4	0.0	65.6	416.0	3.60	127.7	21.0	135.7	0.75	18.0	3.0	1440.0		X
057-0009	I-55/I-74 SB	SIX PTS.RD/FAU 6369	130.0	65.6	127.7	62.4	885.2	30.0	30	62.4	0.0	65.6	416.0	3.60	127.7	21.0	135.7	0.75	18.0	3.0	1440.0		X
057-0010	I-55/I-74 SB	SUGAR CREEK	283.8	65.6	281.5	62.4	1951.5	30.0	30	62.4	0.0	65.6	416.0	3.60	281.5	21.0	258.8	0.75	18.0	3.0	2630.0		X
057-0011	I-55/I-74 NB	SUGAR CREEK	283.8	65.6	281.5	62.4	1951.5	30.0	30	62.4	0.0	65.6	416.0	3.60	281.5	21.0	258.8	0.75	18.0	3.0	2630.0		X
057-0016	I-55/I-74 NB	WASH.ST/FAU 6360	183.3	72.3	181.0	69.1	1389.4	30.0	30	69.1	0.0	72.3	460.7	3.60	181.0	21.0	178.4	0.75	18.0	3.0	2032.0		X
057-0017	I-55/I-74 SB	WASH.ST/FAU 6360	183.3	72.3	181.0	69.1	1389.4	30.0	30	69.1	0.0	72.3	460.7	3.60	181.0	21.0	178.4	0.75	18.0	3.0	2032.0		X
057-0018	I-55/I-74 NB	OLD 150 & N&W RR	448.0	65.1	445.7	61.9	3065.2	30.0	30	61.9	0.0	65.1	412.7	3.60	445.7	21.0	390.1	0.75	18.0	3.0	3872.0		X
057-0019	I-55/I-74 SB	OLD 150 & N&W RR	448.0	65.1	445.7	61.9	3065.2	30.0	30	61.9	0.0	65.1	412.7	3.60	445.7	21.0	390.1	0.75	18.0	3.0	3872.0		X
057-0043	I-74	ROCK CREEK	85.0	44.3	82.7	39.0	358.2	0.0	0	39.0	0.0	44.3	0.0	3.45	82.7	0.0	63.4	0.00	0.0	0.0	422.0	X	
057-0044	I-74	ROCK CREEK	85.0	44.3	82.7	39.0	358.2	0.0	0	39.0	0.0	44.3	0.0	3.45	82.7	0.0	63.4	0.00	0.0	0.0	422.0	X	
057-0045	I-74/WB	N. & W. RR	233.0	42.6	230.7	39.4	1009.8	30.0	12	39.4	18.0	42.6	275.5	3.60	230.7	12.0	203.7	0.75	6.0	2.0	1492.0	X	
057-0046	I-74/EB	N. & W. RR	233.0	42.6	230.7	39.4	1009.8	30.0	12	39.4	18.0	42.6	275.5	3.60	230.7	12.0	203.7	0.75	6.0	2.0	1492.0	X	
057-0047	I-74 EB	US 51/S.OF BLOOMNGTN	181.0	53.7	178.7	50.5	1002.5	0.0	0	50.5	0.0	53.7	0.0	3.60	178.7	15.0	166.9	0.00	0.0	0.0	1170.0		X
057-0048	I-74 WB	US 51/S.OF BLOOMNGTN	181.0	53.7	178.7	50.5	1002.5	0.0	0	50.5	0.0	53.7	0.0	3.60	178.7	15.0	166.9	0.00	0.0	0.0	1170.0		X
057-0120	I-74 EB	LITTLE KICKAPOO CR	163.9	43.2	161.6	40.0	718.2	30.0	0	40.0	30.0	40.8	272.0	3.60	161.6	0.0	129.3	0.75	30.0	10.0	1130.0		X
057-0121	I-74 WB	LITTLE KICKAPOO CR	163.9	43.2	161.6	40.0	718.2	30.0	0	40.0	30.0	40.8	272.0	3.60	161.6	0.0	129.3	0.75	30.0	10.0	1130.0		X
057-0125	I-74 EB	KICKAPOO CR	191.5	43.2	189.2	40.0	840.8	30.0	12	40.0	18.0	41.0	270.7	3.60	189.2	12.0	170.5	0.75	18.0	6.0	1288.0		X
057-0126	I-74 WB	LITTLE KICKAPOO CR	191.5	43.2	189.2	40.0	840.8	30.0	12	40.0	18.0	41.0	270.7	3.60	189.2	12.0	170.5	0.75	18.0	6.0	1288.0		X
057-0128	I-74 EB	LITTLE KICKAPOO CR	109.5	42.0	109.5	38.8	472.1	0.0	0	38.8	0.0	42.0	0.0	3.60	109.5	15.0	111.6	0.00	0.0	0.0	584.0		X
057-0129	I-74 WB	LITTLE KICKAPOO CR	109.5	43.2	109.5	40.0	486.7	30.0	0	40.0	30.0	41.0	273.3	3.60	109.5	0.0	87.6	0.75	30.0	10.0	858.0		X
057-0133	I-74 EB	N FORK SALT CREEK	139.0	43.2	136.7	40.0	607.4	30.0	0	40.0	30.0	43.2	288.0	3.60	136.7	0.0	109.3	0.75	30.0	10.0	1015.0	X	
057-0134	I-74 WB	N FORK SALT CREEK	139.0	43.2	136.7	40.0	607.4	30.0	0	40.0	30.0	43.2	288.0	3.60	136.7	0.0	109.3	0.75	30.0	10.0	1015.0	X	
057-0233	I-55/I-74 NB	COUNTY RD SUDDITH RD	156.0	65.1	153.7	61.9	1056.9	30.0	15	61.9	15.0	65.1	423.3	3.60	153.7	15.0	146.9	0.75	15.0	5.0	1633.0		X
057-0234	I-55/I-74 SB	COUNTY RD SUDDITH RD	156.0	65.1	153.7	61.9	1056.9	30.0	15	61.9	15.0	65.1	423.3	3.60	153.7	15.0	146.9	0.75	15.0	5.0	1633.0		X
GRAND TOTALS (SQ YD):																			42,416	5,858	36,558		

FILE NAME =	USER NAME = ceerlockjd	DESIGNED - TJB	REVISED -
ct:\pw\work\p\dot\ceerlockjd\0185207\0570861-sht-schedule.dgn		DRAWN - BBP	REVISED -
	PLOT SCALE = 40.0000' / IN.	CHECKED -	REVISED -
	PLOT DATE = 11/15/2010	DATE - 09/20/10	REVISED -

**STATE OF ILLINOIS
DEPARTMENT OF TRANSPORTATION**

**MCLEAN COUNTY STRUCTURES
ACTUAL MEASUREMENTS**

SCALE: NONE SHEET NO. 1 OF 1 SHEETS STA. TO STA.

*FY2011 BRIDGE DECK SEALING **CHAMPAIGN, MCLEAN & VERMILION	
SECTION	COUNTY
74	**
TOTAL SHEETS	SHEET NO.
19	16
CONTRACT NO. 70861	
ILLINOIS FED. AID PROJECT	

VERMILION COUNTY STRUCTURES

ACTUAL MEASUREMENTS

VERMILION COUNTY STRUCTURES SCHEDULE OF QUANTITIES																							
ACTUAL MEASUREMENTS																							
SN	ROUTE CARRIED	FEATURE CROSSED	SIMS INFORMATION		DECK			APPROACH SLABS					PARAPETS (HUB, FACE & TOP)				TYPE B CURB (FACE & TOP)			GRAND TOTAL (SQ YD)	RURAL	URBAN	
													HEIGHT	LENGTH		TOTAL AREA	HEIGHT	LENGTH	TOTAL AREA				
			LENGTH	WIDTH	LENGTH (E-E)	WIDTH (F-F)	TOTAL AREA (SY)	TOTAL LENGTH (FT)	LENGTH INSIDE PARAPET (FT)	WIDTH INSIDE PARAPET (FT)	LENGTH BEYOND PARAPET (FT)	WIDTH BEYOND PARAPET (O-O)	TOTAL AREA (SY)	3.6 FT TYPICAL	ALONG DECK (FT)	ALONG APPR. (FT)	TOTAL AREA (SY)	9 INCH TYPICAL	ALONG APPR. PVT.	TOTAL AREA (SY)			
092-0003	I-74 (EB)	MIDDLEFORK VERM RIV	364.5	36.7	362.2	33.5	1348.1	30.0	12	33.5	18.0	33.5	223.3	3.60	362.2	12.0	308.9	0.75	18.0	6.0	1887.0	X	
092-0004	I-74 (WB)	MIDDLEFORK VERM RIV	364.5	36.7	362.2	33.5	1348.1	30.0	12	33.5	18.0	33.5	223.3	3.60	362.2	12.0	308.9	0.75	18.0	6.0	1887.0	X	
092-0006	I-74 (EB)	SALT FORK VERM RIVER	750.2	36.0	750.2	32.8	2734.1	0.0	0	32.8	0.0	36.0	0.0	3.60	750.2	12.0	619.4	0.00	0.0	0.0	3354.0		X
092-0007	I-74 (WB)	SALT FORK VERM RIVER	750.2	36.0	750.2	32.8	2734.1	0.0	0	32.8	0.0	36.0	0.0	3.60	750.2	12.0	619.4	0.00	0.0	0.0	3354.0		X
092-0008	I-74 (EB)	N&S & FAU 7026(L ST)	277.4	43.2	275.1	40.0	1222.5	20.0	12	40.0	8.0	40.0	177.8	3.60	275.1	12.0	239.3	0.75	8.0	2.7	1643.0		X
092-0009	I-74 (WB)	N&S & FAU 7026(L ST)	317.5	51.2	315.2	48.0	1680.9	20.0	12	55.0	8.0	55.0	244.4	3.60	315.2	12.0	271.3	0.75	8.0	2.7	2200.0		X
092-0010	I-74 (EB)	"G" ST(FAU 7026)	117.6	44.0	115.3	40.8	522.6	30.0	12	40.8	18.0	40.8	272.0	3.60	115.3	12.0	111.4	0.75	18.0	6.0	912.0		X
092-0011	I-74 (WB)	"G" ST(FAU 7026)	117.6	44.0	115.3	40.8	522.6	30.0	12	40.8	18.0	40.8	272.0	3.60	115.3	12.0	111.4	0.75	18.0	6.0	912.0		X
092-0012	I-74 (WB)	CNRL & FR1563 & 1611	237.8	44.7	235.5	41.5	1085.8	22.2	12	41.5	10.2	41.5	204.7	3.60	235.5	12.0	207.6	0.00	10.2	0.0	1499.0		X
092-0013	I-74 (EB)	CNRL & FR1563 & 1611	237.8	55.0	235.5	53.5	1399.7	24.4	12	53.5	12.4	53.5	290.1	3.60	235.5	12.0	207.6	0.00	12.4	0.0	1898.0		X
092-0014	I-74 (WB)	VERMILION RIVER	583.8	43.2	581.5	40.0	2584.3	56.5	12	40.0	44.5	40.0	502.2	3.60	581.5	12.0	484.4	0.00	44.5	0.0	3571.0		X
092-0015	I-74 (EB)	VERMILION RIVER	583.8	43.2	581.5	44.1	2849.2	57.7	12	44.1	45.7	44.1	565.5	3.60	581.5	12.0	484.4	0.00	45.7	0.0	3900.0		X
092-0018	I-74 (EB)	STONY CREEK	257.0	42.2	254.7	39.0	1103.6	50.0	15	39.0	35.0	40.0	441.1	3.60	254.7	15.0	227.7	0.00	35.0	0.0	1773.0		X
092-0019	I-74 (WB)	STONY CREEK	257.0	42.2	254.7	39.0	1103.6	50.0	15	39.0	35.0	40.0	441.1	3.60	254.7	15.0	227.7	0.00	35.0	0.0	1773.0		X
092-0023	I-74(WB)&RAMP	CSX RR & MS 9010	271.0	63.8	268.7	60.6	1809.0	50.0	15	60.6	35.0	60.6	673.3	3.60	268.7	15.0	238.9	0.75	35.0	11.7	2733.0		X
092-0024	I-74(EB)	CSX RR & MS 9010	271.0	43.2	268.7	40.0	1194.1	50.0	15	40.0	35.0	40.0	444.4	3.60	268.7	15.0	238.9	0.75	35.0	11.7	1890.0		X
092-0025	I-74 (WB)	RAMP 22.31	157.6	43.7	155.3	40.5	698.7	50.0	15	40.5	35.0	40.5	450.0	3.60	155.3	15.0	148.2	0.75	35.0	11.7	1309.0		X
092-0026	I-74 & RAMP	RAMPS 21.94/22.31	157.6	51.8	155.3	48.6	838.5	50.0	15	48.6	35.0	48.6	540.0	3.60	155.3	15.0	148.2	0.75	35.0	11.7	1539.0		X
GRAND TOTALS (SQ YD):																				38,034	3,774	34,260	

FILE NAME =	USER NAME = ceorlockjd	DESIGNED - TJB	REVISED -
ct:\pw\work\p\dot\ceorlockjd\0185207\09	70861-sht-schedule.dgn	DRAWN - BBP	REVISED -
	PLOT SCALE = 40.0000' / IN.	CHECKED -	REVISED -
	PLOT DATE = 11/15/2010	DATE - 09/20/10	REVISED -

**STATE OF ILLINOIS
DEPARTMENT OF TRANSPORTATION**

**VERMILION COUNTY STRUCTURES
ACTUAL MEASUREMENTS**

SCALE: NONE SHEET NO. 1 OF 1 SHEETS STA. TO STA.

*FY2011 BRIDGE DECK SEALING **CHAMPAIGN, MCLEAN & VERMILION			
F.A.I. RTE.	SECTION	COUNTY	TOTAL SHEETS
74	*	**	19
			SHEET NO. 18
CONTRACT NO. 70861			
ILLINOIS FED. AID PROJECT			

VERMILION COUNTY STRUCTURES ACTUAL MEASUREMENTS

VERMILION COUNTY STRUCTURES SCHEDULE OF QUANTITIES																			
			RAILROAD COORDINATION							TRAFFIC CONTROL & PROTECTION				PROSECUTION & PROGRESS		RURAL	URBAN		
SN	ROUTE CARRIED	FEATURE CROSSED	OWNER	DOT/AAR NO.	MILE POST	FLAGGER REQUIRED	RRPLI REQUIRED	STANDARD 701400	STANDARD 701406	STANDARD 701411 (DL ONLY)	STANDARD 701446	LOCATION	SUMMARY	CHANGEABLE MESSAGE SIGN (Calendar Days)	ESTIMATED WORKING DAYS			PROSECUTION	
092-0003	I-74 (EB)	MIDDLEFORK VERM RIV						1	1	1		4	4-701400 SET-UPS (2 DL; 2 PL)	2-CMS (1EB; 1-WB); 7 CALENDAR DAYS PRIOR; 8 WORKING DAYS; 15 DAYS EACH DIRECTION; TOTAL 30 CALENDAR DAYS; 18 VERMILION COUNTY STRUCTURES ON FAI 74	2	1 DAY DRIVING LANES WB & EB; 1 DAY PASSING LANES WB & EB	X		
092-0004	I-74 (WB)	MIDDLEFORK VERM RIV						1	1	1			4-701406 SET-UPS (2 DL; 2 PL)				X		
092-0006	I-74 (EB)	SALT FORK VERM RIVER						1	1	1			4-701411 SET-UPS (2 EB; 2 WB)					X	
092-0007	I-74 (WB)	SALT FORK VERM RIVER						1	1	1			2-WD'S (1DL; 1PL); 4 STRUCT.					X	
092-0008	I-74 (EB)	N&S & FAU 7026(L ST)	NSRR	479 871 J	304.45	YES	YES	1	1			3	4-701400 SET-UPS (2 DL; 2 PL) 4-701406 SET-UPS (2 DL; 2 PL) 4-701411 SET-UPS (2 EB; 2 WB) 2-WD'S (1DL; 1PL); 6 STRUCT.		2	1 DAY DRIVING LANES WB & EB; 1 DAY PASSING LANES WB & EB		X	
092-0009	I-74 (WB)	N&S & FAU 7026(L ST)	NSRR	479 871 J	304.45	YES	YES	1	1								4-701400 SET-UPS (2 DL; 2 PL)		X
092-0010	I-74 (EB)	"G" ST(FAU 7026)						INCL.	INCL.	1							4-701406 SET-UPS (2 DL; 2 PL)		X
092-0011	I-74 (WB)	"G" ST(FAU 7026)						INCL.	INCL.	1							4-701411 SET-UPS (2 EB; 2 WB)		X
092-0012	I-74 (WB)	CNRL & FR1563 & 1611	CSX	542 383 B	125.45	YES	YES	1	1	1							2-WD'S (1DL; 1PL); 6 STRUCT.		X
092-0013	I-74 (EB)	CNRL & FR1563 & 1611	CSX	542 383 B	125.45	YES	YES	1	1	1									X
092-0014	I-74 (WB)	VERMILION RIVER						1	1	1		2	4-701400 SET-UPS (2 DL; 2 PL) 4-701406 SET-UPS (2 DL; 2 PL) 4-701411 SET-UPS (2 EB; 2 WB) 2-WD'S (1DL; 1PL); 4 STRUCT.		2	1 DAY DRIVING LANES WB & EB; 1 DAY PASSING LANES WB & EB		X	
092-0015	I-74 (EB)	VERMILION RIVER						1	1	1							4-701400 SET-UPS (2 DL; 2 PL)		X
092-0018	I-74 (EB)	STONY CREEK						1	1	1							4-701406 SET-UPS (2 DL; 2 PL)		X
092-0019	I-74 (WB)	STONY CREEK						1	1	1							4-701411 SET-UPS (2 EB; 2 WB)		X
092-0023	I-74(WB)&RAMP	CSX RR & MS 9010	CSX	353 719 Y	127.76	YES	YES	1	1	1		1	4-701400 SET-UPS (2 DL; 2 PL) 4-701406 SET-UPS (2 DL; 2 PL) 3-701411 SET-UPS (1EB; 2 WB) 2-WD'S (1DL; 1PL); 4 STRUCT.		2	1 DAY DRIVING LANES WB & EB; 1 DAY PASSING LANES WB & EB		X	
092-0024	I-74(EB)	CSX RR & MS 9010	CSX	353 719 Y	127.76	YES	YES	1	1								4-701400 SET-UPS (2 DL; 2 PL)		X
092-0025	I-74 (WB)	RAMP 22.31						1	1	1				4-701406 SET-UPS (2 DL; 2 PL)				X	
092-0026	I-74 & RAMP	RAMPS 21.94/22.31						1	1	1				3-701411 SET-UPS (1EB; 2 WB)				X	
TOTAL TC&P SET-UPS; LOCATIONS; CMS CALENDAR DAYS; ESTIMATED WORKING DAYS:								16	16	15	0	4	30	8					

*FY2011 BRIDGE DECK SEALING
**CHAMPAIGN, MCLEAN & VERMILION