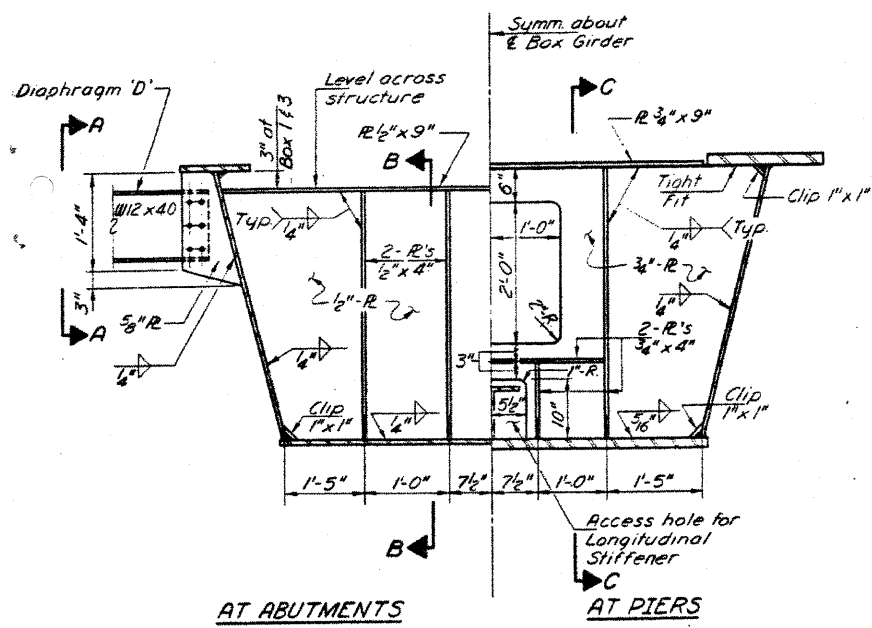
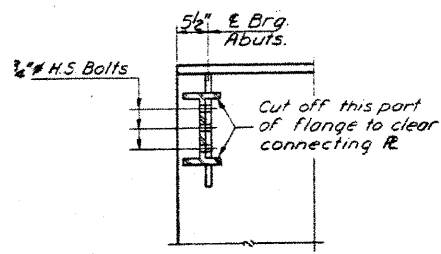


STATE OF ILLINOIS
DEPARTMENT OF TRANSPORTATION

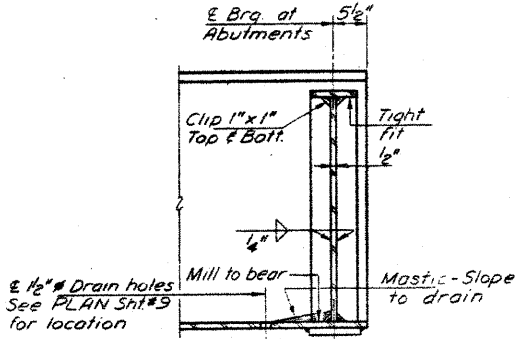
ROUTE NO.	SECTION	COUNTY	TOTAL SHEETS	SHEET NO.	SHEET NO. 10
S.A. 17A	102BR	SHELBY	4-1	22	18 SHEETS
PER ROAD DIST. NO. 7		ALIGNED	PER AID PROJECT		



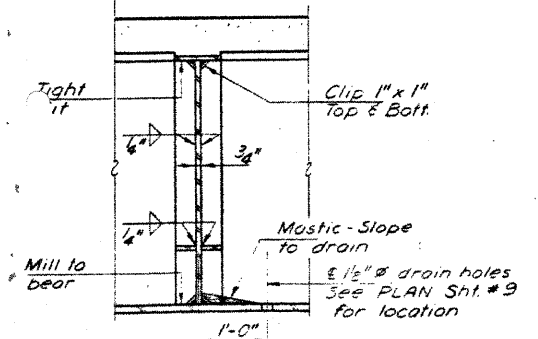
SECTION AT BEARINGS



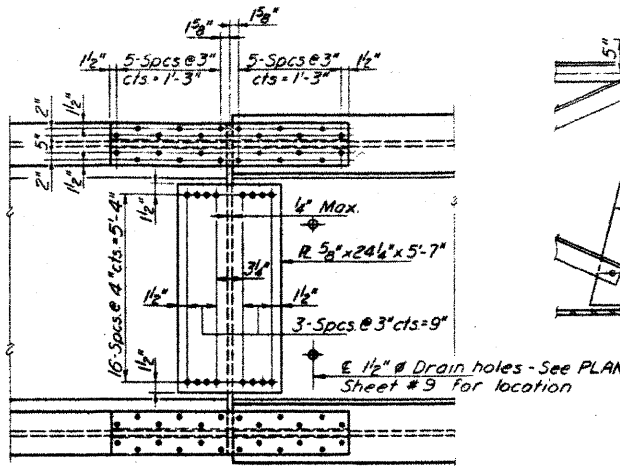
SECTION A-A



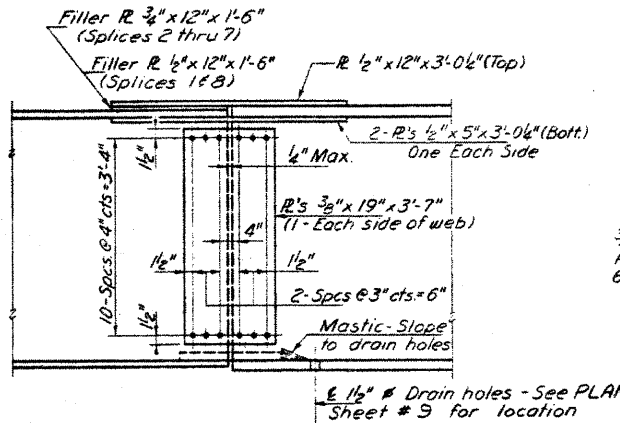
SECTION B-B



SECTION C-C

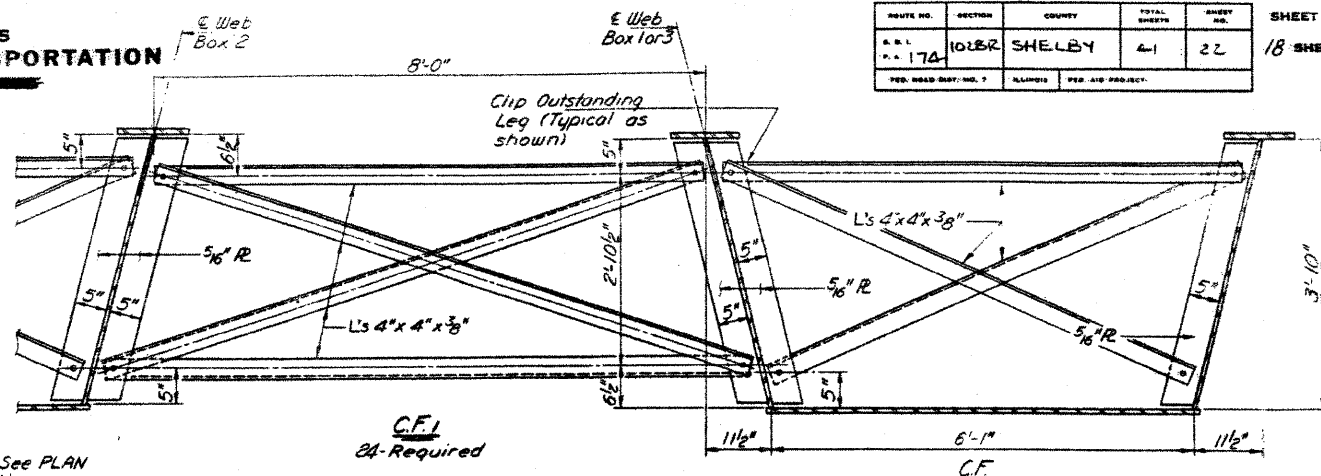


PLAN-FLANGE SPLICES



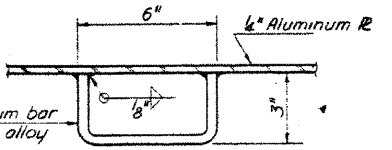
ELEVATION-WEB SPLICES

Note: All plates in splices shall conform to N.T.R.



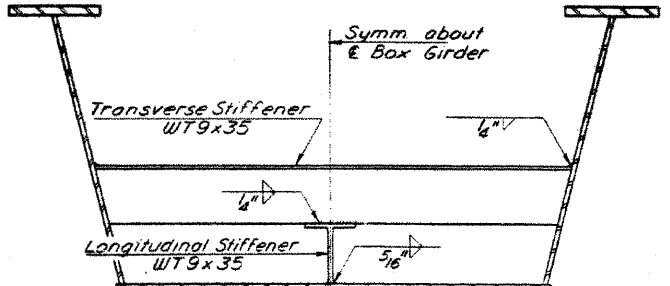
SECTION SHOWING C.F. & C.F.I

108-Required
Cross frames C.F. shall be placed in the shop and cross frames C.F.I shall be placed in the field with the exception of the 5/8 inch R which shall be shop welded. Both C.F. & C.F.I shall remain in place during placement and curing of the concrete deck, after which these cross frames along with the deck forms shall be removed. See PLAN Sht #9 for location.

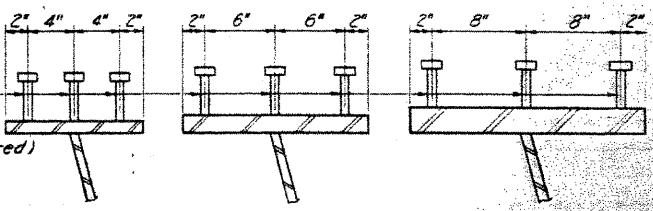


HANDLE DETAIL

** Use "H" = 4" for a fillet height of 2" or less. With more than 2" fillets increase "H" to maintain not less than 2" penetration above bottom of slab.

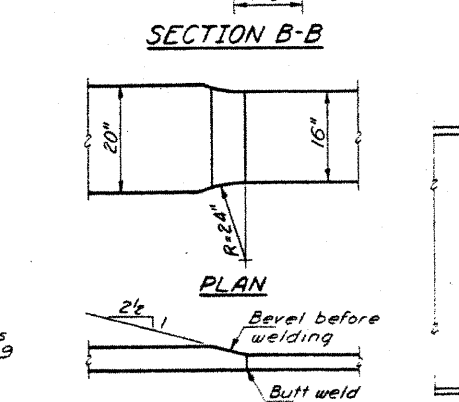


SECTION AT TRANSVERSE STIFFENER

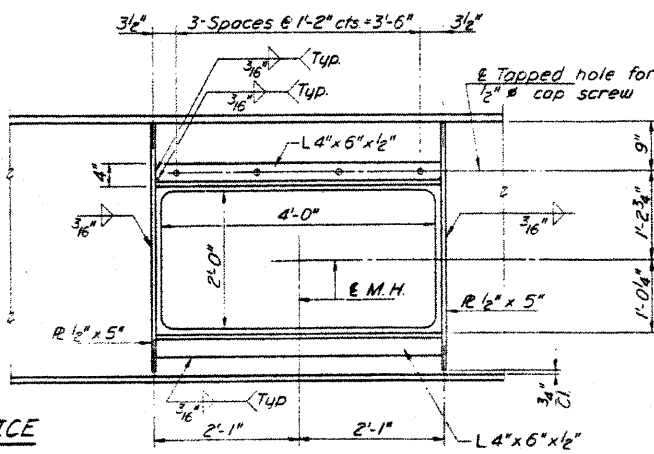


SHEAR STUDS

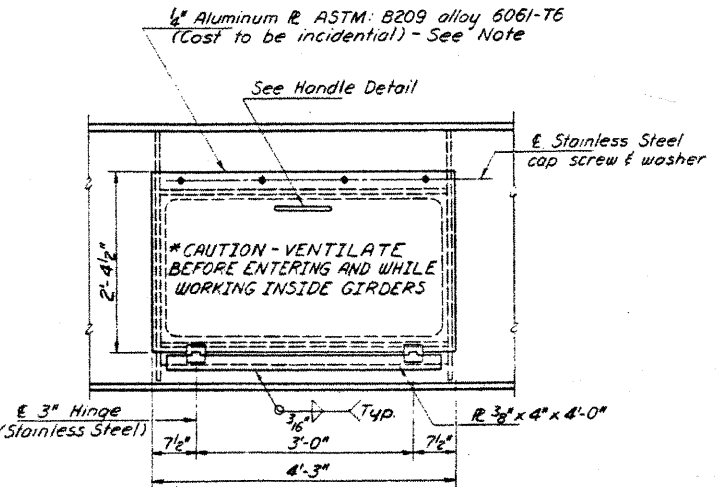
See Sht #9 for spacing



DETAIL OF SHOP FLANGE SPLICE
(For different plate width only)



INSIDE VIEW



OUTSIDE VIEW

MANHOLE DETAILS
(Manholes shall be located in an inside web of each Box Girder in east Span.)

Note: The exterior surface of the aluminum access door shall be cleaned and given a washcoat pretreatment in accordance with the Steel Structures Painting Council's Specifications SSPC-SP1 and SSPC-PT3 followed by the basic lead silico chromate painting specified for structural steel.

FOR INFORMATION ONLY

DESIGNED	Charles Miller
CHECKED	Stanley
DRAWN	GM Ritchie
CHECKED	S.L.

EXAMINED	Sept 8, 1972
PASSED	
APPROVED	

STRUCTURAL STEEL DETAILS
S.B.I. RT. 128-SEC. 102BR
SHELBY COUNTY
STA. 663+82.5