

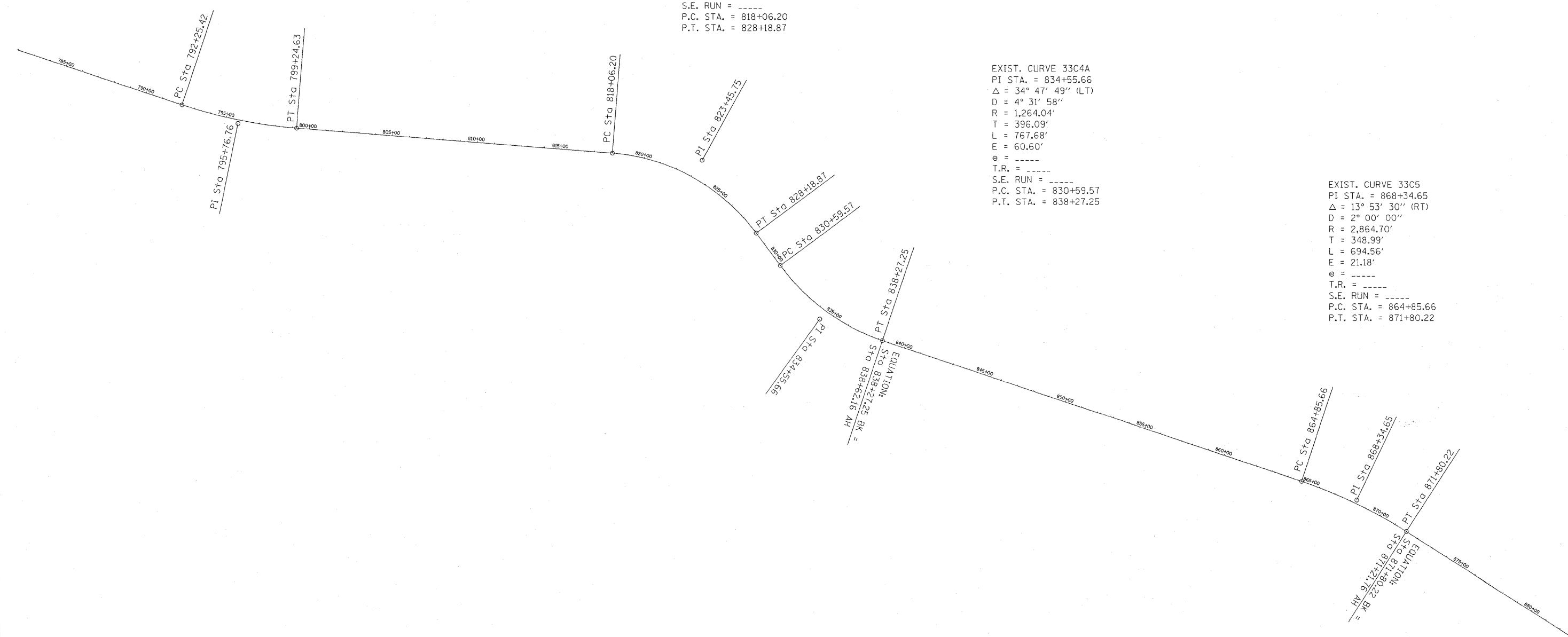


EXIST. CURVE 33C2  
 PI STA. = 795+76.76  
 $\Delta = 13^\circ 57' 30''$  (LT)  
 D = 1° 59' 47"  
 R = 2,870.10'  
 T = 351.34'  
 L = 699.21'  
 E = 21.42'  
 e = -----  
 T.R. = -----  
 S.E. RUN = -----  
 P.C. STA. = 792+25.42  
 P.T. STA. = 799+24.63

EXIST. CURVE 33C3A  
 PI STA. = 823+45.75  
 $\Delta = 48^\circ 56' 45''$  (RT)  
 D = 4° 50' 00"  
 R = 1,185.43'  
 T = 539.55'  
 L = 1,012.67'  
 E = 117.01'  
 e = -----  
 T.R. = -----  
 S.E. RUN = -----  
 P.C. STA. = 818+06.20  
 P.T. STA. = 828+18.87

EXIST. CURVE 33C4A  
 PI STA. = 834+55.66  
 $\Delta = 34^\circ 47' 49''$  (LT)  
 D = 4° 31' 58"  
 R = 1,264.04'  
 T = 396.09'  
 L = 767.68'  
 E = 60.60'  
 e = -----  
 T.R. = -----  
 S.E. RUN = -----  
 P.C. STA. = 830+59.57  
 P.T. STA. = 838+27.25

EXIST. CURVE 33C5  
 PI STA. = 868+34.65  
 $\Delta = 13^\circ 53' 30''$  (RT)  
 D = 2° 00' 00"  
 R = 2,864.70'  
 T = 348.99'  
 L = 694.56'  
 E = 21.18'  
 e = -----  
 T.R. = -----  
 S.E. RUN = -----  
 P.C. STA. = 864+85.66  
 P.T. STA. = 871+80.22



FILE NAME =	USER NAME = swartzw	DESIGNED -	REVISED -
c:\pwwork\pwwork\swartzw\d0241030\d77	586-shr-plan.dgn	DRAWN -	REVISED -
	PLOT SCALE = 300.0000'' / IN.	CHECKED -	REVISED -
	PLOT DATE = 12/10/2010	DATE -	REVISED -

**STATE OF ILLINOIS  
 DEPARTMENT OF TRANSPORTATION**

<b>PLAN ALIGNMENT</b>		
SCALE: NA	SHEET NO. 2 OF 6 SHEETS	STA. 782+00.00 TO STA. 882+00.00

F.A.P. RTE.	SECTION	COUNTY	TOTAL SHEETS	SHEET NO.
95	(5,6)RS-2A	JASPER	19	10
ILLINOIS FED. AID PROJECT				
CONTRACT NO. 74506				