

F.A.P. RTE.	SECTION	COUNTY	TOTAL SHEETS	SHEET NO.
95	(5,6)RS-2A	JASPER	19	1
		ILLINOIS	CONTRACT NO. 74506	

STATE OF ILLINOIS
DEPARTMENT OF TRANSPORTATION
DIVISION OF HIGHWAYS

**PROPOSED
HIGHWAY PLANS**

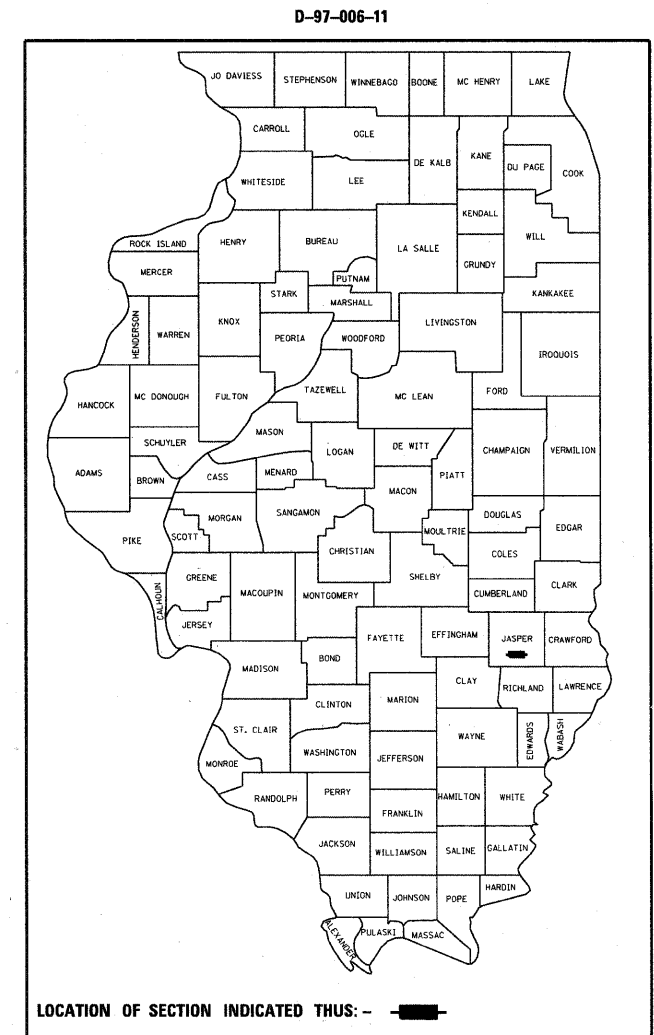
FAP ROUTE 95 (IL. RTE. 33)
SECTION (5,6)RS-2A
PROJECT ACF-0095(055)
RESURFACING (SMART)
JASPER COUNTY

C-97-018-11

FOR INDEX OF SHEETS, SEE SHEET NO. 2

STATION EQUATIONS

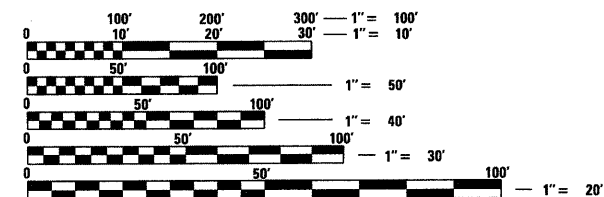
EQUATION: STA. 687+28.06 (BK) = STA. 687+73.01 (AH)
EQUATION: STA. 838+27.25 (BK) = STA. 838+62.16 (AH)
EQUATION: STA. 871+80.22 (BK) = STA. 871+21.76 (AH)
EQUATION: STA. 1207+23.26 (BK) = STA. 1206+92.54 (AH)
EQUATION: STA. 1229+20.94 (BK) = STA. 2229+20.94 (AH)
EQUATION: STA. 2246+85.78 (BK) = STA. 1246+91.91 (AH)



PROJECT BEGINS
STA. 689+81.63

PROJECT ENDS
STA. 1285+59.00

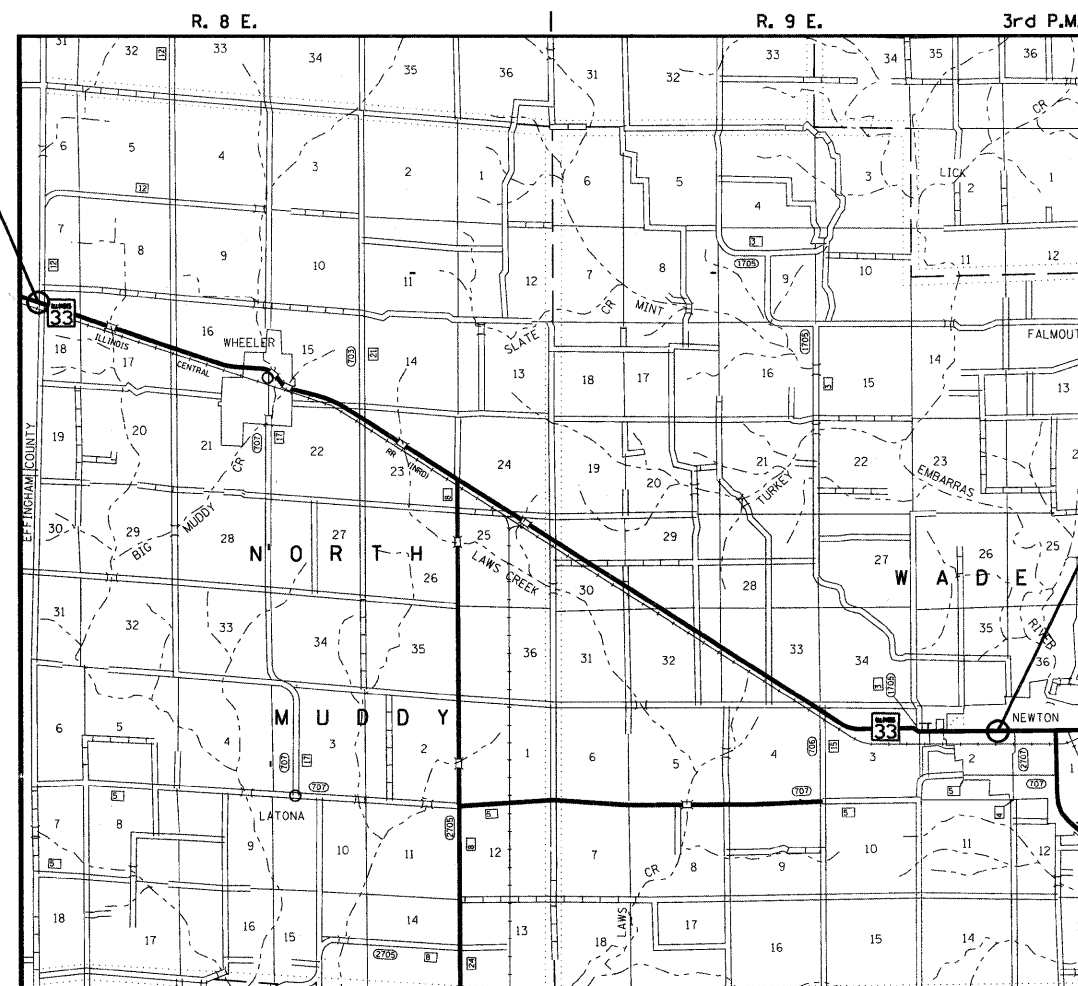
ADT = 5200 (2008)



FULL SIZE PLANS HAVE BEEN PREPARED USING STANDARD ENGINEERING SCALES. REDUCED SIZED PLANS WILL NOT CONFORM TO STANDARD SCALES. IN MAKING MEASUREMENTS ON REDUCED PLANS, THE ABOVE SCALES MAY BE USED.

J.U.L.I.E.
JOINT UTILITY LOCATION INFORMATION FOR EXCAVATION
1-800-892-0123
OR 811

TOWNSHIP: NORTH MUDDY & WADE
PROJECT ENGINEER: TOM RONAN
PROJECT MANAGER: JEFF DAVISON (217-342-8314)
CONTRACT NO. 74506



GROSS LENGTH = 59,625.51 FT. = 11.293 MILES
NET LENGTH = 59,625.51 FT. = 11.293 MILES

STATE OF ILLINOIS
DEPARTMENT OF TRANSPORTATION
DIVISION OF HIGHWAYS

SUBMITTED Dec. 13 2010
Roger J. Dushell/brw
DEPUTY DIRECTOR OF HIGHWAYS, REGION ENGINEER

February 4 2011
Scott E. Stitt, P.E. /a
acting ENGINEER OF DESIGN AND ENVIRONMENT

February 4 2011
Christine M. Reed /a
DIRECTOR OF HIGHWAYS, CHIEF ENGINEER

**PRINTED BY THE AUTHORITY
OF THE STATE OF ILLINOIS**

INDEX OF SHEETS

1	COVER SHEET
2	INDEX, LIST OF STANDARDS, GENERAL NOTES
3	SUMMARY OF QUANTITIES
4	TYPICAL CROSS SECTIONS
5	SCHEDULES
6-8	ALIGNMENT AND TIES
9-14	PLAN SHEETS
15-19	DISTRICT DETAILS

STANDARDS IN THE PLANS

000001-06	STANDARD SYMBOLS, ABBREVIATIONS AND PATTERNS
001006	DECIMAL OF AN INCH AND OF A FOOT
442201-03	CLASS C AND D PATCHES
701011-02	OFF-ROAD MOVING OPERATIONS, 2L, 2W, DAY ONLY
701001-02	OFF-ROAD OPERATIONS, 2L, 2W, MORE THAN 15' (4.5m) AWAY
701006-03	OFF-ROAD OPERATIONS, 2L, 2W, 15' (4.5m) TO 24' (600mm) FROM PAVEMENT EDGE
701201-04	LANE CLOSURE, 2L, 2W, DAY ONLY, FOR SPEEDS > 45 MPH
701301-04	LANE CLOSURE, 2L, 2W, SHORT TIME OPERATIONS
701306-03	LANE CLOSURE, 2L, 2W, SLOW MOVING OPERATIONS, DAY ONLY, FOR SPEEDS > 45 MPH
701311-03	LANE CLOSURE, 2L, 2W, MOVING OPERATIONS - DAY ONLY
701336-06	LANE CLOSURE, 2L, 2W, WORK AREAS IN SERIES, FOR SPEEDS > 45 MPH
701501-06	URBAN LANE CLOSURE, 2L, 2W, UNDIVIDED
701901-01	TRAFFIC CONTROL DEVICES
780001-02	TYPICAL PAVEMENT MARKINGS

701331-04

GENERAL NOTES

THIS SECTION SHALL BE CONSTRUCTED IN ACCORDANCE WITH THE PLANS; THE "STANDARD SPECIFICATIONS FOR ROAD AND BRIDGE CONSTRUCTION" ADOPTED JANUARY 1, 2007; AND THE SPECIAL PROVISIONS INCLUDED IN THE PROPOSAL.

THIS PROJECT IS LOCATED ON FAP ROUTE 95 (IL 33) IN JASPER COUNTY, FROM THE EFFINGHAM/JASPER COUNTY LINE TO WEST AVENUE IN NEWTON. THE WORK INCLUDED IN SECTION (5,6)RS-2A CONSISTS OF PAVEMENT PATCHING, MILLING, HOT-MIX ASPHALT RESURFACING, PAVEMENT MARKING, AND ANY OTHER WORK NECESSARY TO COMPLETE THE SECTION.

PAVEMENT MARKING SHALL BE APPLIED IN ACCORDANCE WITH SECTION 780 OF THE STANDARD SPECIFICATIONS. SHORT TERM PAVEMENT MARKING SHALL BE APPLIED TO THE MILLED SURFACE, BITUMINOUS MATERIALS (PRIME COAT), AND HOT-MIX ASPHALT SURFACE COURSE AS SPECIFIED IN SECTION 703 OF THE STANDARD SPECIFICATIONS. TEMPORARY TAPE SHALL BE USED ON THE SURFACE COURSE AND PAINT SHALL BE USED ON MILLED SURFACES.

THE EXISTING PAVEMENT SHALL BE PATCHED IN ACCORDANCE WITH SECTION 442 OF THE STANDARD SPECIFICATIONS AND THE SPECIAL PROVISIONS. THE QUANTITY OF PATCHING SHOWN ON THE PLANS IS AN ESTIMATE ONLY AND THE FINAL LOCATIONS AND QUANTITY SHALL BE DETERMINED BY THE ENGINEER IN THE FIELD.

THE PAY ITEM TEMPORARY RAMP HAS BEEN INCLUDED FOR THE CONSTRUCTION OF TEMPORARY RAMPS IN ACCORDANCE WITH ARTICLE 406.08 OF THE STANDARD SPECIFICATIONS. THE COST SHALL INCLUDE BOTH THE INSTALLATION AND THE REMOVAL OF THE TEMPORARY RAMPS.

TEMPORARY TAPERS WILL BE REQUIRED AFTER THE HMA SURFACE REMOVAL, 1 1/2" OPERATION HAS BEEN PERFORMED AND ANY SUBSEQUENT RESURFACING OPERATION NEEDING TEMPORARY TAPERS. THE CONTRACTOR SHALL CONSTRUCT TEMPORARY TAPERS (MAX. 2 FEET IN LENGTH) AT ENTRANCES IN AREAS THAT HAVE BEEN MILLED 1 1/2". THIS WORK SHALL BE INCLUDED IN THE COST OF HMA SURFACE REMOVAL.

THE RESIDENT ENGINEER SHALL BE THE SOLE JUDGE CONCERNING THE CURING TIME FOR THE VARIOUS PAY ITEMS INVOLVING HOT-MIX ASPHALT.

THE CONTRACTOR SHALL PROVIDE INTERNET ACCESSIBILITY TO THE HOT-MIX ASPHALT PLANT QUALITY CONTROL LAB SO THAT HOT-MIX ASPHALT PLANT REPORTS CAN BE E-MAILED TO THE DISTRICT HEADQUARTERS. THIS WORK SHALL BE INCLUDED IN THE COST OF THE VARIOUS PAY ITEMS INVOLVING HOT-MIX ASPHALT.

THE CONTRACTOR SHALL USE EITHER RC-70, SS1H, OR SS-1HP, APPLIED AT THE RATE DIRECTED BY THE ENGINEER, FOR THE PAY ITEM BITUMINOUS MATERIALS (PRIME COAT).

A UNIFORMLY STRAIGHT SAW CUT SHALL BE MADE AT LOCATIONS WHERE PROPOSED NEW CONSTRUCTION WILL ABUT EXISTING HOT-MIX ASPHALT SURFACES. THE SAW CUT SHALL BE MADE FULL DEPTH THROUGH THE EXISTING SURFACE. THIS WORK WILL BE CONSIDERED INCLUDED IN THE COST OF THE CONTRACT ITEMS INVOLVED AND NO EXTRA COMPENSATION WILL BE ALLOWED.

THE FOLLOWING MIXTURE REQUIREMENTS ARE APPLICABLE FOR THIS PROJECT:

MIXTURE USE:	SURFACE COURSE
PG GRADE:	PG 64-22
DESIGN AIR VOIDS:	4.0% @ NDESIGN = 70
MIXTURE COMPOSITION:	IL-9.5
FRICTION AGGREGATE:	MIXTURE D

MIXTURE USE:	CLASS D PATCHING
PG GRADE:	PG 64-22
DESIGN AIR VOIDS:	4.0% @ NDESIGN = 70
MIXTURE COMPOSITION:	IL-19.0
FRICTION AGGREGATE:	N/A

MIXTURE USE:	HOT-MIX ASPHALT FOR PATCHING
PG GRADE:	PG 64-22
DESIGN AIR VOIDS:	4.0% @ NDESIGN = 70
MIXTURE COMPOSITION:	IL-19.0
FRICTION AGGREGATE:	N/A

THE FOLLOWING RATES OF APPLICATION HAVE BEEN USED IN THE CALCULATING PLAN QUANTITIES:

BITUMINOUS MATERIALS (PRIME COAT)	0.10 GAL/SQ YD
AGGREGATE (PRIME COAT)	4 LBS/SQ YD
HOT-MIX ASPHALT	112 LBS/SQ YD/INCH

FILE NAME =	USER NAME = #USER#	DESIGNED -	REVISED -	STATE OF ILLINOIS DEPARTMENT OF TRANSPORTATION	INDEX OF SHEETS AND GENERAL NOTES			F.A.P. RTE.	SECTION	COUNTY	TOTAL SHEETS	SHEET NO.	
#FILE#		DRAWN -	REVISED -		SCALE: NA	SHEET NO. 1 OF 1 SHEETS	STA.	TO STA.	95	(5,6)RS-2A	JASPER	19	2
	PLOT SCALE = #SCALE#	CHECKED -	REVISED -		CONTRACT NO. 74506								
	PLOT DATE = #DATE#	DATE -	REVISED -		ILLINOIS FED. AID PROJECT								

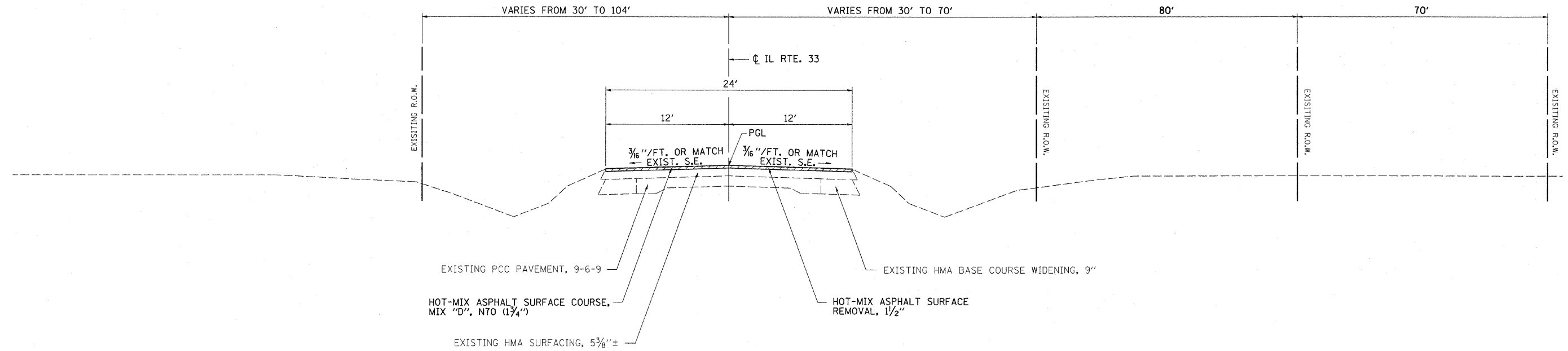
SUMMARY OF QUANTITIES			TOTAL QUANTITIES	CONSTRUCTION TYPE CODE
CODE NO	ITEM	UNIT	80% FED. 20% ST. 0005	
40600100	BITUMINOUS MATERIALS (PRIME COAT)	GALLON	15891	15891
40600300	AGGREGATE (PRIME COAT)	TON	318	318
40600895	CONSTRUCTING TEST STRIP	EACH	1	1
40600990	TEMPORARY RAMP	SQ YD	53	53
40603340	HOT-MIX ASPHALT SURFACE COURSE, MIX "D", N70	TON	15573	15573
44000155	HOT-MIX ASPHALT SURFACE REMOVAL. 1 1/2"	SQ YD	158906	158906
44201815	CLASS D PATCHES, TYPE II, 14 INCH	SQ YD	4208	4208
44201819	CLASS D PATCHES, TYPE III, 14 INCH	SQ YD	2666	2666
44201821	CLASS D PATCHES, TYPE IV, 14 INCH	SQ YD	3890	3890
67000500	ENGINEER'S FIELD OFFICE, TYPE B	CAL MO	6	6
67100100	MOBILIZATION	L SUM	1	1
70100450	TRAFFIC CONTROL AND PROTECTION, STANDARD 701201	L SUM	1	1
70100460	TRAFFIC CONTROL AND PROTECTION, STANDARD 701306	L SUM	1	1
70100600	TRAFFIC CONTROL AND PROTECTION, STANDARD 701336	L SUM	1	1
70102620	TRAFFIC CONTROL AND PROTECTION, STANDARD 701501	L SUM	1	1
70300100	SHORT TERM PAVEMENT MARKING	FOOT	17877	17877
70300220	TEMPORARY PAVEMENT MARKING - LINE 4"	FOOT	135537	135537
70301000	WORK ZONE PAVEMENT MARKING REMOVAL	SQ FT	1986	1986
* 78001110	PAINT PAVEMENT MARKING - LINE 4"	FOOT	135632	135632
X0556100	PARTIAL DEPTH PATCHING (SPECIAL)	SQ YD	11352	11352
● Z0076600	TRAINEES	HOUR	500	500
Z0004810	HOT-MIX ASPHALT FOR PATCHING	TON	3814	3814

*SPECIALTY ITEM
● 8842

FILE NAME *	USER NAME = #USER*	DESIGNED -	REVISED -	STATE OF ILLINOIS DEPARTMENT OF TRANSPORTATION	SUMMARY OF QUANTITIES			F.A.P. RTE.	SECTION	COUNTY	TOTAL SHEETS	SHEET NO.	
#FILEL*		DRAWN -	REVISED -		SCALE: NA	SHEET NO. 1 OF 1 SHEETS	STA.	TO STA.	95	(5,6)RS-2A	JASPER	19	3
		CHECKED -	REVISED -					CONTRACT NO. 74506					
		DATE -	REVISED -					ILLINOIS FED. AID PROJECT					

TYPICAL CROSS SECTION

689+81.63 TO 816+00.00
830+59.57 TO 1285+59.00



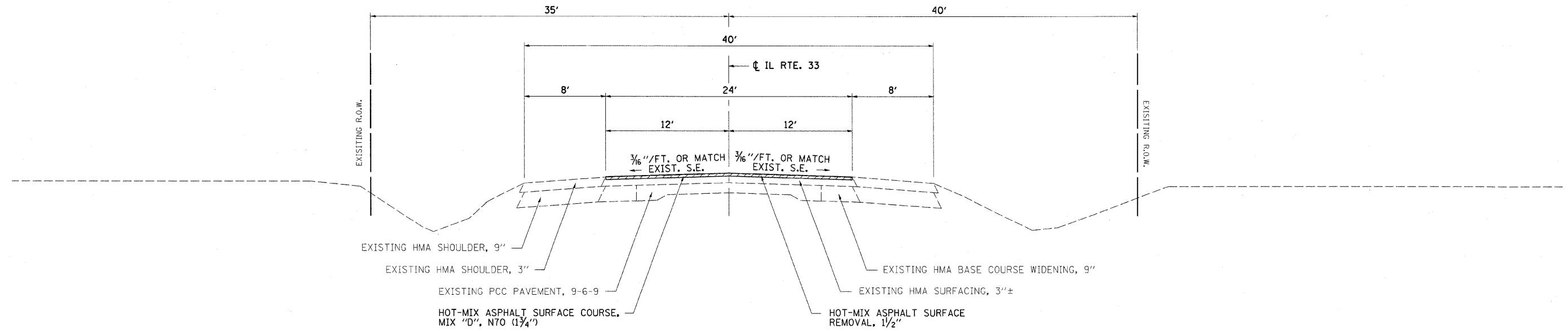
NOTE: TYPICAL NOT DRAWN TO SPECIFIC SCALE



HOT-MIX ASPHALT SURFACE REMOVAL, 1/2"

TYPICAL CROSS SECTION

816+00.00 TO 830+59.57



NOTE: TYPICAL NOT DRAWN TO SPECIFIC SCALE



HOT-MIX ASPHALT SURFACE REMOVAL, 1/2"

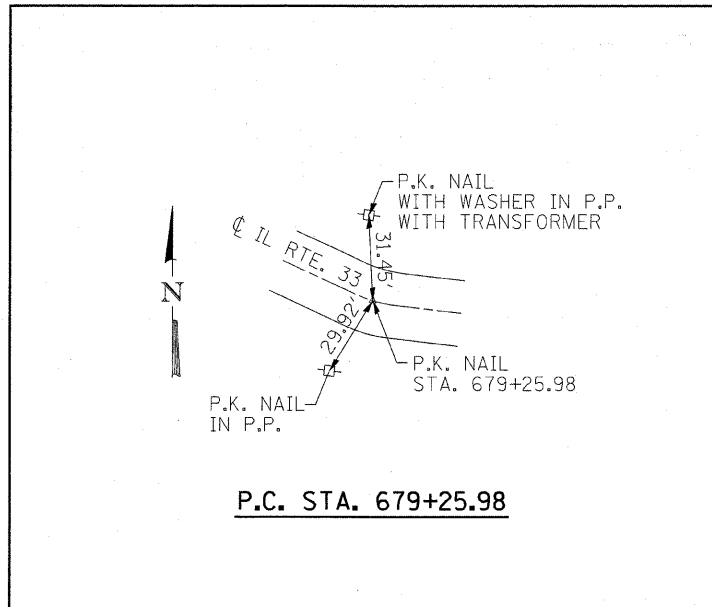
FILE NAME =	USER NAME = swartzw	DESIGNED -	REVISED -	STATE OF ILLINOIS DEPARTMENT OF TRANSPORTATION	TYPICAL CROSS SECTIONS			F.A.P. RTE.	SECTION	COUNTY	TOTAL SHEETS	SHEET NO.	
ca:\pw_work\p\dot\swartzw\10241030\1077	206-shr-typical.dgn	DRAWN -	REVISED -		SCALE: NA	SHEET NO. 1 OF 1 SHEETS	STA.	TO STA.	95	(5,6)RS-2A	JASPER	19	4
	PLOT SCALE = 5.0000 "/ IN.	CHECKED -	REVISED -										
	PLOT DATE = 12/10/2010	DATE -	REVISED -										
ILLINOIS FED. AID PROJECT													

PAVING SCHEDULE			LENGTH	PAVEMENT WIDTH	AREA	BITUMINOUS MATERIALS (PRIME COAT)	AGGREGATE (PRIME COAT)	HOT-MIX ASPHALT SURFACE REMOVAL, 1 1/2"	HOT-MIX ASPHALT SURFACE COURSE, MIX "D", NTO
STATION	TO	STATION	FEET	FEET	SQ YD	GALLON	TON	SQ. YD.	TON
689+81.63	TO	729+51.30	3,969.7	24.0	10,585.8	1,058.6	21.2	10,585.8	1,037.4
729+51.30	TO	729+93.71	42.4	0.0	0.0	0.0	0.0	0.0	0.0
729+93.71	TO	742+61.63	1,267.9	24.0	3,381.1	338.1	6.8	3,381.1	331.3
742+61.63	TO	795+41.63	5,280.0	24.0	14,080.0	1,408.0	28.2	14,080.0	1,379.8
795+41.63	TO	836+07.57	4,065.9	24.0	10,842.5	1,084.3	21.7	10,842.5	1,062.6
836+07.57	TO	836+37.57	30.0	0.0	0.0	0.0	0.0	0.0	0.0
836+37.57	TO	838+27.25	189.7	24.0	505.8	50.6	1.0	505.8	49.6
838+27.25	=	838+62.16	0.0	24.0	0.0	0.0	0.0	0.0	0.0
838+62.16	TO	871+80.22	3,318.1	24.0	8,848.2	884.8	17.7	8,848.2	867.1
871+80.22	=	871+21.26	0.0	24.0	0.0	0.0	0.0	0.0	0.0
871+21.26	TO	924+01.26	5,280.0	24.0	14,080.0	1,408.0	28.2	14,080.0	1,379.8
924+01.26	TO	976+81.26	5,280.0	24.0	14,080.0	1,408.0	28.2	14,080.0	1,379.8
976+81.26	TO	1029+61.26	5,280.0	24.0	14,080.0	1,408.0	28.2	14,080.0	1,379.8
1029+61.26	TO	1082+41.26	5,280.0	24.0	14,080.0	1,408.0	28.2	14,080.0	1,379.8
1082+41.26	TO	1135+21.26	5,280.0	24.0	14,080.0	1,408.0	28.2	14,080.0	1,379.8
1135+21.26	TO	1188+01.26	5,280.0	24.0	14,080.0	1,408.0	28.2	14,080.0	1,379.8
1188+01.26	TO	1207+23.26	1,922.0	24.0	5,125.3	512.5	10.3	5,125.3	502.3
1207+23.26	=	1206+92.54	0.0	24.0	0.0	0.0	0.0	0.0	0.0
1206+92.54	TO	1229+20.94	2,228.4	24.0	5,942.4	594.2	11.9	5,942.4	582.4
1229+20.94	TO	1246+91.91	1,771.0	24.0	4,722.6	472.3	9.4	4,722.6	462.8
1246+91.91	TO	1285+59.00	3,867.1	24.0	10,312.2	1,031.2	20.6	10,312.2	1,010.6
SHEET TOTALS			59,632		158,826	15,883	318	158,826	15,565

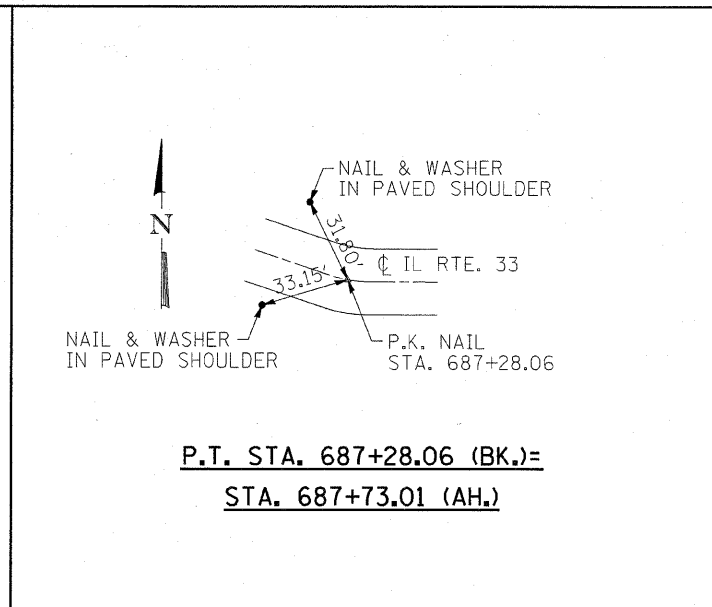
PAVEMENT MARKING SCHEDULE											
STATION	TO	STATION	LENGTH FOOT	SHORT-TERM PAVEMENT MARKING FOOT	TEMPORARY PAVEMENT MARKING-LINE 4" (YELLOW) FOOT	TEMPORARY PAVEMENT MARKING-LINE 4" (YELLOW SKIP-DASH) FOOT	TEMPORARY PAVEMENT MARKING-LINE 4" (WHITE) FOOT	WORK ZONE PAVEMENT MARKING REMOVAL SQ FT	PAINT PAVEMENT MARKING-LINE 4" (YELLOW) FOOT	PAINT PAVEMENT MARKING-LINE 4" (YELLOW SKIP-DASH) FOOT	PAINT PAVEMENT MARKING-LINE 4" (WHITE) FOOT
689+81.63	TO	729+51.30	3,969.7	1,190.9	0.0	992.4	7,939.3	3,109.3	0.0	992.4	7,939.3
729+51.30	TO	729+93.71	42.4	0.0	0.0	0.0	0.0	0.0	0.0	10.6	84.8
729+93.71	TO	742+61.63	1,267.9	380.4	0.0	317.0	2,535.8	993.1	0.0	317.0	2,535.8
742+61.63	TO	795+41.63	5,280.0	1,584.0	0.0	1,320.0	10,560.0	4,135.6	0.0	1,320.0	10,560.0
795+41.63	TO	836+07.57	4,065.9	1,219.8	0.0	1,016.5	8,131.9	3,184.7	0.0	1,016.5	8,131.9
836+07.57	TO	836+37.57	30.0	0.0	0.0	0.0	0.0	0.0	0.0	7.5	60.0
836+37.57	TO	838+27.25	189.7	56.9	0.0	47.4	379.4	148.6	0.0	47.4	379.4
838+27.25	=	838+62.16	0.0	0.0	0.0	0.0	0.0	0.0	0.0	0.0	0.0
838+62.16	TO	871+80.22	3,318.1	995.4	0.0	829.5	6,636.1	2,598.9	0.0	829.5	6,636.1
871+80.22	=	871+21.26	0.0	0.0	0.0	0.0	0.0	0.0	0.0	0.0	0.0
871+21.26	TO	924+01.26	5,280.0	1,584.0	0.0	1,320.0	10,560.0	4,135.6	0.0	1,320.0	10,560.0
924+01.26	TO	976+81.26	5,280.0	1,584.0	0.0	1,320.0	10,560.0	4,135.6	0.0	1,320.0	10,560.0
976+81.26	TO	1029+61.26	5,280.0	1,584.0	0.0	1,320.0	10,560.0	4,135.6	0.0	1,320.0	10,560.0
1029+61.26	TO	1082+41.26	5,280.0	1,584.0	0.0	1,320.0	10,560.0	4,135.6	0.0	1,320.0	10,560.0
1082+41.26	TO	1135+21.26	5,280.0	1,584.0	0.0	1,320.0	10,560.0	4,135.6	0.0	1,320.0	10,560.0
1135+21.26	TO	1188+01.26	5,280.0	1,584.0	0.0	1,320.0	10,560.0	4,135.6	0.0	1,320.0	10,560.0
1188+01.26	TO	1207+23.26	1,922.0	576.6	0.0	480.5	3,844.0	1,505.4	0.0	480.5	3,844.0
1207+23.26	=	1206+92.54	0.0	0.0	0.0	0.0	0.0	0.0	0.0	0.0	0.0
1206+92.54	TO	1229+20.94	2,228.4	668.5	0.0	557.1	4,456.8	1,745.4	0.0	557.1	4,456.8
1229+20.94	TO	1246+91.91	1,771.0	531.3	828.0	442.7	3,541.9	1,663.1	828.0	442.7	3,541.9
1246+91.91	TO	1285+59.00	3,867.1	1,160.1	632.0	966.8	7,734.2	3,239.6	632.0	966.8	7,734.2
SHEET TOTALS			59,632	17,868	1,460	14,890	119,119	47,137	1,460	14,908	119,264

PATCHING SCHEDULE					
LOCATION	CLASS D PATCHES, TYPE II, 14"	CLASS D PATCHES, TYPE III, 14"	CLASS D PATCHES, TYPE IV, 14"	PARTIAL DEPTH PATCHING (SPECIAL)	HOT-MIX ASPHALT FOR PATCHING
	SQ YD	SQ YD	SQ YD	SQ YD	TON
FAP 95 (IL 33)	4,208	2,666	3,890	11,352	5,086

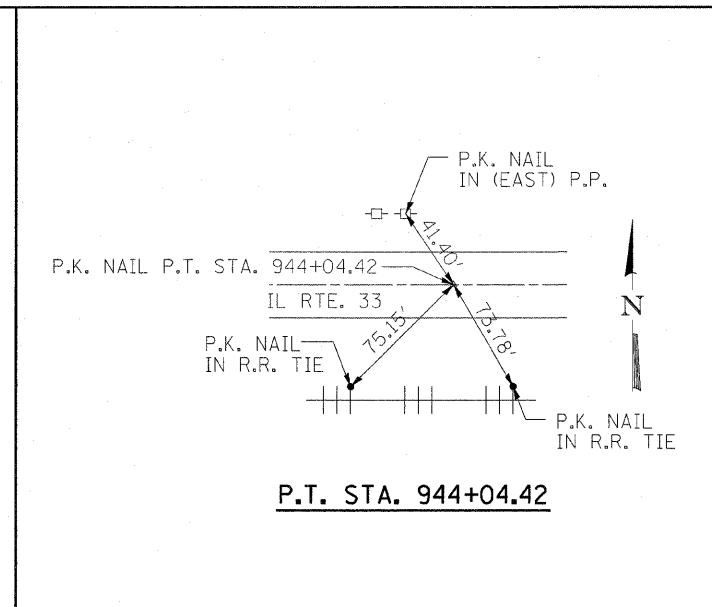
TEMPORARY RAMPS SCHEDULE				LENGTH	WIDTH	AREA
LOCATION				FEET	FEET	SQ YD
689+81.63	TO	689+86.63	BEGINNING OF PROJECT	5.0	24.0	13.3
729+46.30	TO	729+51.30	W. APPROACH SN	5.0	24.0	13.3
729+93.71	TO	729+98.71	E. APPROACH SH	5.0	24.0	13.3
836+02.57	TO	836+07.57	W. APPROACH SN	5.0	24.0	13.3
836+37.57	TO	836+42.57	E. APPROACH SH	5.0	24.0	13.3
1285+53.00	TO	1285+58.00	END OF PROJECT	5.0	24.0	13.3
TOTAL=						80



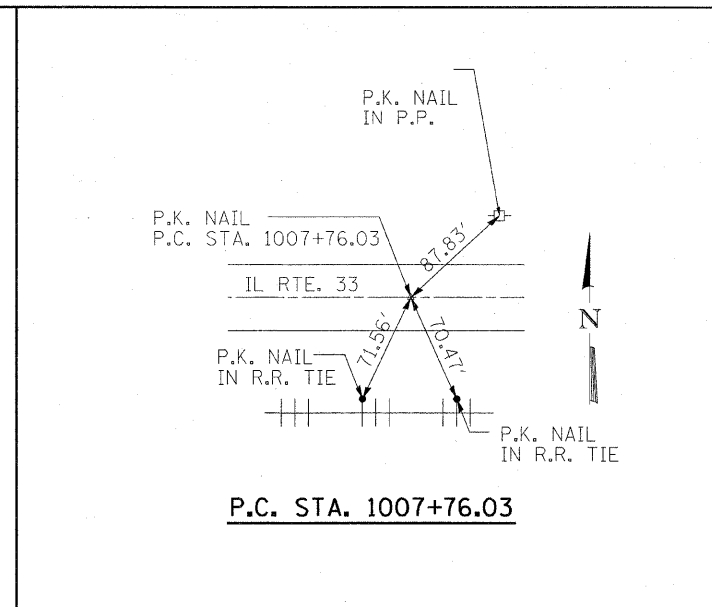
P.C. STA. 679+25.98



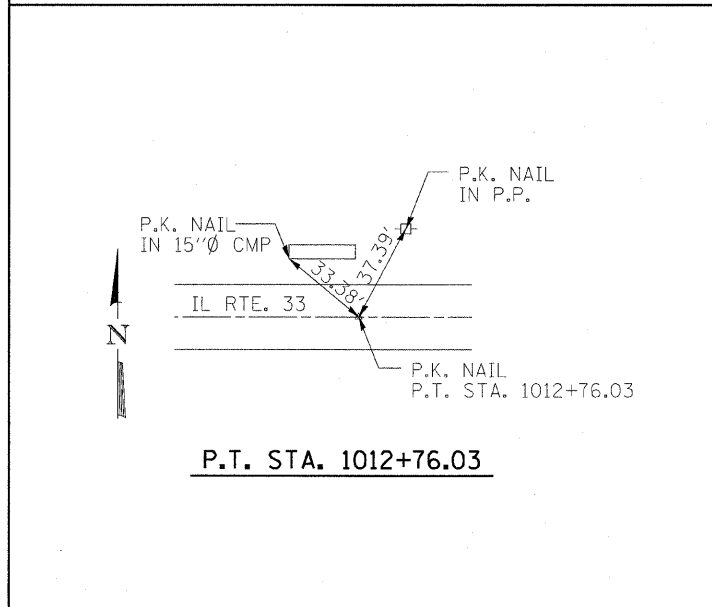
**P.T. STA. 687+28.06 (BK.) =
 STA. 687+73.01 (AH.)**



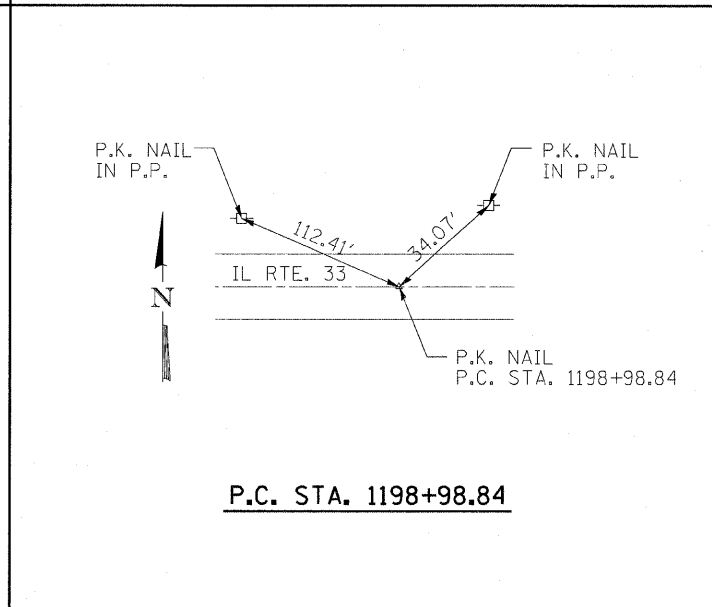
P.T. STA. 944+04.42



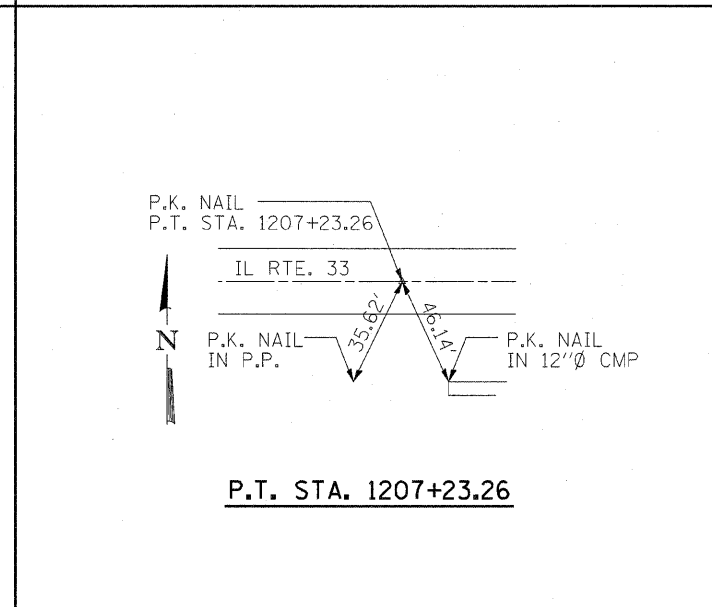
P.C. STA. 1007+76.03



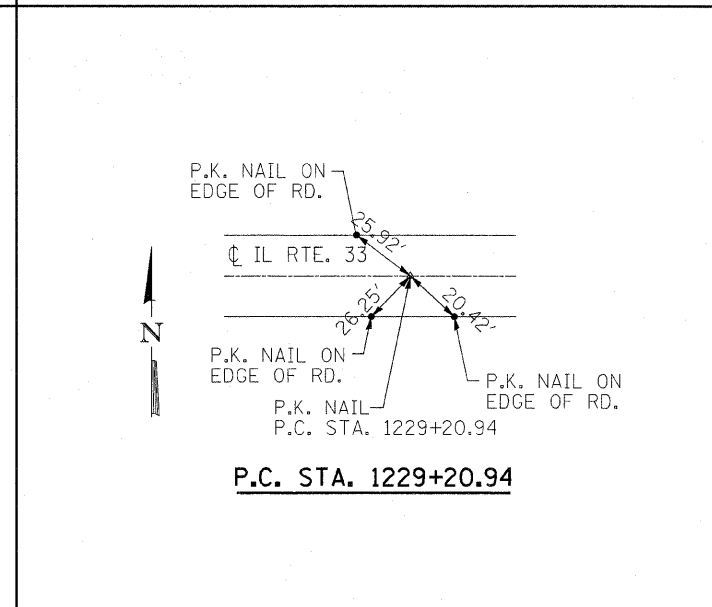
P.T. STA. 1012+76.03



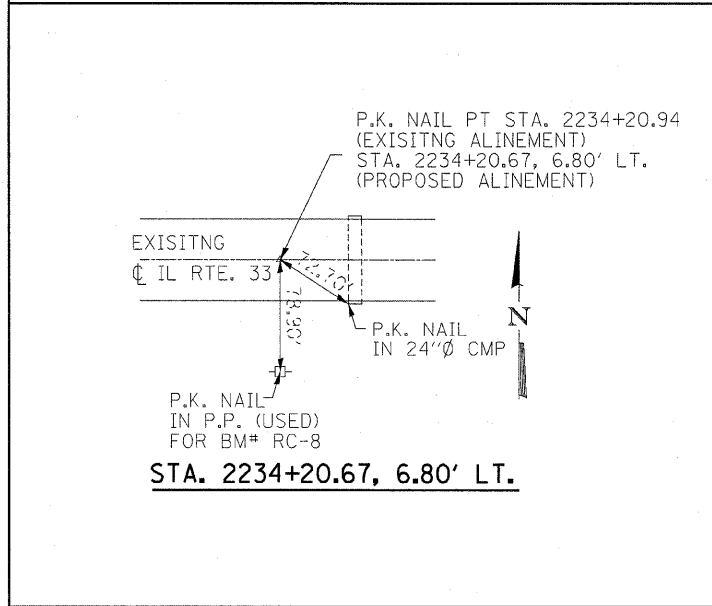
P.C. STA. 1198+98.84



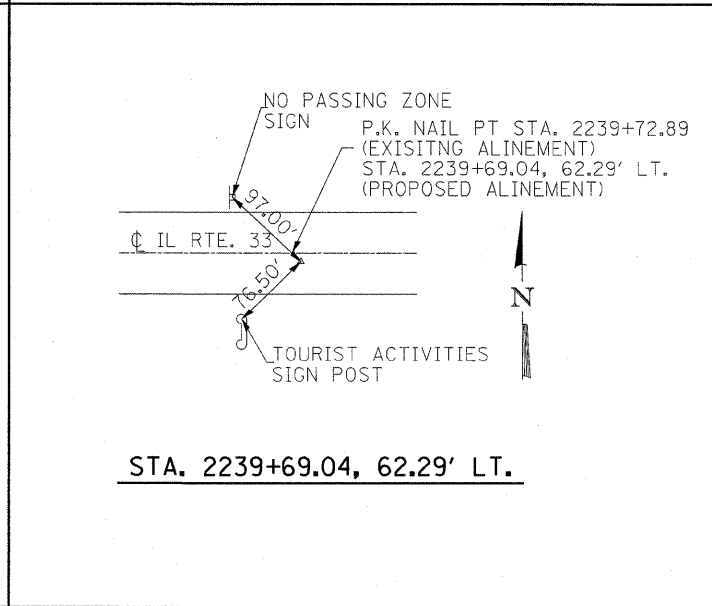
P.T. STA. 1207+23.26



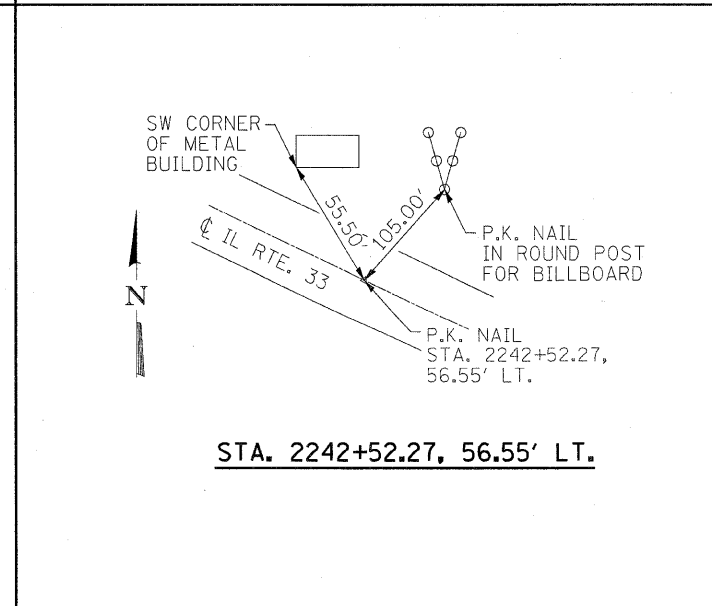
P.C. STA. 1229+20.94



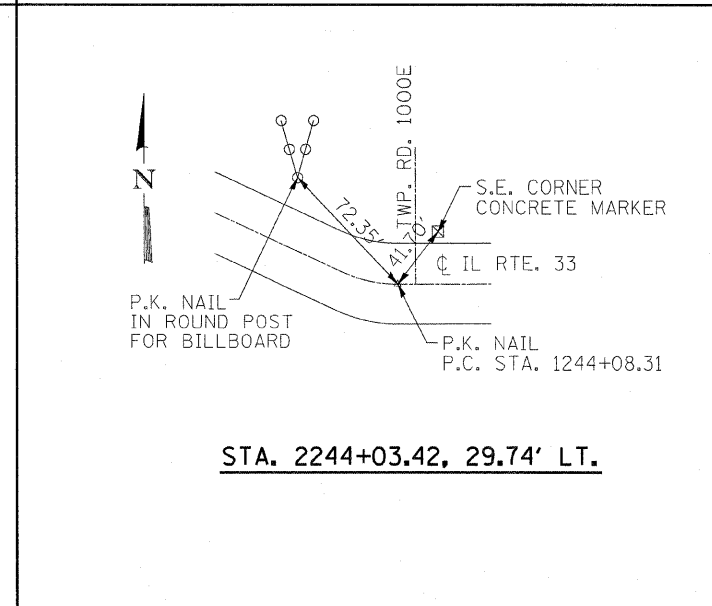
STA. 2234+20.67, 6.80' LT.



STA. 2239+69.04, 62.29' LT.



STA. 2242+52.27, 56.55' LT.



STA. 2244+03.42, 29.74' LT.

FILE NAME =
 c:\pw_work\pwwork\swartzrn\0241030\vd77

USER NAME = swartzrn
 506-shr-ties.dgn
 PLOT SCALE = 50.0000' / IN.
 PLOT DATE = 12/10/2010

DESIGNED -
 DRAWN -
 CHECKED -
 DATE -

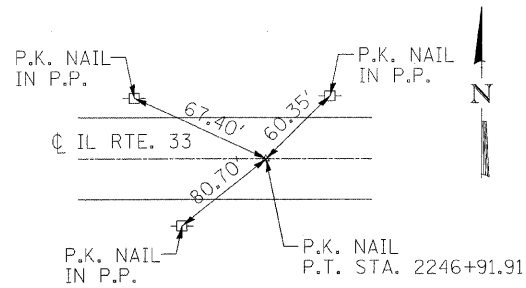
REVISED -
 REVISED -
 REVISED -
 REVISED -

**STATE OF ILLINOIS
 DEPARTMENT OF TRANSPORTATION**

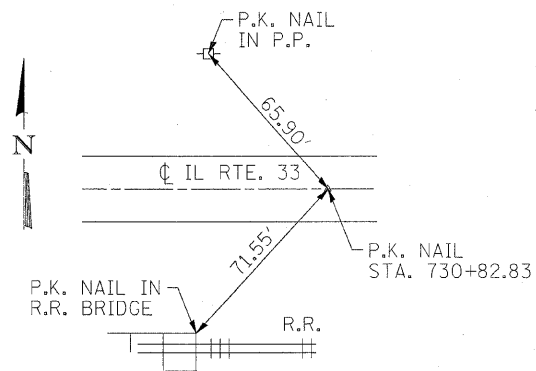
TIE POINTS

SCALE: NA SHEET NO. 1 OF 3 SHEETS STA. TO STA.

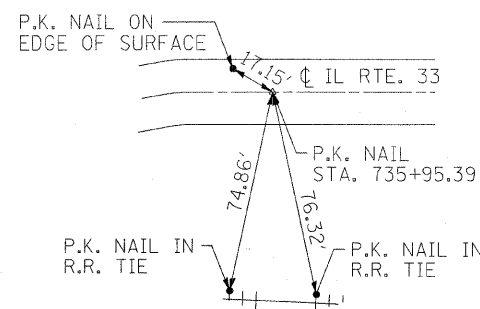
F.A.P. RTE.	SECTION	COUNTY	TOTAL SHEETS	SHEET NO.
95	(5,6)RS-2A	JASPER	19	6
CONTRACT NO. 74506				
ILLINOIS FED. AID PROJECT				



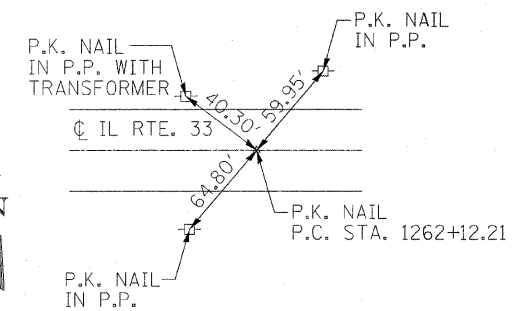
P.T. STA. 2246+91.91



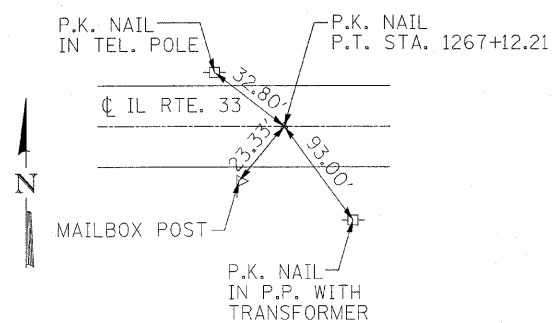
P.C. STA. 730+82.83



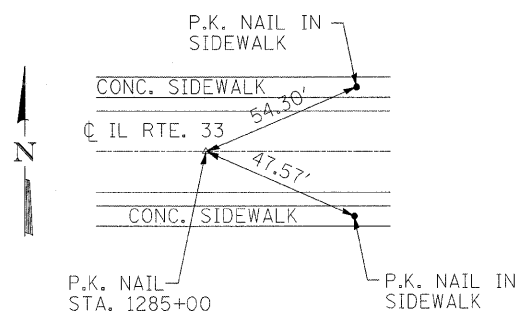
P.T. STA. 735+95.39



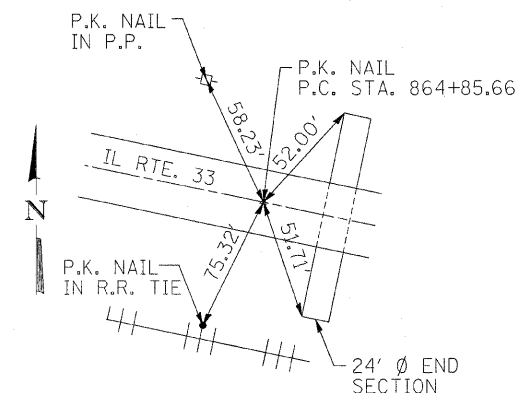
P.C. STA. 1262+12.21



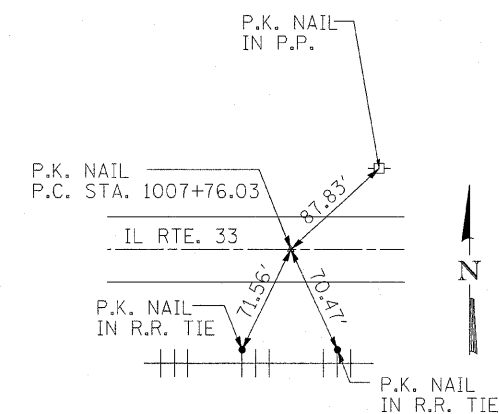
P.T. STA. 1267+12.21



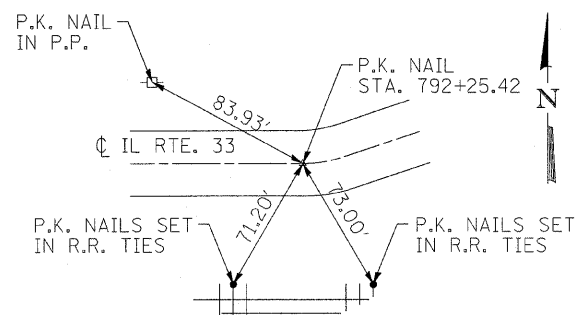
STA. 1285+00



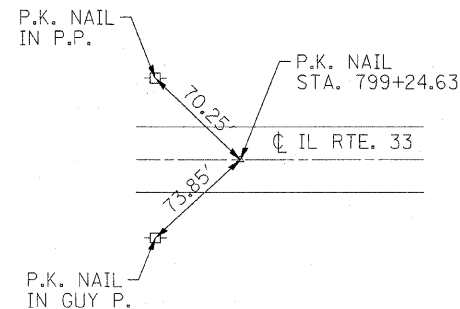
P.C. STA. 864+85.66



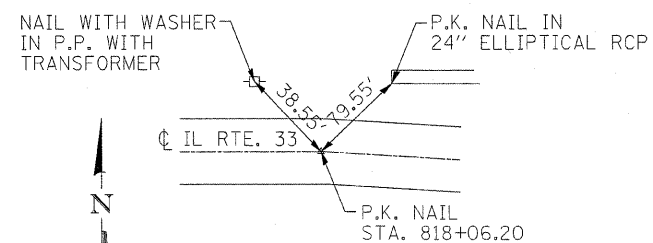
P.C. STA. 1007+76.03



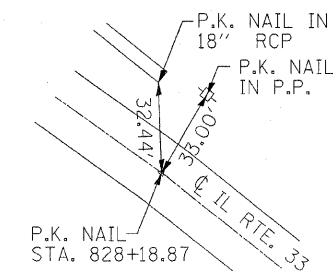
P.C. STA. 792+25.42



P.T. STA. 799+24.63



P.C. STA. 818+06.20



P.T. STA. 828+18.87

FILE NAME = c:\pw_work\p\dot\swartzr\0241830\d77-506-sh1-ties.dgn
 USER NAME = swartzr
 PLOT SCALE = 50.0000' / IN.
 PLOT DATE = 12/10/2010

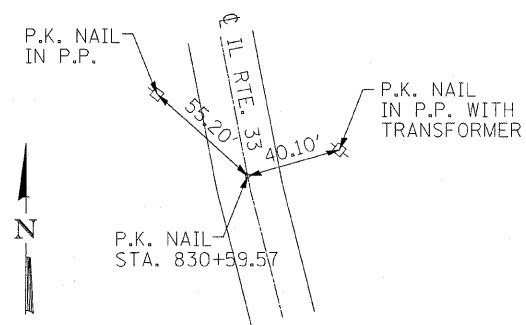
DESIGNED -
 DRAWN -
 CHECKED -
 DATE -
 REVISED -
 REVISED -
 REVISED -
 REVISED -

**STATE OF ILLINOIS
 DEPARTMENT OF TRANSPORTATION**

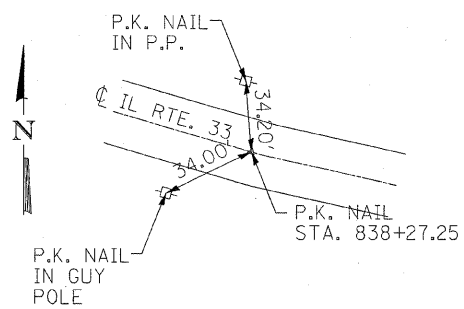
TIE POINTS

SCALE: NA SHEET NO. 2 OF 3 SHEETS STA. TO STA.

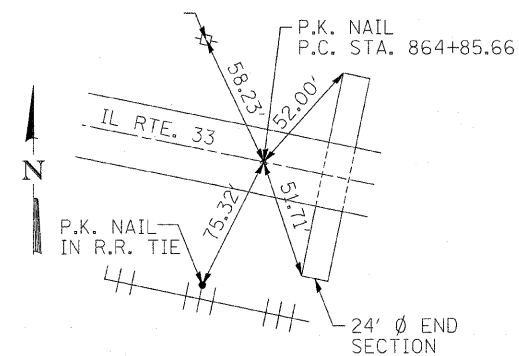
F.A.P. RTE.	SECTION	COUNTY	TOTAL SHEETS	SHEET NO.
95	(5,6)RS-2A	JASPER	19	7
CONTRACT NO. 74506				
ILLINOIS FED. AID PROJECT				



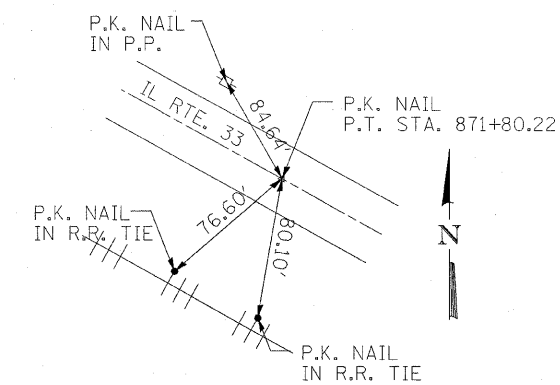
P.C. STA. 830+59.57



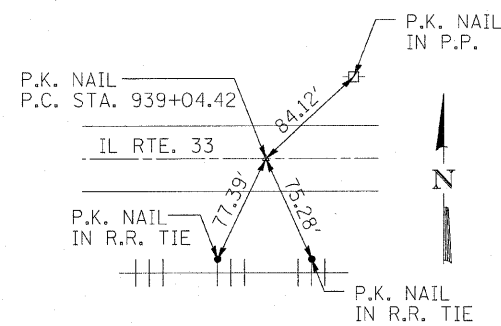
P.T. STA. 838+27.25



P.C. STA. 864+85.66



P.T. STA. 871+80.22



P.C. STA. 939+04.42

FILE NAME =	USER NAME = swartzw	DESIGNED -	REVISED -
c:\pwork\pwork\swartzw\d0241030\d77	505-sht-ties.dgn	DRAWN -	REVISED -
	PLOT SCALE = 50.0000' / IN.	CHECKED -	REVISED -
	PLOT DATE = 12/10/2010	DATE -	REVISED -

**STATE OF ILLINOIS
DEPARTMENT OF TRANSPORTATION**

TIE POINTS

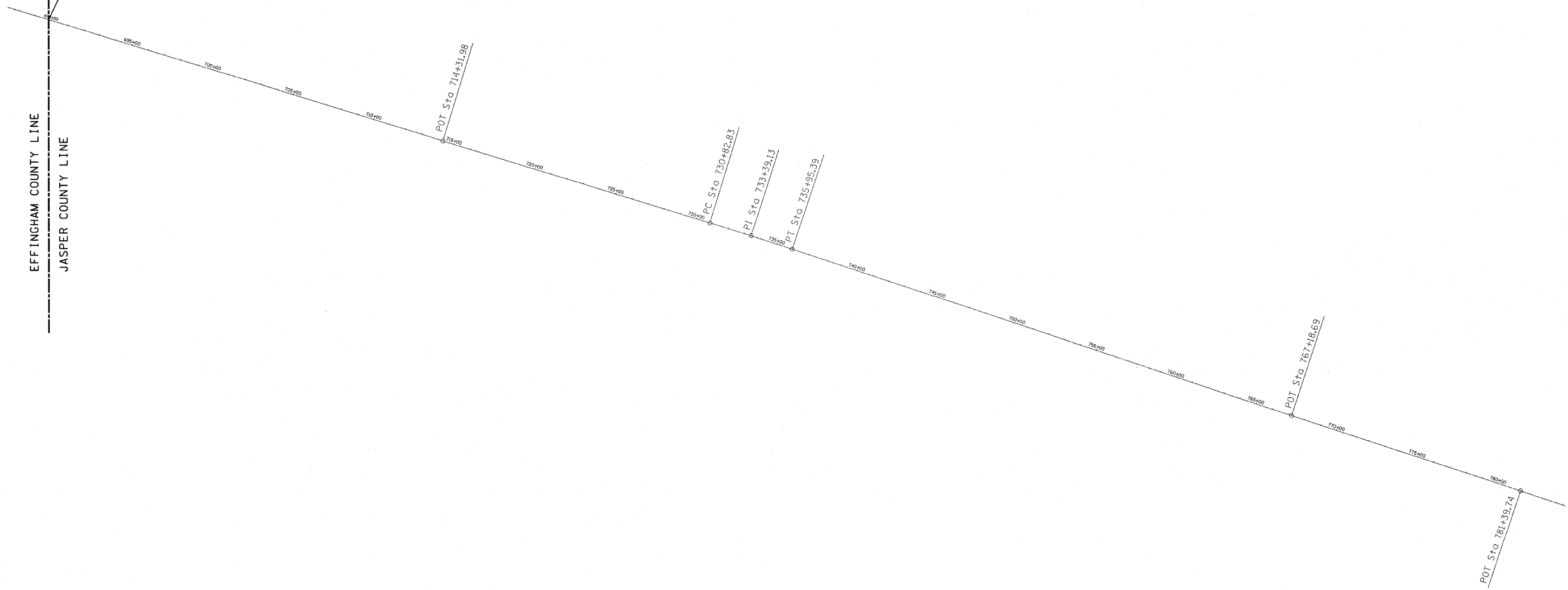
SCALE: NA	SHEET NO. 3 OF 3 SHEETS	STA.	TO STA.	F.A.P. RTE.	SECTION	COUNTY	TOTAL SHEETS	SHEET NO.
				95	(5,6)RS-2A	JASPER	19	8
				CONTRACT NO. 74506				
				ILLINOIS FED. AID PROJECT				



PROJECT BEGINS:
STATION 689+81.63

EXIST. CURVE 33C1A
 PI STA. = 733+39.13
 Δ = 1° 17' 23" (RT)
 D = 0° 15' 06"
 R = 22,768.37'
 T = 256.29'
 L = 512.56'
 E = 1.44'
 e = -----
 T.R. = -----
 S.E. RUN = -----
 P.C. STA. = 730+82.83
 P.T. STA. = 735+95.39

EFFINGHAM COUNTY LINE
 JASPER COUNTY LINE



FILE NAME =	USER NAME = swartzw	DESIGNED -	REVISED -	STATE OF ILLINOIS DEPARTMENT OF TRANSPORTATION	PLAN ALIGNMENT			F.A.P. RTE.	SECTION	COUNTY	TOTAL SHEETS	SHEET NO.
c:\pw_work\pwsdot\swartzw\d0241838\d77	606-shr-plan.dgn	DRAWN -	REVISED -		SCALE: NA	SHEET NO. 1 OF 6 SHEETS	STA. 689+81.63 TO STA. 784+00.00	95	(5,6)RS-2A	JASPER	19	9
	PLOT SCALE = 300.0000' / IN.	CHECKED -	REVISED -		CONTRACT NO. 74506							
	PLOT DATE = 12/18/2010	DATE -	REVISED -		ILLINOIS FED. AID PROJECT							

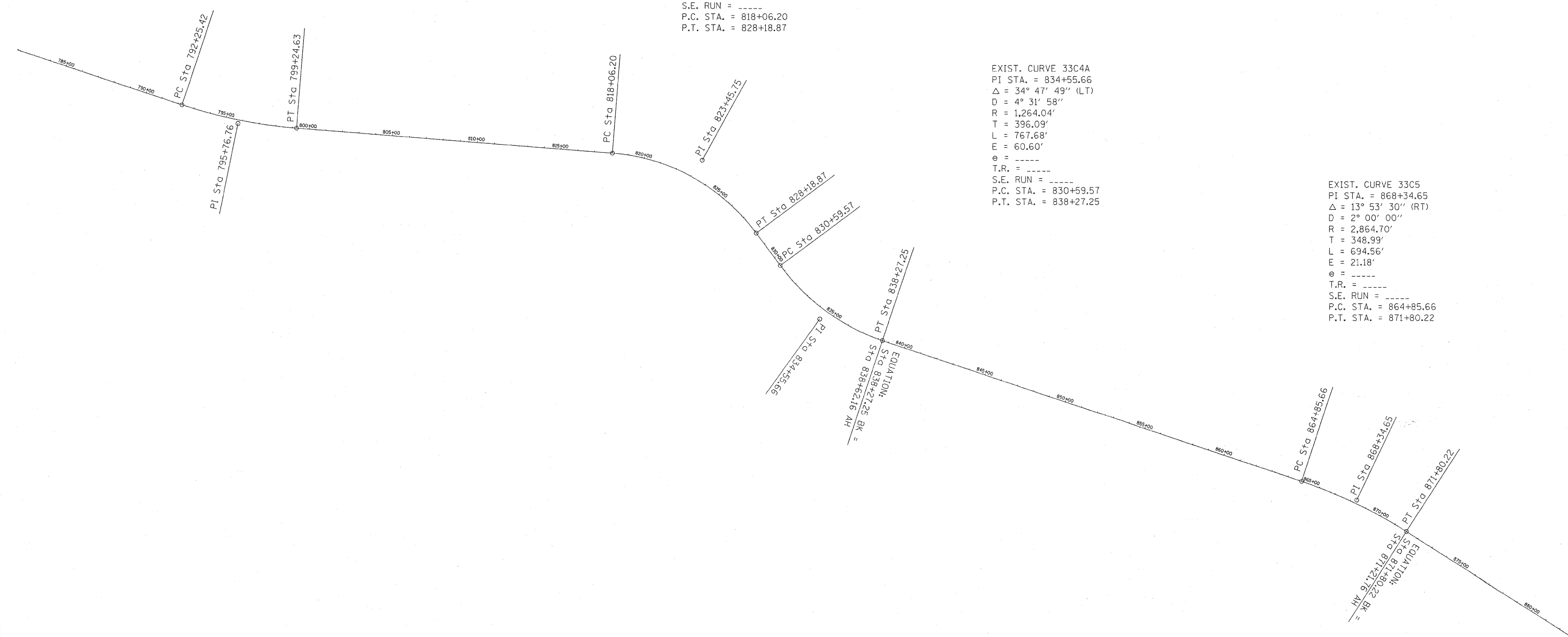


EXIST. CURVE 33C2
 PI STA. = 795+76.76
 $\Delta = 13^\circ 57' 30''$ (LT)
 D = 1° 59' 47"
 R = 2,870.10'
 T = 351.34'
 L = 699.21'
 E = 21.42'
 e = -----
 T.R. = -----
 S.E. RUN = -----
 P.C. STA. = 792+25.42
 P.T. STA. = 799+24.63

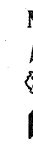
EXIST. CURVE 33C3A
 PI STA. = 823+45.75
 $\Delta = 48^\circ 56' 45''$ (RT)
 D = 4° 50' 00"
 R = 1,185.43'
 T = 539.55'
 L = 1,012.67'
 E = 117.01'
 e = -----
 T.R. = -----
 S.E. RUN = -----
 P.C. STA. = 818+06.20
 P.T. STA. = 828+18.87

EXIST. CURVE 33C4A
 PI STA. = 834+55.66
 $\Delta = 34^\circ 47' 49''$ (LT)
 D = 4° 31' 58"
 R = 1,264.04'
 T = 396.09'
 L = 767.68'
 E = 60.60'
 e = -----
 T.R. = -----
 S.E. RUN = -----
 P.C. STA. = 830+59.57
 P.T. STA. = 838+27.25

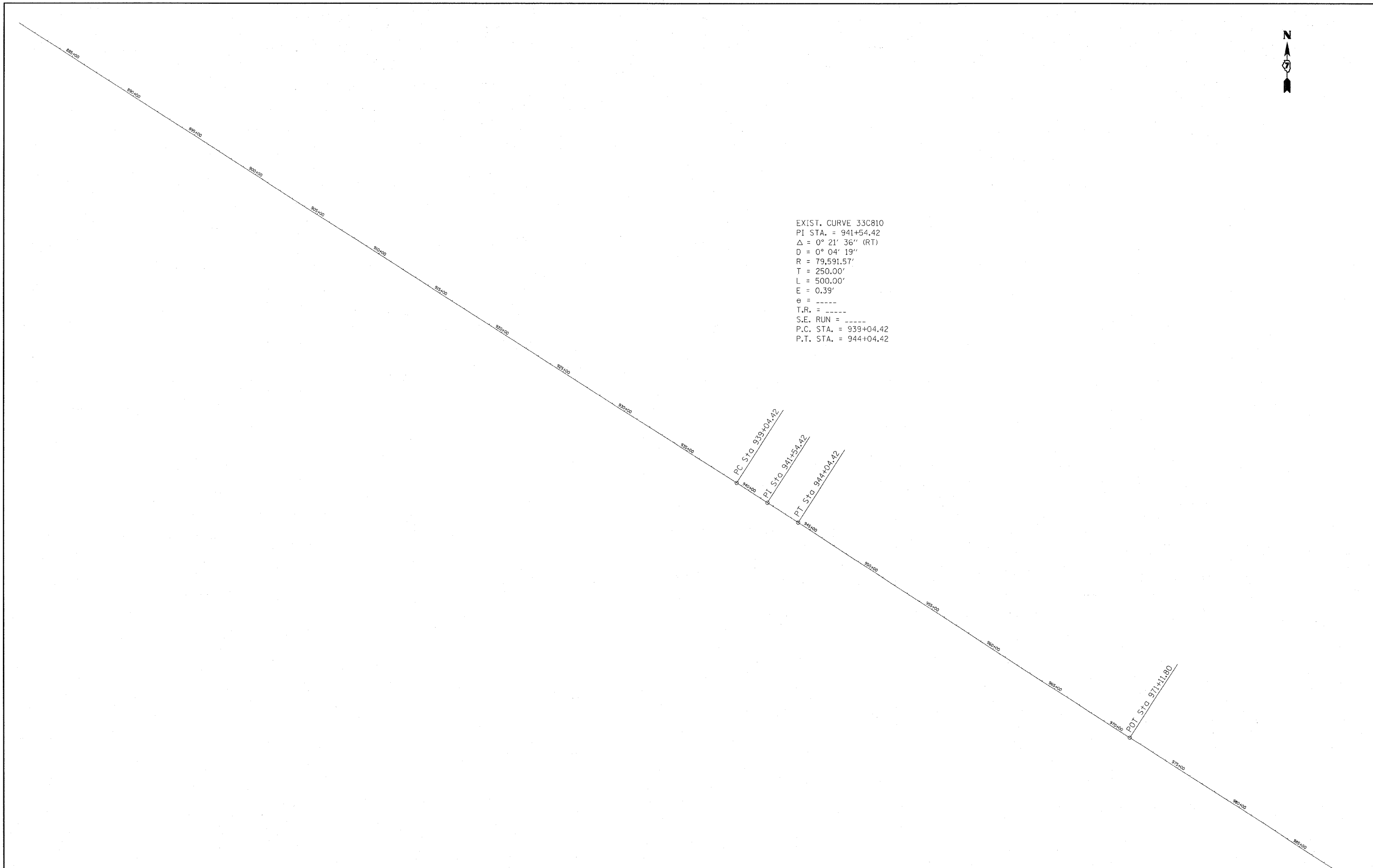
EXIST. CURVE 33C5
 PI STA. = 868+34.65
 $\Delta = 13^\circ 53' 30''$ (RT)
 D = 2° 00' 00"
 R = 2,864.70'
 T = 348.99'
 L = 694.56'
 E = 21.18'
 e = -----
 T.R. = -----
 S.E. RUN = -----
 P.C. STA. = 864+85.66
 P.T. STA. = 871+80.22



FILE NAME =	USER NAME = swartzw	DESIGNED -	REVISED -	STATE OF ILLINOIS DEPARTMENT OF TRANSPORTATION	PLAN ALIGNMENT			F.A.P. RTE.	SECTION	COUNTY	TOTAL SHEETS	SHEET NO.
c:\pwwork\pwwork\swartzw\d0241030\d77	586-sht-plan.dgn	DRAWN -	REVISED -		SCALE: NA	SHEET NO. 2 OF 6 SHEETS	STA. 782+00.00 TO STA. 882+00.00	95	(5,6)RS-2A	JASPER	19	10
	PLOT SCALE = 300.0000 ' / IN.	CHECKED -	REVISED -		CONTRACT NO. 74506							
	PLOT DATE = 12/10/2010	DATE -	REVISED -		ILLINOIS FED. AID PROJECT							



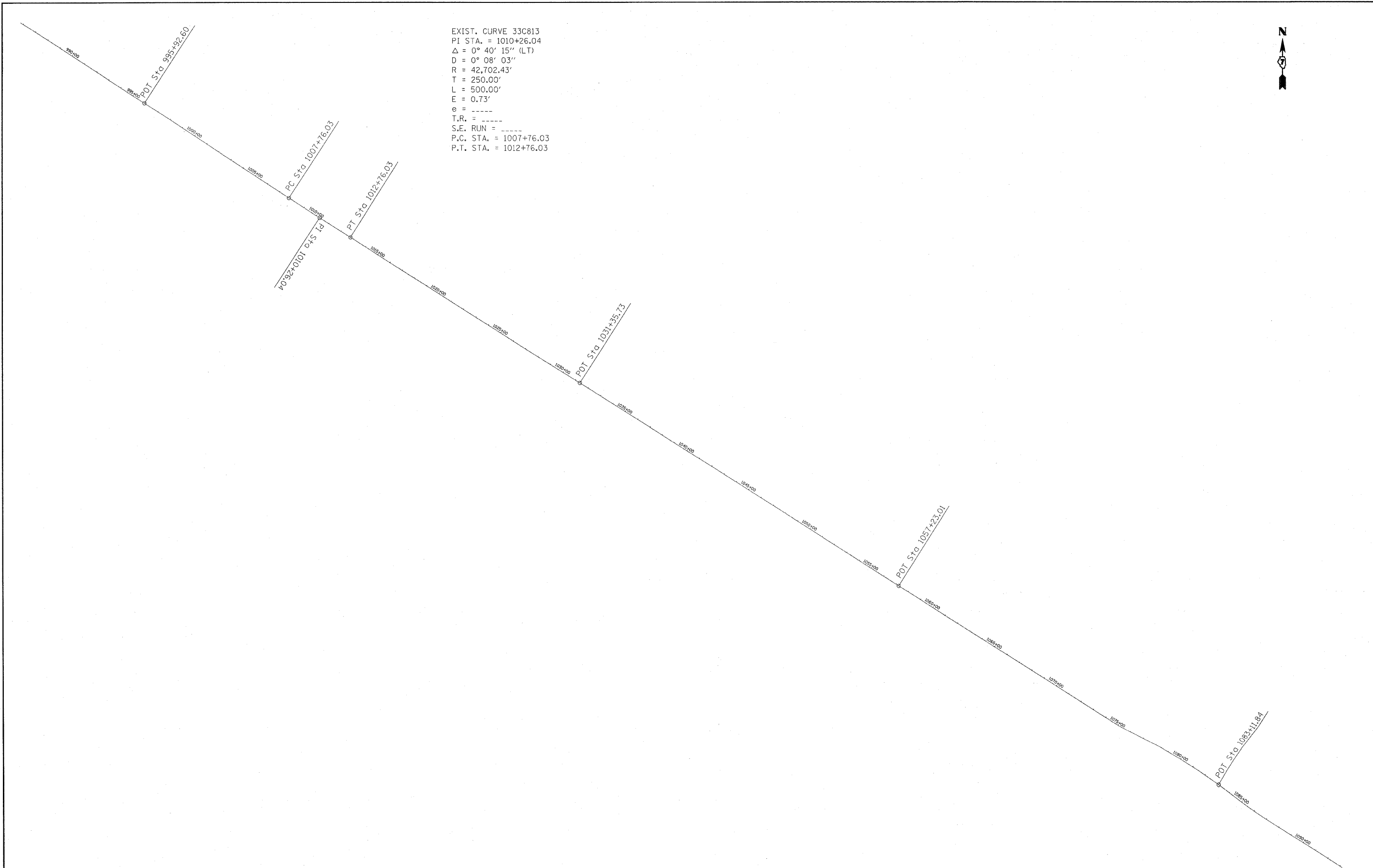
EXIST. CURVE 33C810
 PI STA. = 941+54.42
 $\Delta = 0^\circ 21' 36''$ (RT)
 $D = 0^\circ 04' 19''$
 $R = 79,591.57'$
 $T = 250.00'$
 $L = 500.00'$
 $E = 0.39'$
 $e = \text{-----}$
 $T.R. = \text{-----}$
 $S.E. \text{ RUN} = \text{-----}$
 P.C. STA. = 939+04.42
 P.T. STA. = 944+04.42



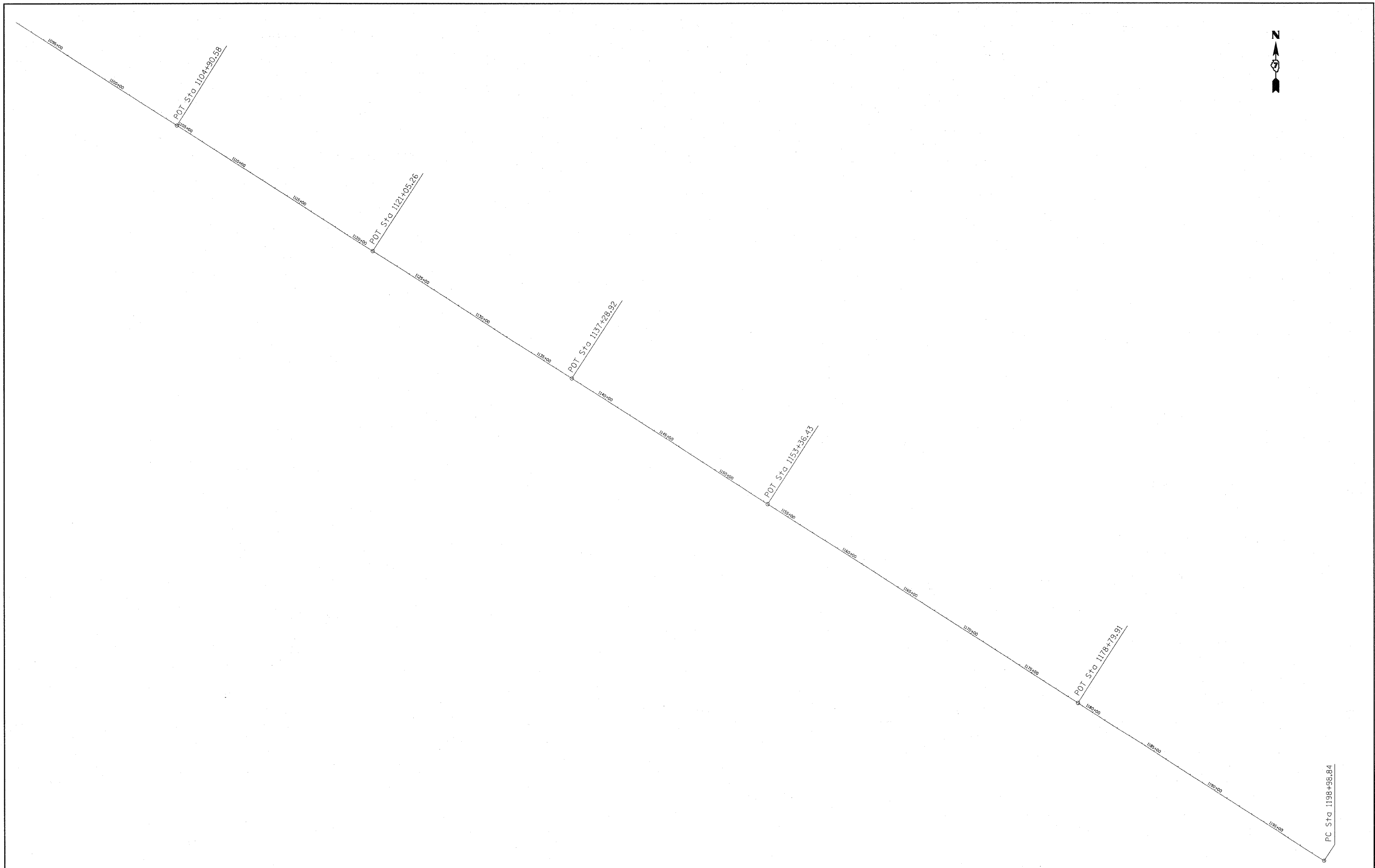
FILE NAME = c:\pw_work\pwidot\swartzr\10241030\1d77	USER NAME = swartzr 606-shr-plan.dgn	DESIGNED -	REVISED -	STATE OF ILLINOIS DEPARTMENT OF TRANSPORTATION	PLAN ALIGNMENT			F.A.P. RTE. 95	SECTION (5,6)RS-2A	COUNTY JASPER	TOTAL SHEETS 19	SHEET NO. 11
	PLOT SCALE = 300.0000 ' / IN.	DRAWN -	REVISED -		SCALE: NA	SHEET NO. 3 OF 6 SHEETS	STA. 881+00.00 TO STA. 987+00.00	CONTRACT NO. 74506				
	PLOT DATE = 12/10/2010	CHECKED -	REVISED -		ILLINOIS FED. AID PROJECT							
		DATE -	REVISED -									



EXIST. CURVE 33C813
 PI STA. = 1010+26.04
 $\Delta = 0^\circ 40' 15''$ (LT)
 $D = 0^\circ 08' 03''$
 $R = 42,702.43'$
 $T = 250.00'$
 $L = 500.00'$
 $E = 0.73'$
 $e =$ -----
 T.R. = -----
 S.E. RUN = -----
 P.C. STA. = 1007+76.03
 P.T. STA. = 1012+76.03



FILE NAME = c:\pw_work\pwsdot\swartzr\ad241838\ad77	USER NAME = swartzr	DESIGNED -	REVISED -	STATE OF ILLINOIS DEPARTMENT OF TRANSPORTATION	PLAN ALIGNMENT		F.A.P. RTE. 95	SECTION (5,6)RS-2A	COUNTY JASPER	TOTAL SHEETS 19	SHEET NO. 12
506-shr-plan.dgn	PLOT SCALE = 300.0000' / IN.	DRAWN -	REVISED -		SCALE: NA	SHEET NO. 4 OF 6 SHEETS	STA. 986+00.00 TO STA. 1093+00.00	CONTRACT NO. 74506		ILLINOIS FED. AID PROJECT	
		CHECKED -	REVISED -								
	PLOT DATE = 12/10/2010	DATE -	REVISED -								



FILE NAME =	USER NAME = swartzw	DESIGNED -	REVISED -	STATE OF ILLINOIS DEPARTMENT OF TRANSPORTATION	PLAN ALIGNMENT			F.A.P. RTE.	SECTION	COUNTY	TOTAL SHEETS	SHEET NO.
c:\pwwork\pwwork\swartzw\cb241838\d774806-sht-plan.dgn	606-sht-plan.dgn	DRAWN -	REVISED -		SCALE: NA	SHEET NO. 5 OF 6 SHEETS	STA. 1092+00.00 TO STA. 1199+00.00	95	(5,6)RS-2A	JASPER	19	13
PLOT SCALE = 300.0000 ' / IN.		CHECKED -	REVISED -					CONTRACT NO. 74506				
PLOT DATE = 12/10/2010		DATE -	REVISED -					ILLINOIS FED. AID PROJECT				

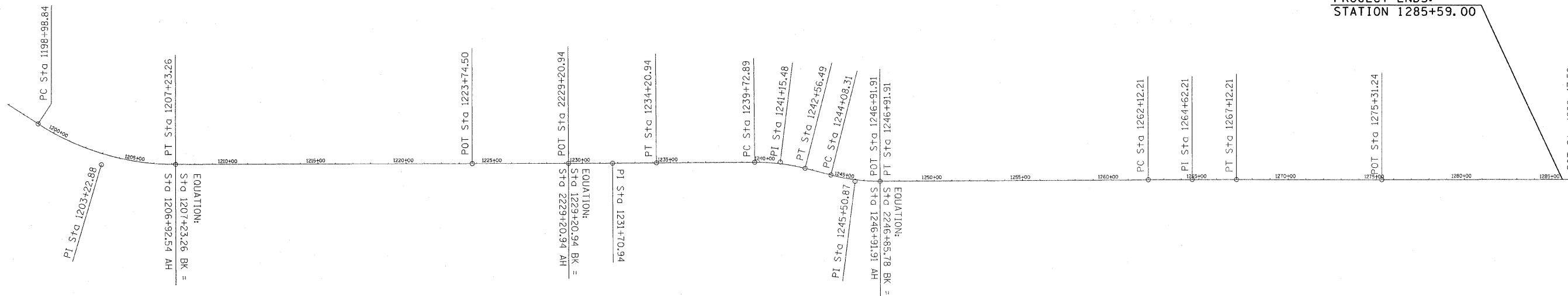


EXIST. CURVE 33C6A
 PI STA. = 1203+22.88
 $\Delta = 33^\circ 03' 23''$ (LT)
 $D = 4^\circ 00' 35''$
 $R = 1,428.95'$
 $T = 424.04'$
 $L = 824.42'$
 $E = 61.59'$
 $e = \text{-----}$
 T.R. = -----
 S.E. RUN = -----
 P.C. STA. = 1198+98.84
 P.T. STA. = 1207+23.26

EXIST. CURVE 33C7A
 PI STA. = 1241+15.48
 $\Delta = 14^\circ 50' 16''$ (RT)
 $D = 5^\circ 13' 55''$
 $R = 1,095.12'$
 $T = 142.60'$
 $L = 283.60'$
 $E = 9.24'$
 $e = \text{-----}$
 T.R. = -----
 S.E. RUN = -----
 P.C. STA. = 1239+72.89
 P.T. STA. = 1242+56.49

EXIST. CURVE 33C8
 PI STA. = 1245+50.87
 $\Delta = 14^\circ 33' 06''$ (LT)
 $D = 5^\circ 07' 52''$
 $R = 1,116.65'$
 $T = 142.57'$
 $L = 283.60'$
 $E = 9.06'$
 $e = \text{-----}$
 T.R. = -----
 S.E. RUN = -----
 P.C. STA. = 1244+08.31
 P.T. STA. = 1246+91.91

PROJECT ENDS:
 STATION 1285+59.00



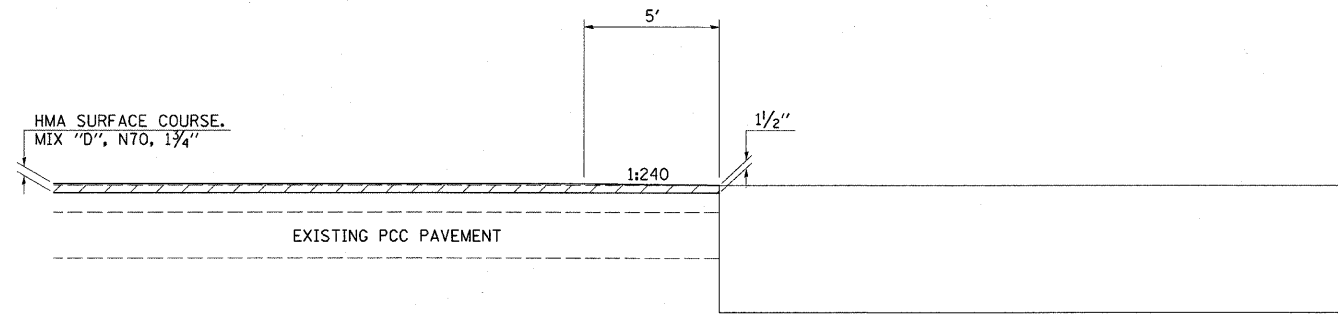
EXIST. CURVE 33C825
 PI STA. = 1231+70.94
 $\Delta = 0^\circ 15' 44''$ (LT)
 $D = 0^\circ 03' 09''$
 $R = 109,218.19'$
 $T = 250.00'$
 $L = 500.00'$
 $E = 0.29'$
 $e = \text{-----}$
 T.R. = -----
 S.E. RUN = -----
 P.C. STA. = 1229+20.94
 P.T. STA. = 1234+20.94

EXIST. CURVE 33C829
 PI STA. = 1264+62.21
 $\Delta = 0^\circ 15' 46''$ (RT)
 $D = 0^\circ 03' 09''$
 $R = 108,968.13'$
 $T = 250.00'$
 $L = 500.00'$
 $E = 0.29'$
 $e = \text{-----}$
 T.R. = -----
 S.E. RUN = -----
 P.C. STA. = 1262+12.21
 P.T. STA. = 1267+12.21

FILE NAME =	USER NAME = swartzw	DESIGNED -	REVISED -	STATE OF ILLINOIS DEPARTMENT OF TRANSPORTATION	PLAN ALIGNMENT			F.A.P. RTE.	SECTION	COUNTY	TOTAL SHEETS	SHEET NO.
ct:\pw_work\pwidot\swartzw\d0241830\d774506-sh1-plan.dgn		DRAWN -	REVISED -		95	(5,6)RS-2A	JASPER	19	14			
PLOT SCALE = 300,0000' / IN.		CHECKED -	REVISED -		CONTRACT NO. 74506							
PLOT DATE = 12/18/2010		DATE -	REVISED -		ILLINOIS FED. AID PROJECT							
				SCALE: NA	SHEET NO. 6 OF 6 SHEETS	STA. 1197+00.00 TO STA. 1285+59.00						

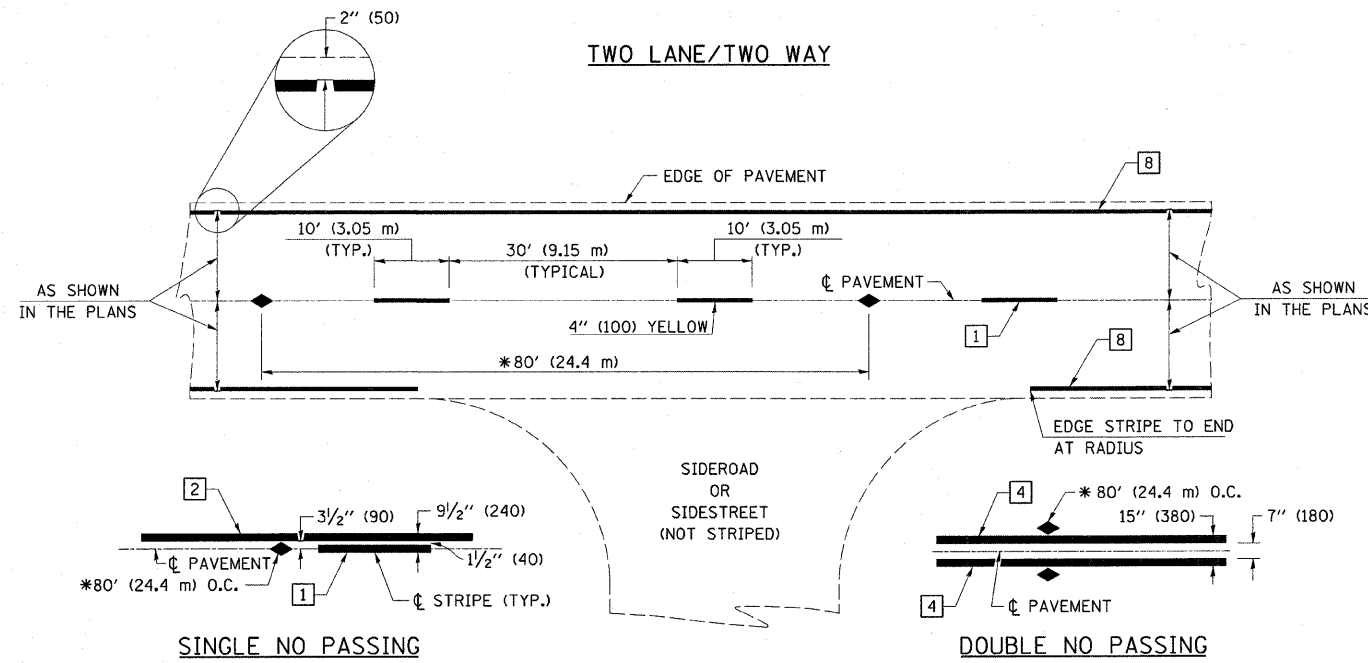
BUTT-JOINT DETAIL

STATION 689+81.63
 STATION 729+51.30
 STATION 729+93.71
 STATION 1285+59.00



 HMA SURFACE REMOVAL, 1/2"

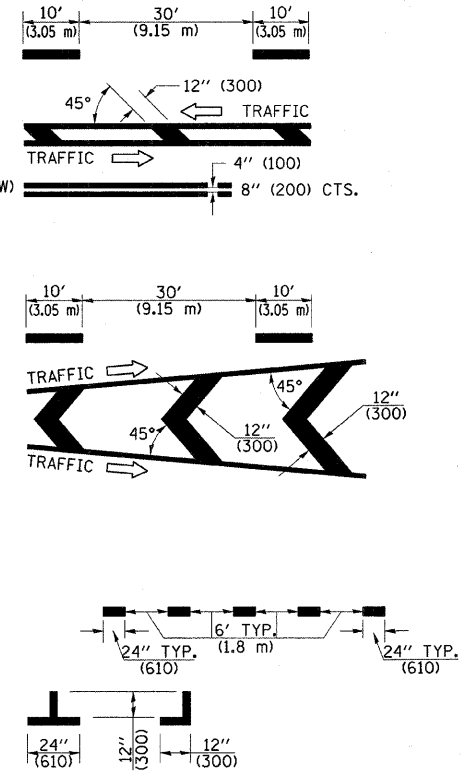
FILE NAME =	USER NAME = swartzw	DESIGNED -	REVISED -	STATE OF ILLINOIS DEPARTMENT OF TRANSPORTATION	JOB DETAILS				F.A.P. RTE.	SECTION	COUNTY	TOTAL SHEETS	SHEET NO.
cr:\pw_work\p\dot\swartzw\d0241830\d774506-sht-detail1.dgn		DRAWN -	REVISED -		95	(5,6)RS-2A	JASPER	19	15				
PLOT SCALE = 50.0000' / IN.		CHECKED -	REVISED -		CONTRACT NO. 74506								
PLOT DATE = 12/10/2010		DATE -	REVISED -		SCALE: NA	SHEET NO. 1 OF 1 SHEETS	STA.	TO STA.	ILLINOIS FED. AID PROJECT				



* REDUCE TO 40' (12.2 m) O.C. ON CURVES WITH POSTED OR ADVISORY SPEEDS OF 45 mph (70 km/h) OR LESS.

PAVEMENT MARKING LEGEND

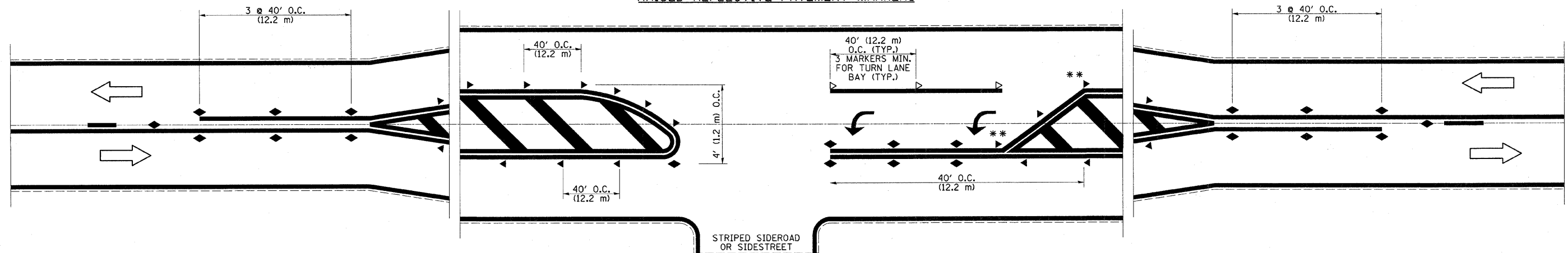
- 1 4" (100) SKIP-DASH (YELLOW)
- 2 4" (100) SOLID (YELLOW)
- 3 12" (300) DIAGONAL (YELLOW)
- 4 4" (100) DOUBLE YELLOW (NARROW)
- 5 RESERVED
- 6 RESERVED
- 7 6" (150) SKIP-DASH (WHITE)
- 8 4" (100) SOLID (WHITE)
- 9 12" (300) DIAGONAL (WHITE)
- 10 6" (150) SOLID (WHITE)
- 11 24" (600) STOP BAR (WHITE)
- 12 8" (200) SOLID (WHITE)
- 13 6" (100) LANE LINE EXTENSIONS
- 14 4" (100) PARKING WHITE



TYPICAL PAVEMENT MARKERS LEGEND

- ◆ TWO-WAY AMBER MARKER
- ▶ ONE-WAY AMBER MARKER
- ▷ ONE-WAY CRYSTAL MARKER

RAISED REFLECTIVE PAVEMENT MARKERS



** REDUCE SPACING IF NECESSARY TO ASSURE MARKERS AT CORNER POINTS.

NOT TO SCALE
Note: All dimensions are in INCHES (millimeters) unless otherwise shown.

DISTRICT 7 DETAIL NO. 7800001

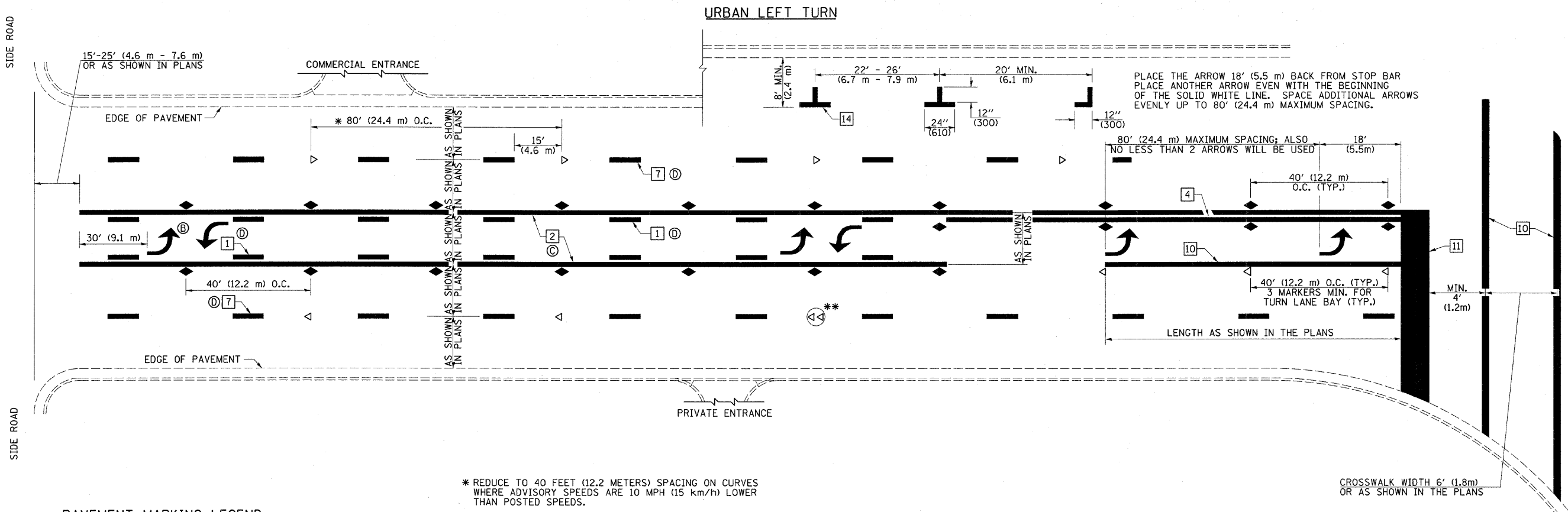
FILE NAME =	USER NAME = swartzw	DESIGNED -	REVISED -
c:\pwwork\pwwidot\swartzw\d0241030\d77	606-shd-details.dgn	DRAWN -	REVISED -
	PLOT SCALE = 50.0000' / IN.	CHECKED -	REVISED -
	PLOT DATE = 12/10/2010	DATE -	REVISED -

STATE OF ILLINOIS
DEPARTMENT OF TRANSPORTATION

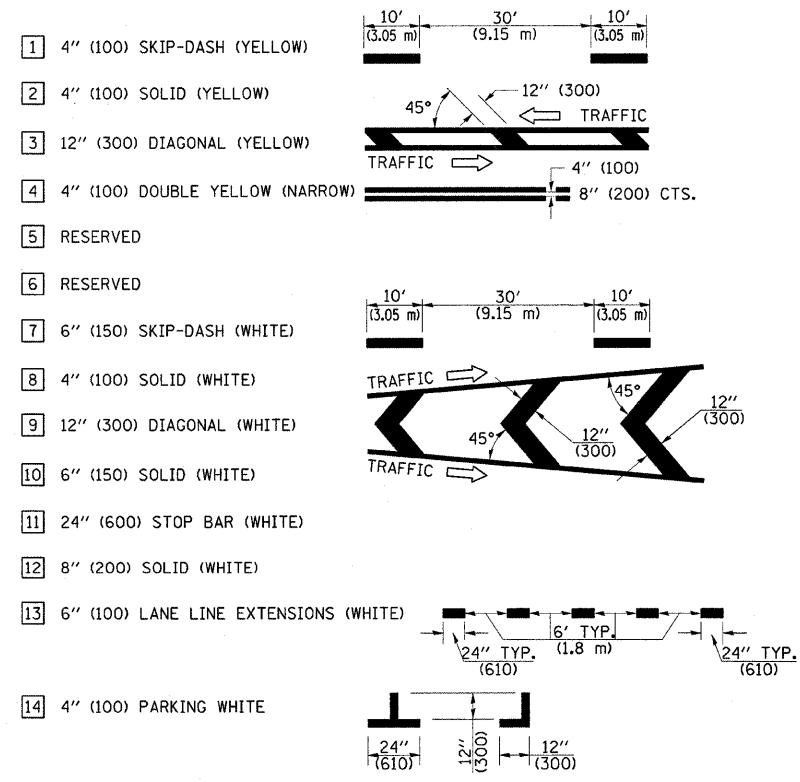
PAVEMENT MARKING AND RAISED REFLECTIVE PAVEMENT MARKERS
(RURAL & URBAN APPLICATIONS)

SCALE: NA SHEET NO. 1 OF 4 SHEETS STA. TO STA.

F.A.P. RTE.	SECTION	COUNTY	TOTAL SHEETS	SHEET NO.
95	(5,6)RS-2A	JASPER	19	16
CONTRACT NO. 74506			ILLINOIS FED. AID PROJECT	



PAVEMENT MARKING LEGEND

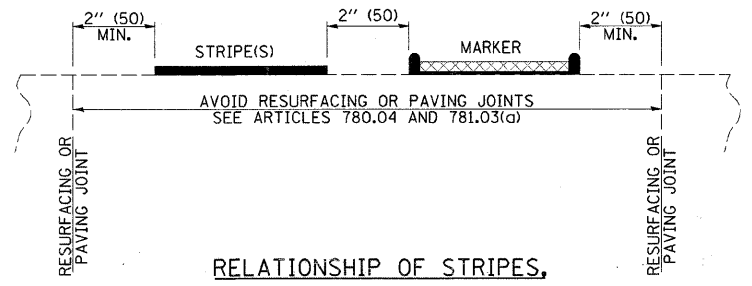


* REDUCE TO 40 FEET (12.2 METERS) SPACING ON CURVES WHERE ADVISORY SPEEDS ARE 10 MPH (15 km/h) LOWER THAN POSTED SPEEDS.

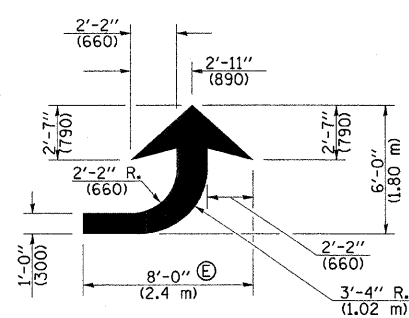
** DOUBLE LANE LINE MARKERS SHALL BE SPECIFIED AND SPACED AS SHOWN IN HIGHWAY STANDARD 781001 FOR MULTI-LANE DIVIDED AND UNDIVIDED HIGHWAYS.

GENERAL NOTES

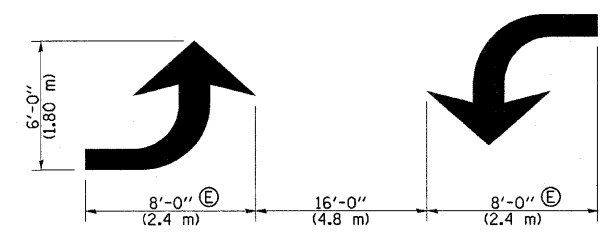
- (B) TURN ARROW PAIRS SHALL BE PLACED AT 250' (75 m) INTERVALS AND SHALL BE EVENLY SPACED BETWEEN BOTH ENDS OF THE BIDIRECTIONAL LEFT TURN LANE. USE A MINIMUM OF TWO PAIRS PER BLOCK.
- (C) THE SOLID YELLOW PAVEMENT MARKINGS [2] SHOULD GENERALLY START OR END NEAR THE RADIUS POINT OF EACH STREET RETURN EXCEPT WHERE ONE OR BOTH ENDS WOULD INCLUDE STOP BARS.
- (D) THE SKIP-DASH PAVEMENT MARKINGS [1] OR [7] SHOULD BE CENTERED BETWEEN BOTH ENDS OF EACH CITY BLOCK AND SHALL BE PLACED SO THEY LINE UP ACROSS FROM EACH OTHER.
- (E) USE LARGE ARROW SIZE FOR BOTH RURAL AND URBAN LOCATIONS. (SEE LAST PAGE OF SECTION 780X FOR SYMBOLS TABLE)



RELATIONSHIP OF STRIPES, MARKERS AND JOINTS



LEFT ARROW
REVERSE FOR RIGHT ARROW
AREA = 15.6 SQ. FT. (1.47 m²)
(WHITE)



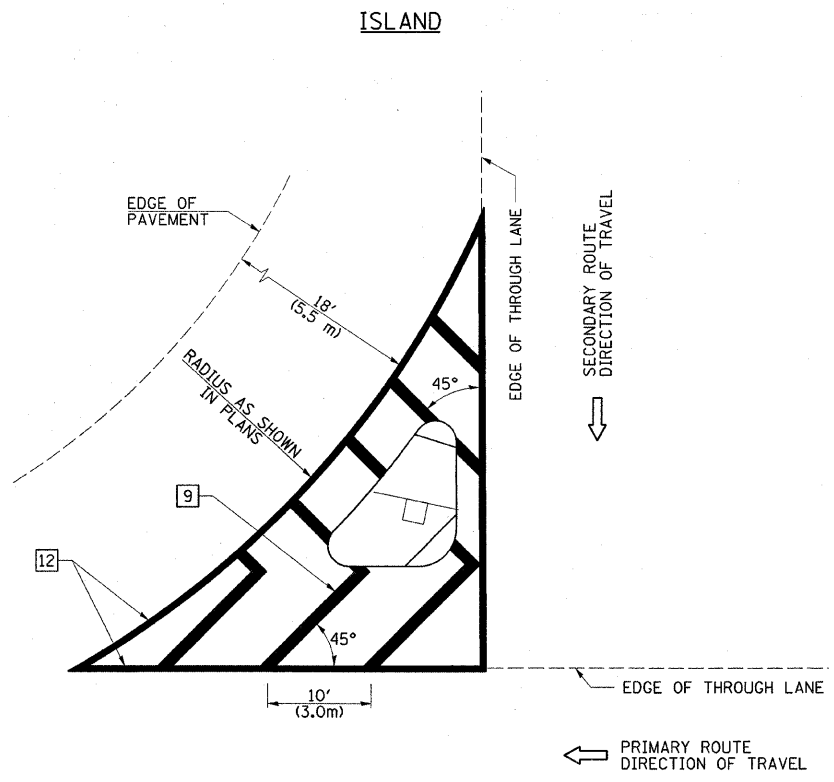
TYPICAL DOUBLE TURN ARROWS (WHITE)

NOT TO SCALE

Note: All dimensions are in INCHES (millimeters) unless otherwise shown.

FILE NAME =	USER NAME = swartzw	DESIGNED -	REVISED -	STATE OF ILLINOIS DEPARTMENT OF TRANSPORTATION	PAVEMENT MARKING AND RAISED REFLECTIVE PAVEMENT MARKERS (RURAL & URBAN APPLICATIONS)	F.A.P. RTE.	SECTION	COUNTY	TOTAL SHEETS	SHEET NO.
c:\pw_work\pwsdot\swartzw\d8241830\d77	506-shd-det01s.dgn	DRAWN -	REVISED -			95	(5,6)RS-2A	JASPER	19	17
PLOT SCALE = 50.0000 ' / IN.	CHECKED -	REVISED -	CONTRACT NO. 74506			ILLINOIS FED. AID PROJECT				
PLOT DATE = 12/10/2010	DATE -	REVISED -	SCALE: NA			SHEET NO. 2 OF 4 SHEETS	STA. TO STA.			

DISTRICT 7 DETAIL NO. 7800001



GENERAL NOTES

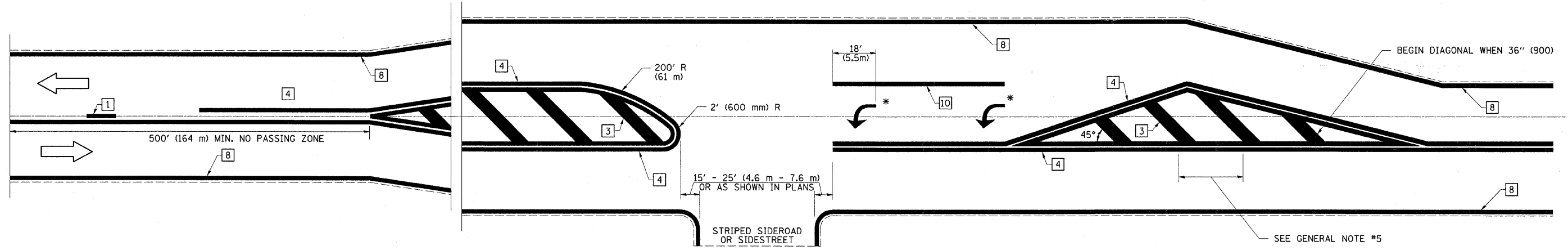
1. RAISED AND CORRUGATED MEDIANS SHALL BE OUTLINED WITH [2] IF PRESENT.
2. SOME OF THE INFORMATION INCLUDED WITH THIS DETAIL MAY NOT BE APPLICABLE TO THIS IMPROVEMENT.
3. PAVEMENT MARKINGS ARE TO BE EXTENDED THROUGH OMISSIONS WHEN APPLICABLE.
4. FINAL PAVEMENT MARKINGS SHALL BE IN PLACE PRIOR TO PLACING ANY RAISED REFLECTIVE PAVEMENT MARKERS.
5. THE FOLLOWING CRITERIA SHALL BE USED FOR SELECTING THE DIAGONAL PAVEMENT MARKING SPACING:

< 30 MPH (< 50 km/h)	15' (4.5 m)
30-45 MPH (50-75 km/h)	20' (6.0 m)
> 45 MPH (> 75 km/h)	30' (9.0 m)

PAVEMENT MARKING LEGEND

- | | |
|-------------------------------------|--|
| [1] 4" (100) SKIP-DASH (YELLOW) | |
| [2] 4" (100) SOLID (YELLOW) | |
| [3] 12" (300) DIAGONAL (YELLOW) | |
| [4] 4" (100) DOUBLE YELLOW (NARROW) | |
| [5] RESERVED | |
| [6] RESERVED | |
| [7] 6" (150) SKIP-DASH (WHITE) | |
| [8] 4" (100) SOLID (WHITE) | |
| [9] 12" (300) DIAGONAL (WHITE) | |
| [10] 6" (150) SOLID (WHITE) | |
| [11] 24" (600) STOP BAR (WHITE) | |
| [12] 8" (200) SOLID (WHITE) | |
| [13] 6" (100) LANE LINE EXTENSIONS | |
| [14] 4" (100) PARKING WHITE | |

RURAL LEFT TURN STRIPING



* PLACE AN ARROW 18' (5.5 m) BACK FROM STOP BAR. PLACE ANOTHER ARROW EVEN WITH THE BEGINNING OF THE SOLID WHITE LINE. SPACE ADDITIONAL ARROWS EVENLY UP TO 80' (24.4 m) MAXIMUM SPACING. USE MINIMUM OF 2 ARROWS.

SEE GENERAL NOTE #5

NOT TO SCALE

Note: All dimensions are in INCHES (millimeters) unless otherwise shown.

FILE NAME =	USER NAME = swartzrw
c:\pw_work\pwidot\swartzrw\d0241030\d774	506-sht-details.dgn
PLOT SCALE = 58.0000 "/>	IN.
PLOT DATE = 12/10/2010	

DESIGNED -	REVISED -
DRAWN -	REVISED -
CHECKED -	REVISED -
DATE -	REVISED -

**STATE OF ILLINOIS
DEPARTMENT OF TRANSPORTATION**

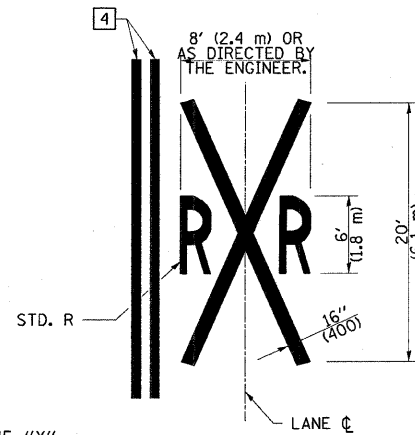
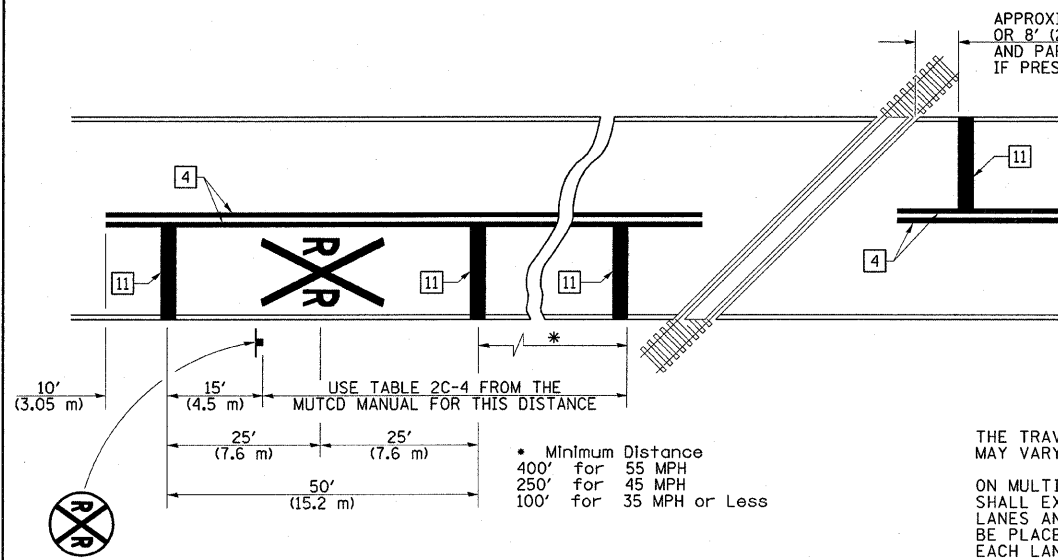
**PAVEMENT MARKING AND RAISED REFLECTIVE PAVEMENT MARKERS
(RURAL & URBAN APPLICATIONS)**

SCALE: NA SHEET NO. 3 OF 4 SHEETS STA. TO STA.

DISTRICT 7 DETAIL NO. 7800001				
F.A.P. RTE.	SECTION	COUNTY	TOTAL SHEETS	SHEET NO.
95	(5,6)RS-2A	JASPER	19	18
CONTRACT NO. 74506			ILLINOIS FED. AID PROJECT	

PAVEMENT MARKINGS AT RAILROAD-HIGHWAY GRADE CROSSING

PAVEMENT MARKING LEGEND



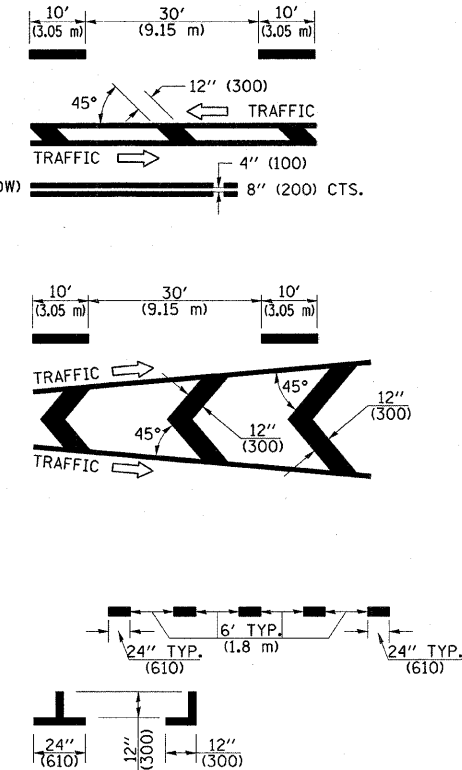
NOTES

THE TRAVERSE SPREAD OF THE "X" MAY VARY ACCORDING TO LANE WIDTH.

ON MULTI-LANE ROADS, THE STOP LINES SHALL EXTEND ACROSS ALL APPROACH LANES AND SEPARATE R X R SYMBOLS SHALL BE PLACED ADJACENT TO EACH OTHER IN EACH LANE.

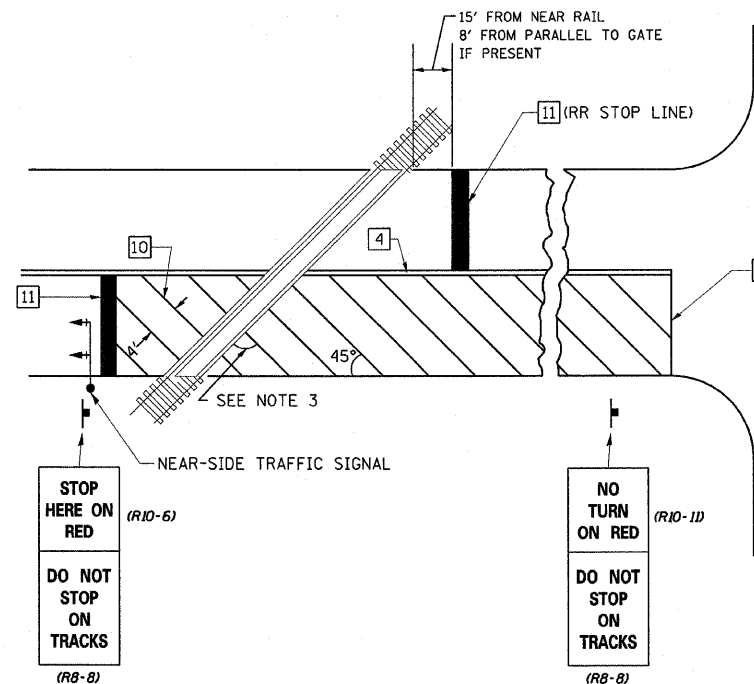
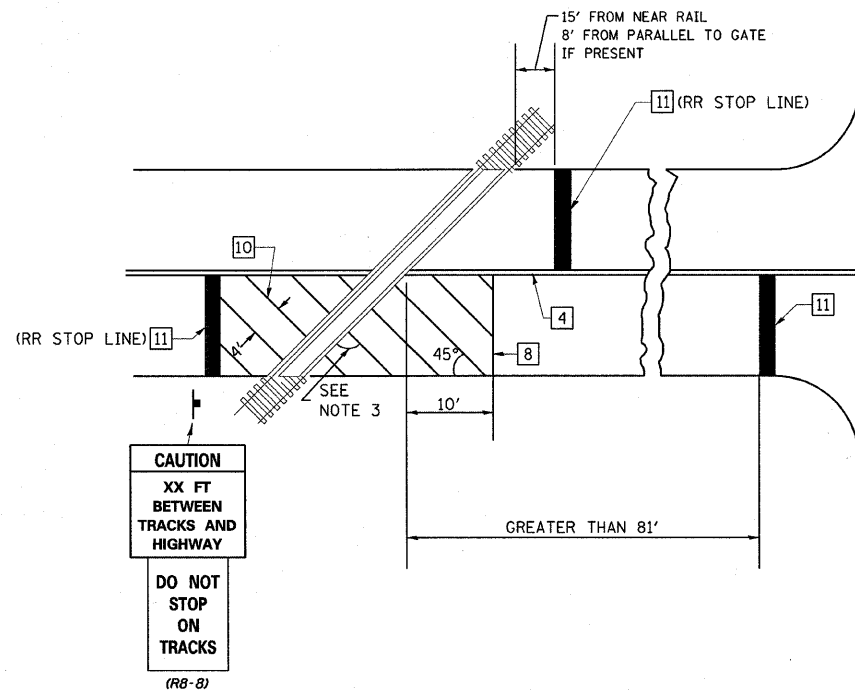
WHEN THE PAVEMENT MARKING SYMBOL IS USED, A PORTION OF THE SYMBOL SHOULD BE LOCATED DIRECTLY ADJACENT TO THE ADVANCE WARNING SIGN (W10-1) AS PLACED BY TABLE II-1, CONDITION B OF THE MUTCD.

- 1 4" (100) SKIP-DASH (YELLOW)
- 2 4" (100) SOLID (YELLOW)
- 3 12" (300) DIAGONAL (YELLOW)
- 4 4" (100) DOUBLE YELLOW (NARROW)
- 5 RESERVED
- 6 RESERVED
- 7 6" (150) SKIP-DASH (WHITE)
- 8 4" (100) SOLID (WHITE)
- 9 12" (300) DIAGONAL (WHITE)
- 10 6" (150) SOLID (WHITE)
- 11 24" (600) STOP BAR (WHITE)
- 12 8" (200) SOLID (WHITE)
- 13 6" (100) LANE LINE EXTENSIONS
- 14 4" (100) PARKING WHITE



RAILROAD CROSSING WITH INTERCONNECT ONLY

RAILROAD CROSSING WITH INTERCONNECT AND PRE-SIGNALS



GENERAL NOTES

1. SUPPLEMENTAL PAVEMENT MARKINGS TO BE INSTALLED ONLY ON APPROACHES TO INTERSECTIONS CONTROLLED BY TRAFFIC SIGNALS WHICH ARE INTERCONNECTED WITH THE RAILROAD WARNING SIGNALS.
2. EXTEND PAVEMENT MARKINGS TO THE INTERSECTION ONLY WHERE NEAR-SIDE TRAFFIC SIGNALS ARE USED.
3. WHERE THE ANGLE BETWEEN THE DIAGONAL PAVEMENT MARKINGS AND THE TRACK WOULD BE LESS THAN 20°, THE PAVEMENT MARKINGS SHOULD BE PLACED IN THE OPPOSITE DIRECTION FROM THAT SHOWN.

SUPPLEMENTAL PAVEMENT MARKING TREATMENT FOR RAILROAD-HIGHWAY GRADE CROSSING

NOT TO SCALE

Note: All dimensions are in INCHES (millimeters) unless otherwise shown.

FILE NAME =	USER NAME = swartzw	DESIGNED -	REVISED -
c:\p\work\p\dot\swartzw\d0241030\d77	506-sht-details.dgn	DRAWN -	REVISED -
	PLOT SCALE = 50.0000' / IN.	CHECKED -	REVISED -
	PLOT DATE = 12/10/2010	DATE -	REVISED -

STATE OF ILLINOIS
DEPARTMENT OF TRANSPORTATION

PAVEMENT MARKING AND RAISED REFLECTIVE PAVEMENT MARKERS
(RURAL & URBAN APPLICATIONS)

DISTRICT 7 DETAIL NO. 78000001				
F.A.P. RTE.	SECTION	COUNTY	TOTAL SHEETS	SHEET NO.
95	(5,6)RS-2A	JASPER	19	19
CONTRACT NO. 74506			ILLINOIS FED. AID PROJECT	

SCALE: NA SHEET NO. 4 OF 4 SHEETS STA. TO STA.