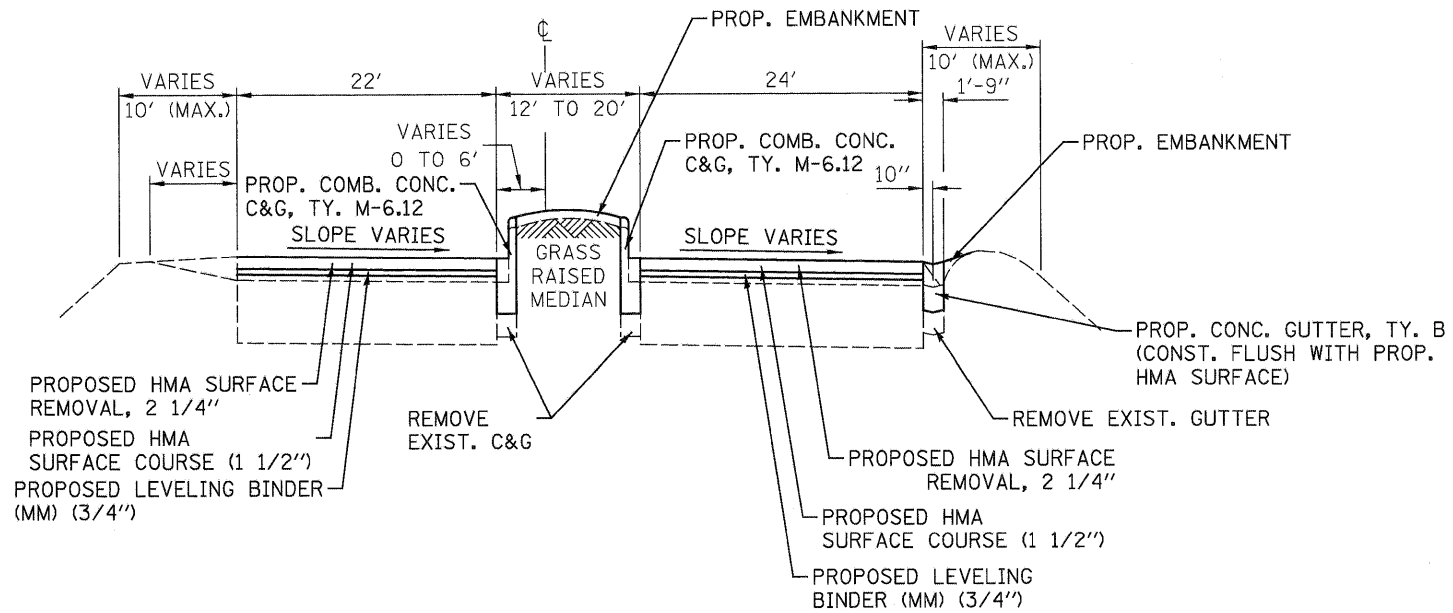
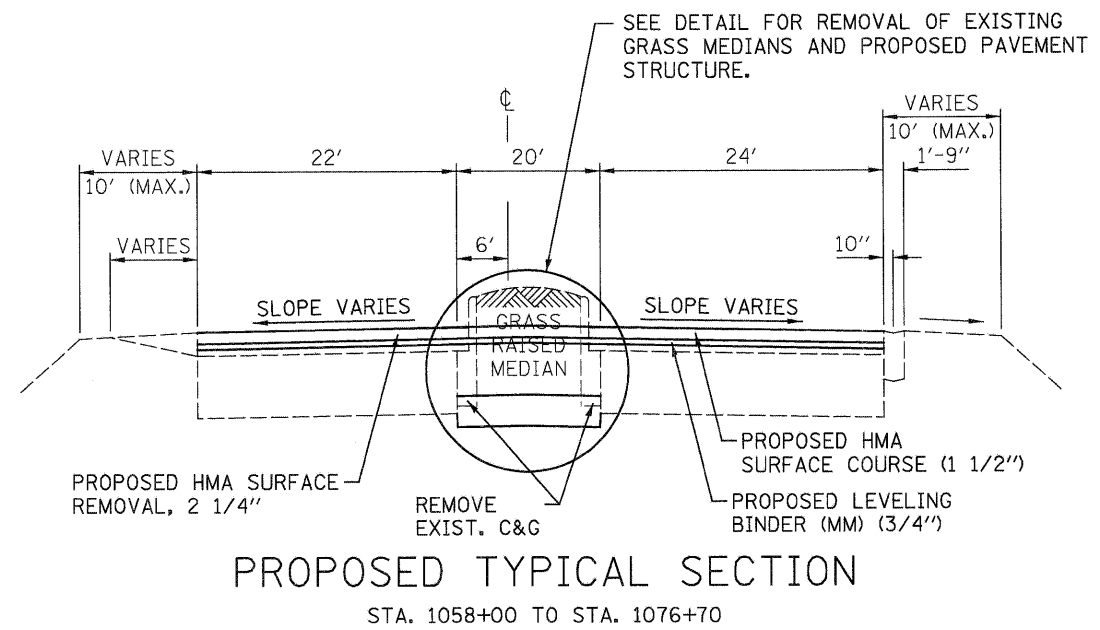


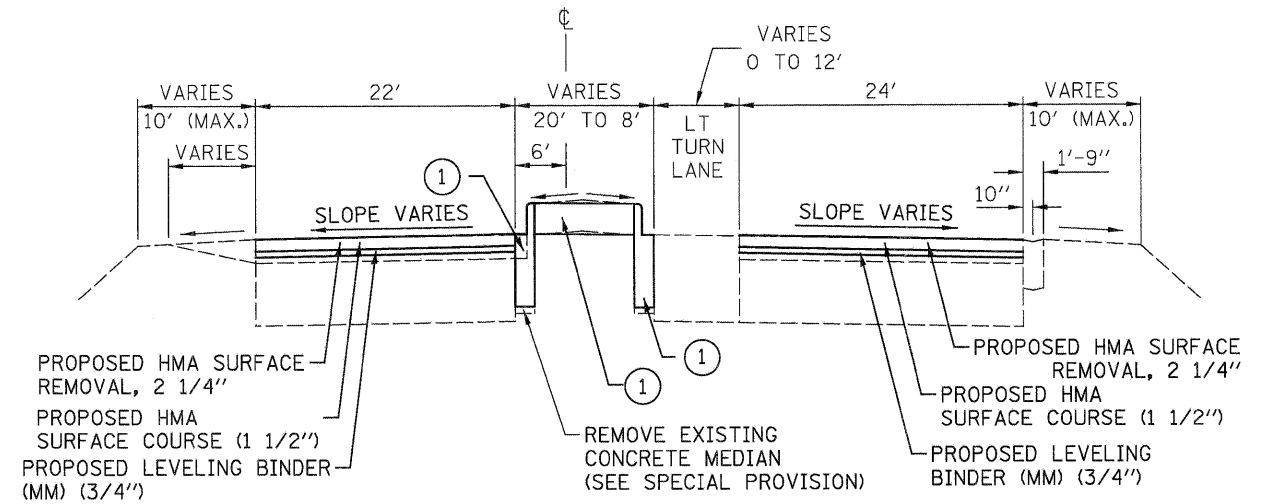
PROPOSED TYPICAL SECTION
STA. 1050+39 TO STA. 1058+00



PROPOSED TYPICAL SECTION
STA. 1058+00 TO STA. 1068+00



PROPOSED TYPICAL SECTION
STA. 1058+00 TO STA. 1076+70



PROPOSED TYPICAL SECTION
STA. 1076+70 TO STA. 1081+00

① STA. 1076+70 TO STA. 1078+95
CONST. COMB. CONCRETE C&G,
TY. M-6.12 AND CONC. MED. SURF., 4 INCH
STA. 1078+95 TO STA. 1080+90
CONST. CONCRETE MEDIAN, TY. SM-6.12

FILE NAME = ...oaddd\0876D96-sh-t-typ10a1.dgn	USER NAME = SJS	DESIGNED -	REVISED -	STATE OF ILLINOIS DEPARTMENT OF TRANSPORTATION	PROPOSED TYPICAL SECTIONS			F.A.U. RTE. 9166	SECTION 34-IRS-3	COUNTY ST. CLAIR	TOTAL SHEETS 87	SHEET NO. 13
Johnson, Depp & Oulsenberry CONSULTING ENGINEERS Springfield, Illinois	PLOT SCALE = 8.0000' / IN.	DRAWN -	REVISED -		SCALE:	SHEET NO.	OF	SHEETS	STA. 975+45.58 TO STA. 990+00.00	ILLINOIS FED. AID PROJECT		
	PLOT DATE = 12/15/2010 09:35:14	CHECKED -	REVISED -							CONTRACT NO. 76D96		
		DATE -	REVISED -							CONTRACT NO. 76D96		
										CONTRACT NO. 76D96		