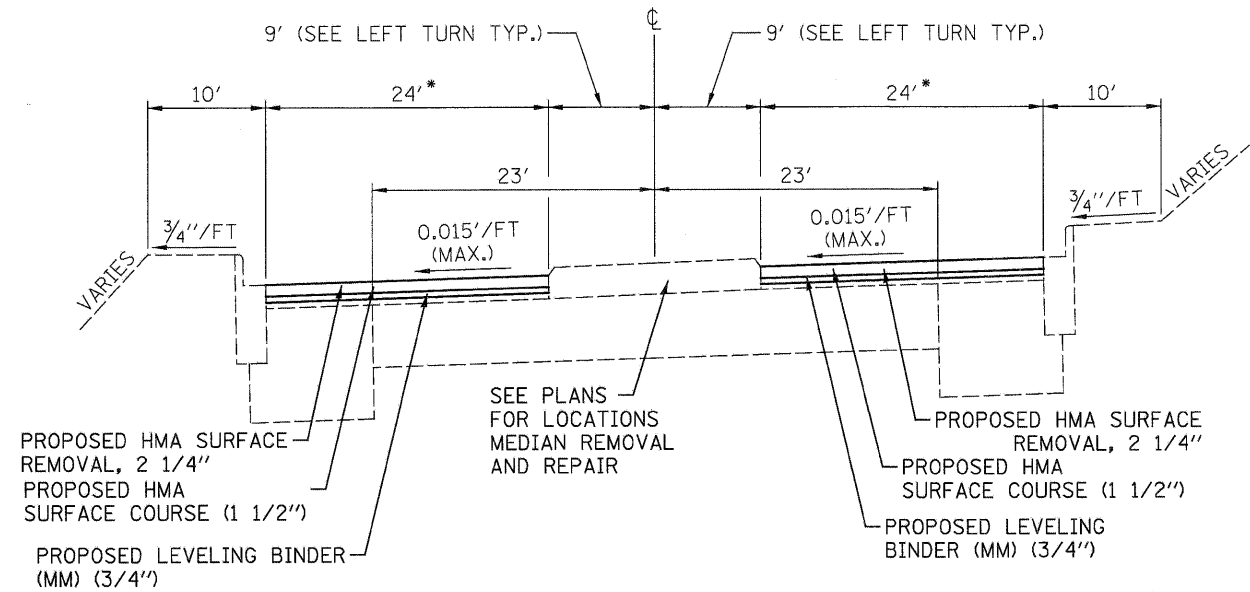


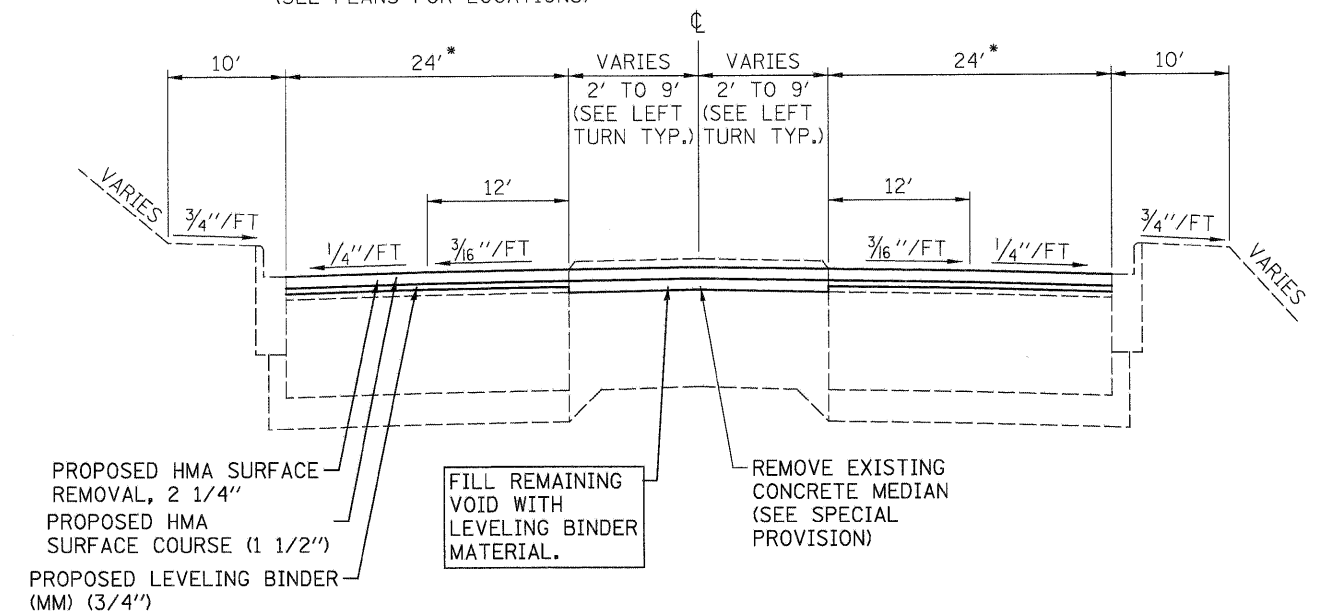
\* ADDITIONAL 12' WHERE THERE ARE RT.-TURN/BUS STOP LANES.  
(SEE PLANS FOR LOCATIONS)



**PROPOSED TYPICAL SUPERELEVATED SECTION**

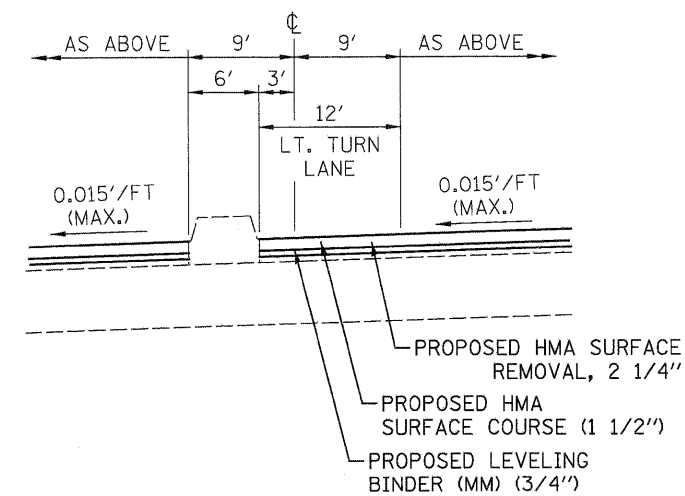
STA. 1295+50 TO STA. 1321+00  
(STA. 1295+50 TO STA. 1306+00 (FULL SUPER, LT. EDGE HIGH)  
(STA. 1309+00 TO STA. 1321+00 (FULL SUPER, RT. EDGE HIGH)

\* ADDITIONAL 12' WHERE THERE ARE RT.-TURN/BUS STOP LANES.  
(SEE PLANS FOR LOCATIONS)



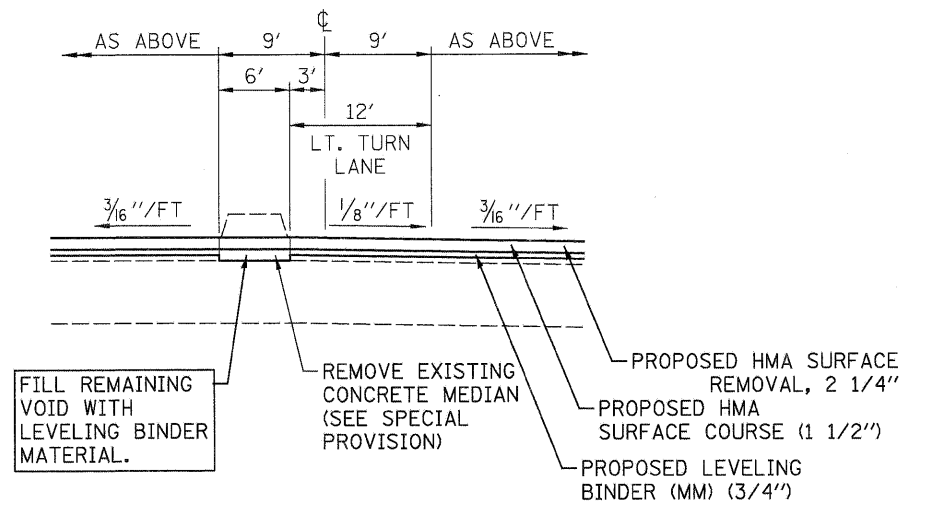
**PROPOSED TYPICAL SECTION**

STA. 1321+00 TO STA. 1374+00



**PROPOSED TYPICAL SUPERELEVATED SECTION**

WITH LEFT TURN  
(SEE PLANS FOR LOCATIONS)



**PROPOSED TYPICAL SECTION WITH LEFT LANE**

(SEE PLANS FOR LOCATIONS)

FILE NAME = ...oaddd\0878096-ahb-typicoe1.dgn Johnson, Depp & Quisenberry CONSULTING ENGINEERS Springfield, Illinois	USER NAME = SJS	DESIGNED -	REVISED -	<b>STATE OF ILLINOIS</b> <b>DEPARTMENT OF TRANSPORTATION</b>	<b>PROPOSED TYPICAL SECTIONS</b> SCALE: SHEET NO. OF SHEETS STA. 975+45.58 TO STA. 990+00.00			F.A.U. RTE. 9166	SECTION 34-IRS-3	COUNTY ST. CLAIR	TOTAL SHEETS 87	SHEET NO. 17
	PLOT SCALE = 8.0000' / IN.	DRAWN -	REVISED -					CONTRACT NO. 76D96				
	PLOT DATE = 12/15/2010 @ 9:35:18	CHECKED -	REVISED -					ILLINOIS FED. AID PROJECT				
	DATE -	REVISED -										