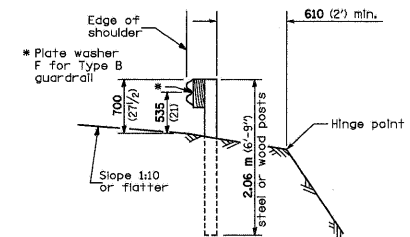
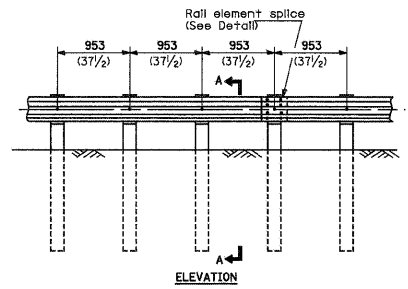


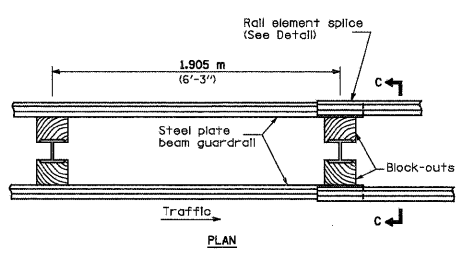
TYPE A
1.905 m (6'-3") Typical post spacing



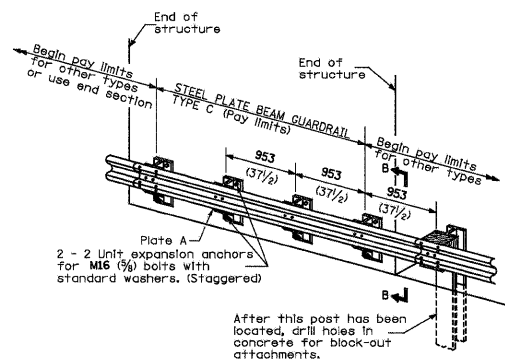
SECTION A-A



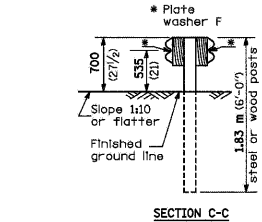
TYPE B
953 (31 1/2) Closed post spacing



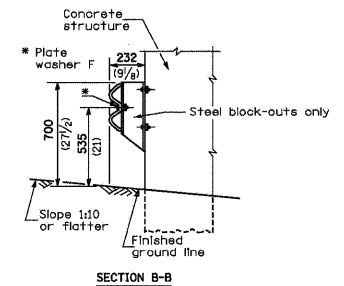
TYPE D
Double steel plate beam guardrail
1.905 m (6'-3") typical post spacing



TYPE C
953 (31 1/2) Block-out spacing



SECTION C-C

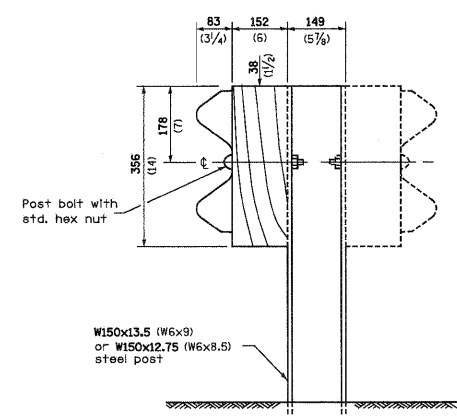


SECTION B-B

GENERAL NOTES
All slope ratios are expressed as units of vertical displacement to units of horizontal displacement (V:H).
All dimensions are in millimeters (inches) unless otherwise shown.

DATE	REVISIONS

STEEL PLATE BEAM GUARDRAIL
(Sheet 1 of 4)
STANDARD 630001-04



STEEL POST CONSTRUCTION

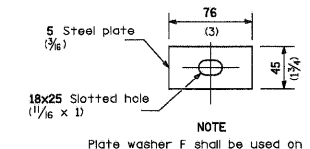
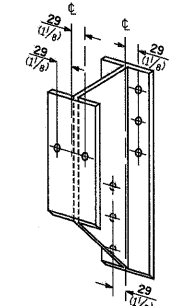


PLATE WASHER F



STEEL BLOCK-OUT DETAIL

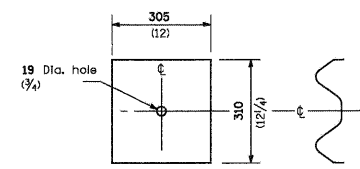
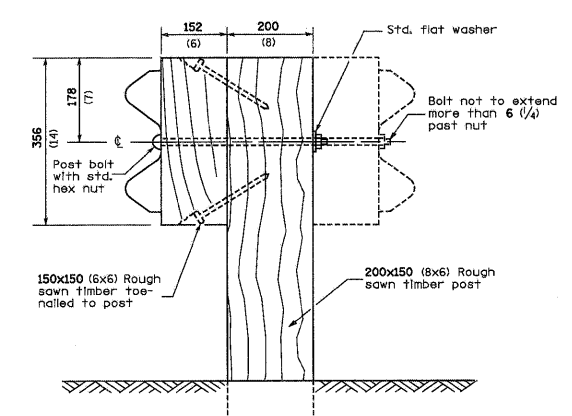
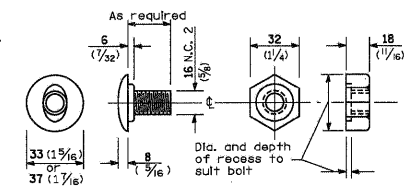


PLATE A

NOTE: Plate A shall be placed between rail element and block-out at non-splice mounting points only when steel block-outs are used.

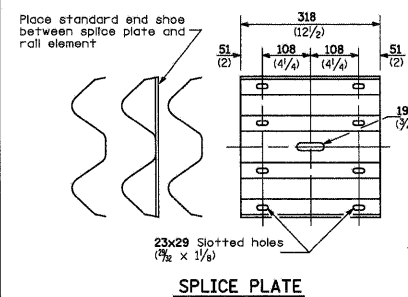


WOOD POST CONSTRUCTION

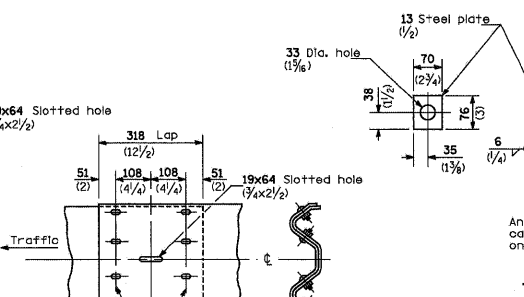


POST OR SPLICE BOLT & NUT

STEEL PLATE BEAM GUARDRAIL
(Sheet 2 of 4)
STANDARD 630001-04

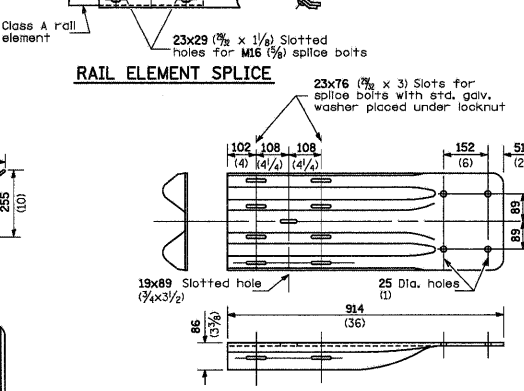


SPLICE PLATE

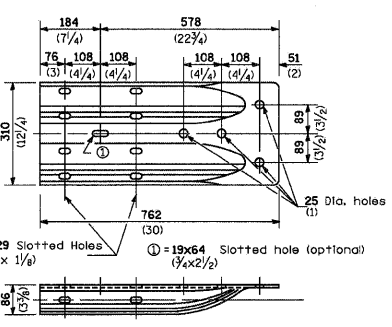


ANCHOR PLATE T DETAILS

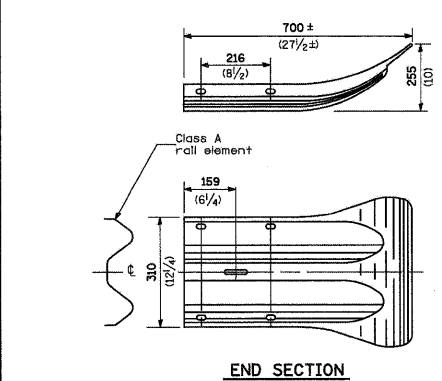
NOTE: Anchor plate T shall be used to attach cable assembly to guardrail when required on traffic barrier terminals.



RAIL ELEMENT SPLICE



ALTERNATE END SHOE

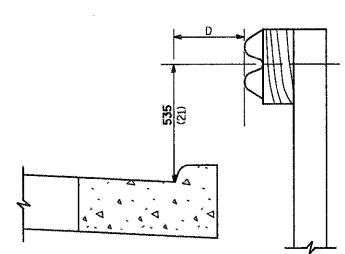


END SECTION

NOTE: When end shoe is attached to a bridge parapet which has an expansion joint, the bolts shall be provided with a locknut or double nut and shall be tightened only to a point that will allow guardrail movement.
The standard end shoe shall be attached to the concrete with pre-drilled or self-drilling anchor bolts. The anchor cone shall be set flush with the surface of the concrete.
Externally threaded studs protruding from the surface of the concrete will not be permitted.

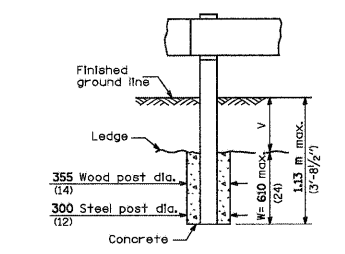
END SHOE

STEEL PLATE BEAM GUARDRAIL
(Sheet 3 of 4)
STANDARD 630001-04

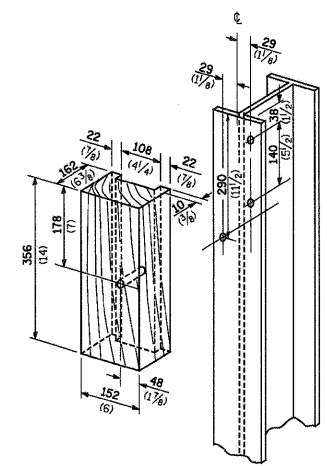


GUARDRAIL PLACED BEHIND CURB
(D = 0 desirable to 300 (12) maximum)

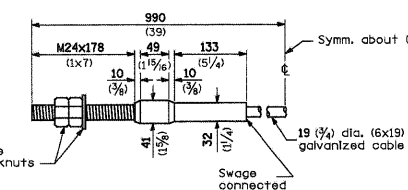
NOTE: If it is necessary for D to be more than 300 (12) and less than 3.0 m (10'-0") type M-5 (M-2) curb and gutter (Std. 60600) shall be used in front of and in advance of the guardrail.



FOOTING FOR POST WHEN IMPERVIOUS MATERIAL IS ENCOUNTERED



WOOD BLOCK-OUT AND STEEL POST DETAILS



CABLE ASSEMBLY
(18,100 kg (40,000 lbs.) min. breaking strength)
Tighten to full tension.

STEEL PLATE BEAM GUARDRAIL
(Sheet 4 of 4)
STANDARD 630001-04

FILE NAME = ...\\cadd\0876096-shr-details.dgn	USER NAME = JTH	DESIGNED -	REVISED -
J.D. Johnson, Depp & Olsenberry CONSULTING ENGINEERS Springfield, Illinois	PLOT SCALE = 50.0000 "/ IN.	DRAWN -	REVISED -
	PLOT DATE = 01/13/2011 13:18:20	CHECKED -	REVISED -
		DATE -	REVISED -

STATE OF ILLINOIS DEPARTMENT OF TRANSPORTATION

EXISTING GUARDRAIL DETAILS			
SCALE:	SHEET NO.	OF SHEETS	STA. TO STA.

F.A.U. RTE. 9166	SECTION 34-1RS-3	COUNTY ST. CLAIR	TOTAL SHEETS 87	SHEET NO. 87A
CONTRACT NO. 76D96				ILLINOIS FED. AID PROJECT