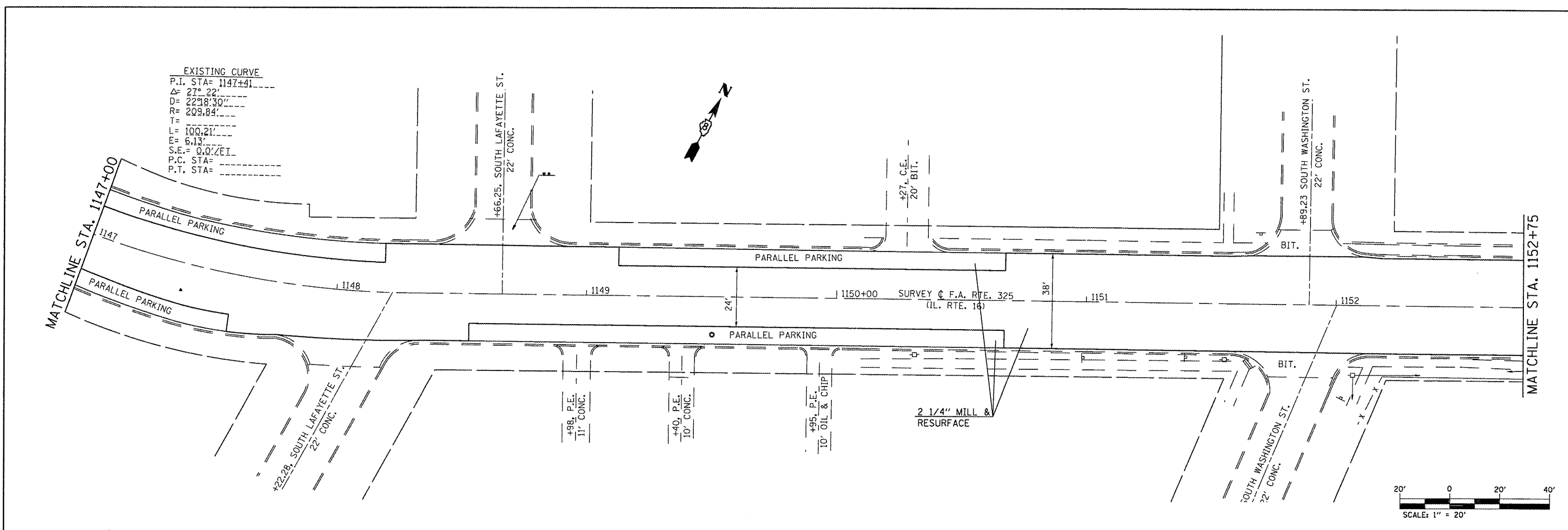
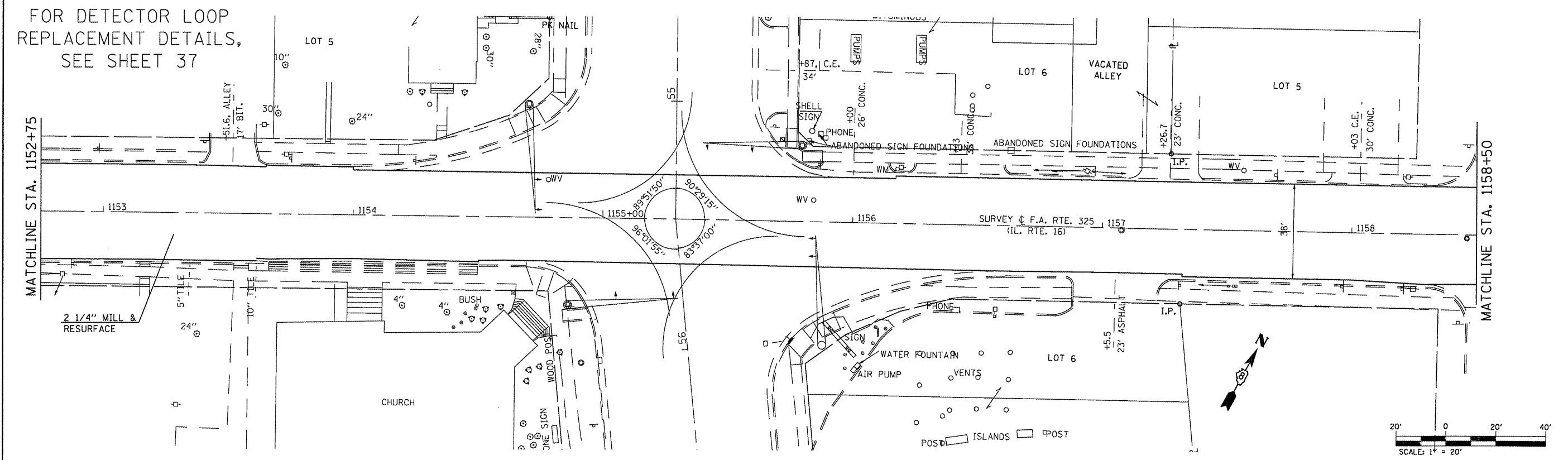


EXISTING CURVE
 P.I. STA= 1147+41
 Δ= 27° 22'
 D= 2238' 30"
 R= 209.84'
 T= 100.21'
 E= 6.13'
 S.E. = 0.07 E.T.
 P.C. STA= 1147+00
 P.T. STA= 1147+82



FOR DETECTOR LOOP REPLACEMENT DETAILS, SEE SHEET 37



FILE NAME =	USER NAME = #USER#	DESIGNED -	REVISED -
#FILE#		DRAWN -	REVISED -
	PLOT SCALE = #SCALE#	CHECKED -	REVISED -
	PLOT DATE = #DATE#	DATE -	REVISED -

**STATE OF ILLINOIS
 DEPARTMENT OF TRANSPORTATION**

PLAN SHEETS
 SCALE: 1" = 20'
 SHEET NO. 4 OF 9 SHEETS
 STA. 1147+00 TO STA. 1159+00

F.A.P. RTE.	SECTION	COUNTY	TOTAL SHEETS	SHEET NO.
325	57R5-2	JERSEY	37	20
FED. ROAD DIST. NO. ILLINOIS FED. AID PROJECT				CONTRACT NO. 76E12