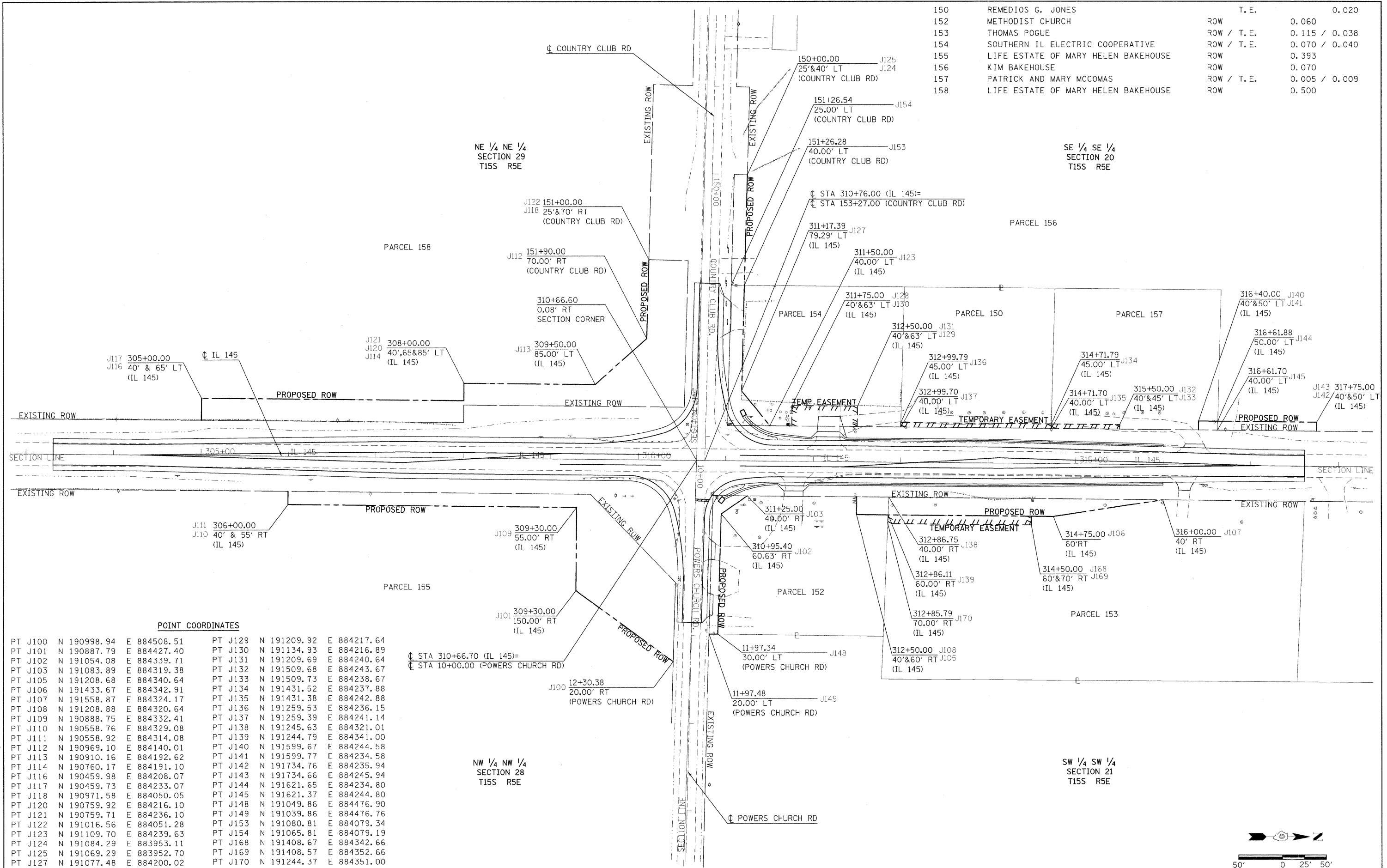


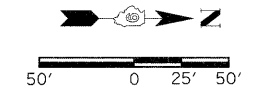
PARCEL NO.	PROPERTY OWNER	PURPOSE	ACREAGE
150	REMEDIOS G. JONES	T. E.	0.020
152	METHODIST CHURCH	ROW	0.060
153	THOMAS POGUE	ROW / T. E.	0.115 / 0.038
154	SOUTHERN IL ELECTRIC COOPERATIVE	ROW / T. E.	0.070 / 0.040
155	LIFE ESTATE OF MARY HELEN BAKEHOUSE	ROW	0.393
156	KIM BAKEHOUSE	ROW	0.070
157	PATRICK AND MARY MCCOMAS	ROW / T. E.	0.005 / 0.009
158	LIFE ESTATE OF MARY HELEN BAKEHOUSE	ROW	0.500



**POINT COORDINATES**

PT J100	N	190998.94	E	884508.51	PT J129	N	191209.92	E	884217.64
PT J101	N	190887.79	E	884427.40	PT J130	N	191134.93	E	884216.89
PT J102	N	191054.08	E	884339.71	PT J131	N	191209.69	E	884240.64
PT J103	N	191083.89	E	884319.38	PT J132	N	191509.68	E	884243.67
PT J105	N	191208.68	E	884340.64	PT J133	N	191509.73	E	884238.67
PT J106	N	191433.67	E	884342.91	PT J134	N	191431.52	E	884237.88
PT J107	N	191558.87	E	884324.17	PT J135	N	191431.38	E	884242.88
PT J108	N	191208.88	E	884320.64	PT J136	N	191259.53	E	884236.15
PT J109	N	190888.75	E	884332.41	PT J137	N	191259.39	E	884241.14
PT J110	N	190558.76	E	884329.08	PT J138	N	191245.63	E	884321.01
PT J111	N	190558.92	E	884314.08	PT J139	N	191244.79	E	884341.00
PT J112	N	190969.10	E	884140.01	PT J140	N	191599.67	E	884244.58
PT J113	N	190910.16	E	884192.62	PT J141	N	191599.77	E	884234.58
PT J114	N	190760.17	E	884191.10	PT J142	N	191734.76	E	884235.94
PT J116	N	190459.98	E	884208.07	PT J143	N	191734.66	E	884245.94
PT J117	N	190459.73	E	884233.07	PT J144	N	191621.65	E	884234.80
PT J118	N	190971.58	E	884050.05	PT J145	N	191621.37	E	884244.80
PT J120	N	190759.92	E	884216.10	PT J148	N	191049.86	E	884476.90
PT J121	N	190759.71	E	884236.10	PT J149	N	191039.86	E	884476.76
PT J122	N	191016.56	E	884051.28	PT J153	N	191080.81	E	884079.34
PT J123	N	191109.70	E	884239.63	PT J154	N	191065.81	E	884079.19
PT J124	N	191084.29	E	883953.11	PT J168	N	191408.67	E	884342.66
PT J125	N	191069.29	E	883952.70	PT J169	N	191408.57	E	884352.66
PT J127	N	191077.48	E	884200.02	PT J170	N	191244.37	E	884351.00
PT J128	N	191134.69	E	884239.89					

STA 310+66.70 (IL 145)=  
 STA 10+00.00 (POWERS CHURCH RD)



FILE NAME = c:\p\work\1045\dickerson\m\0123145\9776116.eht...row.dgn

USER NAME = dickersonlm	DESIGNED -	REVISED -
PLOT SCALE = 50.0000' / IN.	DRAWN -	REVISED -
PLOT DATE = 12/21/2010	CHECKED -	REVISED -
	DATE -	REVISED -

**STATE OF ILLINOIS**  
**DEPARTMENT OF TRANSPORTATION**

IL 145 AND COUNTRY CLUB RD / POWERS CHURCH RD INTERSECTION RIGHT OF WAY		
PROJECT	SHEET NO.	OF SHEETS
JOB NO. R-99-020-09		
STA. 303+00.00 TO STA. 318+00.00		

F.A.P. RTE.	SECTION	COUNTY	TOTAL SHEETS	SHEET NO.
132	102(INL)	MASSAC	79	20
CONTRACT NO. 78116				
FED. ROAD DIST. NO. [ILLINOIS] FED. AID PROJECT				