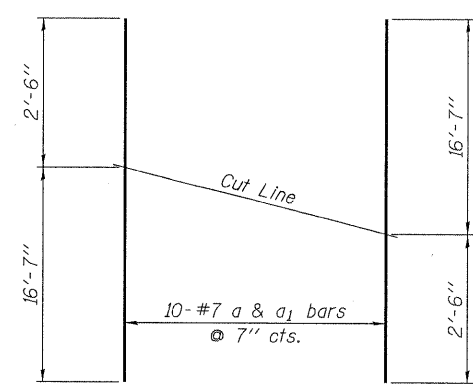
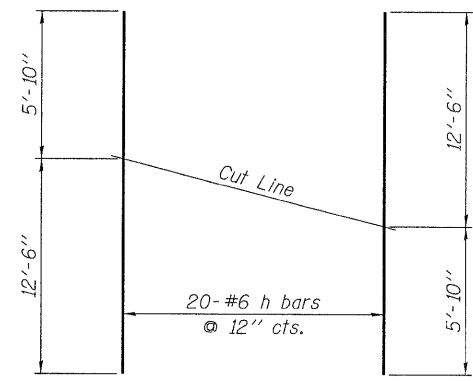


**PLAN**  
Showing reinforcement  
(West End)



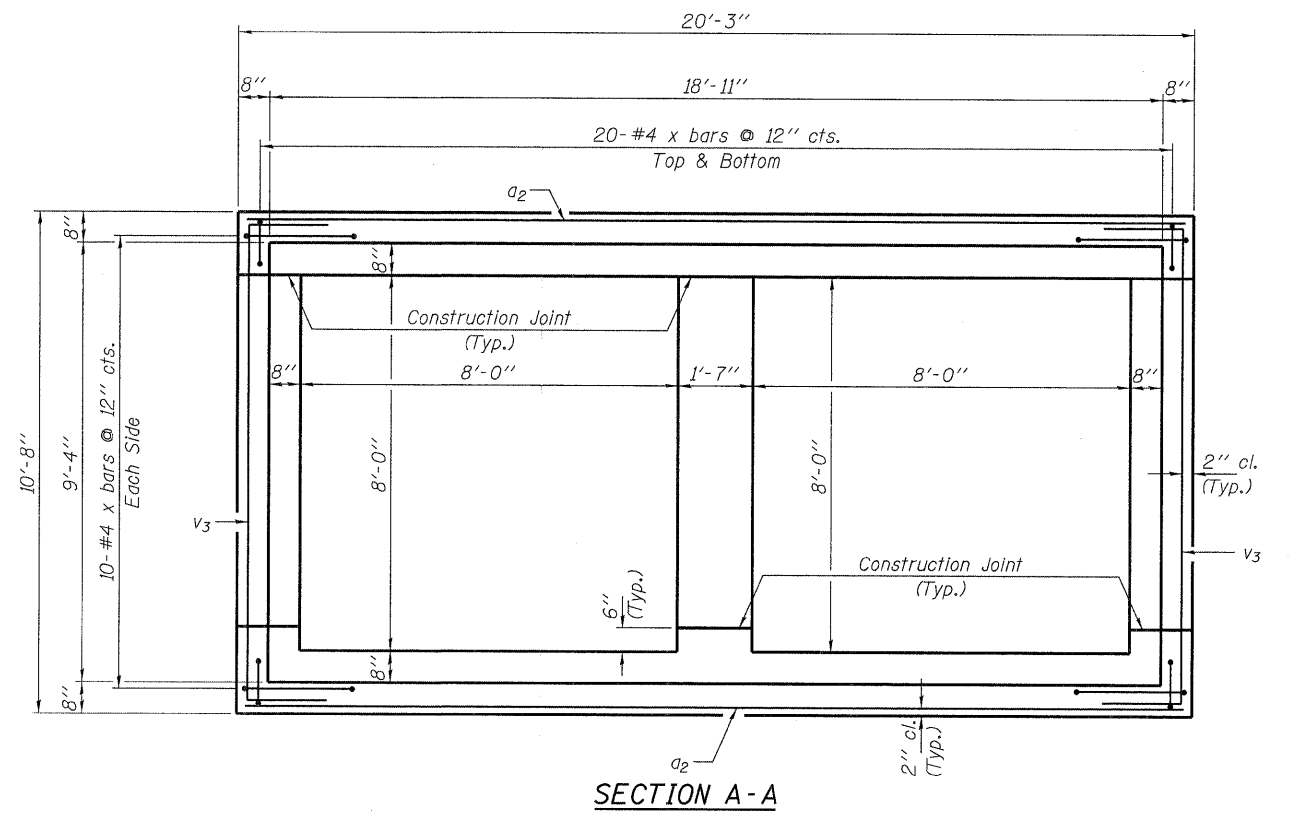
**CUTTING DIAGRAM**

Order a & a<sub>1</sub> bars full length. Cut as shown and use the remainder in opposite face of slab.

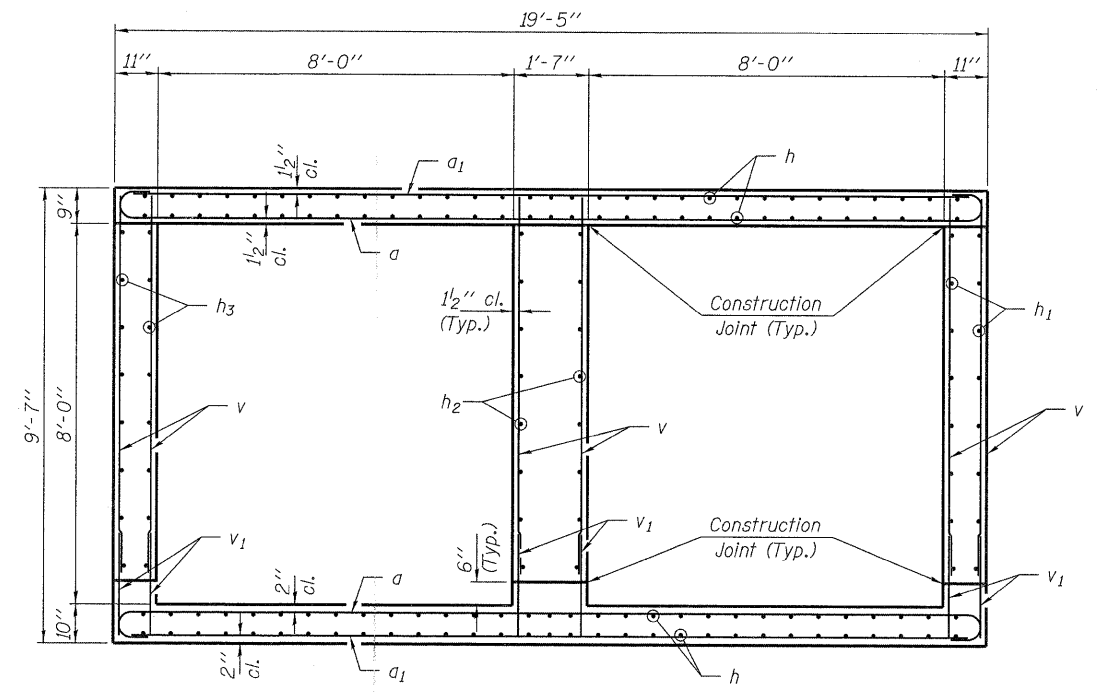


**CUTTING DIAGRAM**

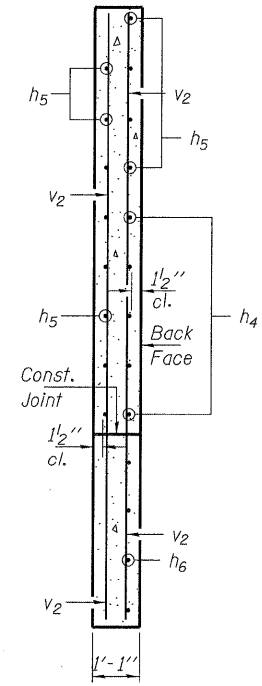
Order h bars full length. Cut as shown and use the remainder in opposite face of slab.



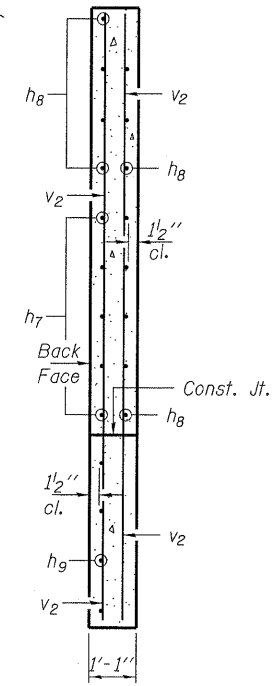
**SECTION A-A**



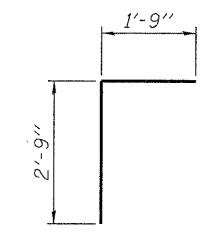
**SECTION B-B**



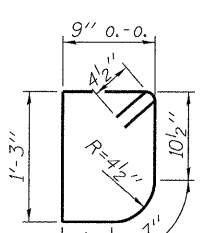
**SECTION C-C**



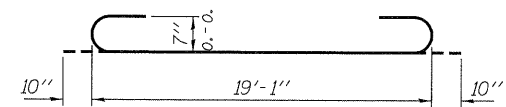
**SECTION D-D**



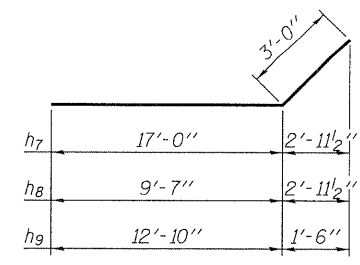
**BAR d**



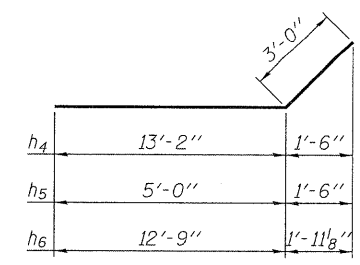
**BAR s**



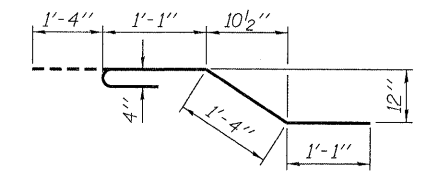
**BARS a**



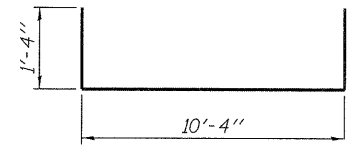
**BARS h<sub>7</sub>, h<sub>8</sub> & h<sub>9</sub>**



**BARS h<sub>4</sub>, h<sub>5</sub> & h<sub>6</sub>**



**BAR x**



**BAR v<sub>3</sub>**

FILE NAME = 180260-sh-t-culvert.dgn	USER NAME =	DESIGNED - A.S.L.	REVISED -	<b>STATE OF ILLINOIS DEPARTMENT OF TRANSPORTATION</b>	<b>CULVERT DETAILS - WEST END STRUCTURE NO. 064-7043</b>	IL	SECTION	COUNTY	TOTAL SHEETS	SHEET NO.	
HAMPTON, LENZINI AND RENWICK, INC. 3835 STEVENSON DRIVE, SUITE 201 SPRINGFIELD, ILLINOIS 62703	PLOT SCALE =	CHECKED - D.W.T.	REVISED -			145	102 (N.L.)	MASSAC	79	27	
ILLINOIS PROFESSIONAL DESIGN FIRM L3 / PE / SE CORP. 184.000959	PLOT DATE = 11/18/2010	DRAWN - D.A.B.	REVISED -			CONTRACT NO. 78116					
		CHECKED - M.D.C.	REVISED -			SHEET NO. 3 OF 8 SHEETS					